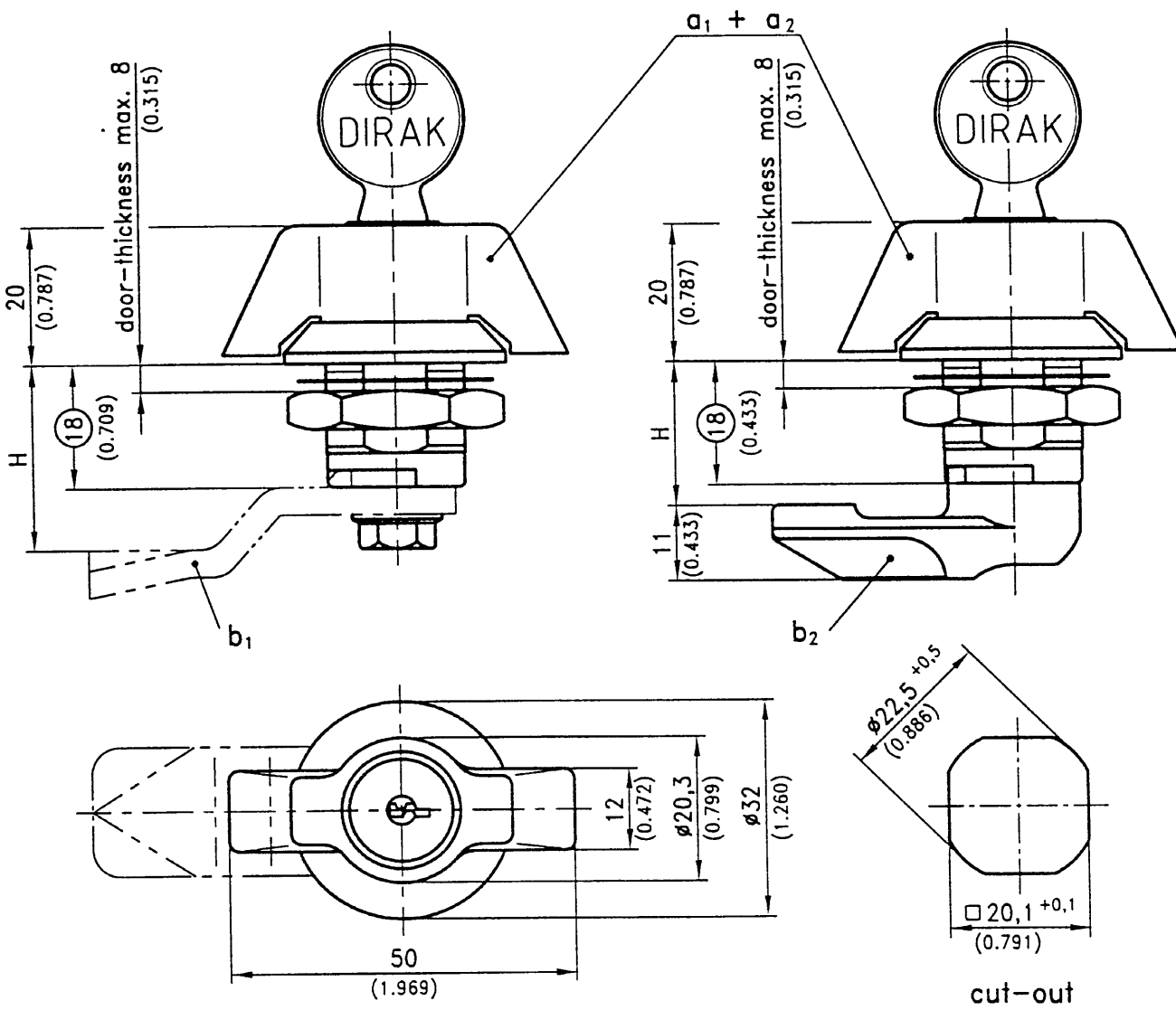




Winghandle ZINC DIE and POLYAMIDE
Screw-in Type



Winghandle with 90° turn, for RH and LH application. Consists of 2 parts.

On request the cam can be pre-assembled, refer to c). A completely assembled winghandle can be fitted through cut-out.

Order separately:	* Water- and dusttight to IP65	non-lockable with plug	keyed alike DIRAK 1333	keyed random or mixed
a1) Winghandle Handle-part: zinc die/PA combination Cylinder barrel: zinc die, chrome or Plug: polyamide black Housing: zinc die, black Nut: zinc die, earthing teeth on one side		200-9301*	200-9302	200-9303
a2) Winghandle Handle, housing, barrel or plug: polyamide, black - Nut: steel, galv. - Nut: polyamide, black		200-9368* 200-9371*	200-9369* 200-9372*	200-9370* 200-9373*
b) Cam steel, galv. refer to Page 1-100 b1) Cam polyamide, black refer to Page 1-095				
c) Assembling		200-0001		

D 04.96