

This Drawing is the property of J.S.T.(U.K.) Ltd.  
It must not be copied or used for manufacturing  
without written permission from J.S.T.(U.K.) Ltd.

**UNCONTROLLED  
CUSTOMER ISSUE**

Page 1 / 2

CS-63N004V0750NF	63N004V0750NF	PA66V0750NF	UL94V-0	Natural	65	E172855	--
CS-63N304V0750NF	63N304V0750NF	PA66V0750NF	UL94V-0	Red	65	E172855	--
CS-63N004V0	63N004V0	PA68	UL94V-0	Natural	140	E172855	--
CS-63N504STY	63N504STY	PA46	UL94V-2	Black	150	E172855	--
CS-63N004STY	63N004STY	PA46	UL94V-2	Natural	150	E172855	--
CS-63N304V0	63N304V0	PA68	UL94V-2	Red	140	E172855	--
01022-250 Red	63N304	PA66	UL94V-2	Red	130	E172855	--
01022-250 Green	63N404	PA66	UL94V-2	Green	130	E172855	--
01022-250 Brown	63NMA04	PA66	UL94V-2	Brown	130	E172855	--
01022-250 Blue	63N604	PA66	UL94V-2	Blue	130	E172855	--
01022-250 Black	63N504	PA66	UL94V-2	Black	130	E172855	--
01022-250	63N004	PA66	UL94V-2	Natural	130	E172855	--
<b>JST Part Number</b>	<b>Mfg Number</b>	<b>Material</b>	<b>Flame Class</b>	<b>Colour</b>	<b>Max Operating Temp (°C)</b>	<b>UL Card No.</b>	<b>//</b>

<b>Revision Record</b>	Amend material for p/n's: (*)04V0750NF	16.02.07
	Add suffix; 004V0750NF	27.01.06
	Add suffix; 504STY	21.12.05
	Add suffixes; 304V0750NF	14.06.05
	Amend temp rating for all materials	01.12.04
	<b>Modification Detail</b>	<b>Date</b>

**JST**

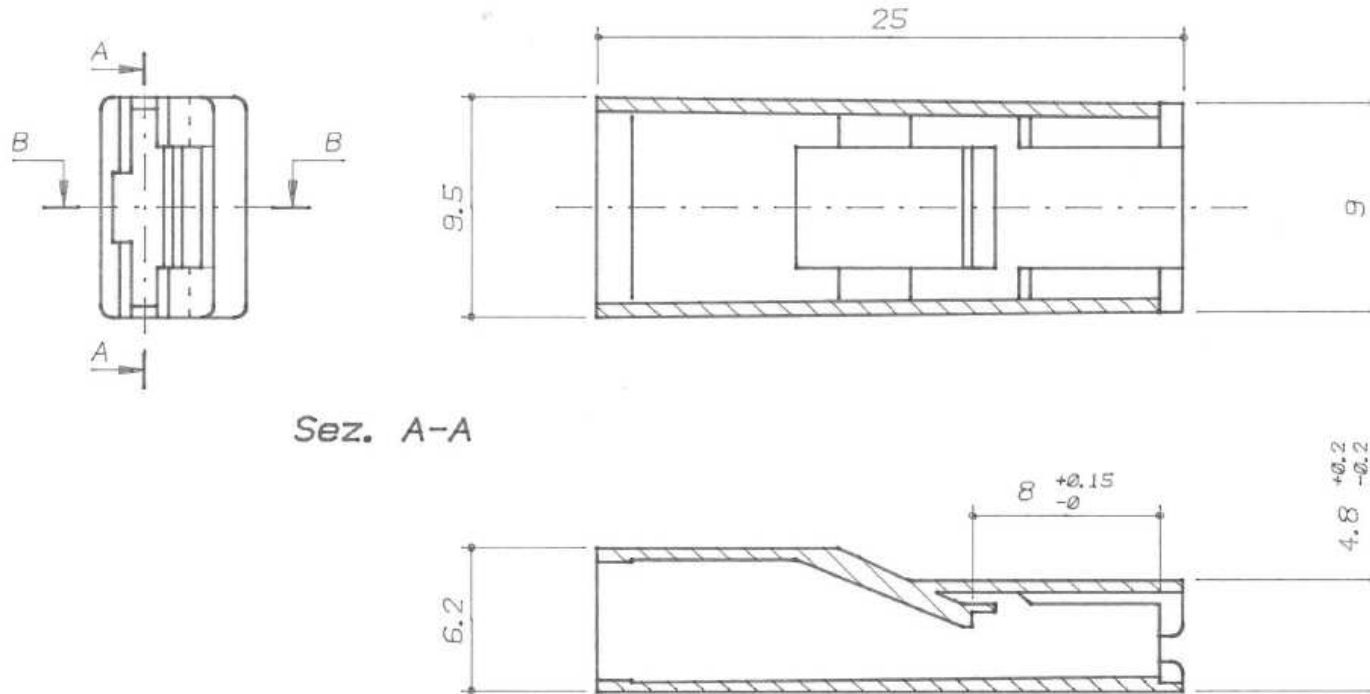
**Part Description & General Details:**

Housing for 6.3 (.250) receptacle.  
Applicable JST terminal; STO-\*\*(\*)-250\*(-\*)

<b>Series:</b>	63 Series	
<b>Drawing Ref:</b>	CS63N004-241194	
<b>Issued by:</b>	ZG	31.10.02
<b>Approved by:</b>	AR	31.10.02

This Drawing is the property of J.S.T.(U.K.) Ltd.  
It must not be copied or used for manufacturing  
without written permission from J.S.T.(U.K.) Ltd.

**UNCONTROLLED  
CUSTOMER ISSUE**



Sez. A-A

<b>Revision Record</b>	Amend material for p/n's: (*)04V0750NF	16.02.07
	Add suffix; 004V0750NF	27.01.06
	Add suffix; 504STY	21.12.05
	Add suffixes; 304V0750NF	14.06.05
	Amend temp rating for all materials	01.12.04
	<b>Modification Detail</b>	<b>Date</b>

**JST**

<b>Part Description &amp; General Details:</b>		
Housing for 6.3 (.250) receptacle. Applicable JST terminal; STO-**(*)-250*(-*)		
<b>Series:</b>	63 Series	
<b>Drawing Ref:</b>	CS63N004-241194	
<b>Issued by:</b>	ZG	31.10.02
<b>Approved by:</b>	AR	31.10.02