

MATERIALS AND FINISHES

BODY: STAINLESS STEEL
PASSIVATED

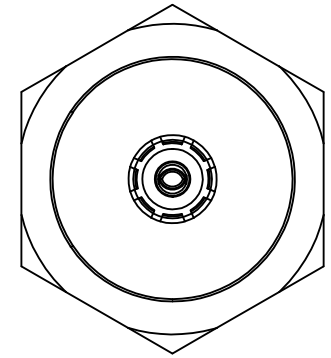
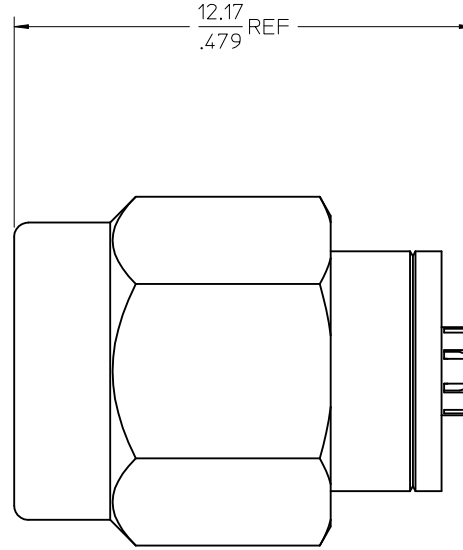
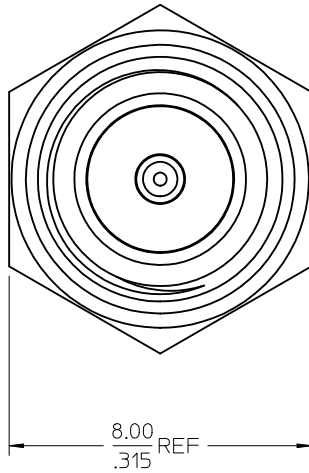
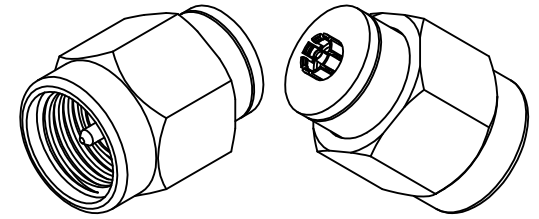
COUPLING NUT: BRASS
PLATED NICKEL

CONTACT: BERYLLIUM COPPER
PLATED GOLD

INSULATOR: TEFLON

GASKET: SILICONE RUBBER

SNAP RING: BERYLLIUM COPPER



73386-0862	73386-0860 20 PCS PER TRAY
73386-0861	73386-0860 ONE PIECE PER BAG
73386-0860	STANDARD
PART NO.	PACKAGING

CHG: ADDED -0862 FOR 20 PCS PER ONE TRAY EWR RF1-E082
 EC NO: URF2011-0685 2011/05/18
 DRWNG: CHENG
 CHKD:
 APPR: MHIUANG 2011/05/27

REV	DESCRIPTION
B3	

QUALITY SYMBOLS	GENERAL TOLERANCES (UNLESS SPECIFIED)
▽=0	mm INCH
▽=0	4 PLACES ± --- ± ---
	3 PLACES ± --- ± ---
	2 PLACES ± 0.10 ± ---
	1 PLACE ± 0.13 ± ---
	ANGULAR ± 2 °
	DRAFT WHERE APPLICABLE MUST REMAIN WITHIN DIMENSIONS

DIMENSION STYLE		SCALE	DESIGN UNITS	THIRD ANGLE PROJECTION
MM/IN			METRIC	
DRAWN BY	DATE	TITLE		
JOHN	2004/05/28	BSA, SMA PLUG TO U.FL JACK, 50 OHMS BSA-SMA/UFL		
CHECKED BY	DATE	MOLEX MOLEX INCORPORATED		
KENNY	2004/05/28	SD-73386-086		
APPROVED BY	DATE	SHEET NO.		
MISEN	2004/05/28	1 OF 1		
MATERIAL NO.	SEE TABLE	THIS DRAWING CONTAINS INFORMATION THAT IS PROPRIETARY TO MOLEX INCORPORATED AND SHOULD NOT BE USED WITHOUT WRITTEN PERMISSION		