

Electronic On-Delay Timers TA8-A/TA8-SA

IMO

New short body on-delay timers, with 16 ranges selectable from front panel. Plug-in or panel mounting

- Timing ranges 0.05 secs to 60 hours
- 16 ranges, front panel selectable
- DPCO timed contacts or SPCO timed plus SPCO instantaneous contact versions
- New scale ranges for ease of time setting
- Instantaneous output with dial set at 0
- Improved resistance to electromagnetic interference
- Indicators for time range, time up and power on/timing
- 48-DIN
- Plug-in octal base
- Sockets available for panel, surface or DIN rail mounting
- Approved by standards: UL and CSA



Options and ordering codes

DPCO	TA8-A	SPCO	TA8-SA
Timed contacts	24VAC/DC 100-240VAC 48-127VDC	Timed contacts plus instantaneous contacts	24VAC/DC 100-240VAC 48-127VDC
	voltage		voltage

Specification

Timing ranges (selectable)

Calibrated range – selected using screw in bottom left corner of front panel	Controlled timing range. Time unit selectable using the screw in the bottom right hand corner of the front panel			
	Time unit: 0.1 sec.	Time unit: sec.	Time unit: min.	Time unit: hrs.
0–6	0.05–0.6 secs.	0.5–6 secs.	0.5–6 mins.	0.5–6 hrs.
0–12	0.1–1.2	1–12	1–12	1–12
0–30	0.25–3	2.5–30	2.5–30	2.5–30
0–60	0.5–6	5–60	5–60	5–60

Repeat accuracy	±0.3% at max. setting time
Reset time	0.1 sec or less
Max. switching frequency	1800 times/hour
Allowable ambient temperature	-10 °C to +55 °C (Avoid ice on timer)
Mechanical life	20 million operations or more
Electrical life	100,000 operations or more at 250 V AC 5A resistive load
Allowable operating voltage range	0.85 to 1.1 times input voltage (0.9 to 1.1 at 55 °C)
Contact ratings	5A at 250 V AC resistive load
Power consumption	10VA at AC, 1W at DC
Supply frequency AC types	50/60 Hz
Dielectric strength	2,000 V AC rms. 1 min. between current carrying part and non current carrying part
	2,000 V AC rms. 1 min. between output contacts and control circuit
	1,000 V AC rms. 1 min. between open contacts
Insulation Resistance	100 MΩ or more at 500 V DC megger
Vibration	Mechanical durability: 10 to 55Hz, 0.75mm double amplitude
	Malfunction durability: 10 to 55Hz, 0.5mm double amplitude
Shock	Mechanical durability: 500m/s ² (Approx. 50G)
	Malfunction durability: 100m/s ² (Approx. 10G)

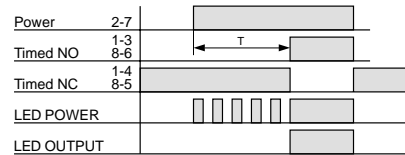
Electronic On-Delay Timers

TA8-A/TA8-SA continued

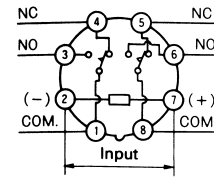


Timing and wiring diagrams

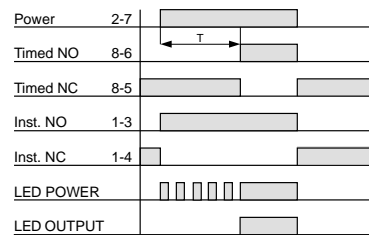
TA8-A



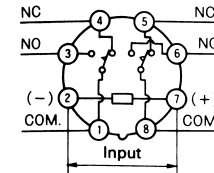
- When power is applied, the NO timed contacts make after the set time has elapsed.
- When power is removed the timer resets.



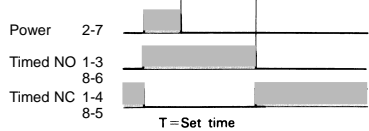
TA8-SA



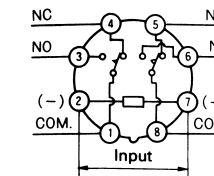
- Timed contact
When power is applied, the NO contact makes after the set time has elapsed.
When power is removed, the timer resets.
- Instantaneous contact
When power is applied, the NO contact makes instantly.
When power is removed, the timer resets.



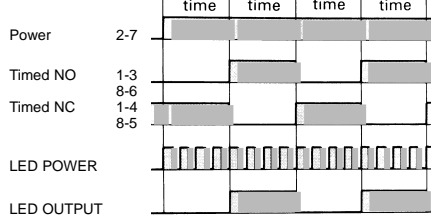
TA8-DA



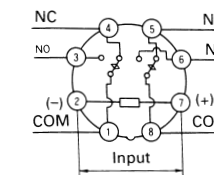
- When power (2-7) is ON, the NO timed contacts (1-3, 8-6) are instantly closed. When power is OFF, they are opened after the set time has elapsed.



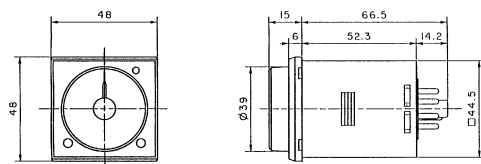
TA8-TA



- When power (2-7) is ON, the NO (1-3, 8-6) and the NC (1-4, 8-5) timed contacts are alternately closed to repeat the ON-OFF operations.
- When power is OFF the timer resets.

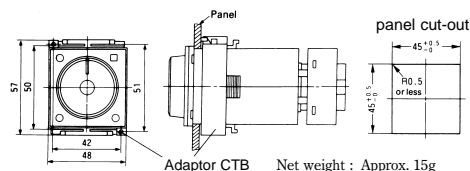


Dimensions (mm)



Net weight : Approx. 100g

Flush mounting

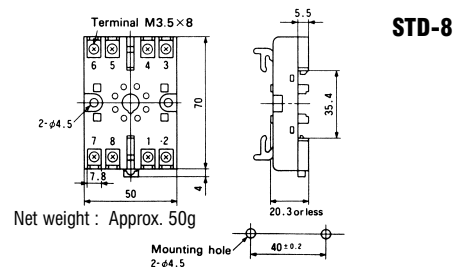


Adaptor CTB Net weight : Approx. 15g

Note: For flush mounting, an adaptor CTB is required (sold separately).
When ordering, specify the adaptor type.

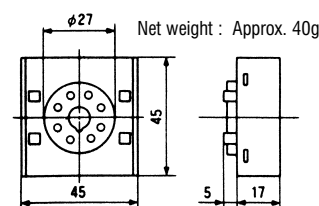
Sockets

Surface/track mounting – screw terminal

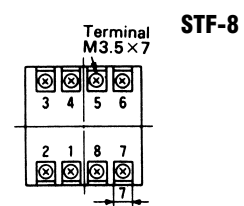


Net weight : Approx. 50g

Flush mounting – screw terminal



Net weight : Approx. 40g



Flush mounting – solder terminal

