

R95-113



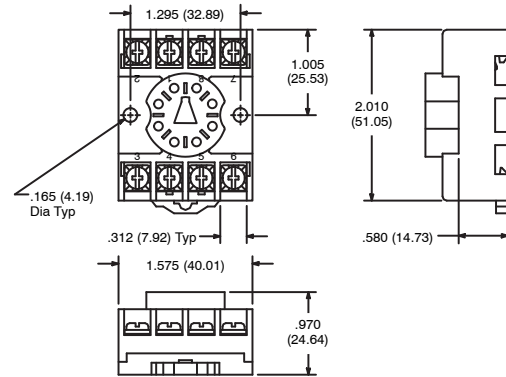
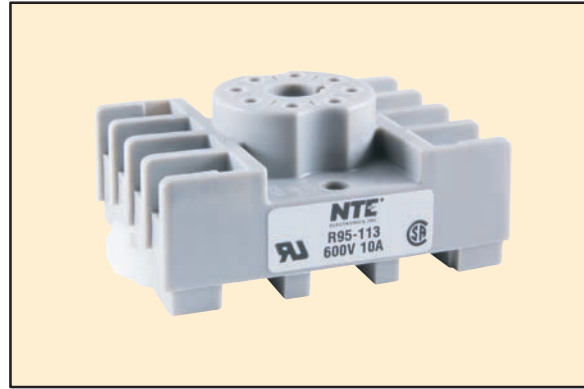
8-Pin Octal Socket

Features

- Panel/Surface Mount
- DIN Rail Mountable
- Pressure Clamp Screws

Electrical Rating:

300 Volts, 10 Amps



R95-114



11-Pin Octal Socket

Features

- Panel/Surface Mount
- DIN Rail Mountable
- Pressure Clamp Screws

Electrical Rating:

300 Volts, 10 Amps

