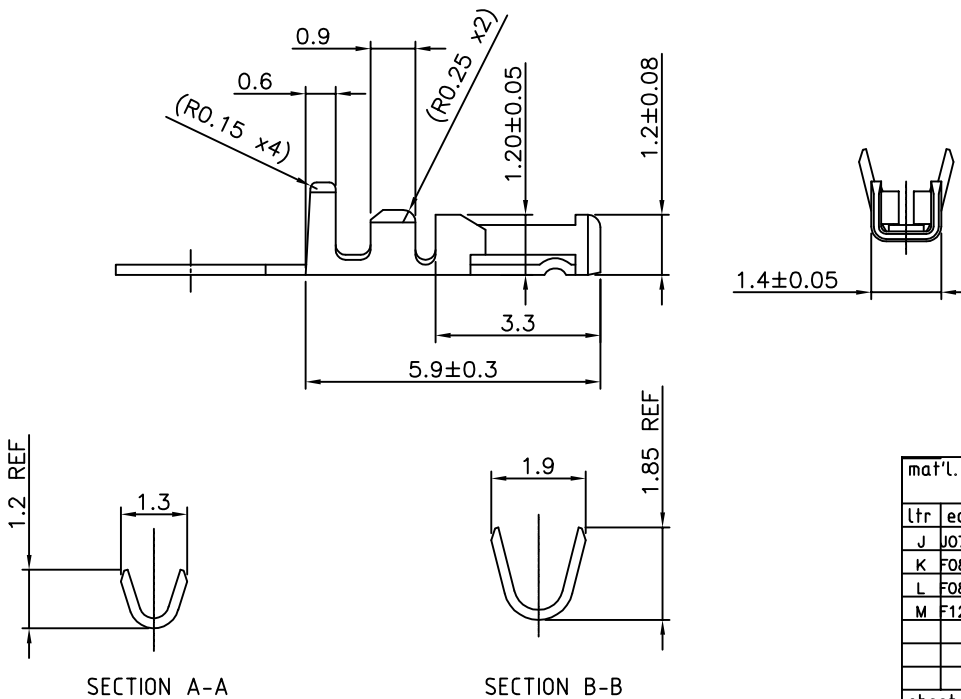
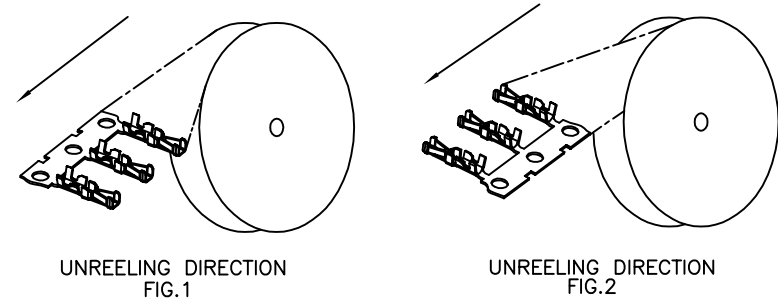
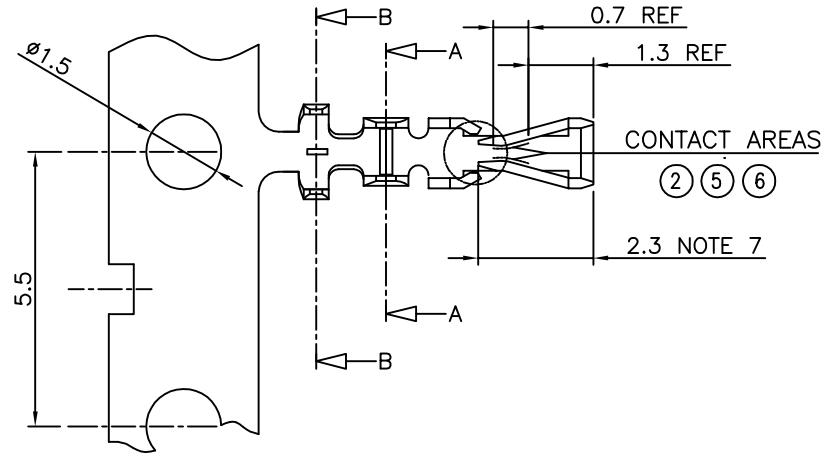


PRODUCT NO.	FINISH	REELING DIRECTION
77138-001LF	NOTE 2	FIG.1
77138-101LF	NOTE 6	FIG.1
77138-201LF	NOTE 5	FIG.1
77138-001REL	NOTE 2	FIG.2
77138-101REL	NOTE 6	FIG.2



NOTES

- 1 MATERIAL : PHOSPHOR BRONZE
- ② FINISH : SELECTIVE GOLD PLATING 0.2µm MIN (CONTACT AREA) OVER 1.27µm Ni MIN
- 3 WIRE RANGE : AWG 26-30
INSULATOR DIAMETER : Ø1.4 MAX
- 4 GENERAL TOLERANCE : ±0.25
- ⑤ FINISH : SELECTIVE GOLD PLATING 0.5µm MIN (CONTACT AREA) OVER 1.27µm Ni MIN
- ⑥ FINISH : SELECTIVE GOLD PLATING 0.76µm MIN (CONTACT AREA) OVER 1.27µm Ni MIN
- 7 REMAINDER : GOLD FLASH
a- UNDERPLATING 1.27µm Ni MIN ALL OVER
- 8 THIS PRODUCT MEETS EUROPEAN UNION DIRECTIVES AND OTHER COUNTRY REGULATIONS AS DESCRIBED IN GS-22-008
- 9 CRIMP SPECIFICATION AS PER 100-006

mat'l. code		surface		tolerance		projection		product family	
SEE NOTES		ISO 1302		ISO 406 ISO 1101				MINITEK	
ltr	ecn no	dr	date	tolerances unless otherwise specified				title	
J	J07-0092	R.S	07.02.07	angles	linear	mm		CTW MINITEK	
K	F08-0122	JCO	08.05.05			.x ±0.25		AWG 26-30	
L	F08-0174	JCO	08.05.20			.xx ±0.15		scale 5:1	
M	F12-0004	JCO	12.01.04	dr	L.MULIN	08.01.28		dwg no	
				engr	J.COMPAGNON	08.01.28		sheet 1 of 1	
				chr				size	
				appd	J.CO	08.05.05		77138	
sheet index		revision sheet						type CUSTOMER Drawing	