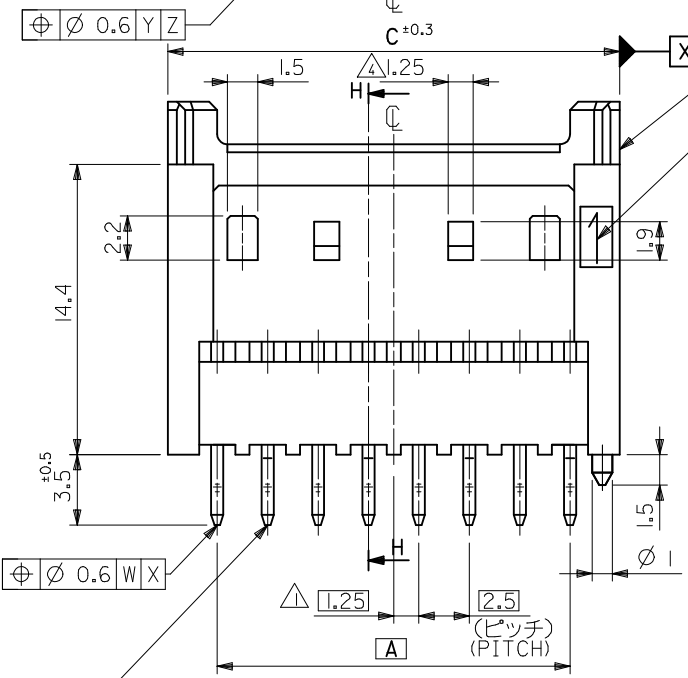
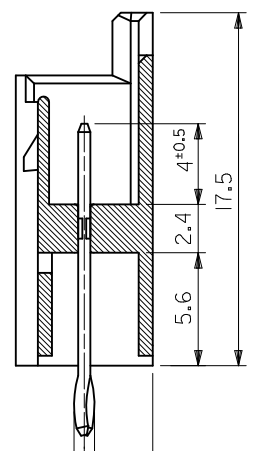


基板取付穴推奨寸法 (マウント面)  
 RECOMMENDED P.C.BOARD HOLE DIMENSION  
 (MOUNTING SIDE)  
 (τ=1.6) (SCALE 5 : 1)



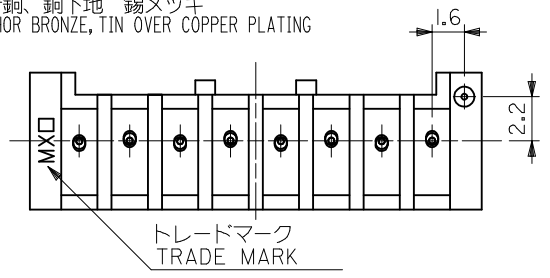
ウエハー  
 WAFER  
 NYLON66,UL94V-0

回路番号1  
 CIRCUIT NO.1



断面 H-H  
 SECT. H-H

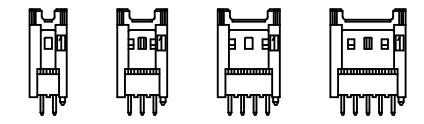
リン青銅、銅下地 錫メッキ  
 PHOSPHOR BRONZE, TIN OVER COPPER PLATING



トレードマーク  
 TRADE MARK

注記  
 NOTES

- △ 偶数極品に適用。  
 APPLIES ONLY TO EVEN NO. CKT. SIZES.
- 2. 嵌合相手 : 51103,51136 シリーズ  
 MATES WITH : 51103,51136 SERIES.
- 3.ELV AND RoHS COMPLIANT.
- △ 2、3極品において、下記寸法とする。  
 DIMENSIONS OF 2 AND 3 CKTS IS FOLLOWING.
- 2CKTS : NONE  
 3CKTS : 1
- 5. MATERIAL  
 WAFER PA, UL94V-0, COLOR : NATURAL  
 PIN PHOSPHOR BRONZE, TIN OVER COPPER PLATING



2極 3極 4極 5極  
 2 CKT. 3 CKT. 4 CKT. 5 CKT.

ロック形状図  
 LOCK CONFIGURATION

|      |      |      |                        |                 |
|------|------|------|------------------------|-----------------|
| 39.9 | 38.2 | 35   | 53517 - 1510           | 15              |
| 37.4 | 35.7 | 32.5 | ↑ - 1410               | 14              |
| 34.9 | 33.2 | 30   | - 1310                 | 13              |
| 32.4 | 30.7 | 27.5 | - 1210                 | 12              |
| 29.9 | 28.2 | 25   | - 1110                 | 11              |
| 27.4 | 25.7 | 22.5 | - 1010                 | 10              |
| 24.9 | 23.2 | 20   | - 0910                 | 9               |
| 22.4 | 20.7 | 17.5 | - 0810                 | 8               |
| 19.9 | 18.2 | 15   | - 0710                 | 7               |
| 17.4 | 15.7 | 12.5 | - 0610                 | 6               |
| 14.9 | 13.2 | 10   | - 0510                 | 5               |
| 12.4 | 10.7 | 7.5  | - 0410                 | 4               |
| 9.9  | 8.2  | 5    | ↓ - 0310               | 3               |
| 7.4  | 5.7  | 2.5  | 53517 - 0210           | 2               |
| C    | B    | A    | TRAY PACKAGE ORDER NO. | 極数 NO. OF CKTS. |

|   |   |   |   |                                     |                    |  |                              |   |                     |  |  |
|---|---|---|---|-------------------------------------|--------------------|--|------------------------------|---|---------------------|--|--|
| REVISED<br>EC NO: J2010-0837<br>DRWN:TKON 2009/10/26<br>CHKD:KASAKAWA 2009/10/26<br>APPR:NIKIITA 2009/10/26 | GENERAL TOLERANCES (UNLESS SPECIFIED)                   |   | DIMENSION STYLE<br>MM ONLY  |                                     | SCALE<br>4:1       | DESIGN UNITS<br>METRIC                   |                              | THIRD ANGLE PROJECTION  |                     |  |  |
|   | 10 UNDER ±0.3<br>10 OVER 30 UNDER ±0.25<br>30 OVER ±0.2 | ANGULAR ±3 °<br>DRAFT WHERE APPLICABLE<br>MUST REMAIN WITHIN DIMENSIONS |   | DRAWN BY DATE<br>K. TOJO 1994/05/16 |                    | CHECKED BY DATE<br>S. KUNISHI 1994/05/16 |                              | TITLE<br>2.5 WIRE TO BOARD CONN.<br>WAFER ASSY<br>-LEAD FREE- |                     |  |  |
|   | APPROVED BY DATE<br>M. FUKUSHIMA 1994/05/16             |   | MATERIAL NO.<br>SEE TABLE   |                                     | MOLEX INCORPORATED |  | DOCUMENT NO.<br>SD-53517-001 |   | SHEET NO.<br>1 OF 1 |  |  |
|   | SIZE<br>A3  |   | THIS DRAWING CONTAINS INFORMATION THAT IS PROPRIETARY TO MOLEX INCORPORATED AND SHOULD NOT BE USED WITHOUT WRITTEN PERMISSION |                                     |                    |  |                              |   |                     |  |  |