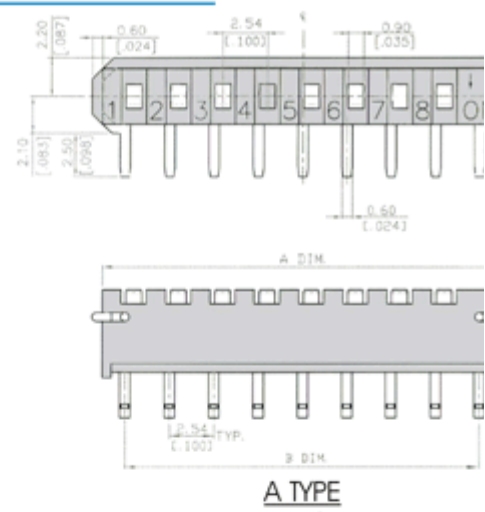
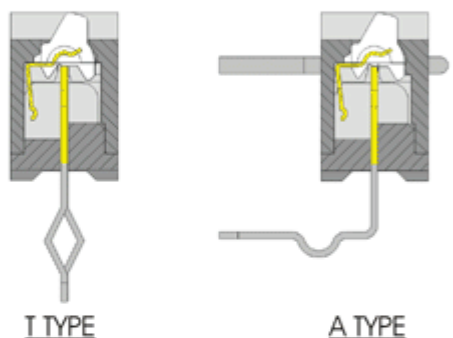


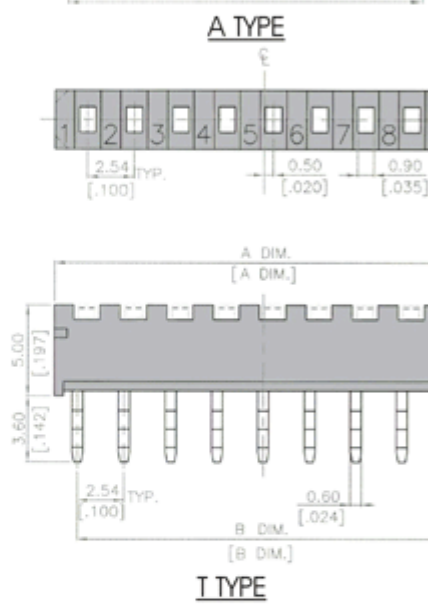
**DIMENSIONS**



**CONTACT SYSTEM OF SIP SERIES**

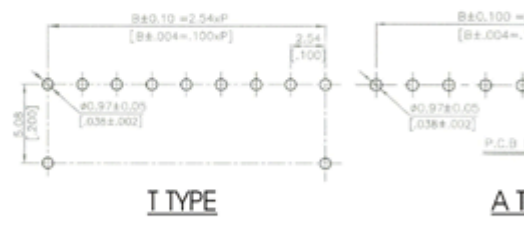


- △ Double contacts.
- △ Low contact resistance.
- △ High reliability.
- △ Self-clean on contact area.



**FEATURES**

1. Splay terminals allow for automatic insertion by IC insertion machine.
2. Insert molding of terminals and ultrasonic welding.
3. High density and thinner outline to reduce package space.
4. High pressure contact structure to prevent vibration shock.
5. Double contacts offers high reliability.



**MATERIALS**

- △ COVER: UL 94V-0 Nylon High-Temp. Thermoplastic. Color: Black.
- △ BASE: UL 94V-0 PBT or Nylon High-Temp. Thermoplastic. Color: Black.
- △ ACTUATOR: UL94V-0 Nylon Thermoplastic. Color: White.
- △ CONTACT PLATING: Gold plating over nickel
- △ TERMINAL: Tin/Lead Solder.

**TERMINAL TYPE**

