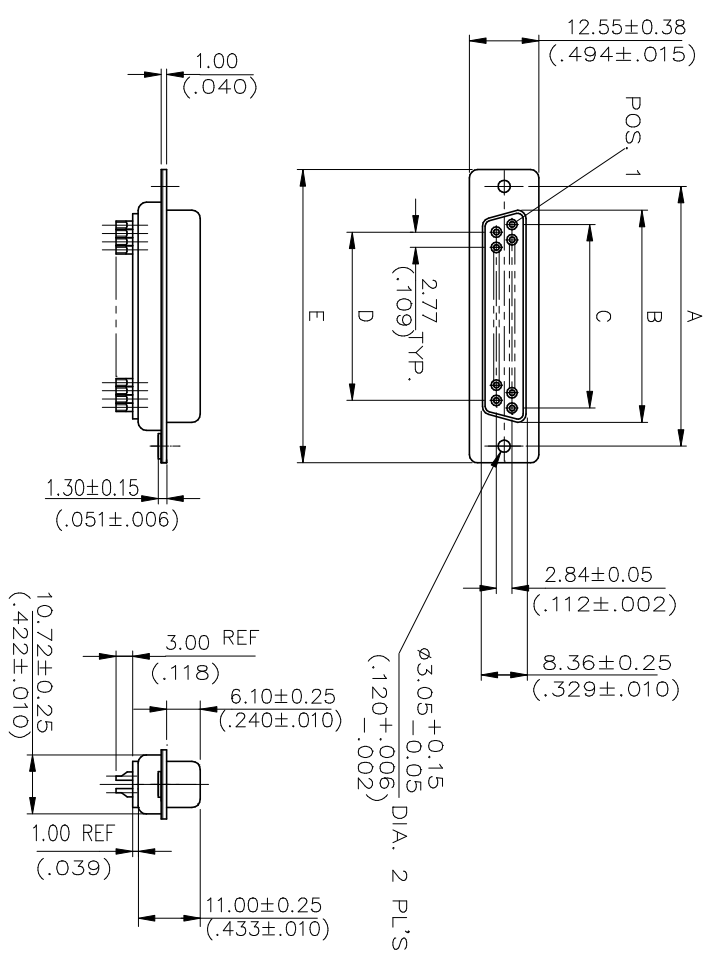


REV.	ZONE	LTR	DESCRIPTION	DATE	REVISER	APPD
------	------	-----	-------------	------	---------	------



SPECIFICATIONS :

- .CURRENT RATING : 5 Amp.
- .INSULATION RESISTANCE : 5000MΩ MIN. AT 500 V DC.
- .DELECTRIC WITHSTANDING VOLTAGE : AC 1000V MIN.(FOR 1 MINUTE)
- .CONTACT RESISTANCE : 15m ΩMAX. MATED
- .OPERATING TEMPERATURE : -55 C - +105 C
- .INSULATOR MATERIAL : PBT & GLASS-FIBER REINFORCED UL 94V-0
- .CONTACT MATERIAL : BRASS, GOLD OVER NICKEL IN CONTACT AREA, TIN PLATED SOLDER CUP.
- .SHELL : STEEL, TIN OR ZINC PLATED.

PART NUMBER
 8S0 009 SS-3 0 4 S- **
 (1) (2) (3) (4) (5) (6) (7) (8)

- SERIES
8-S : D-SUB SOLDER CUP CONNECTOR
- NUMBER OF CONTACTS
 .009 - 9 POSITIONS
 .015 - 15 POSITIONS
 .019 - 19 POSITIONS
 .023 - 23 POSITIONS
 .025 - 25 POSITIONS
 .037 - 37 POSITIONS
 .050 - 50 POSITIONS
- CONTACT TYPES
 .PM : MACHINED CONTACT (PLUG)
 .SM : MACHINED CONTACT (RECEPTACLE)
 .PS : STAMPED CONTACT (PLUG)
 .SS : STAMPED CONTACT (RECEPTACLE)
- COLOR CODES
 .1 - BLUE
 .2 - GRAY
 .3 - BLACK
 .4 - WHITE
- CONTACT FINISH
 .0 - GOLD FLASH OVER 50μ" NICKEL
 .2 - 15μ" GOLD OVER 50μ" NICKEL
 .3 - 30μ" GOLD OVER 50μ" NICKEL
 .4 - GOLD FLASH OVERALL CONTACT
 .C - 5 μ" GOLD OVER 50 μ" NICKEL
- MATAL SHELL FINISH
 .0 - WITHOUT METAL SHELL (ALL PLASTIC TYPE)
 .1 - TIN PLATED SHELL WITH GROUNDING INDENTS (INDENTS ON PLUG INLY)
 .2 - YELLOW CHROMATE OVER ZINC SHELL
 .3 - YELLOW CHROMATE WITH GROUNDING INDENTS
 .4 - TIN PLATED SHELL WITHOUT GROUNDING INDENTS.
- MOUNTING TYPE
 .S : STANDARD HOLE
 .T : #4-40UNC NUT HEIGHT 5.0 STAND OFF
 .B : ø 3.20 THRU HOLE, HEIGHT 5.0 STAND OFF
- SUFFIX

57.71 (2.272)	69.40 (2.732)	47.09 (1.854)	49.86 (1.963)	54.84 (2.159)	63.05 (2.500)	37	8S0037S
41.30 (1.625)	53.09 (2.090)	30.47 (1.200)	33.24 (1.309)	38.38 (1.511)	47.04 (1.852)	25	8S0025S
38.30 (1.507)	50.30 (1.980)	27.70 (1.090)	30.47 (1.200)	35.30 (1.389)	44.30 (1.744)	23	8S0023S
32.80 (1.291)	44.80 (1.763)	22.16 (.872)	24.93 (.981)	30.00 (1.181)	38.86 (1.529)	19	8S0019S
27.51 (1.083)	39.10 (1.539)	16.62 (.654)	19.39 (.763)	24.66 (.971)	33.32 (1.312)	15	8S0015S
19.28 (.759)	30.89 (1.216)	8.31 (.327)	11.08 (.436)	16.33 (.643)	24.99 (.984)	9	8S0009S

F±0.25 E±0.38 D±0.13 C±0.13 B±0.25 A±0.15 NO. OF POSITIONS PART NO.
 (±.010) (±.015) (±.005) (±.005) (±.010)

MATERIAL	TOLERANCE UNSPECIFIED	SCALE	UNIT
.0 0 0	±	1 : 1	mm (INCH)
.0 0	±		
.0	±		

FINISH	ANGLE	NAME	SCALE	UNIT	SHEET
DRAWN	±	李淑萍	1 : 1	mm (INCH)	1/1
DESIGNER					
CHECKED					
APPROVED					

FINISH	ANGLE	NAME	SCALE	UNIT	SHEET
DRAWN	±	李淑萍	1 : 1	mm (INCH)	1/1
DESIGNER					
CHECKED					
APPROVED					