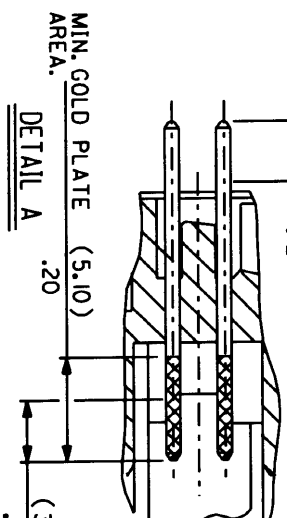
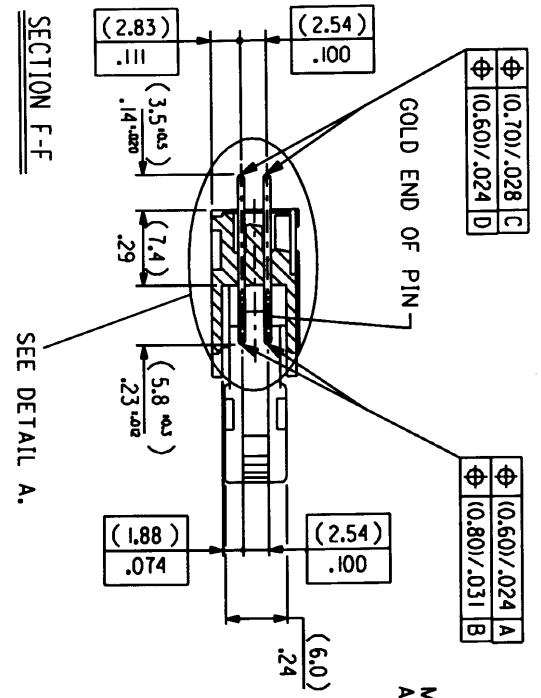
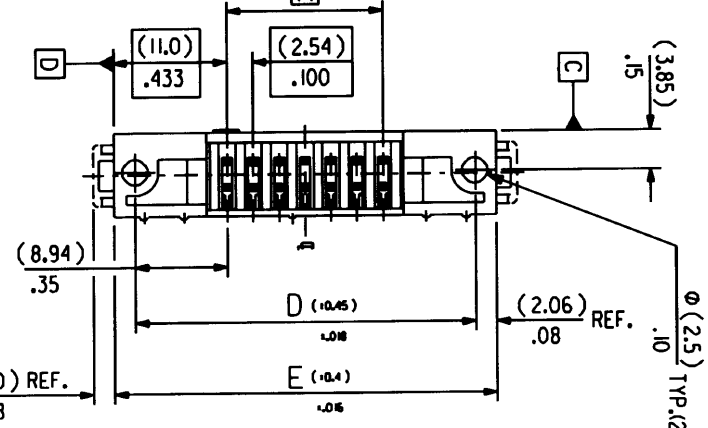
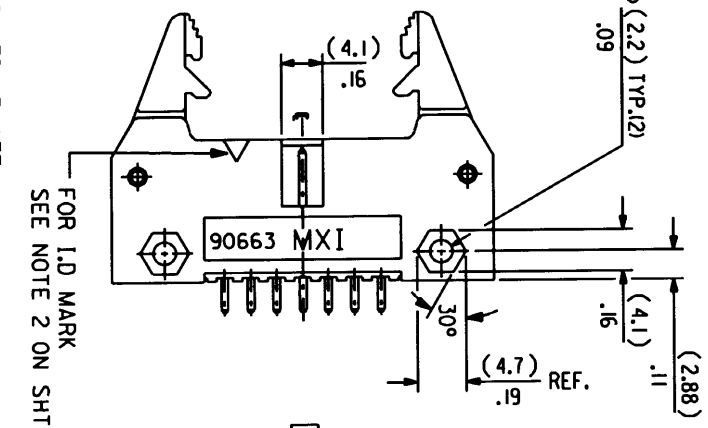
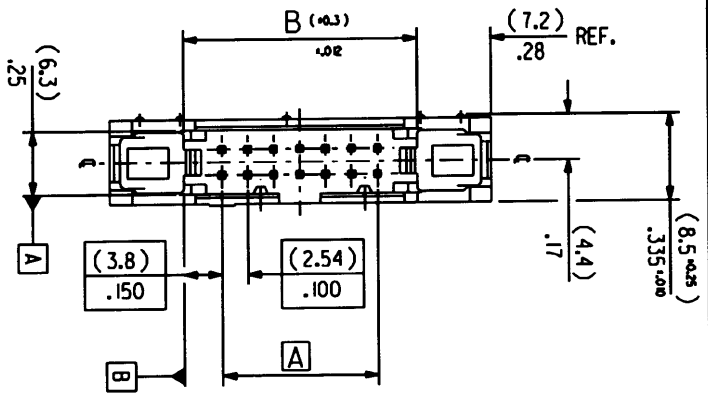
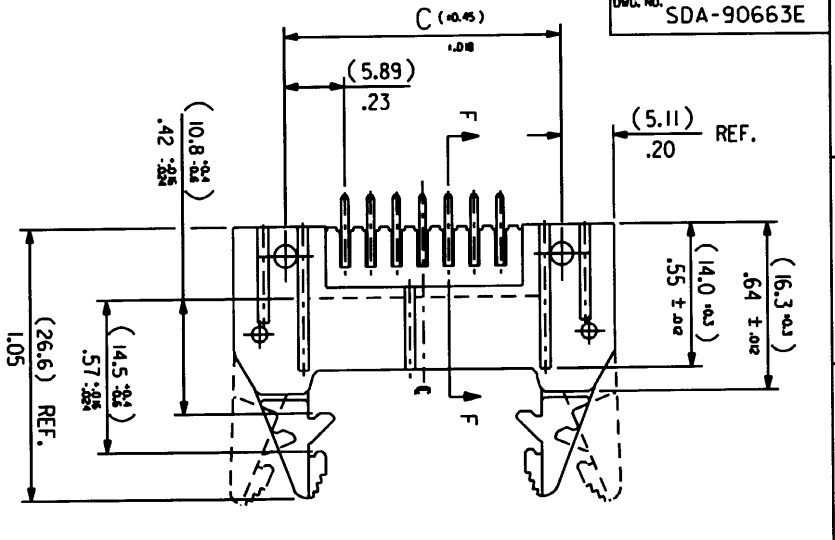


PART NO. SEE CHART
 Dwg. NO. SDA-90663E



DETAIL A
 DIMENSIONS FOR SELECTIVE
 PLATING'S, SCALE 4:1

MEASURE POINT FOR GOLD PLATING THICKNESS TYP.
 NOTES:
 1. FOR MATERIAL SPECIFICATION SEE NOTE 1. ON SHEET 2.
 2. FOR RECOMMENDED P.C.B. HOLE PATTERN, PART NO'S AND UNSTATED DIMENSIONS SEE SHEET 2.
 3. PRODUCT SPEC. NO. ES 99020-0015.

*Part Nos 318-9049
 to 318-0130*

ADD OPTIONS SHT 5		EC NO. E2001-0621		DRAWN: CPHEHIR 00/11/29	
CHK: /		APP: /		REV	
QUALITY SYMBOLS		GENERAL TOLERANCES (UNLESS SPECIFIED)		SCALE	
MAJOR	MINOR	M/M	I/NCH	2 : 1	DESIGN UNITS
CRITICAL				MIN	MM
					INCH
1 PLACES ±0		DRAWN BY & DATE		THIRD ANGLE PROJECTION	
2 PLACES ±0.02		POB 90/08/03		DIMENSIONS:	
3 PLACES ±0.008		CHECKED BY & DATE		M/M	
4 PLACES ±0.008		90/08/03		I/NCH	
1 PLACE ±0.20		APPROVED BY & DATE		M/M	
ANGULAR ± 2 °		90/08/03		ONLY	
DRAFT WHERE APPLICABLE MUST REMAIN WITHIN DIMENSIONS		CAD FILENAME		SHT	
		SQ90663X1.dgn		1	
		MATERIAL NO.		REV	
		SDA-90663E		2	
		DRAWING NO.		3	
		SDA-90663E		4	
		SHEET NO.		5	
		10F 6		6	
		SIZE		B	
		B		C	
		C		D	
		D		E	
		E		F	
		F		G	
		G		H	
		H		I	
		I		J	
		J		K	
		K		L	
		L		M	
		M		N	
		N		O	
		O		P	
		P		Q	
		Q		R	
		R		S	
		S		T	
		T		U	
		U		V	
		V		W	
		W		X	
		X		Y	
		Y		Z	

SECTION F-F
 SEE DETAIL A.

MOLEX INCORPORATED
 OF50 Srd HDR
 V+ W/ELV

PART NO. SEE CHART
 DWG. NO. SDA-90663E

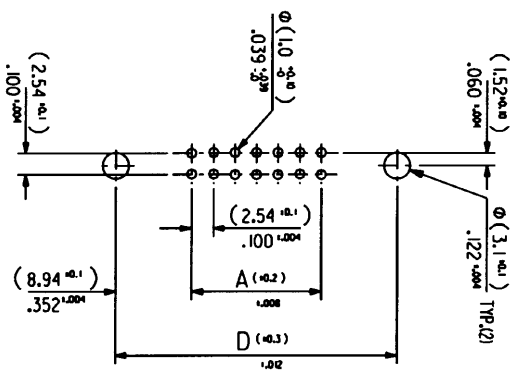
(78.74)/3.100	(86.34)/3.400	(90.52)/3.564	(96.62)/3.804	(100.74)/3.966	90663-1641	90663-1642	90663-1643		64
(73.66)/2.900	(81.26)/3.200	(85.44)/3.364	(91.54)/3.604	(95.66)/3.766	-1601	-1602	-1603		60
(60.96)/2.400	(68.56)/2.700	(72.74)/2.864	(78.84)/3.104	(82.96)/3.266	-1501	-1502	-1503	90663-1509	50
(48.26)/1.900	(55.86)/2.200	(60.04)/2.364	(66.14)/2.604	(70.26)/2.766	-1401	-1402	-1403	-1409	40
(40.64)/1.600	(48.24)/1.900	(52.42)/2.064	(58.52)/2.304	(62.64)/2.466	-1341	-1342	-1343	-1349	34
(35.56)/1.400	(43.16)/1.700	(47.34)/1.864	(53.44)/2.104	(57.56)/2.266	-1301	-1302	-1303	-1309	30
(30.48)/1.200	(38.08)/1.500	(42.26)/1.664	(48.36)/1.904	(52.48)/2.066	-1261	-1262	-1263	-1269	26
(22.86)/.900	(30.46)/1.200	(34.64)/1.364	(40.74)/1.604	(44.86)/1.766	-1201	-1202	-1203	-1209	20
(17.78)/.700	(25.38)/1.000	(29.56)/1.164	(35.66)/1.404	(39.78)/1.566	-1161	-1162	-1163	-1169	16
(15.24)/.600	(22.84)/.900	(27.02)/1.064	(33.12)/1.304	(37.24)/1.466	-1141	-1142	-1143	-1149	14
(10.16)/.400	(17.76)/.700	(21.94)/.864	(28.04)/1.104	(32.16)/1.266	90663-1101	90663-1102	90663-1103	90663-1109	10
A	B	C	D	E	ENG. NO. GSI PLATING	ENG. NO. GSI PLATING	ENG. NO. GSI PLATING	ENG. NO. PRE TIN	NO. OF CKTS.

NOTES

MATERIAL
 HEADER : GLASS FILLED POLYESTER (UL 94V0), COLOUR - BLACK.
 PINS : BRASS SIZE 0(0.635)/.025 .
 LEVER : GLASS FILLED POLYESTER (UL 94V0), COLOUR - BLACK.

2.COLOUR IDENTIFICATION MARK FOR PLATING OPTIONS.

- 90663-1**1, (1um)/.039uin MIN. NICKEL UNDERPLATE, CONTACT AREA GSI PLATING
 TIN, COLOUR MARK: YELLOW.
- 90663-1**2, (1um)/.039uin MIN. NICKEL UNDERPLATE, CONTACT AREA GSI PLATING
 TIN, COLOUR MARK: BROWN.
- 90663-1**3, (1um)/.039uin MIN. NICKEL UNDERPLATE, CONTACT AREA GSI PLATING
 (0.25um)/.010uin MIN. GOLD, SOLDER AREA (3um)/.18uin MIN. TIN, COLOUR MARK: BLUE.
- 90663-1**9, (0.5-1um)/.020-.040uin NICKEL UNDER (1.0-3.0um)/.039-.118uin TIN, COLOUR MARK: BLACK, (NO MARK).



RECOMMENDED P.C.B.HOLE PATTERN.

SEE SHEET 1
EC NO. E2001-0353
DRW. CPHEHIR 000929
CHK. /
APP. /
REV. DESCRIPTION
C

QUALITY STANDARDS	GENERAL TOLERANCES UNLESS SPECIFIED	SCALE	DESIGN UNITS	TITLE
MIL-STD-883C	2 ± .1 INCH	2 : 1	INCH	OF50 S-rd HDR
	4 PLACES ±0.01	DRAWN BY & DATE	POB 90/11/07	Vt W/ELV
	3 PLACES ±0.008	CHECKED BY & DATE	90/11/07	
	2 PLACES ±0.020	APPROVED BY & DATE	90/11/07	
	1 PLACE ±0.20	CAD FILENAME	SD90663x2.dgn	
	ANGULAR: ± 2 °	MATERIAL NO.	SDA-90663E	

THIRD ANGLE PROJECTION	DIMENSIONS: DIM IN INCH DIM IN MM DIM IN ONLY	SMT REV
		2 OF
		SIZE B
		SHEET NO.
		DRAWING NO.
		SDA-90663E
		2 OF
		SIZE B

