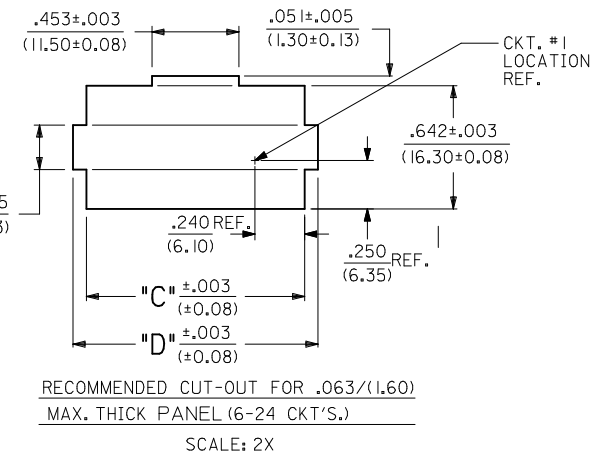
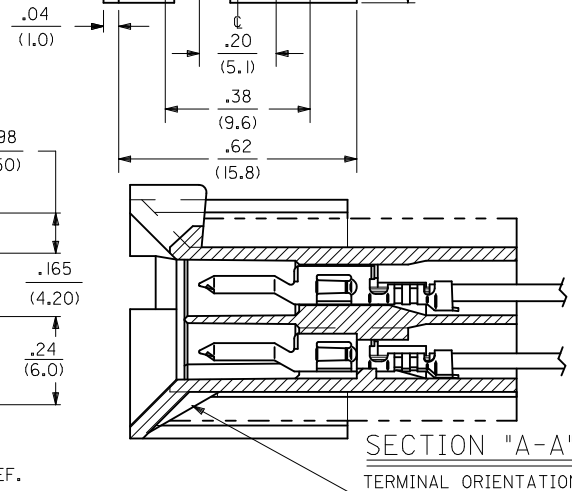
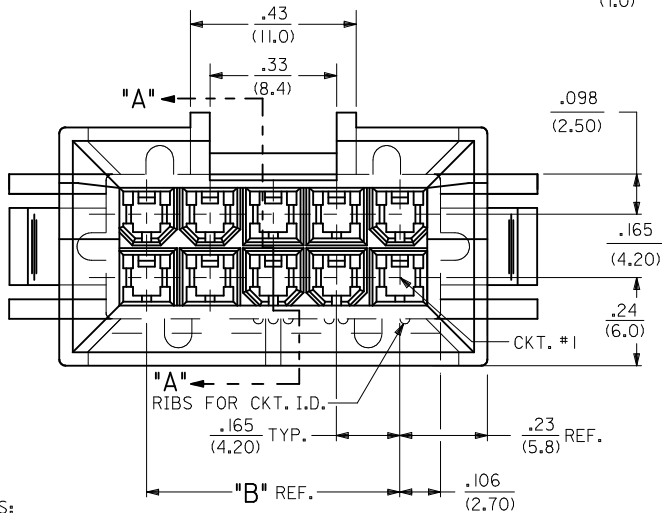


CIRCUIT SIZE	DIM. "A"	DIM. "B"	DIM. "C"	DIM. "D"
6	.54 (13.8)	.33 (8.4)	.807 (20.50)	.945 (24.00)
8	.71 (18.0)	.50 (12.6)	.972 (24.70)	1.110 (28.20)
10	.87 (22.2)	.66 (16.8)	1.138 (28.90)	1.276 (32.40)
12	1.04 (26.4)	.83 (21.0)	1.303 (33.10)	1.441 (36.60)
14	1.20 (30.6)	.99 (25.2)	1.469 (37.30)	1.606 (40.80)
16	1.37 (34.8)	1.16 (29.4)	1.643 (41.50)	1.772 (45.00)
18	1.54 (39.0)	1.32 (33.6)	1.799 (45.70)	1.937 (49.20)
20	1.70 (43.2)	1.49 (37.8)	1.965 (49.90)	2.102 (53.40)
22	1.87 (47.4)	1.65 (42.0)	2.130 (54.10)	2.268 (57.60)
24	2.03 (51.6)	1.82 (46.2)	2.295 (58.30)	2.433 (61.80)



NOTES:

- MATERIAL:
 - 1 = NYLON (PA6/6), UNFILLED, UL94 V-2, COLOR: NATURAL
 - 2 = NYLON (PA6/6), UNFILLED, UL94 V-0, COLOR: NATURAL
 - 3 = NYLON (PA6/6), UNFILLED, UL94 V-2, COLOR: BLACK
 - 4 = NYLON (PA6/6), UNFILLED, UL94 V-0, COLOR: BLACK
- FINISH NOT APPLICABLE.
- THIS PART CONFORMS TO MOLEX PRODUCT SPEC. NO. PS-5556-002.
- PACKAGING: PK-42474-001
- 6-24 CKT. PARTS MATE WITH MOLEX RECEPTACLES 5557, 42385 AND 42474. 2 AND 4 CKT. PARTS MATE WITH 42385 AND 42474 ONLY.
- PART IS FOR USE WITH MALE TERMINAL #5558.
- PART ALLOWS FOR UP TO .100/(2.54) MISALIGNMENT WITH MATING RECEPTACLE IN ANY DIRECTION. SEE MATING CONNECTOR DRAWINGS FOR SPECIFIC ALLOWANCES.
- PANEL CUT-OUT TO BE PUNCHED IN THE SAME DIRECTION AS CONNECTOR INSERTION.
- PART CONFORMS TO CLASS "B" REQUIREMENTS OF COSMETIC SPECIFICATION PS-45499-022.

- FOR MANUFACTURING EASE PARTS MAY HAVE OPTIONAL EJECTOR RIBS. SEE SHT. 3 FOR LOCATION.
- DIMENSION DOES NOT INCLUDE EJECTOR RIBS (SEE PAGE #3 FOR PARTS WITH RIBS, RIB DIMENSIONS AND LOCATION).
- IF THIS PRODUCT IS STORED IN AN ENVIRONMENT WITH A RELATIVE HUMIDITY OF LESS THAN 50%, MOISTURE MUST BE ADDED. REFER TO TECHNICAL ADVISORY AS-45499-001 FOR INSTRUCTIONS.
- INTERIOR RIB LOCATION MAY VARY.

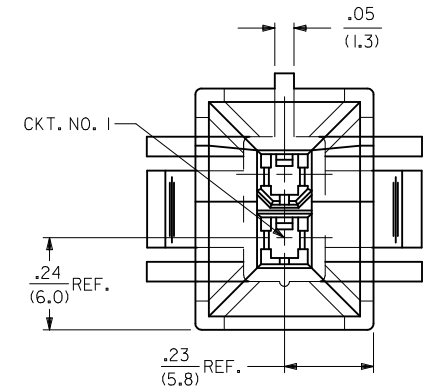
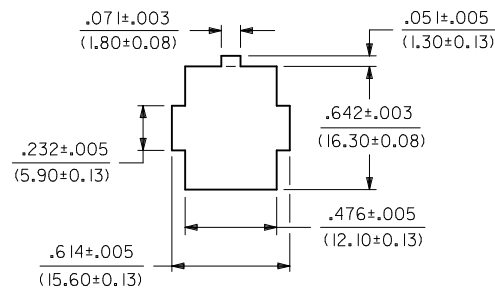
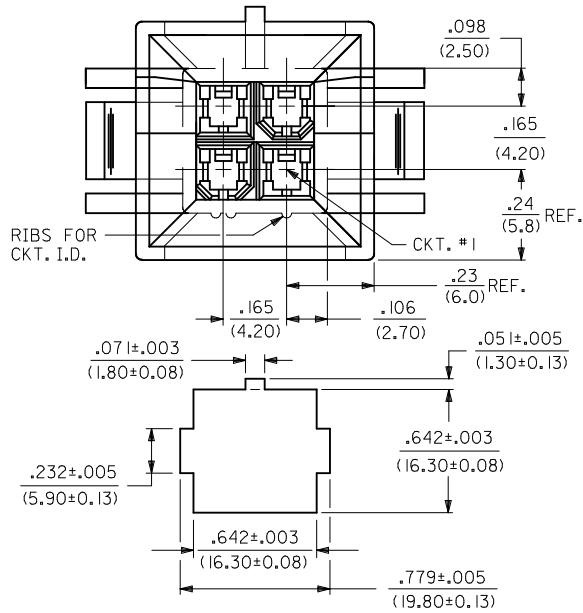
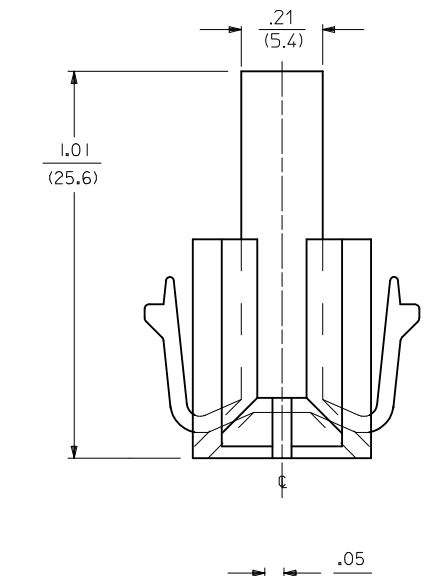
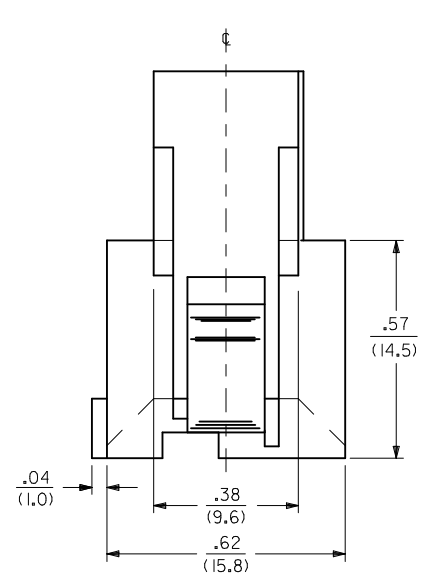
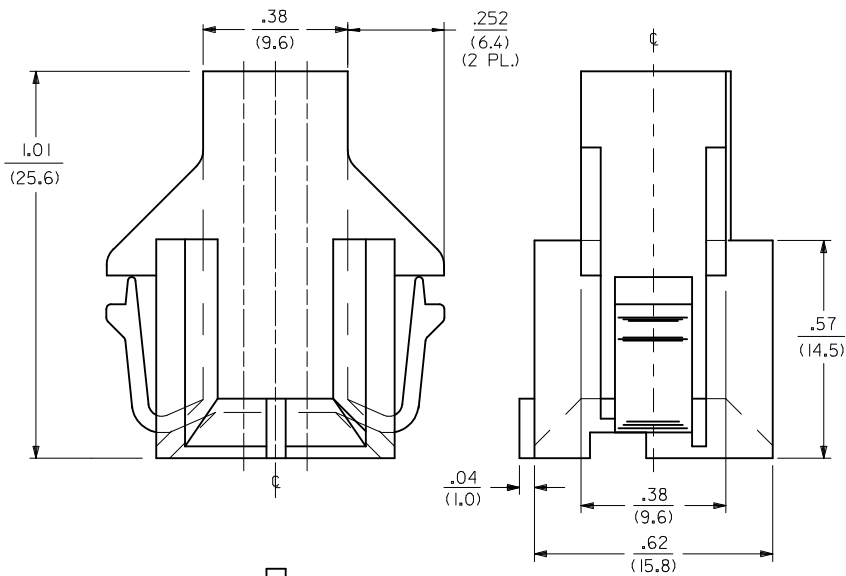
- CONNECTOR ASSEMBLIES ARE NOT TO BE MATED OR UNMATED WHILE CIRCUITS ARE LIVE.
- WIRES ARE TO BE DRESSED IN SUCH A MANNER TO ALLOW THE TERMINALS TO FLOAT FREELY IN THE POCKET.

SEE SHEET 2 FOR 2 & 4 CKT. PARTS

REMOVE EAR DESIGN EC NO: UCP2011-3627 DRAWN: NGUYEN CHKD: BELL APPR: FSMITH 2011/05/19 2011/05/19 2011/09/02	QUALITY SYMBOLS ∇=0 ∇=0 ∇=0	GENERAL TOLERANCES (UNLESS SPECIFIED)		DIMENSION STYLE IN/MM		SCALE 4:1	DESIGN UNITS METRIC	THIRD ANGLE PROJECTION			
		4 PLACES ± --- ± ---	3 PLACES ± --- ± .010	DRAWN BY GEP	DATE 1989/07/18	TITLE PLUG HOUSING B.M.I. 2-24 CIRCUITS MINI-FIT SERIES					
		2 PLACES ± 0.25 ± .015	1 PLACE ± 0.38 ± ---	CHECKED BY RJF	DATE 1989/07/18	APPROVED BY FSMITH					
		ANGULAR ±1/2°		MATERIAL NO. SEE SHEET 4		DATE 2011/09/02		DOCUMENT NO. SD-42475-***1		SHEET NO. 1 OF 4	

DRAFT WHERE APPLICABLE MUST REMAIN WITHIN DIMENSIONS

THIS DRAWING CONTAINS INFORMATION THAT IS PROPRIETARY TO MOLEX INCORPORATED AND SHOULD NOT BE USED WITHOUT WRITTEN PERMISSION



RECOMMENDED CUT-OUT FOR .063/(1.60)
MAX. THICK PANEL (4 CKT'S.)
SCALE: 2X

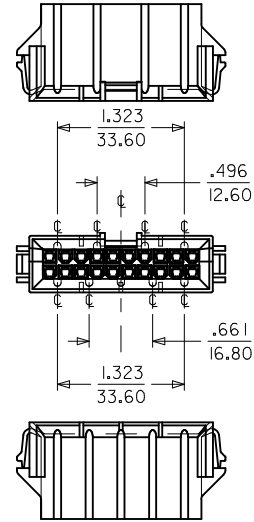
RECOMMENDED CUT-OUT FOR .063/(1.60)
MAX. THICK PANEL #1 (2 CKT'S.)

SCALE: 2X

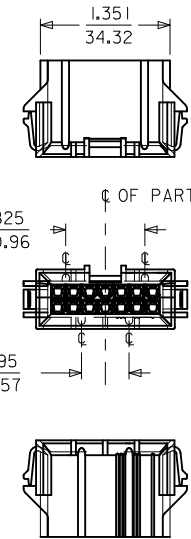
2 CKT.

4 CKT.

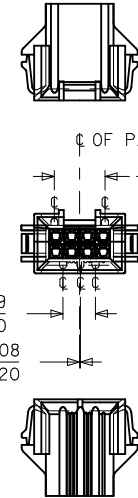
SEE SHEET 1 EC NO: UCP2011-3627 DRAWN: NGUYEN 2011/05/19 CHKD: BELL 2011/05/19 APPR: FSMITH 2011/09/02	QUALITY SYMBOLS ▽=0 ▽=0 ▽=0	GENERAL TOLERANCES (UNLESS SPECIFIED)	DIMENSION STYLE		SCALE 4:1	DESIGN UNITS METRIC	THIRD ANGLE PROJECTION		
			mm	INCH					
			4 PLACES ± --- ± ---	3 PLACES ± --- ± .010				DRAWN BY GEP	DATE 1989/07/18
			2 PLACES ± 0.25 ± .015	1 PLACE ± 0.38 ± ---				CHECKED BY RJF	DATE 1989/07/18
ANGULAR ±1/2°		APPROVED BY FSMITH		DATE 2011/09/02	MATERIAL NO. MOLEX INCORPORATED				
DRAFT WHERE APPLICABLE MUST REMAIN WITHIN DIMENSIONS		SEE SHEET 4		DOCUMENT NO. SD-42475-***1			SHEET NO. 2 OF 4		
THIS DRAWING CONTAINS INFORMATION THAT IS PROPRIETARY TO MOLEX INCORPORATED AND SHOULD NOT BE USED WITHOUT WRITTEN PERMISSION									



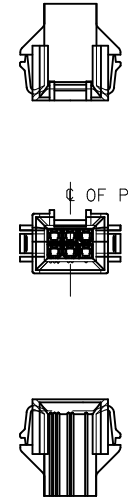
20 CIRCUIT



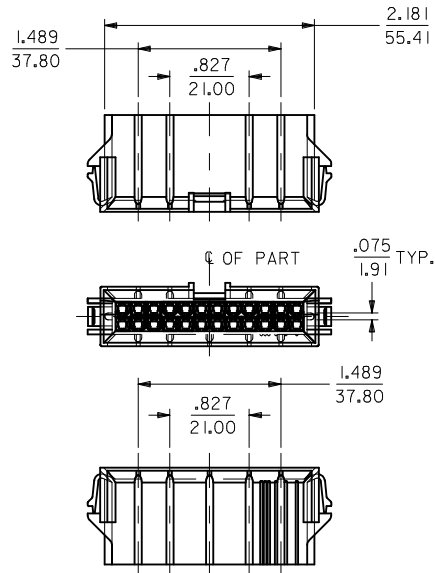
OR



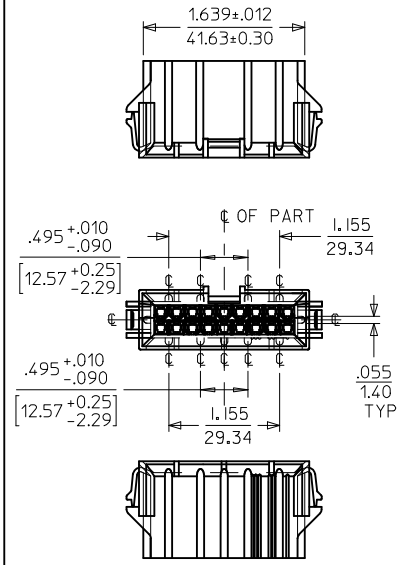
8 CIRCUIT



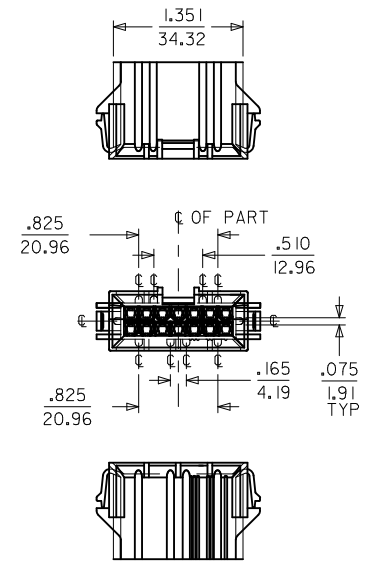
6 CIRCUIT



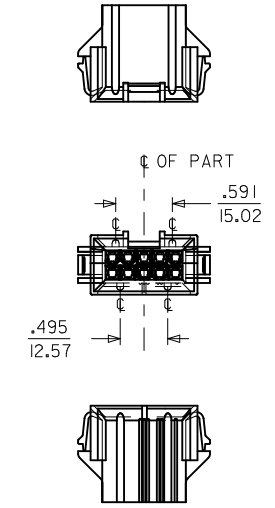
24 CIRCUIT



18 CIRCUIT



14 CIRCUIT



10 CIRCUIT

NOTES:

1) DIMENSIONS GIVEN ACROSS CENTERLINES ARE SYMMETRICAL ABOUT THOSE CENTERLINES WITHIN HALF THE TOTAL TOLERANCE.

SEE SHEET 1	QUALITY SYMBOLS
EC NO: UCP2011-3627	▽=0
DRW: NGUYEN	▽=0
CHKD: BELL	▽=0
APPR: FSMITH	
DATE: 2011/05/19	
DATE: 2011/09/02	
DESCRIPTION	
REV	

GENERAL TOLERANCES (UNLESS SPECIFIED)

	mm	INCH
4 PLACES ±	---	---
3 PLACES ±	---	±.010
2 PLACES ±	0.25	±.015
1 PLACE ±	0.38	---
ANGULAR ±1/2°		

DRAFT WHERE APPLICABLE MUST REMAIN WITHIN DIMENSIONS

DIMENSION STYLE IN/MM

DRAWN BY	DATE
GEP	1989/07/18
CHECKED BY	DATE
RJF	1989/07/18
APPROVED BY	DATE
FSMITH	2011/09/02

SCALE 1:1

DESIGN UNITS METRIC

THIRD ANGLE PROJECTION

PLUG HOUSING B.M.I.
2-24 CIRCUITS
MINI-FIT SERIES



MOLEX INCORPORATED

SEE SHEET 4

MATERIAL NO. SD-42475-***1

SHEET NO. 3 OF 4

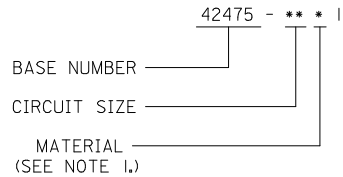
THIS DRAWING CONTAINS INFORMATION THAT IS PROPRIETARY TO MOLEX INCORPORATED AND SHOULD NOT BE USED WITHOUT WRITTEN PERMISSION

	13	12	11	10	9	8	7	6	5	4	3	2	1		
	PART NUMBER	ENG. NUMBER	CKT. SIZE	MATERIAL (SEE NOTE 1.)		PART NUMBER	CKT. SIZE	MATERIAL (SEE NOTE 1.)							
J	NOT TOOLED	42475-0211	2	1		NOT TOOLED	2	3		42475-***2I, 5558-GS*	42474-***2I, 5556-PBGS*P	94V-0	PHOS. BRZ.	GOLD	
	I5-06-0045	42475-0411	4	↑		42475-0431	4	↑		42475-***1I, 5558-GS*	42474-***1I, 5556-PBGS*P	94V-2			
	I5-06-0065	42475-0611	6			42475-0631	6			42475-***2I, 5558-GS*	42474-***2I, 5556-GS*P	94V-0	BRASS	GOLD	
	I5-06-0085	42475-0811	8			42475-0831	8			42475-***1I, 5558-GS*	42474-***1I, 5556-GS*P	94V-2			
I	I5-06-0105	42475-1011	10			42475-1031	10			42475-***2I, 5558-PBS*	42474-***2I, 5556-PBS*P	94V-0	PHOS. BRZ.	TIN	
	NOT TOOLED	42475-1211	12			NOT TOOLED	12			42475-***1I, 5558-PBS*	42474-***1I, 5556-PBS*P	94V-2			
	I5-06-0145	42475-1411	14			42475-1431	14			42475-***2I, 5558-S*	42474-***2I, 5556-S*P	94V-0	BRASS	TIN	
	NOT TOOLED	42475-1611	16			NOT TOOLED	16			42475-***1I, 5558-S*	42474-***1I, 5556-S*P	94V-2			
H	I5-06-0185	42475-1811	18			42475-1831	18			42475-***2I, 5558-GS*	A-42385-***D2	94V-0	PHOS. BRZ.	GOLD	
O	I5-06-0205	42475-2011	20			O 42475-2031	20			42475-***1I, 5558-GS*	A-42385-***C2	94V-2			
	NOT TOOLED	42475-2211	22	↓		NOT TOOLED	22	↓		42475-***2I, 5558-GS*	A-42385-***B2	94V-0	BRASS	GOLD	
	I5-06-0245	42475-2411	24	1		42475-2431	24	3		42475-***1I, 5558-GS*	A-42385-***A2	94V-2			
G										42475-***2I, 5558-GS*	A-42385-***D1	94V-0	PHOS. BRZ.	TIN	
	NOT TOOLED	42475-0221	2	2		NOT TOOLED	2	4		42475-***1I, 5558-GS*	A-42385-***C1	94V-2			
	I5-06-0046	42475-0421	4	↑		42475-0441	4	↑		42475-***2I, 5558-PBS*	A-42385-***D1	94V-0	PHOS. BRZ.	TIN	
	I5-06-0066	42475-0621	6			42475-0641	6			42475-***1I, 5558-PBS*	A-42385-***C1	94V-2			
F	50-36-2323	42475-0821	8			42475-0841	8			42475-***2I, 5558-S*	A-42385-***B1	94V-0	BRASS	TIN	
	I5-06-0106	42475-1021	10			42475-1041	10			42475-***1I, 5558-S*	A-42385-***A1	94V-2			
	NOT TOOLED	42475-1221	12			NOT TOOLED	12			PLUG HOUSING/ MALE TERMINAL				MATING CONNECTOR	
	I5-06-0146	42475-1421	14			42475-1441	14			HSG. MAT'L.		TERM. MAT'L.	PLATING		
E	NOT TOOLED	42475-1621	16			NOT TOOLED	16			MATING CONNECTOR FEATURES					
	I5-06-0186	42475-1821	18			42475-1841	18								
O	I5-06-0206	42475-2021	20			O 42475-2041	20								
	NOT TOOLED	42475-2221	22	↓		NOT TOOLED	22	↓							
D	I5-06-0246	42475-2421	24	2		42475-2441	24	4							

O = OBSOLETE

O = OBSOLETE

LEGEND:



SEE SHEET 1 EC NO: UCP2011-3627 2011/05/19 DRW: NGUYEN 2011/05/19 CHKD: BELL 2011/09/02 APPR: FSMITH	QUALITY SYMBOLS ▽=0 ▽=0 ▽=0	GENERAL TOLERANCES (UNLESS SPECIFIED)		DIMENSION STYLE IN/MM		SCALE 1:1	DESIGN UNITS METRIC	THIRD ANGLE PROJECTION		
		4 PLACES ± --- ± ---	INCH	DRAWN BY GEP	DATE 1989/07/18	PLUG HOUSING B.M.I. 2-24 CIRCUITS MINI-FIT SERIES				
		3 PLACES ± --- ± .010	CHECKED BY RJF	DATE 1989/07/18						
		2 PLACES ± 0.25 ± .015	APPROVED BY FSMITH	DATE 2011/09/02	MOLEX INCORPORATED		MATERIAL NO. SD-42475-***1	SHEET NO. 4 OF 4		
1 PLACE ± 0.38 ± ---		ANGULAR ±1/2°		SEE CHART		THIS DRAWING CONTAINS INFORMATION THAT IS PROPRIETARY TO MOLEX INCORPORATED AND SHOULD NOT BE USED WITHOUT WRITTEN PERMISSION				