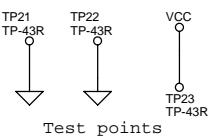


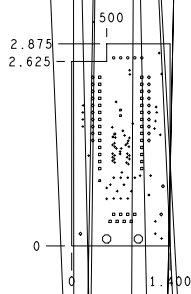
NOTE: RJ45 pinout assumes a straight-through connector will be used.



PCB: PDCR-9312 REV\*A  
PCA: 121R-31200 REV\*A

<b>CYPRESS SEMICONDUCTOR © 2005</b>		
Title CY8C24000 28 PDIP Module		
Size B	Document Number REF-13447	Rev **
Date: Monday, May 22, 2006	Sheet 1	of 1

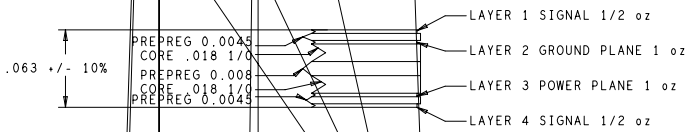
REVISIONS			
REV	DESCRIPTION	DATE	APPROVED
**	RELEASE FOR MANUFACTURING	03/20/06	DFK



DRILL CHART				
ALL UNITS ARE IN MILS				
FIGURE	SIZE	TOLERANCE	PLATED	QTY
*	10 0	±0.003	PLATED	65
*	20 0	0.003	PLATED	4
*	35 0	0.003	PLATED	36
*	40 0	0.003	PLATED	5
*	43 0	0.003	PLATED	23
○	128 0	0.003	NON-PLATED	2

NOTES: UNLESS OTHERWISE SPECIFIED

- MATERIAL:
  - EPOXY GLASS LAMINATE AND PREPREG TYPE FR-4
  - USE WHITE COPPER 1/2 oz. COPPER FOIL EXTERNAL LAYERS AND 1 oz. COPPER FOIL FOR INTERNAL LAYERS, UNLESS OTHERWISE SPECIFIED IN STACK VIEW.
  - OVERALL METAL TO METAL THICKNESS .063 +/- 10%
- DRILLING:
  - DIAMETERS IN DRILL TABLE ARE FINISHED HOLE SIZES +/- .003, UNLESS OTHERWISE SPECIFIED IN DRILL TABLE.
  - TEARDROP ALLOWED ON ENTRY OF VIA ON EVERY TRACE LAYER.
- PLATING:
  - COPPER PLATING IN THRU-HOLES .001 min.
- MARKING:
  - SILKSCREEN IN WHITE NON-CONDUCTIVE EPOXY INK ON PRIMARY SIDE OF THE BOARD OR BOTH SIDES IF APPLICABLE.
  - FABRICATOR TO ETCH DATE CODE AND LOGO ON SECONDARY SIDE.
- FINAL FABRICATION:
  - SOLDERMASK PRIMARY AND SECONDARY SIDE OF BOARD USING LIQUID PHOTOIMAGABLE MASK MATERIAL OVER BARE COPPER PER IPC SM-849. MASK NETWORKS PROVIDED ARE 1oz SOLDERMASK COLOR \*\*GREEN\*\*.
- WHEN REQUIRED, COPPER FINISH SHALL BE FINISHED (IN LEAD 60:40 MIN) HASL. \*QML RECOGNIZED VENDORS ONLY AND SHALL BE



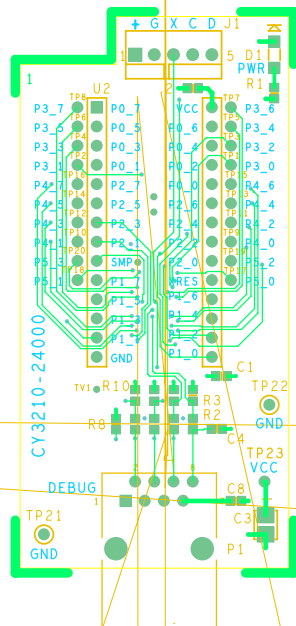
UNLESS OTHERWISE SPECIFIED	SIGNATURES	DATE
DIMENSIONS ARE IN INCHES	DRAWN ZMK	03/13/06
TOLERANCES UNLESS OTHERWISE SPECIFIED	CHECKED ECU	03/20/06
2 PL DECIMALS +/- .010	ENGRG DFK	03/20/06
3 PL DECIMALS +/- .005	ISSUED	
THIRD ANGLE PROJECTIONS		

12230 World Trade Drive #200  
 San Diego, CA 92128  
 (858) 613-7931  
**FABRICATION DRAWING**  
 CY3210-24000  
 POD MODULE DESIGN

9 MAXIMUM WRAP OR TWIST SHALL NOT EXCEED .010 INCH

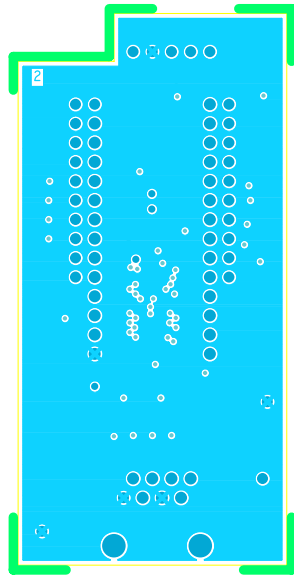
DO NOT DISCLOSE TO OR REPRODUCE FOR OTHERS EXCEPT AS AUTHORIZED BY CYPRESS.

SIZE	LEGEND	QWC NO	REV
			**
SCALE: 1/1		PDC 0312	SHEET: 1 OF 1

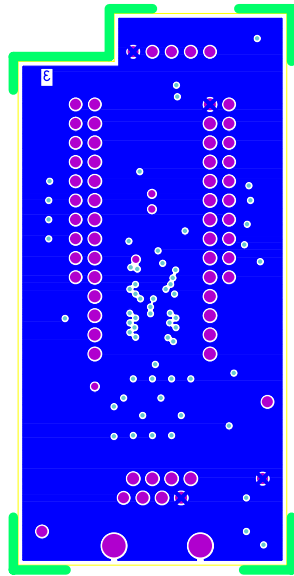


PDC-9312 REV \*\* PRIMARY SIDE

PDC-9312 REV \*\* PRIMARY SILKSCREEN



PDC-9312 REV\*\* LAYER 2 GND



PDC-9312 REV\*\* LAYER 3 VCC

