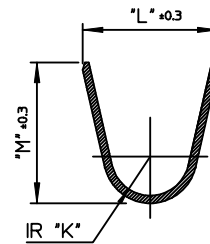
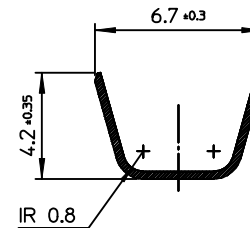


NOTES.

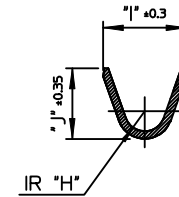
1. MATERIAL : Ⓞ BRASS, PRE-TIN PLATED
2. FINISH : 0.8~1.8µm,Tin(Sn) plating overall
0.3~0.8µm.Copper(Cu) plating
3. PRODUCT SPECIFICATION : PS-35127-001
4. MATED TERMINAL : 35028 SERIES



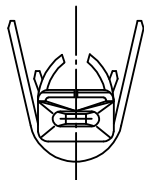
SECTION A-A



SECTION A-A
(35040-9502)



SECTION B-B



H	I	J	K	L	M	MATERIAL NO.	ENG NO.
0.8	3.0	3.2	0.8	3.35	3.55	350409802	35040-9802
0.8	3.2	3.5	1.55	5.4	5.3	350409000	35040-9000
0.8	4.3	3.2				350409502	35040-9502

REVISED EC NO: KOR2009-0151 DRWN: JHPARK01 2009/05/18 CHKD: W. YANG 2009/06/18 APPR: YUNSIKKIM 2009/07/01	DESCRIPTION REV	QUALITY SYMBOLS	GENERAL TOLERANCES (UNLESS SPECIFIED)	DIMENSION STYLE	SCALE	DESIGN UNITS	THIRD ANGLE PROJECTION	
		▼=0 ▽=0	mm INCH 4 PLACES ± --- ± --- 3 PLACES ± --- ± --- 2 PLACES ± 0.2 ± --- 1 PLACE ± 0.3 ± --- ANGULAR ± 1 °	MM ONLY	5:1	METRIC		
			DRAFT WHERE APPLICABLE MUST REMAIN WITHIN DIMENSIONS	DRAWN BY DATE YJ.KIM 1992/08/29 CHECKED BY DATE BK.CHOI 1992/08/29 APPROVED BY DATE CW.LEE 1992/08/29	TITLE	.070 MALE TERMINAL		
				MATERIAL NO. SEE TABLE DOCUMENT NO. SD-35040-001 SHEET NO. 1 OF 01	MOLEX INCORPORATED THIS DRAWING CONTAINS INFORMATION THAT IS PROPRIETARY TO MOLEX INCORPORATED AND SHOULD NOT BE USED WITHOUT WRITTEN PERMISSION			