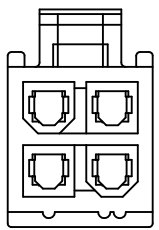
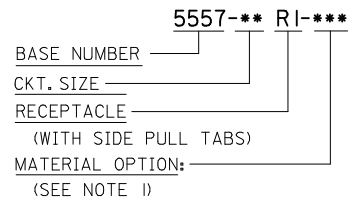
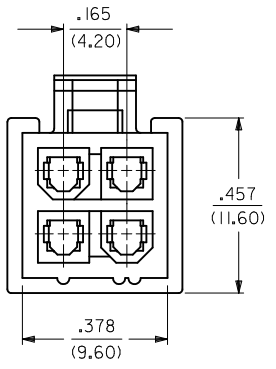
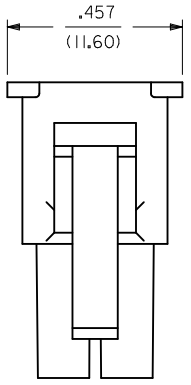


PART NUMBER	ENG. NUMBER	MATERIAL (SEE NOTE 1)
39-01-3028	5557-02R1-210	94V-0
39-01-3048	5557-04R1-210	94V-0
39-01-3022	5557-02R1	94V-2
39-01-3042	5557-04R1	94V-2
15-04-6021	5557-02R1-220	94V-2, U.V. STABLE
46999-0273	5557-04R1-220	94V-2, U.V. STABLE
39-01-6026	5557-02R1-BL	94V-2, BLACK
NO E.D.P.	5557-04R1-BL	94V-2, BLACK

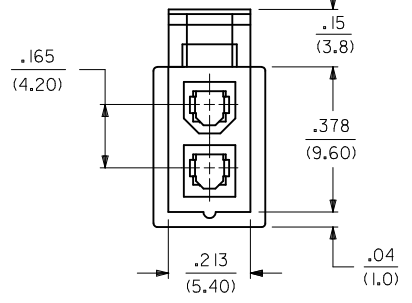
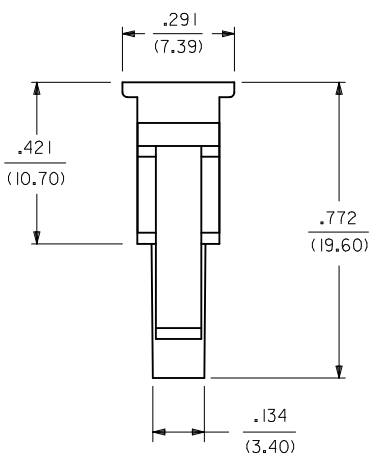
**LEGEND:**



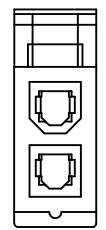
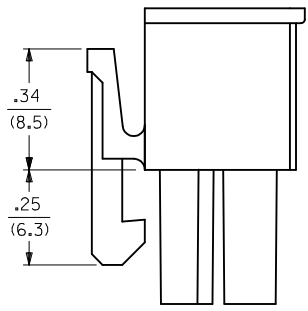
**5557-04R-00**  
 (WITHOUT SIDE PULL TABS)  
 (SHOWN FOR REFERENCE ONLY)



**5557-04R1-00**



**5557-02R1-00**



**5557-02R-00**  
 (WITHOUT SIDE PULL TABS)  
 (SHOWN FOR REFERENCE ONLY)

- NOTES:**
- MATERIAL:  
 "BLANK" = NYLON 6/6, U.L. 94V-2. COLOR: NATURAL.  
 "210" = NYLON 6/6, U.L. 94V-0. COLOR: NATURAL.  
 "220" = NYLON 6/6, U.L. 94V-2, U.V. STABILIZED. COLOR: BLACK.  
 "BL" = NYLON 6/6, U.L. 94V-2. COLOR: BLACK.
  - FINISH: NOT APPLICABLE
  - PRODUCT SPECIFICATION: PS-5556-001.
  - PARTS TO BE PACKAGED PER PK-5557-002
  - PART MATES WITH MOLEX PLUG #5559.
  - PART IS FOR USE WITH MOLEX FEMALE TERMINAL #5556.
  - PART IS NOT DESIGNED FOR CURRENT SHARING.
  - CONNECTORS ARE NOT TO BE MATED OR UNMATED WHILE CIRCUITS ARE LIVE.
  - WIRES ARE TO BE DRESSED IN SUCH A MANNER TO ALLOW THE TERMINALS TO FLOAT FREELY IN THE POCKET.
  - PART CONFORMS TO CLASS "B" REQUIREMENTS OF COSMETIC SPECIFICATION PS-45499-002

ADD -04R1-220 EC NO: UCP2012-1769 DRW: NGUYEN 2011/12/01 CHKD: BELL 2011/12/01 APPR: F. SMITH 2011/12/05 G2	QUALITY SYMBOLS	GENERAL TOLERANCES (UNLESS SPECIFIED)	DIMENSION STYLE	SCALE	DESIGN UNITS	THIRD ANGLE PROJECTION
	▽=0	mm INCH	IN/MM	1:1	INCH	
	▽=0	4 PLACES ± --- ± ---	DRAWN BY DATE	TITLE		
	▽=0	3 PLACES ± --- ± ---	GEP 1990/08/08	2 & 4 CKT. RECEPTACLE, MINI-FIT JR. SERIES		
	2 PLACES ± --- ± ---	CHECKED BY DATE	MOLEX MOLEX INCORPORATED			
	1 PLACE ± --- ± ---	RJF	SD-5557-***R1-*			
	ANGULAR ±1/2°	APPROVED BY DATE	SHEET NO. 1 OF 1			
	DRAFT WHERE APPLICABLE MUST REMAIN WITHIN DIMENSIONS	MATERIAL NO. SEE CHART	THIS DRAWING CONTAINS INFORMATION THAT IS PROPRIETARY TO MOLEX INCORPORATED AND SHOULD NOT BE USED WITHOUT WRITTEN PERMISSION			