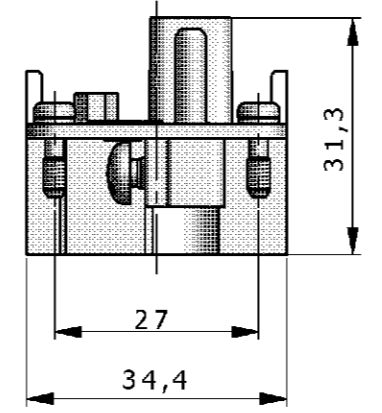
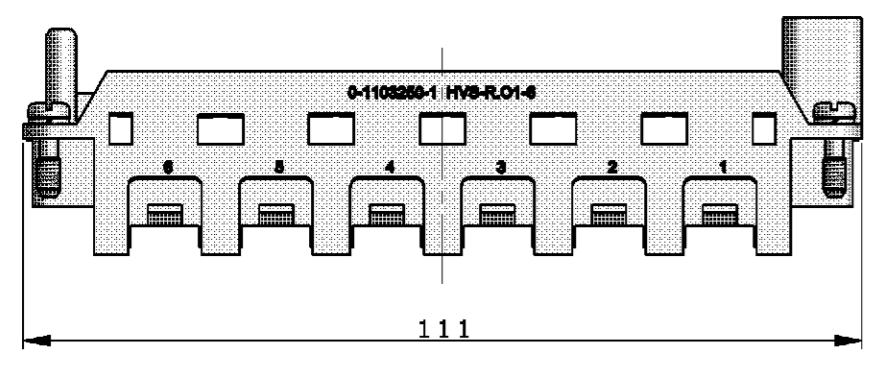
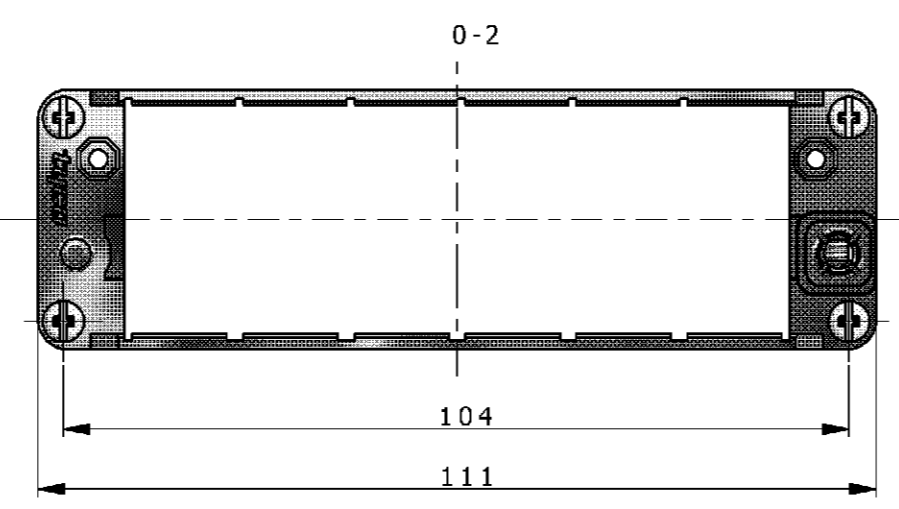
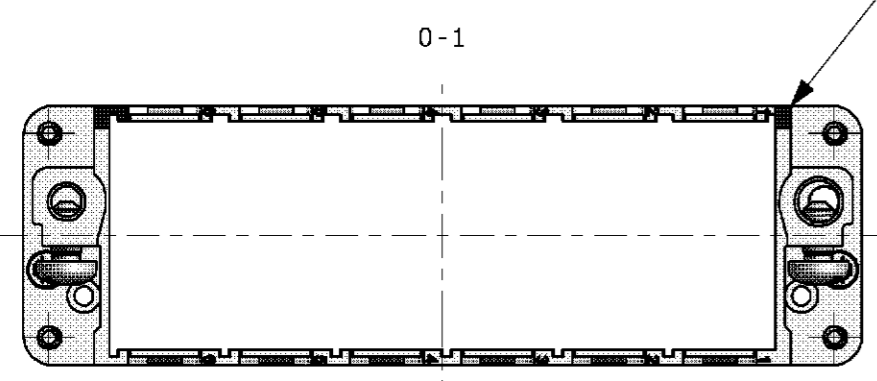
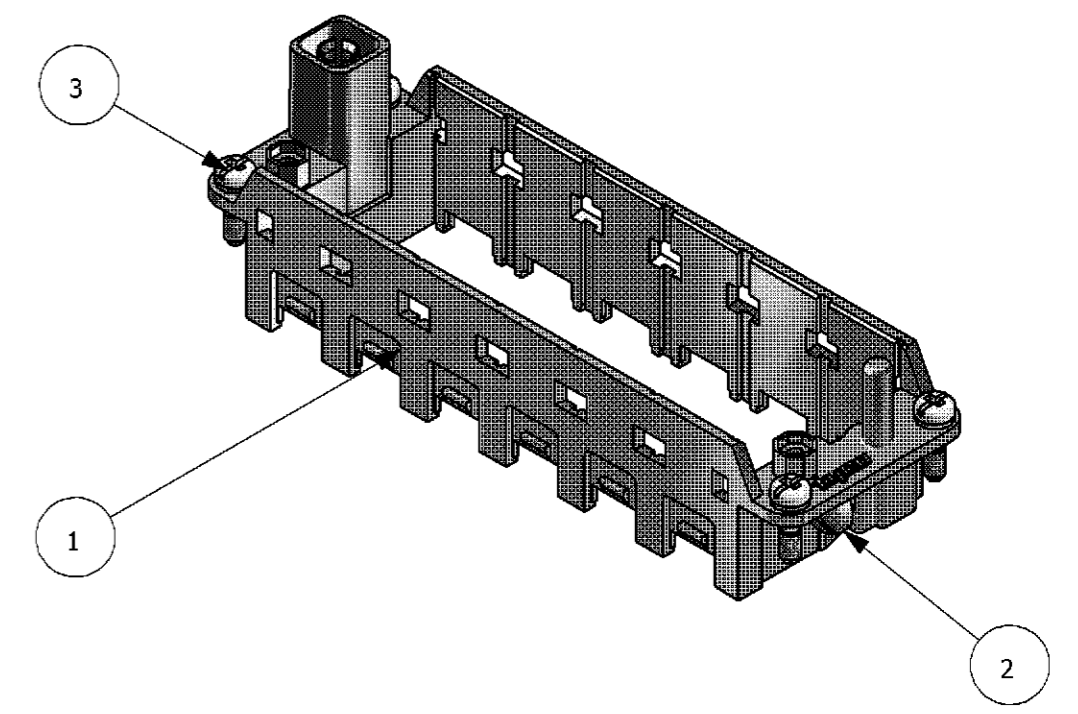
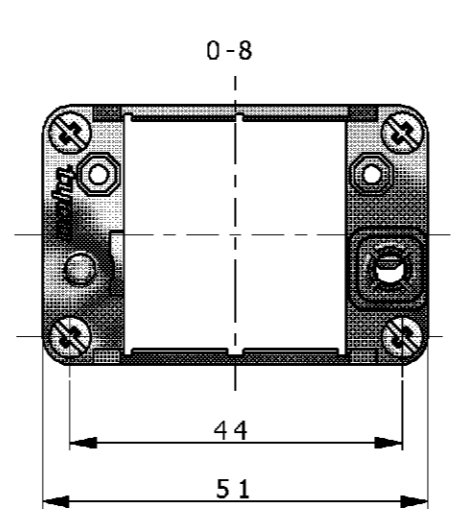
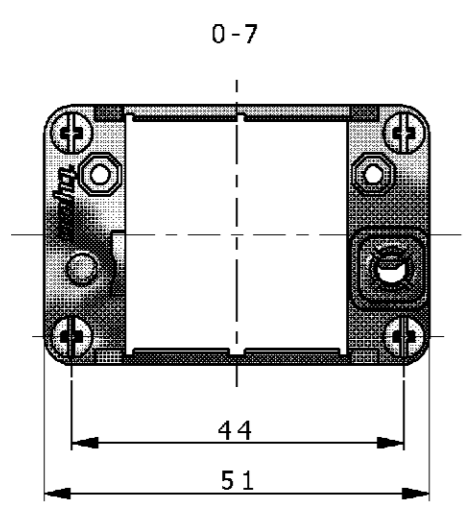
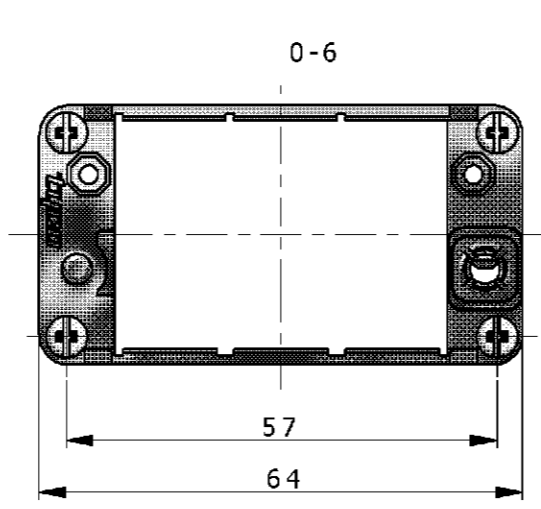
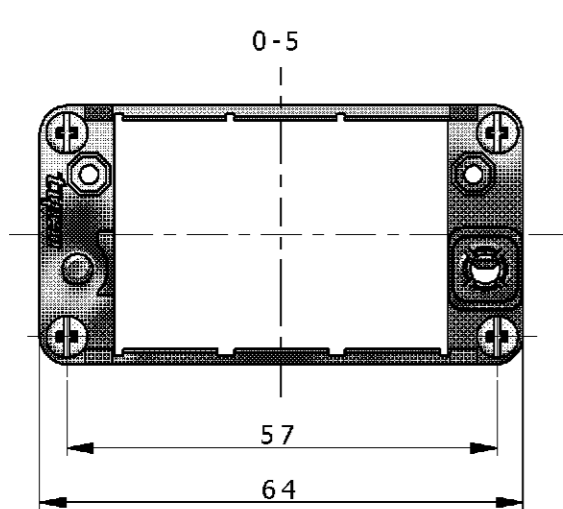
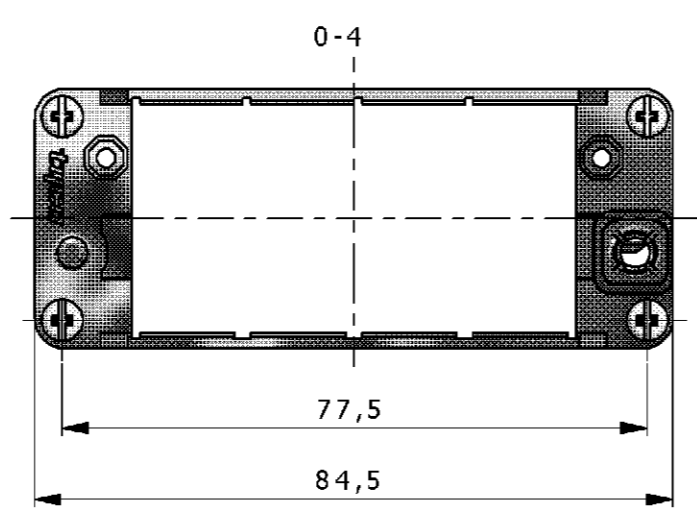
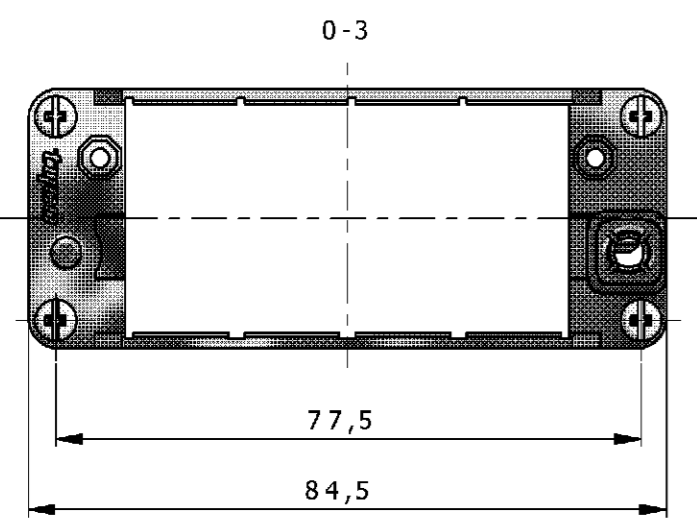


| LOC                      | DIST | REVISIONS<br>ÄNDERUNGEN |     |                             |            |     |      |
|--------------------------|------|-------------------------|-----|-----------------------------|------------|-----|------|
| AI                       | -    | P                       | LTR | DESCRIPTION<br>BESCHREIBUNG | DATE       | DWN | APVD |
| PROJEKT NR.<br>EGGM04410 | A1   |                         |     | NEW DRAWN                   | 17.02.2006 | SR  | BR   |



### NOTES

- MODUL INSERT: SERIES HVS  
CATALOG: 889745
- SUITABLE HOOD SIZE 3 TO 8: SERIES HB; HD; EMV; HF AND HIP  
CATALOG: 889745
- MARKING OF POLARIZATION ACCORDING MARKING OF  
MODULE INSERTS
- PACKAGING:  
10 SETS IN A CARTON, PRE MOUNTED



| QTY. | DESCRIPTION    | MATERIAL | SURFACE       | COLOR | NOTE          | ITEM |
|------|----------------|----------|---------------|-------|---------------|------|
| 4    | FIXING SCREW   | STEEL    | NICKEL PLATED | BLUE  | M3X10,5       | 3    |
| 2    | PAN HEAD SCREW | STEEL    | NICKEL PLATED | ---   | M4*8          | 2    |
| 1    | FRAME          | ZINC     | NICKEL PLATED | ----  | FOR 6 INSERTS | 1    |

#### PARTS LIST

|   |  |  |   |   |
|---|--|--|---|---|
| <small>THIS DRAWING IS A CONTROLLED DOCUMENT FOR AMP INCORPORATED. IT IS SUBJECT TO CHANGE AND THE CONTROLLING ENGINEERING ORGANIZATION SHOULD BE CONTACTED FOR THE LATEST REVISION. DIESSES ZEICHNUNGSDOKUMENT WIRD DURCH AMP INCORPORATED KONTROLLIERT. ÄNDERUNGEN, DIE DEM TECHNISCHEN FORTSCHRITT ÜBEREN, SIND VORZUHALTEN. DEN JEDER LETZTQUALITÄTIGEN ÄNDERUNGSSTAND BEZIEHEND SICH AUF ANFANG.</small> |  | DWN<br>SCHNEIDER<br>16.02.2006                                       | Tyco / Electronics AMP GmbH<br>D - 53819 Neunkirchen                    |   |
| <small>TOLERANCES UNLESS OTHERWISE SPECIFIED:<br/>ALLGEMEIN TOLERANZEN</small>  |  | CHK<br>H.BRAUN<br>17.02.2006   | <small>NAME</small><br><b>ASSY MODULE FRAME</b><br>SERIES HVS, SIZE 1-4 |   |
| <small>DIMENSIONS:<br/>DIMENSIONEN:<br/>mm</small>  |  | APVD<br>T.SCHNURPFEL<br>17.02.2006                                   | <small>SIZE</small><br><b>A2</b>  |   |
| <small>PRODUCT SPEC.<br/>PRODUKTSPEZ.</small><br>108-74075  |  | <small>APPLICATION SPEC.<br/>VERARBEITUNGSSPEZ.</small><br>114-74080 |   |   |
| <small>MATERIAL</small>   |  | <small>WEIGHT<br/>GEWICHT</small><br>0,001 KG                        | <small>CAGE CODE</small><br>00779                                       | <small>DRAWING NO.<br/>ZEICHNUNGS-NR.</small><br><b>1103250</b> |
| <small>FINISH / OBERFLÄCHE / FARBE</small>  |  | <small>RESTRICTED TO<br/>NUR FÜR</small>                             |   |   |
| <small>FINISH / OBERFLÄCHE / FARBE</small>  |  | <small>CUSTOMER DRAWING / KUNDENZEICHNUNG</small>                    |   |   |
| <small>SCALE<br/>MASSSTAB</small> 1:1   |  | <small>SHEET<br/>BLATT</small> 1 OF 1                                |   |   |
| <small>REV.</small> A1  |  | <small>REV.</small> A1   |   |   |