

INSTALLATION INSTRUCTIONS

These Speaker brackets are supplied fully assembled and it is NOT recommended to dismantle them before fixing.

Loosen the 2 clamp screws securing part (B) to part (C) to allow free movement of the Ball Joint.

Pre-drill 4 small holes in the rear or side of the Speaker using part (B) as a template.

Screw triangular shape bracket (A) to wall using long screws and red wall plugs provided.

* For stud or partition walling fix the bracket to the stud, otherwise special fixings will be necessary.

4. Screw rectangular shape bracket (B) to Speaker rear or side using self tapping screws provided. A small "Stubby" type screwdriver is recommended as access is limited.

For P.A. Speakers with thread inserts simply use the slots provided.

5. Finally adjust Speaker to desired angle and tighten the 2 clamp screws until the Speaker is held in place.

DO NOT OVERTIGHTEN.

N.B. Slot centres 60-68mm.

BTECH



BALL JOINT MULTI-ANGLE SPEAKER BRACKETS (2)

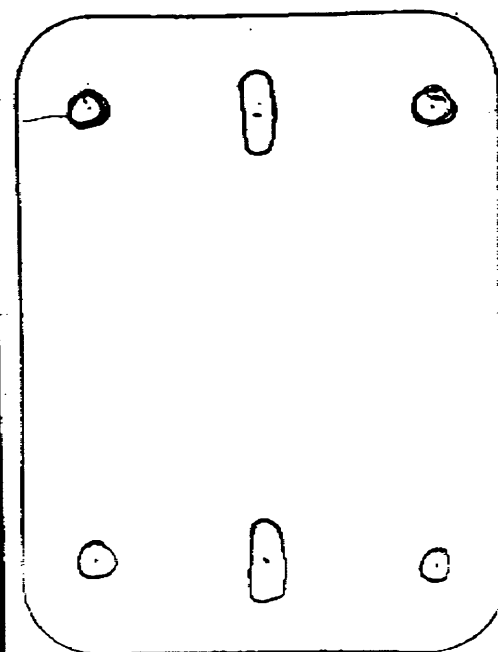
- ADJUSTS IN ALL DIRECTIONS
- SUITABLE FOR MOST SMALL & MEDIUM SPEAKERS
- MAXIMUM SPEAKER WEIGHT 5KG
- SLOTS FOR P.A. SPEAKERS WITH THREAD INSERTS
- WALL OR CEILING MOUNTING



BALL JOINT MULTI-ANGLE SPEAKER BRACKETS (2)

- ORIENTABLE DANS TOUTES LES DIRECTIONS
- CONVENANT A LA PLUPART DES HAUT-PARLEURS DE PETITE OU MOYENNE TAILLE
- POIDS MAXIMUM DU HAUT-PARLEUR 5 KG
- FENTE POUR INSERTION DE HAUT-PARLEURS PUBLICS AVEC INSERTION PAR VIS
- FIXATION AU MUR OU AU PLAFOND

THIS PACK CONTAINS 2
BT6 BALL JOINT SPEAKER BRACKETS
PLUS SCREWS & WALL PLUGS



124-208

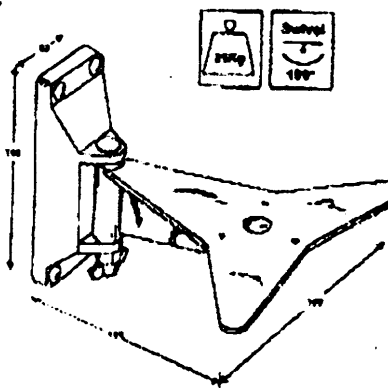
STB76/8 bundle
WURZ

BT4

724-200

Classic platform style wall bracket.

- Strong and effective.
- Suitable for domestic or P.A.
- Supports Speakers up to 25Kg (55lbs).
- Swivels left or right.
- Speakers over 5Kg or more than 15" high, use 2 per speaker (1 top, 1 bottom).

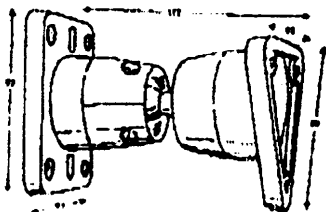
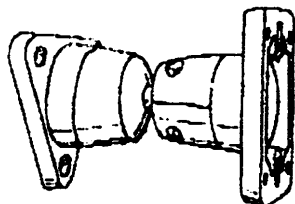


BT6



Ball-Joint loudspeaker bracket.

- Fully adjustable through 360°.
- Ideal for "Cinema Sound", P.A. etc.
- Wall or ceiling mountable.
- Holds up to 5Kg (13lbs).
- Available in black or white.
- Slots provided for P.A. Speakers with threaded inserts.



BT6(P) As BT6 plus M6 allen screws to fit Panasonic and other speakers with metric M6 inserts.

BT6(U) As BT6 plus UNC 1/4" allen screws to fit USA style speakers fitted with UNC inserts.

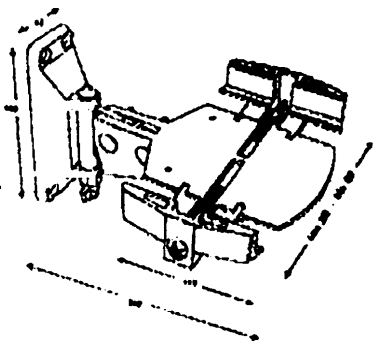
BT6(S) As BT6 plus M5 allen screws to fit Sony and other speakers with metric M5 inserts.

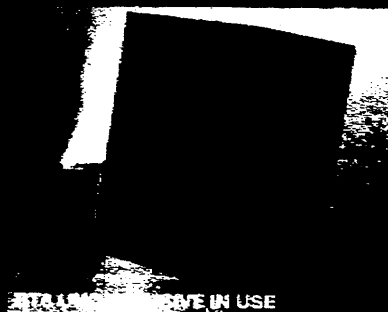
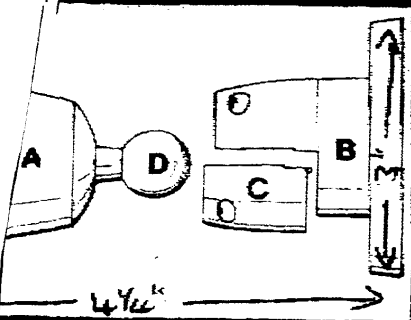
BT7

Ultragrip™ loudspeaker wall mount.

Especially designed for curved front loudspeakers, but ideal for all small to medium speakers.

- Clamps speakers at the side using ultragrip high friction pads.
- Swivels left or right, tilts 15° down or 5° up.
- Loudspeaker specifications: Width 127mm - 222mm (5" - 8 7/8") Max length 254mm (10") Max Weight 7kg. (15lbs).
- Colour: black.





INSTALLATION IN USE

INSTALLATION INSTRUCTIONS

Speaker brackets are supplied fully assembled and it is NOT recommended to disassemble them before fixing.

Loosen the 2 clamp screws securing part (B) to part (C) to allow free movement of the Ball Joint.

Pre-drill 4 small holes in the rear or side of the Speaker using part (B) as a template.

Screw triangular shape bracket (A) to wall using long screws and red wall plugs provided.

* For stud or partition walling fix the bracket to the stud, otherwise special fixings will be necessary.

4. Screw rectangular shape bracket (B) to Speaker rear or side using self tapping screws provided. A small "Stubby" type screwdriver is recommended as access is limited.

For P.A. Speakers with thread inserts simply use the slots provided.

5. Finally adjust Speaker to desired angle and tighten the 2 clamp screws until the Speaker is held in place.

DO NOT OVERTIGHTEN.

N.B. Slot centres 60-68mm.

B-TECH



BALL JOINT MULTI-ANGLE SPEAKER BRACKETS (2)

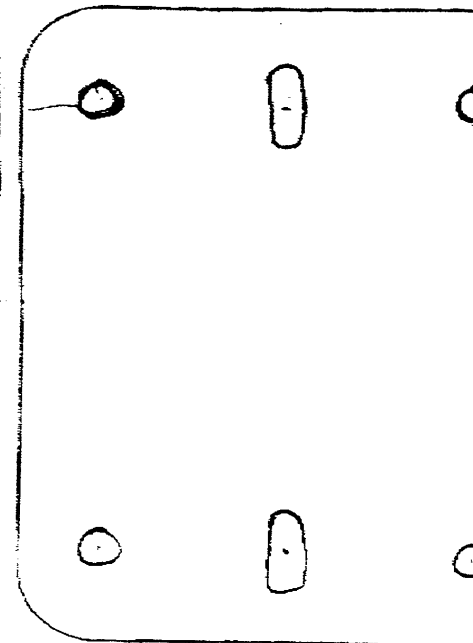
- ADJUSTS IN ALL DIRECTIONS
- SUITABLE FOR MOST SMALL & MEDIUM SPEAKERS
- MAXIMUM SPEAKER WEIGHT 5KG
- SLOTS FOR P.A. SPEAKERS WITH THREAD INSERTS
- WALL OR CEILING MOUNTING



BALL JOINT MULTI-ANGLE SPEAKER BRACKETS (2)

- ORIENTABLE DANS TOUTES LES DIRECTIONS
- CONVENANT A LA PLUPART DES HAUT-PARLEURS DE PETITE OU MOYENNE TAILLE
- POIDS MAXIMUM DU HAUT-PARLEUR 5 KG
- FENTE POUR INSERTION DE HAUT-PARLEURS PUBLICS AVEC INSERTION PAR VIS
- FIXATION AU MUR OU AU PLAFOND

THIS PACK CONTAINS 2
BT6 BALL JOINT SPEAKER BRACKETS
PLUS SCREWS & WALL PLUGS



1.24-208