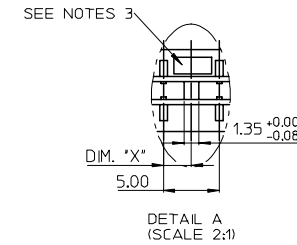
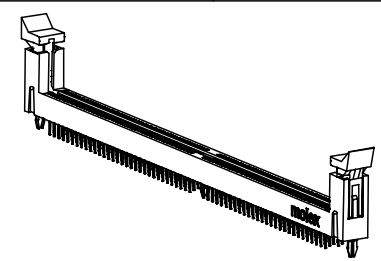
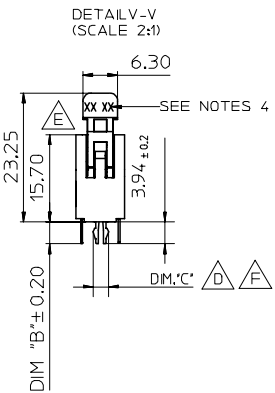
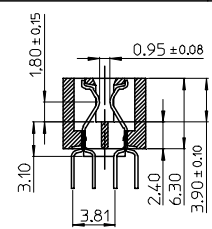


RECOMMENDED PCB LAYOUT  
CONNECTOR SIDE



KEY LOCATION	VOLTAGE	DIM.'X'
LEFT	2.5V	1.50
CENTER	1.8V	2.50

- NOTES:
- MATERIAL:  
HOUSING: SEE TABLE ,GLASS FIBER FILLED UL94V-0,COLOR:SEE TABLE.  
LATCH: POLYAMIDE, GLASS FIBER FILLED UL94V-0. COLOR : SEE TABLE.  
FORKLOCK: BRASS  
TERMINAL: SEE TABLE.
  - PLATING:  
TERMINAL  
CONTACT AREA: SEE TABLE.  
SOLDER TAIL: 100 MICRONCH MIN. TIN.  
UNDER PLATING: NICKEL OVERALL.
  - FORKLOCK  
SOLDER AREA: 100 MICRONCH MIN. TIN.  
UNDER PLATING: NICKEL OVERALL.
  - VOLTAGE: SEE TABLE
  - DATE CODE:XXXXYYWW
  - PRODUCT SPECIFICATION REFER TO PS-87705-801.
  - PACKAGING SPECIFICATION REFER TO PK-87705-801.
  - TEST SUMMARY:REFER TO TS-87705-801.
  - LEAD FREE AND ROHS COMPLIANT PRODUCT.

REV	DESCRIPTION	QUALITY SYMBOLS	GENERAL TOLERANCES (UNLESS SPECIFIED)		DIMENSION STYLE		SCALE	DESIGN UNITS	THIRD ANGLE PROJECTION	
			mm	INCH	MM ONLY	1:1	METRIC	⊙	□	
PER EWR2007-0102			4 PLACES	± ---	± ---	DRAWN BY	DATE	TITLE		
EC NO: SH2007-0496			3 PLACES	± ---	± ---	TOM	2004/07/19	1.0MM PITCH DDR II		
DRWN:ALL IN	2007/03/20		2 PLACES	± 0.25	± ---	CHECKED BY	DATE	240 CKTS WITH FORKLOCK		
CHKD:	2007/03/21		1 PLACE	± 0.25	± ---	ALL IN	2004/07/19	MOLEX INCORPORATED		
APPR:WWSCHANG	2007/03/22		ANGULAR ± 3 °			APPROVED BY	DATE	MATERIAL NO.		SHEET NO.
			DRAFT WHERE APPLICABLE MUST REMAIN WITHIN DIMENSIONS			WWSCHANG	2004/07/19	SEE TABLE		1 OF 10
						MATERIAL NO.	DOCUMENT NO.	SD-87705-801		
						SIZE	THIS DRAWING CONTAINS INFORMATION THAT IS PROPRIETARY TO MOLEX INCORPORATED AND SHOULD NOT BE USED WITHOUT WRITTEN PERMISSION			

7 6 5 4 3 2 1

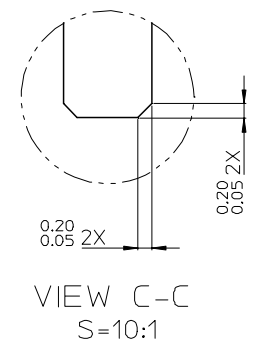
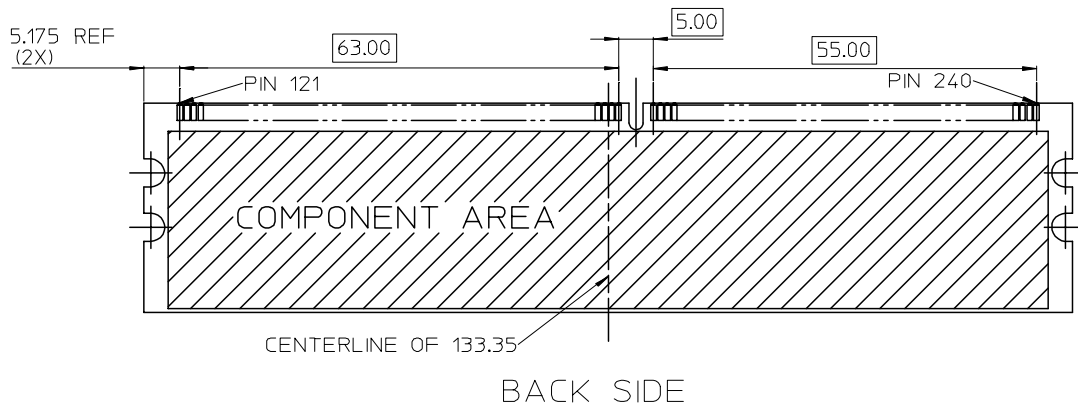
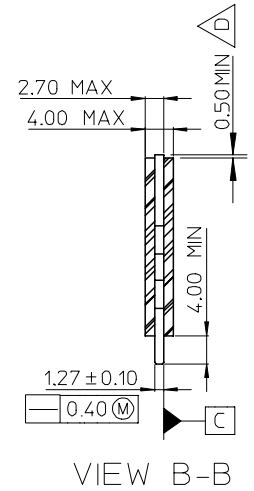
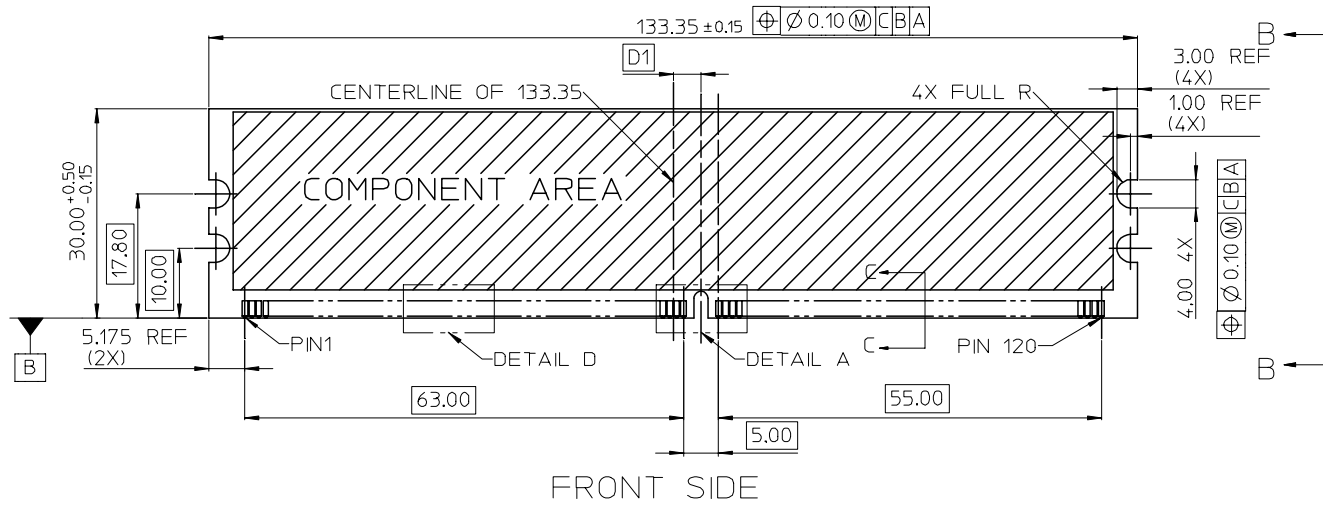
E  
D  
C  
B  
A

E  
D  
C  
B  
A

MOLEX P/N	HOUSING MATERIAL	HOUSING COLOR	LATCH COLOR	TERMINAL MATERIAL	CONTACT PLATING	SOLDERTAIL LENGTH "B"	FORKLOCK WIDTH "C"	VOLTAGE
87705-7900	NYLON66	BLACK	WHITE	PHOSPHOR BROZNE	GOLD FLASH	2.54	2.55±0.05	1.8
87705-7901					15 MICROINCH GOLD			
87705-7902					30 MICROINCH GOLD			
87705-7903	NYLON46	BLACK	WHITE	PHOSPHOR BROZNE	GOLD FLASH	2.54	2.55±0.05	1.8
87705-7904					15 MICROINCH GOLD			
87705-7905					30 MICROINCH GOLD			
87705-7008	NYLON66	BLACK	WHITE	PHOSPHOR BROZNE	15 MICROINCH GOLD	3.18	2.70 <sup>+0.10</sup> <sub>-0.05</sub>	1.8
87705-7028		BLUE (287U)						
87705-7058		BLACK	BLACK					
87705-7408	NYLON46	BLACK	WHITE	PHOSPHOR BROZNE	15 MICROINCH GOLD	3.18	2.70 <sup>+0.10</sup> <sub>-0.05</sub>	1.8
87705-7428		BLUE (287U)						
87705-7458		BLACK	BLACK					

SEE SHEET 1 EC NO: SH2007-0496 TDRWN: ALL IN 2007/03/20 CHKD: 2007/03/21 APPR: WWSCHANG 2007/03/22	DESCRIPTION REV	QUALITY SYMBOLS	GENERAL TOLERANCES (UNLESS SPECIFIED)		DIMENSION STYLE		SCALE	DESIGN UNITS	THIRD ANGLE PROJECTION		
		= 0	mm	INCH	MM ONLY		1:1	METRIC			
		= 0	4 PLACES ± ---	± ---	DRAWN BY	DATE	TITLE				
			3 PLACES ± ---	± ---	TOM	2004/07/19	1.0MM PITCH DDR II				
			2 PLACES ± 0.25	± ---	CHECKED BY	DATE	240 CKTS WITH FORKLOCK				
	1 PLACE ± 0.25	± ---	ALL IN	2004/07/19	APPROVED BY		DATE	MOLEX INCORPORATED			
	ANGULAR ± 3 °		WWSCHANG	2004/07/19	MATERIAL NO.		DOCUMENT NO.	SHEET NO.			
			DRAFT WHERE APPLICABLE MUST REMAIN WITHIN DIMENSIONS		SEE TABLE		SD-87705-801		10 OF 10		
			SIZE	THIS DRAWING CONTAINS INFORMATION THAT IS PROPRIETARY TO MOLEX INCORPORATED AND SHOULD NOT BE USED WITHOUT WRITTEN PERMISSION							

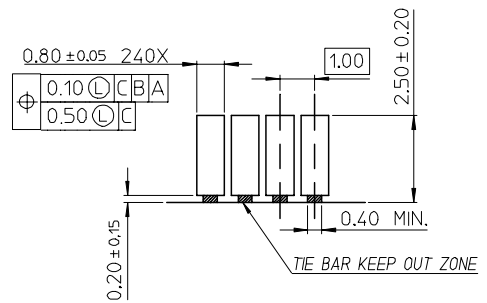
6 5 4 3 2 1



SEE SHEET 1 EC NO: SH2007-0496 TDRWN: ALL IN 2007/03/20 CHKD: 2007/03/21 APPR: WWSCHANG 2007/03/22	DESCRIPTION REV	QUALITY SYMBOLS	GENERAL TOLERANCES (UNLESS SPECIFIED)		DIMENSION STYLE MM ONLY		SCALE 1:1	DESIGN UNITS METRIC	THIRD ANGLE PROJECTION		
		$\nabla = 0$ $\nabla C = 0$	mm	INCH	DRAWN BY TOM	DATE 2004/07/19	TITLE 1.0MM PITCH DDR II 240 CKTS WITH FORKLICK				
		4 PLACES ± --- ± ---	3 PLACES ± --- ± ---	2 PLACES ± 0.25 ± ---	1 PLACE ± 0.25 ± ---	CHECKED BY ALL IN	DATE 2004/07/19	APPROVED BY DATE WWSCHANG 2004/07/19			
		ANGULAR ± 3 °		DRAFT WHERE APPLICABLE MUST REMAIN WITHIN DIMENSIONS		MATERIAL NO. SEE TABLE	DOCUMENT NO. SD-87705-801	SHEET NO. 2 OF 10		MOLEX INCORPORATED	
		SIZE A 4		THIS DRAWING CONTAINS INFORMATION THAT IS PROPRIETARY TO MOLEX INCORPORATED AND SHOULD NOT BE USED WITHOUT WRITTEN PERMISSION							

7 6 5 4 3 2 1

E

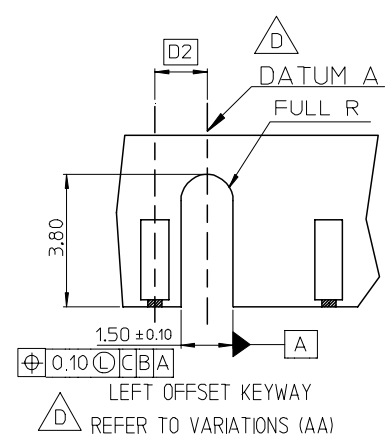


DETAIL D

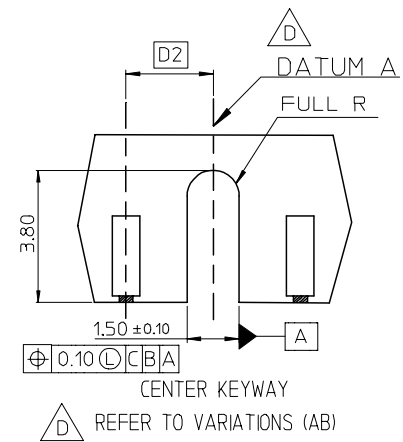
△ D VARIATIONS

VAR SYMBOL	AA	AB	AC
D1	3.00 BASIC	4.00 BASIC	5.00 BASIC
D2	1.50 BASIC	2.50 BASIC	3.50 BASIC

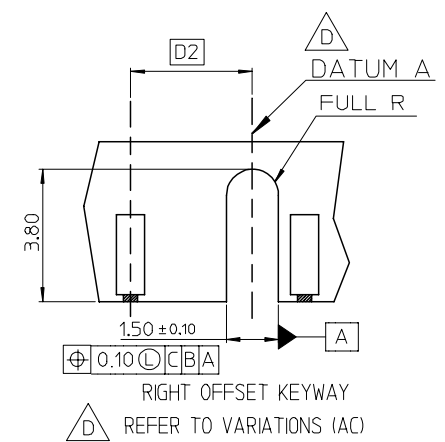
D



LEFT OFFSET KEYWAY  
△ D REFER TO VARIATIONS (AA)



CENTER KEYWAY  
△ D REFER TO VARIATIONS (AB)



RIGHT OFFSET KEYWAY  
△ D REFER TO VARIATIONS (AC)



DETAIL A S=5:1  
CENTER KEY ZONE


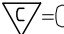

THIS DESIGN IS BASED ON DESIGN OBJECTIVES AND IS STRICTLY TENTATIVE. IT MAY CHANGE BASED ON RESULTS OF ADDITIONS DESIGN REVIEWS AND VERIFICATIONS.

A

SEE SHEET 1 EC NO: SH2007-0496 TDRWN: ALL IN 2007/03/20 CHKD: 2007/03/21 APPR: WWSCHANG 2007/03/22	QUALITY SYMBOLS	GENERAL TOLERANCES (UNLESS SPECIFIED)	DIMENSION STYLE	SCALE	DESIGN UNITS	THIRD ANGLE PROJECTION															
	▽ = 0 ∇ = 0	<table border="1"> <thead> <tr> <th></th> <th>mm</th> <th>INCH</th> </tr> </thead> <tbody> <tr> <td>4 PLACES</td> <td>± ---</td> <td>± ---</td> </tr> <tr> <td>3 PLACES</td> <td>± ---</td> <td>± ---</td> </tr> <tr> <td>2 PLACES</td> <td>± 0.25</td> <td>± ---</td> </tr> <tr> <td>1 PLACE</td> <td>± 0.25</td> <td>± ---</td> </tr> </tbody> </table>		mm	INCH	4 PLACES	± ---	± ---	3 PLACES	± ---	± ---	2 PLACES	± 0.25	± ---	1 PLACE	± 0.25	± ---	MM ONLY		METRIC	
		mm	INCH																		
	4 PLACES	± ---	± ---																		
	3 PLACES	± ---	± ---																		
2 PLACES	± 0.25	± ---																			
1 PLACE	± 0.25	± ---																			
	ANGULAR ± 3 °	DRAWN BY	DATE	TITLE																	
	DRAFT WHERE APPLICABLE MUST REMAIN WITHIN DIMENSIONS	TOM	2004/07/19	1.0MM PITCH DDR II 240 CKTS WITH FORKLOCK																	
		CHECKED BY	DATE	MOLEX MOLEX INCORPORATED																	
		ALL IN	2004/07/19	DOCUMENT NO. SD-87705-801																	
		APPROVED BY	DATE	SHEET NO. 3 OF 10																	
		WWSCHANG	2004/07/19	THIS DRAWING CONTAINS INFORMATION THAT IS PROPRIETARY TO MOLEX INCORPORATED AND SHOULD NOT BE USED WITHOUT WRITTEN PERMISSION																	

6 5 4 3 2 1





7	6	5	4	3	2	1		
MOLEX P/N	HOUSING MATERIAL	HOUSING COLOR	LATCH COLOR	TERMINAL MATERIAL	CONTACT PLATING	SOLDERTAIL LENGTH "B"	FORKLOCK WIDTH "C"	VOLTAGE
87705-7000	NYLON66	BLACK	WHITE	PHOSPHOR BROZNE	GOLD FLASH	2.54	  2.70 <sup>+0.10</sup> <sub>-0.05</sub>	1.8
87705-7001					10 MICROINCH GOLD			
87705-7002					15 MICROINCH GOLD			
87705-7003					GOLD FLASH			
87705-7004					10 MICROINCH GOLD			
87705-7005					15 MICROINCH GOLD			
87705-7010		GOLD FLASH			3.00			
87705-7011		10 MICROINCH GOLD						
87705-7012		15 MICROINCH GOLD						
87705-7013		GOLD FLASH						
87705-7014		10 MICROINCH GOLD						
87705-7015		15 MICROINCH GOLD						
87705-7020		GOLD FLASH			2.54			
87705-7021		10 MICROINCH GOLD						
87705-7022		15 MICROINCH GOLD						
87705-7023		GOLD FLASH						
87705-7024		10 MICROINCH GOLD						
87705-7025		15 MICROINCH GOLD						
87705-7030		GOLD FLASH			3.00			
87705-7031		10 MICROINCH GOLD						
87705-7032		15 MICROINCH GOLD						
87705-7033		GOLD FLASH						
87705-7034		10 MICROINCH GOLD						
87705-7035		15 MICROINCH GOLD						
87705-7040		GOLD FLASH			2.54			
87705-7041		10 MICROINCH GOLD						
87705-7042		15 MICROINCH GOLD						
87705-7043		GOLD FLASH						
87705-7044		10 MICROINCH GOLD						
87705-7045		15 MICROINCH GOLD						
87705-7060	GOLD FLASH	3.00						
87705-7061	10 MICROINCH GOLD							
87705-7062	15 MICROINCH GOLD							
87705-7063	GOLD FLASH							
87705-7064	10 MICROINCH GOLD							
87705-7065	15 MICROINCH GOLD							
87705-7066	GOLD FLASH	2.30						
87705-7067		30u"Gold	2.54					


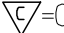


SEE SHEET 1 EC NO: SH2007-0496 TDRWN: ALL IN 2007/03/20 CHKD: 2007/03/21 APPR: WWSCHANG 2007/03/22	QUALITY SYMBOLS  = 0  = 0	GENERAL TOLERANCES (UNLESS SPECIFIED)		DIMENSION STYLE MM ONLY		SCALE 1:1	DESIGN UNITS METRIC	 THIRD ANGLE PROJECTION		
		4 PLACES	± ---	± ---	DRAWN BY	DATE	TITLE			
		3 PLACES	± ---	± ---	TOM	2004/07/19	1.0MM PITCH DDR II 240 CKTS WITH FORKLOCK			
		2 PLACES	± 0.25	± ---	CHECKED BY	DATE				
1 PLACE	± 0.25	± ---	ALL IN	2004/07/19						
ANGULAR ± 3 °			APPROVED BY	DATE	MOLEX MOLEX INCORPORATED					
			MATERIAL NO.		DOCUMENT NO.		SHEET NO.			
DRAFT WHERE APPLICABLE MUST REMAIN WITHIN DIMENSIONS			SEE TABLE		SD-87705-801		4 OF 10			
			SIZE	THIS DRAWING CONTAINS INFORMATION THAT IS PROPRIETARY TO MOLEX INCORPORATED AND SHOULD NOT BE USED WITHOUT WRITTEN PERMISSION						

7 6 5 4 3 2 1

E  
D  
C  
B  
A

E  
D  
C  
B  
A





MOLEX P/N	HOUSING MATERIAL	HOUSING COLOR	LATCH COLOR	TERMINAL MATERIAL	CONTACT PLATING	SOLDERTAIL LENGTH "B"	FORKLOCK WIDTH "C"	VOLTAGE	
87705-7100	NYLON66	BLACK	WHITE	BRASS	GOLD FLASH	2.54	  2.70 <sup>+0.10</sup> <sub>-0.05</sub>	1.8	
87705-7101					10 MICROINCH GOLD				
87705-7102					15 MICROINCH GOLD				
87705-7103					GOLD FLASH				
87705-7104					10 MICROINCH GOLD				
87705-7105					15 MICROINCH GOLD				
87705-7110		WHITE			WHITE	GOLD FLASH			2.54
87705-7111						10 MICROINCH GOLD			
87705-7112						15 MICROINCH GOLD			
87705-7113						GOLD FLASH			
87705-7114						10 MICROINCH GOLD			
87705-7115						15 MICROINCH GOLD			
87705-7120		BLUE (287U)			WHITE	GOLD FLASH			2.54
87705-7121						10 MICROINCH GOLD			
87705-7122						15 MICROINCH GOLD			
87705-7123						GOLD FLASH			
87705-7124						10 MICROINCH GOLD			
87705-7125						15 MICROINCH GOLD			
87705-7130		 GREEN (348C)			WHITE	GOLD FLASH			2.54
87705-7131						10 MICROINCH GOLD			
87705-7132						15 MICROINCH GOLD			
87705-7133						GOLD FLASH			
87705-7134						10 MICROINCH GOLD			
87705-7135						15 MICROINCH GOLD			
87705-7140		 PURPLE (2736U)			WHITE	GOLD FLASH			2.54
87705-7141						10 MICROINCH GOLD			
87705-7142						15 MICROINCH GOLD			
87705-7143						GOLD FLASH			
87705-7144	10 MICROINCH GOLD								
87705-7145	15 MICROINCH GOLD								


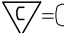

SEE SHEET 1 EC NO: SH2007-0496 TDRWN: ALL IN 2007/03/20 CHKD: 2007/03/21 APPR: WWSCHANG 2007/03/22	DESCRIPTION REV	QUALITY SYMBOLS	GENERAL TOLERANCES (UNLESS SPECIFIED)	DIMENSION STYLE	SCALE	DESIGN UNITS	THIRD ANGLE PROJECTION															
		 = 0  = 0	<table border="1"> <tr> <th></th> <th>mm</th> <th>INCH</th> </tr> <tr> <td>4 PLACES</td> <td>± ---</td> <td>± ---</td> </tr> <tr> <td>3 PLACES</td> <td>± ---</td> <td>± ---</td> </tr> <tr> <td>2 PLACES</td> <td>± 0.25</td> <td>± ---</td> </tr> <tr> <td>1 PLACE</td> <td>± 0.25</td> <td>± ---</td> </tr> </table>		mm	INCH	4 PLACES	± ---	± ---	3 PLACES	± ---	± ---	2 PLACES	± 0.25	± ---	1 PLACE	± 0.25	± ---	MM ONLY	1:1	METRIC	
			mm	INCH																		
		4 PLACES	± ---	± ---																		
		3 PLACES	± ---	± ---																		
2 PLACES	± 0.25	± ---																				
1 PLACE	± 0.25	± ---																				
	ANGULAR ± 3 °	DRAWN BY: TOM DATE: 2004/07/19 CHECKED BY: ALL IN DATE: 2004/07/19 APPROVED BY: WWSCHANG DATE: 2004/07/19	TITLE	1.0MM PITCH DDR II 240 CKTS WITH FORKLOCK																		
	DRAFT WHERE APPLICABLE MUST REMAIN WITHIN DIMENSIONS	MATERIAL NO.: SEE TABLE DOCUMENT NO.: SD-87705-801 SHEET NO.: 5 OF 10	 MOLEX INCORPORATED																			

6 5 4 3 2 1

E  
D  
C  
B  
A

E  
D  
C  
B  
A

MOLEX P/N	HOUSING MATERIAL	HOUSING COLOR	LATCH COLOR	TERMINAL MATERIAL	CONTACT PLATING	SOLDERTAIL LENGTH "B"	FORKLOCK WIDTH "C"	VOLTAGE	
87705-7200	NYLON66	BLACK	WHITE	PHOSPHOR BROZNE	GOLD FLASH	2.54	  2.70 <sup>+0.10</sup> <sub>-0.05</sub>	2.5	
87705-7201					10 MICROINCH GOLD				
87705-7202					15 MICROINCH GOLD				
87705-7203					GOLD FLASH				
87705-7204					10 MICROINCH GOLD				
87705-7205					15 MICROINCH GOLD				
87705-7210		WHITE			GOLD FLASH	2.54			
87705-7211									10 MICROINCH GOLD
87705-7212									15 MICROINCH GOLD
87705-7213									GOLD FLASH
87705-7214									10 MICROINCH GOLD
87705-7215									15 MICROINCH GOLD
87705-7220		BLUE (287U)			GOLD FLASH	2.54			
87705-7221									10 MICROINCH GOLD
87705-7222									15 MICROINCH GOLD
87705-7223									GOLD FLASH
87705-7224									10 MICROINCH GOLD
87705-7225									15 MICROINCH GOLD
87705-7230					GREEN (348C)	2.54			
87705-7231									10 MICROINCH GOLD
87705-7232									15 MICROINCH GOLD
87705-7233									GOLD FLASH
87705-7234									10 MICROINCH GOLD
87705-7235									15 MICROINCH GOLD
87705-7240					PURPLE (2736U)	2.54			
87705-7241									10 MICROINCH GOLD
87705-7242									15 MICROINCH GOLD
87705-7243									GOLD FLASH
87705-7244	10 MICROINCH GOLD								
87705-7245	15 MICROINCH GOLD								

SEE SHEET 1 EC NO: SH2007-0496 TDRWN: ALL IN 2007/03/20 CHKD: 2007/03/21 APPR: WWSCHANG 2007/03/22	DESCRIPTION REV	QUALITY SYMBOLS	GENERAL TOLERANCES (UNLESS SPECIFIED)	DIMENSION STYLE	SCALE	DESIGN UNITS	THIRD ANGLE PROJECTION	
		 = 0  = 0	mm      INCH 4 PLACES ± --- ± --- 3 PLACES ± --- ± --- 2 PLACES ± 0.25 ± --- 1 PLACE ± 0.25 ± --- ANGULAR ± 3 °	MM ONLY	1:1	METRIC		
				DRAWN BY	DATE	TITLE		
				TOM	2004/07/19	1.0MM PITCH DDR II 240 CKTS WITH FORKLOCK		
				CHECKED BY	DATE	MOLEX INCORPORATED		
		ALL IN	2004/07/19	MATERIAL NO.      DOCUMENT NO.      SHEET NO.				
		APPROVED BY	DATE	SEE TABLE      SD-87705-801      6 OF 10				
		WWSCHANG	2004/07/19	THIS DRAWING CONTAINS INFORMATION THAT IS PROPRIETARY TO MOLEX INCORPORATED AND SHOULD NOT BE USED WITHOUT WRITTEN PERMISSION				

7 6 5 4 3 2 1

E

E

D

D

C

C

B

B

MOLEX P/N	HOUSING MATERIAL	HOUSING COLOR	LATCH COLOR	TERMINAL MATERIAL	CONTACT PLATING	SOLDERTAIL LENGTH "B"	FORKLOCK WIDTH "C"	VOLTAGE
87705-7300	NYLON66	BLACK	WHITE	BRASS	GOLD FLASH	2.54	$\triangle_D \triangle_F$ 2.70 <sup>+0.10</sup> / <sub>-0.05</sub>	2.5
87705-7301					10 MICROINCH GOLD			
87705-7302					15 MICROINCH GOLD			
87705-7303					GOLD FLASH			
87705-7304					10 MICROINCH GOLD			
87705-7305					15 MICROINCH GOLD			
87705-7310		GOLD FLASH			2.54			
87705-7311		10 MICROINCH GOLD						
87705-7312		15 MICROINCH GOLD						
87705-7313		GOLD FLASH						
87705-7314		10 MICROINCH GOLD						
87705-7315		15 MICROINCH GOLD						
87705-7320		BLUE (287U)	WHITE	BRASS	GOLD FLASH	2.54		
87705-7321					10 MICROINCH GOLD			
87705-7322					15 MICROINCH GOLD			
87705-7323					GOLD FLASH			
87705-7324					10 MICROINCH GOLD			
87705-7325					15 MICROINCH GOLD			
87705-7330		$\triangle_D$ GREEN (348C)			WHITE	BRASS	GOLD FLASH	2.54
87705-7331							10 MICROINCH GOLD	
87705-7332							15 MICROINCH GOLD	
87705-7333							GOLD FLASH	
87705-7334							10 MICROINCH GOLD	
87705-7335							15 MICROINCH GOLD	
87705-7340		$\triangle_D$ PURPLE (2736U)	WHITE	BRASS			GOLD FLASH	2.54
87705-7341							10 MICROINCH GOLD	
87705-7342							15 MICROINCH GOLD	
87705-7343							GOLD FLASH	
87705-7344	10 MICROINCH GOLD							
87705-7345	15 MICROINCH GOLD							

A

A

SEE SHEET 1 EC NO: SH2007-0496 TDRWN: ALL IN 2007/03/20 CHKD: 2007/03/21 APPR: WWSCHANG 2007/03/22	QUALITY SYMBOLS $\blacktriangledown = 0$ $\triangle_C = 0$	GENERAL TOLERANCES (UNLESS SPECIFIED)		DIMENSION STYLE MM ONLY		SCALE 1:1	DESIGN UNITS METRIC	THIRD ANGLE PROJECTION		
			mm	INCH	DRAWN BY TOM	DATE 2004/07/19	TITLE 1.0MM PITCH DDR II 240 CKTS WITH FORKLOCK			
		4 PLACES	± ---	± ---	CHECKED BY ALL IN	DATE 2004/07/19				
		3 PLACES	± ---	± ---	APPROVED BY WWSCHANG	DATE 2004/07/19	MOLEX INCORPORATED DOCUMENT NO. SD-87705-801 SHEET NO. 7 OF 10			
		2 PLACES	± 0.25	± ---	MATERIAL NO. SEE TABLE					
1 PLACE	± 0.25	± ---	DRAFT WHERE APPLICABLE MUST REMAIN WITHIN DIMENSIONS		THIS DRAWING CONTAINS INFORMATION THAT IS PROPRIETARY TO MOLEX INCORPORATED AND SHOULD NOT BE USED WITHOUT WRITTEN PERMISSION					



6 5 4 3 2 1


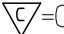



7 6 5 4 3 2 1








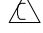
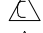

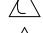
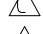
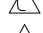
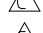
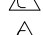
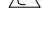
E  
D  
C  
B  
A


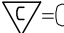



E  
D  
C  
B  
A

MOLEX P/N	HOUSING MATERIAL	HOUSING COLOR	LATCH COLOR	TERMINAL MATERIAL	CONTACT PLATING	SOLDERTAIL LENGTH "B"	FORKLOCK WIDTH "C"	VOLTAGE					
87705-7420	NYLON46	BLUE (287U)	WHITE	PHOSPHOR BROZNE	GOLD FLASH	2.54	  2.70 <sup>+0.10</sup> <sub>-0.05</sub>	1.8					
87705-7421					10 MICROINCH GOLD								
87705-7422					15 MICROINCH GOLD								
87705-7423					GOLD FLASH	3.00							
87705-7424					10 MICROINCH GOLD								
87705-7425					15 MICROINCH GOLD								
87705-7426		BLACK	WHITE	PHOSPHOR BROZNE	GOLD FLASH	2.30							
87705-7407					WHITE	30 MICROINCH GOLD			2.54				
87705-7417					BLUE (287U)								
87705-7427					GREEN (348C)								
87705-7437					PURPLE (2736U)	BLACK			WHITE				
87705-7447					BLACK								
87705-7457					ORANGE (151C)								
87705-7467													

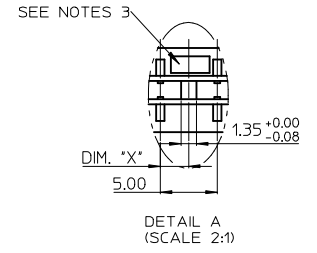
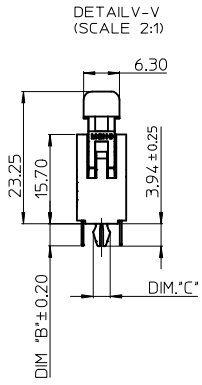
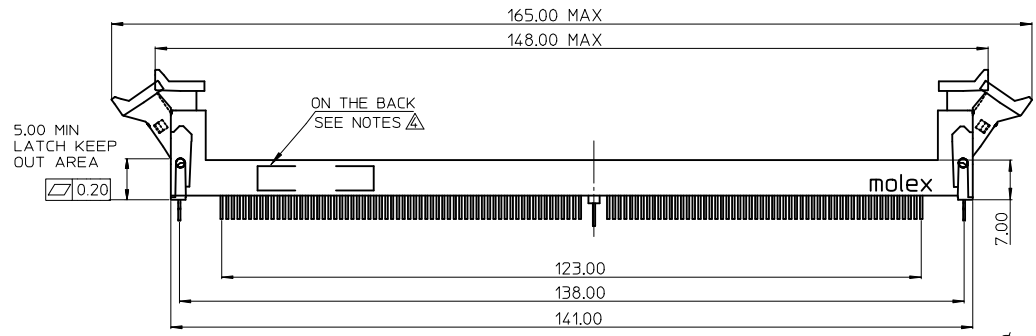
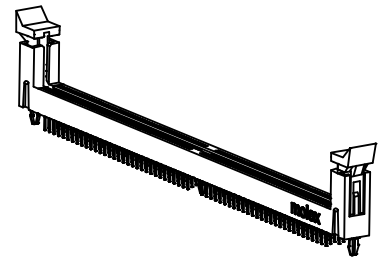
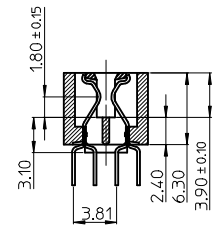
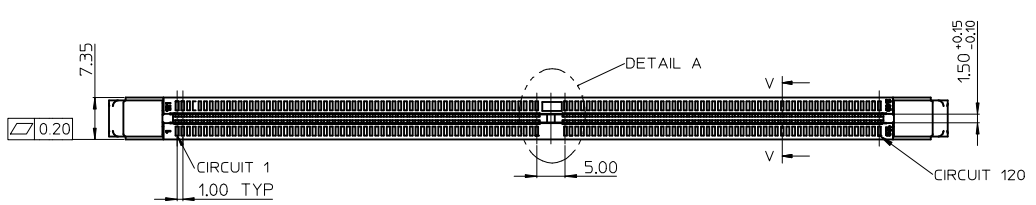
SEE SHEET 1 EC NO: SH2007-0496 TDRWN: ALL IN CHKD: APPR: WWSCHANG	2007/03/20 2007/03/21 2007/03/22	DESCRIPTION REV	QUALITY SYMBOLS	GENERAL TOLERANCES (UNLESS SPECIFIED)	DIMENSION STYLE	SCALE	DESIGN UNITS	THIRD ANGLE PROJECTION															
			 = 0  = 0	<table border="1"> <tr> <th></th> <th>mm</th> <th>INCH</th> </tr> <tr> <td>4 PLACES</td> <td>± ---</td> <td>± ---</td> </tr> <tr> <td>3 PLACES</td> <td>± ---</td> <td>± ---</td> </tr> <tr> <td>2 PLACES</td> <td>± 0.25</td> <td>± ---</td> </tr> <tr> <td>1 PLACE</td> <td>± 0.25</td> <td>± ---</td> </tr> </table>		mm	INCH	4 PLACES	± ---	± ---	3 PLACES	± ---	± ---	2 PLACES	± 0.25	± ---	1 PLACE	± 0.25	± ---	MM ONLY	1:1	METRIC	
				mm	INCH																		
			4 PLACES	± ---	± ---																		
			3 PLACES	± ---	± ---																		
2 PLACES	± 0.25	± ---																					
1 PLACE	± 0.25	± ---																					
			<table border="1"> <tr> <th>DRAWN BY</th> <th>DATE</th> <th>TITLE</th> </tr> <tr> <td>TOM</td> <td>2004/07/19</td> <td rowspan="2">1.0MM PITCH DDR II 240 CKTS WITH FORKLOCK</td> </tr> <tr> <th>CHECKED BY</th> <th>DATE</th> </tr> <tr> <td>ALL IN</td> <td>2004/07/19</td> <td></td> </tr> </table>	DRAWN BY	DATE	TITLE	TOM	2004/07/19	1.0MM PITCH DDR II 240 CKTS WITH FORKLOCK	CHECKED BY	DATE	ALL IN	2004/07/19										
DRAWN BY	DATE	TITLE																					
TOM	2004/07/19	1.0MM PITCH DDR II 240 CKTS WITH FORKLOCK																					
CHECKED BY	DATE																						
ALL IN	2004/07/19																						
			<table border="1"> <tr> <th>APPROVED BY</th> <th>DATE</th> <th>MOLEX INCORPORATED</th> </tr> <tr> <td>WWSCHANG</td> <td>2004/07/19</td> <td></td> </tr> </table>	APPROVED BY	DATE	MOLEX INCORPORATED	WWSCHANG	2004/07/19															
APPROVED BY	DATE	MOLEX INCORPORATED																					
WWSCHANG	2004/07/19																						
			<table border="1"> <tr> <th>MATERIAL NO.</th> <th>DOCUMENT NO.</th> <th>SHEET NO.</th> </tr> <tr> <td>SEE TABLE</td> <td>SD-87705-801</td> <td>8 OF 10</td> </tr> </table>	MATERIAL NO.	DOCUMENT NO.	SHEET NO.	SEE TABLE	SD-87705-801	8 OF 10														
MATERIAL NO.	DOCUMENT NO.	SHEET NO.																					
SEE TABLE	SD-87705-801	8 OF 10																					

6 5 4 3 2 1

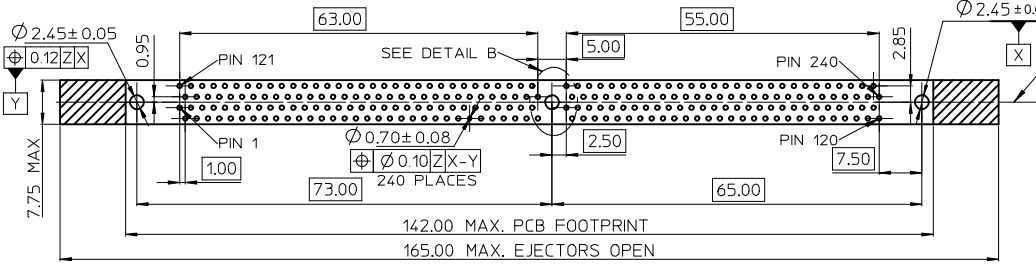
MOLEX P/N	HOUSING MATERIAL	HOUSING COLOR	LATCH COLOR	TERMINAL MATERIAL	CONTACT PLATING	SOLDERTAIL LENGTH "B"	FORKLOCK WIDTH "C"	VOLTAGE
87705-7050	NYLON66	BLACK	BLACK	PHOSPHOR BROZNE	GOLD FLASH	2.54	  $2.70^{+0.10}_{-0.05}$	1.8
87705-7051					10 MICROINCH GOLD			
87705-7052					15 MICROINCH GOLD			
87705-7053					GOLD FLASH	3.00		
87705-7054					10 MICROINCH GOLD			
87705-7055					15 MICROINCH GOLD			
87705-7056					GOLD FLASH	2.30		
 87705-7400	NYLON46	BLACK	WHITE		GOLD FLASH	2.54		
 87705-7401					10 MICROINCH GOLD			
 87705-7402					15 MICROINCH GOLD			
 87705-7403					GOLD FLASH	3.00		
 87705-7404					10 MICROINCH GOLD			
 87705-7405					15 MICROINCH GOLD			
 87705-7406			GOLD FLASH		2.30			
 87705-7450			BLACK		GOLD FLASH	2.54		
 87705-7451					10 MICROINCH GOLD			
 87705-7452					15 MICROINCH GOLD			
 87705-7453					GOLD FLASH	3.00		
 87705-7454					10 MICROINCH GOLD			
 87705-7455					15 MICROINCH GOLD			
 87705-7456					GOLD FLASH	2.30		

SEE SHEET 1 EC NO: SH2007-0496 TIDRWN: ALL IN 2007/03/20 CHKD: 2007/03/21 APPR: WWSCHANG 2007/03/22	DESCRIPTION QUALITY SYMBOLS  = 0  = 0	GENERAL TOLERANCES (UNLESS SPECIFIED)		DIMENSION STYLE MM ONLY		SCALE 1:1	DESIGN UNITS METRIC	 THIRD ANGLE PROJECTION		
			mm	INCH	DRAWN BY TOM	DATE 2004/07/19	TITLE 1.0MM PITCH DDR II 240 CKTS WITH FORKLOCK			
			4 PLACES ± ---	± ---	CHECKED BY ALL IN	DATE 2004/07/19				
			3 PLACES ± ---	± ---	APPROVED BY WWSCHANG	DATE 2004/07/19	 MOLEX INCORPORATED DOCUMENT NO. SD-87705-801 SHEET NO. 9 OF 10			
			2 PLACES ± 0.25	± ---	MATERIAL NO. SEE TABLE					
	1 PLACE ± 0.25	± ---	DRAFT WHERE APPLICABLE MUST REMAIN WITHIN DIMENSIONS		SIZE  4	THIS DRAWING CONTAINS INFORMATION THAT IS PROPRIETARY TO MOLEX INCORPORATED AND SHOULD NOT BE USED WITHOUT WRITTEN PERMISSION				

7 6 5 4 3 2 1

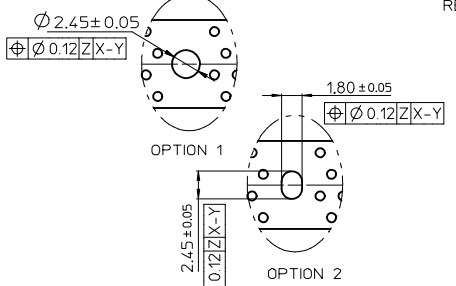


KEY LOCATION	VOLTAGE	DIM.'X'
LEFT	2.5V	1.50
CENTER	1.8V	2.50



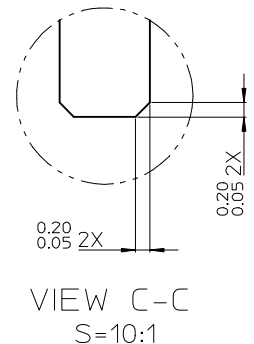
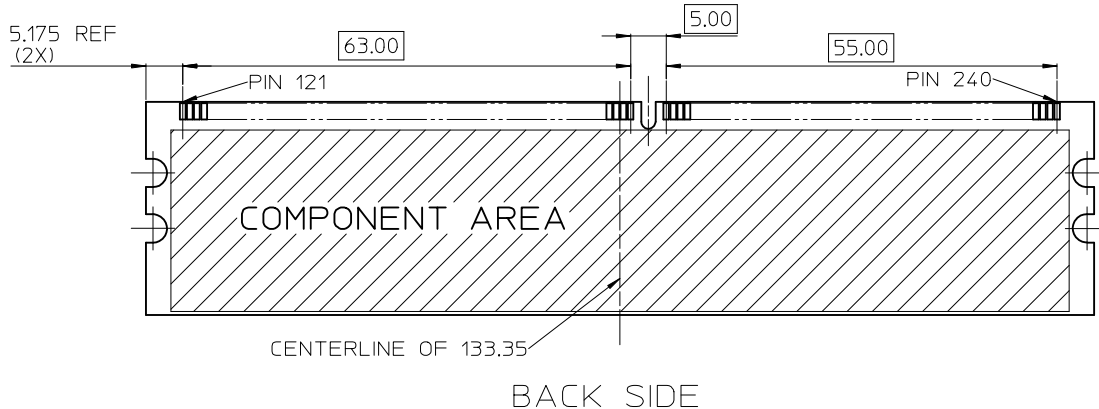
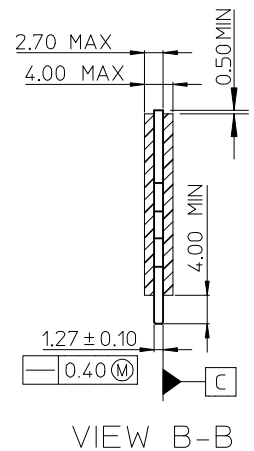
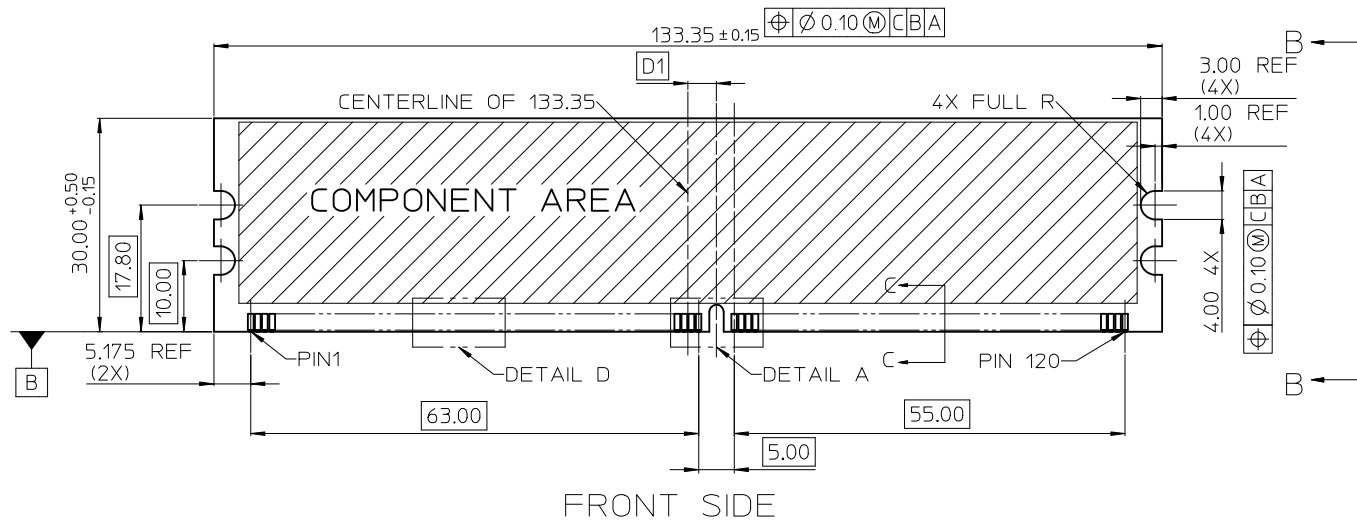
- NOTES:
- MATERIAL:  
HOUSING: SEE TABLE ,GLASS FIBER FILLED UL94V-0,COLOR:SEE TABLE.  
LATCH: POLYAMIDE, GLASS FIBER FILLED UL94V-0, COLOR : SEE TABLE.  
FORKLOCK: BRASS  
TERMINAL: SEE TABLE.
  - PLATING:  
TERMINAL  
CONTACT AREA: SEE TABLE,  
SOLDER TAIL: 100 MICROINCH MIN. MATT TIN.  
UNDER PLATING: NICKEL OVERALL.  
FORKLOCK  
SOLDER AREA: 100 MICROINCH MIN. BRIGHT TIN.  
UNDER PLATING: NICKEL OVERALL.
  - VOLTAGE: SEE TABLE
  - DATE CODE SHOULD BE LOADED ON THE BACK OF THIS AREA.
  - PRODUCT SPECIFICATION REFER TO PS-87705-801.
  - PACKAGING SPECIFICATION REFER TO PK-87705-801.
  - TEST SUMMARY:REFER TO TS-87705-801.

RECOMMENDED PCB LAYOUT  
CONNECTOR SIDE



<b>DEL PART NUMBER</b> EC NO: SH2009-0209 DRAWN:FYANG05 2008/10/23 CHKD: 2008/10/23 APPR:HWANG 2008/11/06	QUALITY SYMBOLS ▽=0 ◻=0	GENERAL TOLERANCES (UNLESS SPECIFIED)		DIMENSION STYLE MM ONLY		SCALE 1:1	DESIGN UNITS METRIC	THIRD ANGLE PROJECTION
		4 PLACES ± --- ± --- 3 PLACES ± --- ± --- 2 PLACES ± 0.25 ± --- 1 PLACE ± 0.25 ± ---	mm INCH	DRAWN BY DXUE	DATE 2006/10/19	TITLE 1.0MM PITCH DDR II 240 CKTS WITH 3.50MM TAIL LENGTH		
		DRAFT WHERE APPLICABLE MUST REMAIN WITHIN DIMENSIONS		CHECKED BY HARVEY	DATE 2006/10/19	MOLEX INCORPORATED		
		ANGULAR ± 3 °		APPROVED BY JENNY	DATE 2006/10/19	MATERIAL NO. SEE TABLE	DOCUMENT NO. SD-87705-901	
THIS DRAWING CONTAINS INFORMATION THAT IS PROPRIETARY TO MOLEX INCORPORATED AND SHOULD NOT BE USED WITHOUT WRITTEN PERMISSION								

6 5 4 3 2 1



SEE SHEET 1 ECT NO: SH2009-0209 DRAWN: FYANG05 CHKD: APPR: HWANG	DESCRIPTION 2008/10/23 2008/10/23 2008/11/06	QUALITY SYMBOLS	GENERAL TOLERANCES (UNLESS SPECIFIED)		DIMENSION STYLE MM ONLY		SCALE 1:1	DESIGN UNITS METRIC	THIRD ANGLE PROJECTION	
		$\nabla=0$ $\sphericalangle=0$	mm	INCH	DRAWN BY DXUE	DATE 2006/10/19	TITLE 1.0MM PITCH DDR II 240 CKTS WITH 3.50MM TAIL LENGTH			
		$\nabla=0$ $\sphericalangle=0$	4 PLACES ± ---	± ---	CHECKED BY HARVEY	DATE 2006/10/19				
		$\nabla=0$ $\sphericalangle=0$	3 PLACES ± ---	± ---	APPROVED BY JENNY	DATE 2006/10/19	MOLEX INCORPORATED			
		$\nabla=0$ $\sphericalangle=0$	2 PLACES ± 0.25	± ---	MATERIAL NO.	DOCUMENT NO. SD-87705-901				
		1 PLACE ± 0.25	± ---	SEE TABLE						
		ANGULAR ± 3 °		THIS DRAWING CONTAINS INFORMATION THAT IS PROPRIETARY TO MOLEX INCORPORATED AND SHOULD NOT BE USED WITHOUT WRITTEN PERMISSION						
DRAFT WHERE APPLICABLE MUST REMAIN WITHIN DIMENSIONS										

7

6

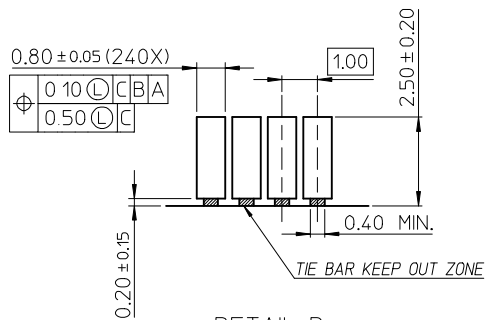
5

4

3

2

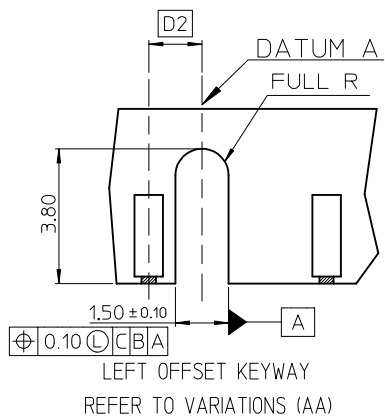
1



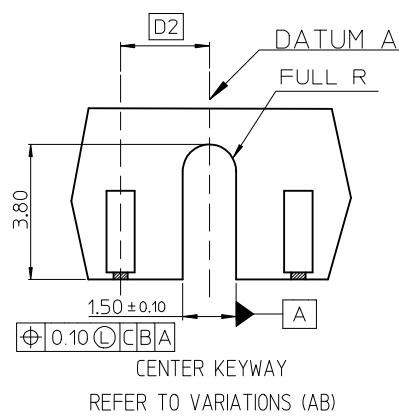
DETAIL D

VARIATIONS

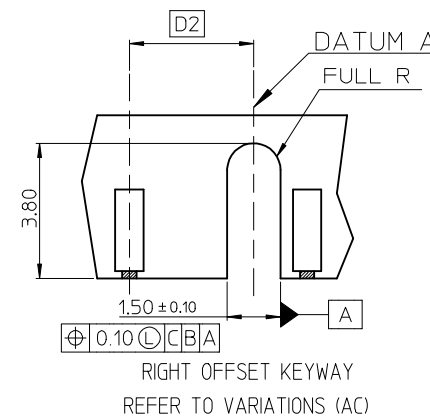
VAR	AA	AB	AC
D1	3.00 BASIC	4.00 BASIC	5.00 BASIC
D2	1.50 BASIC	2.50 BASIC	3.50 BASIC



LEFT OFFSET KEYWAY  
REFER TO VARIATIONS (AA)



CENTER KEYWAY  
REFER TO VARIATIONS (AB)



RIGHT OFFSET KEYWAY  
REFER TO VARIATIONS (AC)

DETAIL A S=5:1  
CENTER KEY ZONE

THIS DESIGN IS BASED ON DESIGN OBJECTIVES AND IS STRICTLY TENTATIVE. IT MAY CHANGE BASED ON RESULTS OF ADDITIONS DESIGN REVIEWS AND VERIFICATIONS.

<b>SEE SHEET 1</b> EC NO: SH2009-0209 DRWN: FYANG05 CHKD: APPR: HWANG	QUALITY SYMBOLS = 0 = 0	GENERAL TOLERANCES (UNLESS SPECIFIED)		DIMENSION STYLE <b>MM ONLY</b>		SCALE	DESIGN UNITS <b>METRIC</b>	THIRD ANGLE PROJECTION	
		4 PLACES ± --- ± ---	mm INCH	DRAWN BY DXUE	DATE 2006/10/19	TITLE <b>1.0MM PITCH DDR II          240 CKTS WITH 3.50MM          TAIL LENGTH</b>			
		3 PLACES ± --- ± ---		CHECKED BY HARVEY	DATE 2006/10/19	MOLEX INCORPORATED			
		2 PLACES ± 0.25 ± ---		APPROVED BY JENNY	DATE 2006/10/19	MATERIAL NO. <b>SEE TABLE</b>	DOCUMENT NO. <b>SD-87705-901</b>	SHEET NO. <b>3 OF 4</b>	
		1 PLACE ± 0.25 ± ---		DRAFT WHERE APPLICABLE MUST REMAIN WITHIN DIMENSIONS		THIS DRAWING CONTAINS INFORMATION THAT IS PROPRIETARY TO MOLEX INCORPORATED AND SHOULD NOT BE USED WITHOUT WRITTEN PERMISSION			
		ANGULAR ± 3 °							

6

5

4

3

2

1

7 6 5 4 3 2 1

MOLEX P/N	HOUSING MATERIAL	HOUSING COLOR	LATCH COLOR	TERMINAL MATERIAL	CONTACT PLATING	SOLDERTAIL LENGTH "B"	FORKLOCK WIDTH "C"	VOLTAGE
87705-7407	NYLON46	BLACK	WHITE	PHOSPHOR BROZNE	30 MICROINCH GOLD	2.54±0.20	2.70±0.10	1.8
87705-7427	NYLON46	BLUE	WHITE	PHOSPHOR BROZNE	30 MICROINCH GOLD			
87705-7418	NYLON46	BLACK	WHITE	PHOSPHOR BROZNE	30 MICROINCH GOLD	3.18±0.20	2.70±0.10	

SEE SHEET 1 ECT NO: SH2009-0209 DRWN:FYANG05 2008/10/23 CHKD: 2008/10/23 APPR:HWANG 2008/11/06	DESCRIPTION REV	QUALITY SYMBOLS	GENERAL TOLERANCES (UNLESS SPECIFIED)		DIMENSION STYLE MM ONLY		SCALE 1:1	DESIGN UNITS METRIC	THIRD ANGLE PROJECTION			
		▽=0 ◻=0		mm	INCH	DRAWN BY	DATE	TITLE 1.0MM PITCH DDR II 240 CKTS WITH 3.50MM TAIL LENGTH				
			4 PLACES	± ---	± ---	DXUE	2006/10/19					
			3 PLACES	± ---	± ---	CHECKED BY	DATE					
			2 PLACES	± 0.25	± ---	HARVEY	2006/10/19					
	1 PLACE	± 0.25	± ---	APPROVED BY	DATE	MOLEX INCORPORATED						
	ANGULAR ± 3 °		JENNY	2006/10/19								
DRAFT WHERE APPLICABLE MUST REMAIN WITHIN DIMENSIONS			MATERIAL NO.		SEE TABLE		DOCUMENT NO.	SHEET NO.				
					SIZE		THIS DRAWING CONTAINS INFORMATION THAT IS PROPRIETARY TO MOLEX INCORPORATED AND SHOULD NOT BE USED WITHOUT WRITTEN PERMISSION					

6 5 4 3 2 1