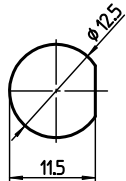


Mounting Hole



Nut

8

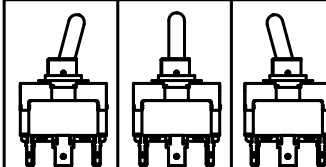


Notes:

Operating temperature -20°C to +70°C

All materials and finishes comply with RoHS directive

Function Chart



Specifications

Rating	Initial Contact Resistance	Insulation Resistance	Dielectric Strength	Endurance	TYCO PN	Part
AC 125V 20A	MAX 10 milliohms at DC 2 ~ 4V 1A	MIN 1000 M Ohms at DC 500V	AC 1,5kV/1 min (AC 1,8kV/1 sec)	electrically 20,000 cycles at 20 cycles/min (rated load resistive)	3-6437592-9	AWTP1504
AC 250V 20A				7-6437630-2	AWTN1504	
DC 30V 20A				1-6437630-0	AWTT1504	
				mechanically 40,000 cycles at 20 cycles/min	1-6437630-1	AWTS1504

Terminals 1 and 2 4 and 5	Terminals 2 and 3 5 and 6
ON	OFF
ON	NONE
ON	NONE (ON)
ON	OFF (ON)
(ON)	OFF (ON)

(ON) : momentary action
 OFF : mechanical position
 without electrical connection
 NONE : no mechanical position

Materials Chart

Part No.	Part Name	Material/Surface	Optional Description
1	Case	PM-EG	
2	F Contact	Silver alloy + C3602BD	
3	Common Contact	C3602BD	
4	Terminal	C2680R	
5	Frame	SPCC	
6	Bushing	Zinc alloy	
7	Actuator	C3602BD-F	
8	Nut	C3602BD	
9	L Washer	SK-5	
10	Shaft	SUS	
11	Rubber seal	NBR	
12	Insert molded rubber	Silicon rubber	

ECR-NO.	DATE	NAME	INFO	DATE	NAME

SCALE:	NAME:	DWG NO.:
	Power Toggle Switch double pole	1968501
	Customer Drawing	OPTIONAL NO.:
		Power Toggle A

THIS INFORMATION IS CONFIDENTIAL AND PROPRIETARY TO TYCO ELECTRONICS AUSTRALIA, GBRH AND ITS WORLDWIDE SUBSIDIARIES AND AFFILIATES. IT MAY NOT BE DISCLOSED TO ANYONE OTHER THAN TYCO ELECTRONICS PERSONNEL, WITHOUT WRITTEN AUTHORIZATION FROM TYCO ELECTRONICS AUSTRALIA.