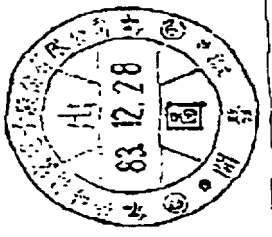
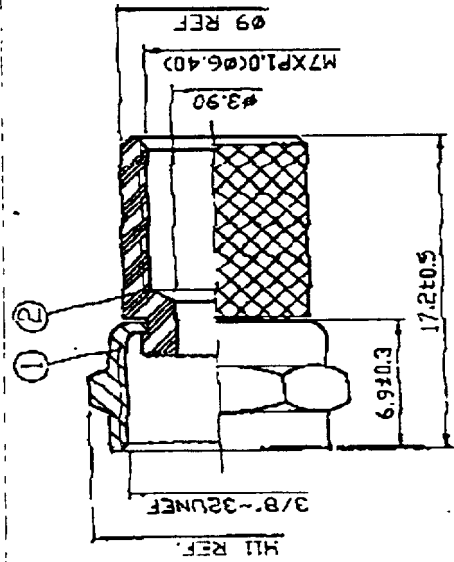


1/2

To: Lonetta.
FR: AB

As per request.

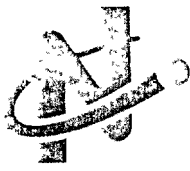


Farnell No. 110684

DATE	REV.
18-11-2	A-0
TITLE	DWG. NO.
18-11-2 NUT	18-0078
UNIT	SCALE
mm	4:1
TOLERANCES	ANGLE
X ±0.2	±0°
XX ±0.1	±0.5°
XXX ±0.05	±0.1°
APPROVAL	余其德
CHECK	
DRAW	

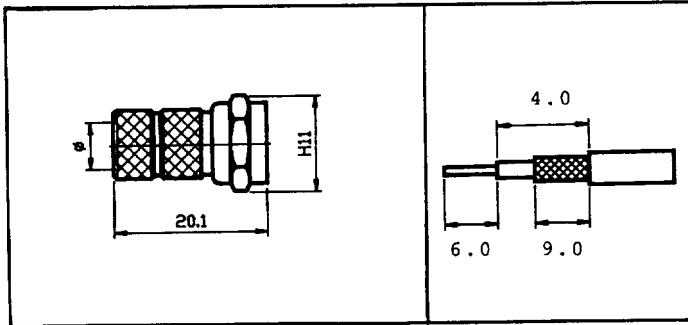
佳楠精密電子股份有限公司
CHIN NAN PRECISION ELECTRONICS CO., LTD.

NO	DESCRIPTION	MATERIAL	QTY	FINISH
2	BODY	BRASS	1	NICKEL
1	NUT	BRASS	1	NICKEL



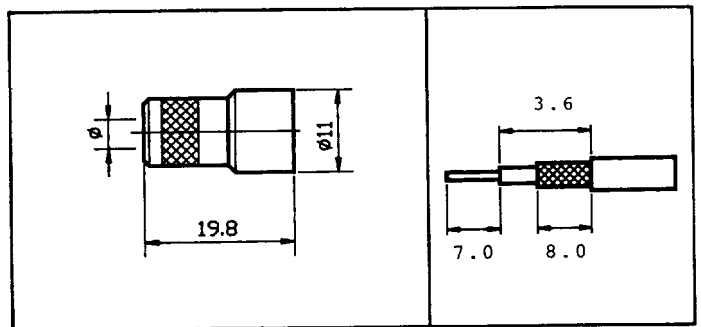
TWIST ON

Straight Plug Twist On



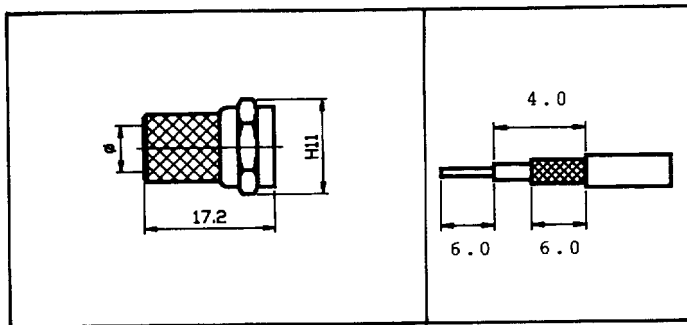
CN PART NO	APPLICABLE CABLE RG/U	ϕ - MM	STANDARD INSUL. & PLATING			UG NO	NOTES
			INSUL.	CONTACT	BODY		
18-10A-3	5C2V	7.3					
18-10G-2	59,62A	6.4			NICKEL		
18-10F-1	58,3C2V	5.3					

Straight Plug Quick Twist On



CN PART NO	APPLICABLE CABLE RG/U	ϕ - MM	STANDARD INSUL. & PLATING			UG NO	NOTES
			INSUL.	CONTACT	BODY		
18-12G	59,62A	6.4			NICKEL		

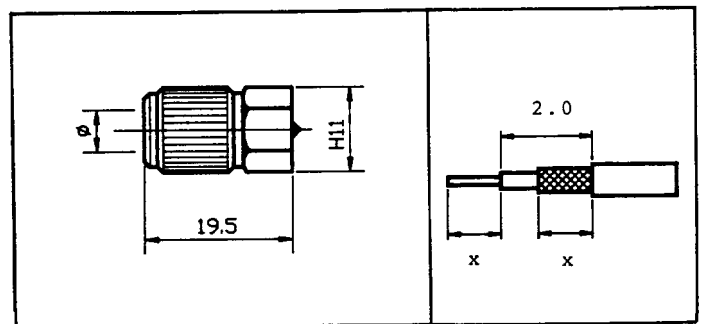
Straight Plug Twist On



CN PART NO	APPLICABLE CABLE RG/U	ϕ - MM	STANDARD INSUL. & PLATING			UG NO	NOTES
			INSUL.	CONTACT	BODY		
18-11A-3	5C2V	7.3					
18-11G-2	59,62A	6.4			NICKEL		
18-11F-1	58,3C2V	5.3					

SPEED CONNECTOR

Straight Speed Plug



CN PART NO	APPLICABLE CABLE RG/U	ϕ - MM	STANDARD INSUL. & PLATING			UG NO	NOTES
			INSUL.	CONTACT	BODY		
18-29G	59,62A	6.3	DEL RIN	NICKEL	NICKEL		

150-684