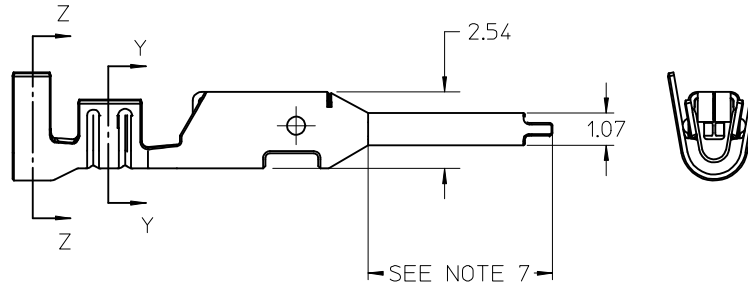
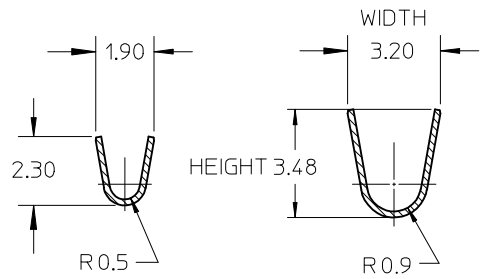
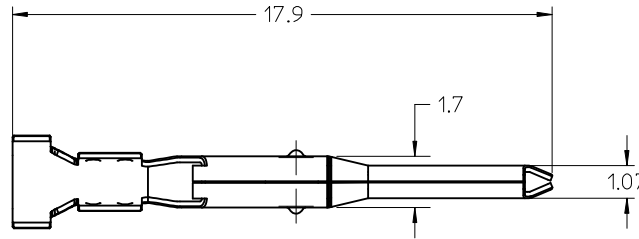
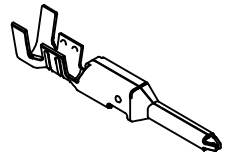


NOTES:

- MATERIAL: HIGH PERFORMANCE COPPER ALLOY
- FINISH:
  - 222 - OVERALL TIN: 100 MI MIN OVER NICKEL
  - 228 - SELECT GOLD: 30 MI MIN, SELECT TIN: 100 MI MIN OVER NICKEL
- PRODUCT SPECIFICATION: PS-46064-001
- PACKAGING: REEL PACK 4,000 PARTS PER REEL  
LOOSE PIECE 1,000 PARTS PER BAG  
SEE PK-46056-002
- TERMINAL TO BE USED WITH ASSY NUMBER: 46065
- WIRE SPECIFICATION: SEE CHART.
- WHEN USING OVERALL TIN PLATED TERMINALS: FOR APPLICATIONS INVOLVING VIBRATION AND/OR THERMAL CYCLING, MOLEX STRONGLY RECOMMENDS THE USE OF NYE LUBRICANT, NYOGEL 760G, ON THE MATING END OF THE TERMINAL. LUBRICANT MAY BE APPLIED BEFORE OR AFTER THE TERMINALS ARE INSERTED INTO THE HOUSING.



SECTION Y-Y CONDUCTOR CRIMP  
SECTION Z-Z INSULATION CRIMP

LOOSE PACKAGED MATERIAL NUMBER	REEL PACKAGED MATERIAL NUMBER	FINISH	WIRE SPEC	INSULATION DIA	INSULATION (CRIMPED)			CONDUCTOR (CRIMPED)				
					HEIGHT		WIDTH		HEIGHT		WIDTH	
					MIN	MAX	MIN	MAX	MIN	MAX	MIN	MAX
46056-0004	46056-0002	222 - TIN	UL1015 18/20 AWG	2.52 / 2.81	N/A	3.20	2.70	2.90	1.05	1.15	1.50	1.70
46056-0005	46056-0003	228 - SELECT GOLD	UL1015 18/20 AWG	2.52 / 2.81	N/A	3.20	2.70	2.90	1.05	1.15	1.50	1.70

ADDED LOOSE PIECE  
EC NO: UCP2009-2862  
DRWN: EONANT 2009/05/26  
CHKD: 2009/05/26  
APPR: JCOMERC 2009/05/27

GENERAL TOLERANCES (UNLESS SPECIFIED)

	mm	INCH
4 PLACES	± ---	± ---
3 PLACES	± ---	± ---
2 PLACES	± 0.25	± ---
1 PLACE	± 0.38	± ---

ANGULAR ± 3 °

DRAFT WHERE APPLICABLE MUST REMAIN WITHIN DIMENSIONS

DIMENSION STYLE  
**MM ONLY**

DRAWN BY: KSAMIEC  
DATE: 2007/03/22

CHECKED BY: \_\_\_\_\_  
DATE: \_\_\_\_\_

APPROVED BY: \_\_\_\_\_  
DATE: \_\_\_\_\_

MATERIAL NO. SEE CHART

SIZE A

SCALE: 4:1

DESIGN UNITS: METRIC

THIRD ANGLE PROJECTION

TITLE: SEALED MINIFIT H20 PLUG TERMINAL

MOLEX MOLEX INCORPORATED

DOCUMENT NO. SD-46056-001

SHEET NO. 1 OF 1

THIS DRAWING CONTAINS INFORMATION THAT IS PROPRIETARY TO MOLEX INCORPORATED AND SHOULD NOT BE USED WITHOUT WRITTEN PERMISSION