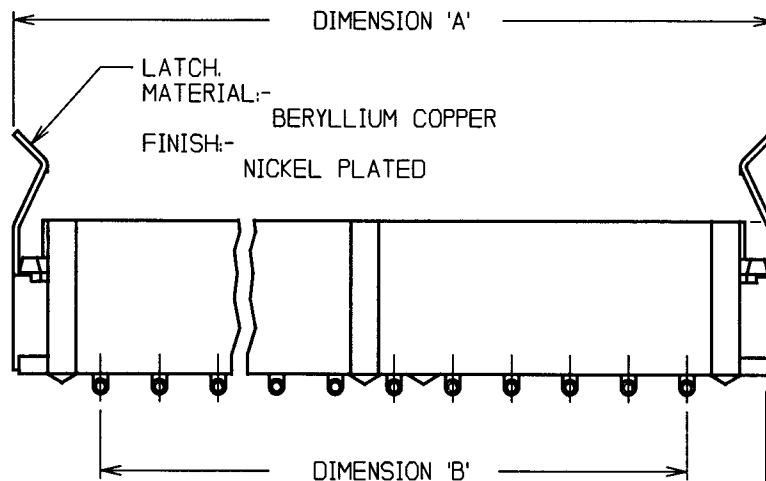
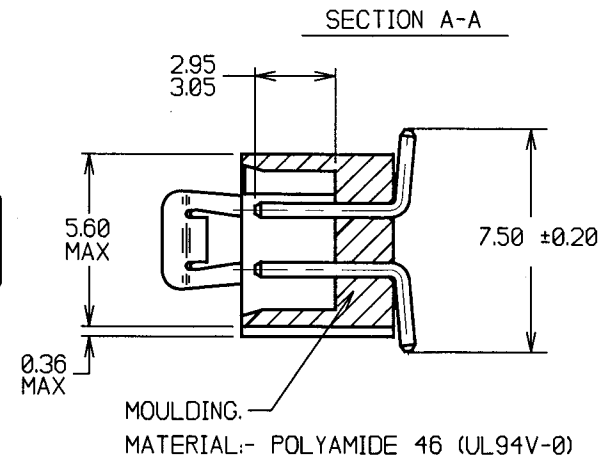
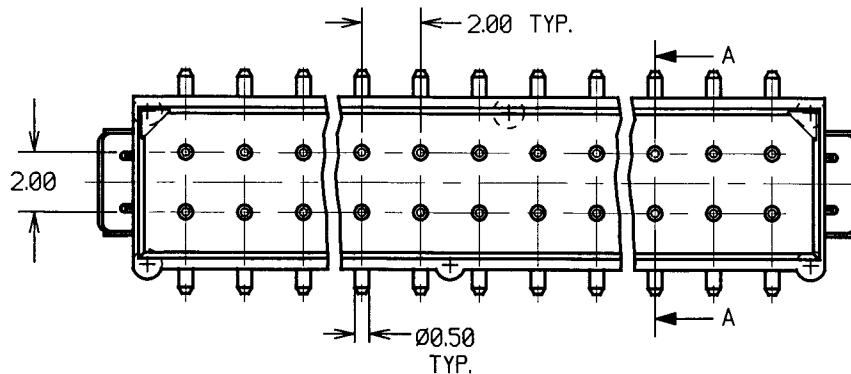


CONTACT MATERIAL:-
 PHOSPHOR BRONZE PB102
 FINISH:-
 01 = TIN/LEAD CONTACT
 05 = GOLD CONTACT
 22 = SELECTIVE GOLD



No. OF CONTACTS	DIM. 'A' MAX.	DIM. 'B'
4	7.60	2.00
6	9.60	4.00
8	11.60	6.00
10	13.60	8.00
12	15.60	10.00
14	17.60	12.00
16	19.60	14.00
18	21.60	16.00
20	23.60	18.00
26	29.60	24.00
34	37.60	32.00
44	47.60	42.00

CUSTOMER INFORMATION SHEET

ORDER CODE
M80-828XXXX
 No. OF CONTACTS (SEE TABLE)
 FINISH:
 01 = TIN/LEAD
 05 = GOLD
 22 = SELECTIVE GOLD

5	18.06.96	3367
1	24.10.94	2761
A	09.03.94	----
ISS.	DATE	C/N
APPROVED:	<i>[Signature]</i>	
CHECKED:	<i>[Signature]</i>	
DRAWN:	A. LIOTTA	
CUSTOMER REF.		
ASSEMBLY DRG:		

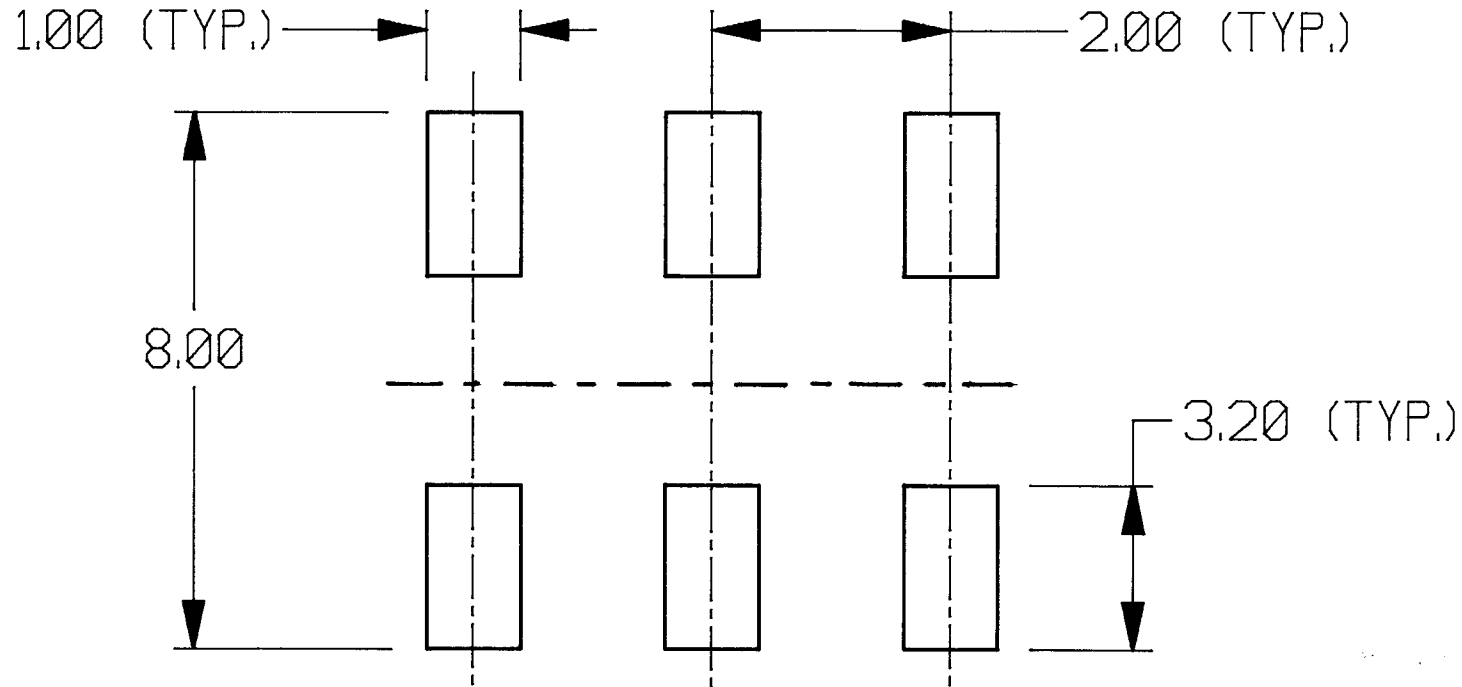


HARWIN INC U.S.A. TEL: (812) 285 0055 FAX: (812) 285 0056	HARWIN PLC U.K. TEL: 01705 370451 FAX: 01705 324010	HARWIN PTE SINGAPORE TEL: 65 7794909 FAX: 65 7793868	HARWIN CONNECTORS KOREA TEL: 822 521 0747 FAX: 822 521 0749
--	--	---	--

TOLERANCES
 X. = ±1mm
 X.X = ±0.25mm
 X.XX = ±0.10mm
 X.XXX = ±0.01mm
 ANGLES = ±1°
 UNLESS STATED

MATERIAL:
 SEE ABOVE
 FINISH:
 SEE ABOVE
 S/AREA:
 mm²

TITLE: PLUG ASSEMBLY
 VERTICAL SMT DOUBLE ROW
 (LATCHED)
 DRAWING NUMBER:
M80-828XXXX
 SHT 2 OF 2



1.	8.12.92	
ISS.	DATE	CHANGE
APPD.	<i>A.K. McNeill</i>	
CHKD.	<i>LS</i>	
DRAWN.	I.C.SANDY	
CUSTOMER REF.		
COMPUTER No.		
ASSEMBLY DWG.		

HARWIN

FITZHERBERT RD., PORTSMOUTH, U.K. PO6 1RT
 TELEPHONE:
 0705 370451 (SALES) FAX: 0705 324010
 0705 388755 (WORKS)

MATERIAL:-

TITLE:-
 PAD DETAIL

TOLERANCES

X.	±1mm
X.X	±0.25mm
X.XX	±0.1mm
X.XXX	±0.01mm
ANGLES	±1°

FINISH:-

S/AREA	mm ²
IF IN DOUBT - ASK	
NOT TO SCALE	

DRAWING NUMBER
 M80-826XX22
 SHEET 2