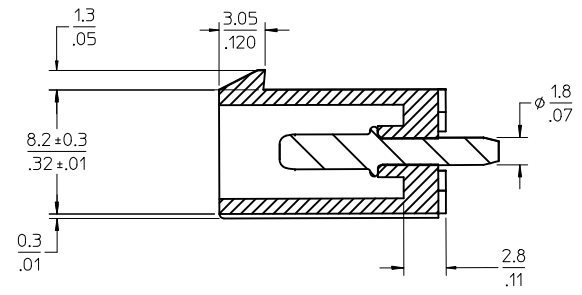
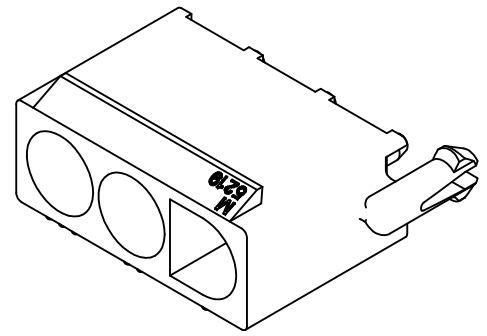
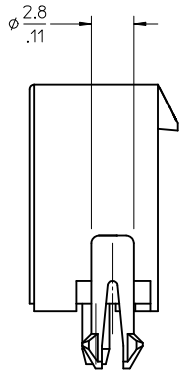
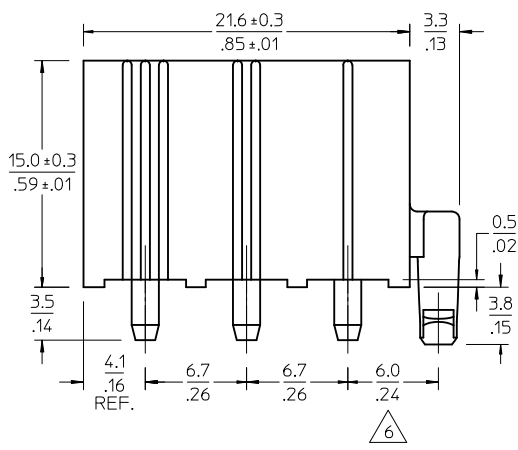
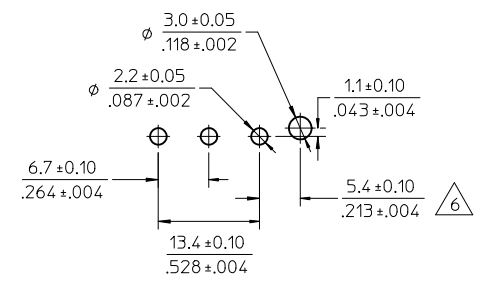
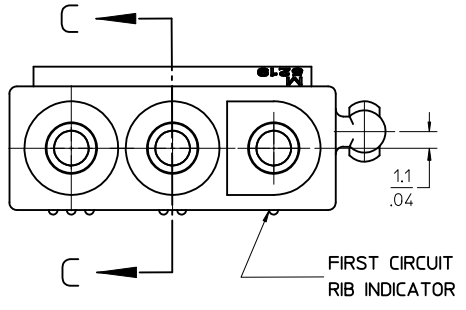


CIRCUITS	EDP NO.	ENG. NO.
3	39287038	5219-03A-201
	15311036	5219-03A



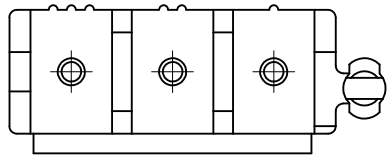
SECTION C-C



NOTES:

- MATERIAL:
HOUSING: "BLANK" = NYLON 6/6, UL94V-2, COLOR: NATURAL
"201" = NYLON 6/6, UL94V-0, COLOR: NATURAL
TERMINAL: C2700W BRASS
- FINISH: 0.000003/(.0000001) MIN. TIN OVERALL OVER
0.000001/(.00000004) MIN. NICKEL OVERALL
- PRODUCT SPECIFICATION: PS-3191-003
- PACKAGING: NONE
- MATES WITH: 3191-03R SERIES
- DIFFERENCE OF DIMENSION TO PREVENT RISE FROM P.C.B.
- PARTS CONFORM TO CLASS 'B' REQUIREMENTS OF COSMETIC SPECIFICATION PS-45499-002.
- ASSEMBLIES MAY CONTAIN SOLID OR SWAGED (HOLLOW) PINS.

RECOMMENDED P.C. BOARD HOLE DIM.
SCALE 2:1



ADD NOTE 8	EC NO: UCP2012-0046	2011/08/08
	DRW:NAELHAG	2011/08/26
REV	CHKD:JBELL	2011/09/02
	APPR:FSMITH	
DESCRIPTION	QUALITY SYMBOLS	
	▽=0	
	▽=0	

GENERAL TOLERANCES (UNLESS SPECIFIED)	
mm	INCH
4 PLACES ± ---	± ---
3 PLACES ± ---	± .005
2 PLACES ± 0.13	± .010
1 PLACE ± 0.25	± ---
ANGULAR ± 1/2°	
DRAFT WHERE APPLICABLE MUST REMAIN WITHIN DIMENSIONS	

DIMENSION STYLE	
MM/IN	
DRAWN BY	DATE
TASAKAWA	1995/11/18
CHECKED BY	DATE
HHIRAMOT	1995/11/18
APPROVED BY	DATE
FUKUSHIM	1995/11/18
MATERIAL NO.	
SEE CHART	

SCALE	DESIGN UNITS	THIRD ANGLE PROJECTION
4:1	METRIC	
TITLE		
NEW INTERNATIONAL CONN. HEADER AND ASSY.		
MOLEX INCORPORATED		
DOCUMENT NO.	SHEET NO.	
SD-5219-03A-*	1 OF 1	
THIS DRAWING CONTAINS INFORMATION THAT IS PROPRIETARY TO MOLEX INCORPORATED AND SHOULD NOT BE USED WITHOUT WRITTEN PERMISSION		