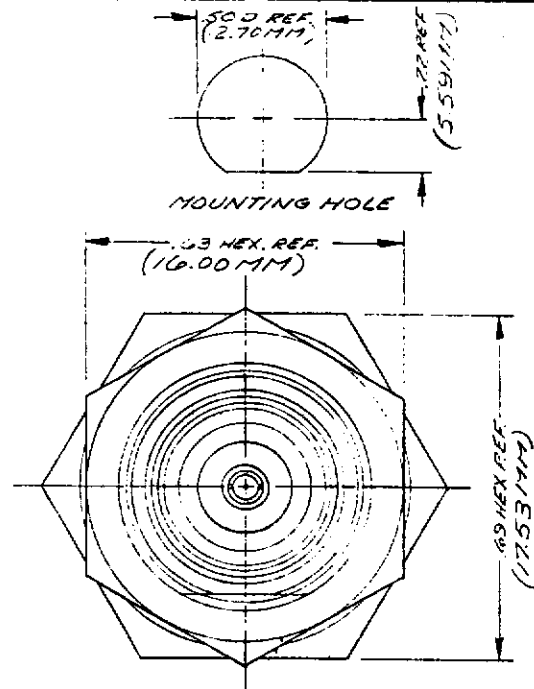
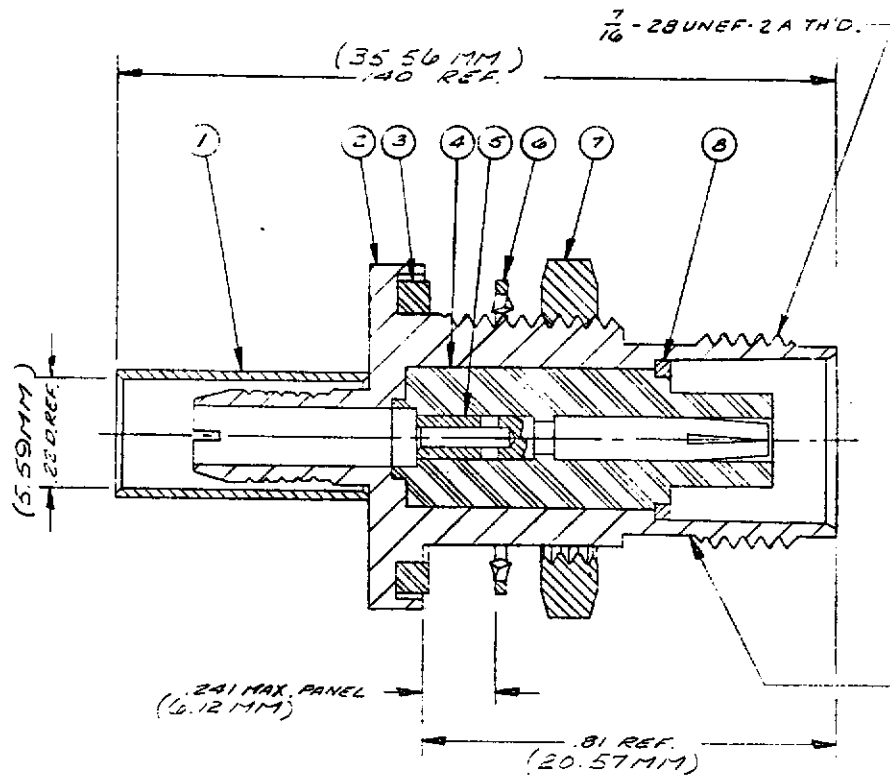


DASH NO.	DESCRIPTION	MADE FROM
----------	-------------	-----------



M39012/28-0503

REVISIONS	
ISSUE	CHANGES
0	ER 13441 JL 22 JUL 74
1	CN 13089 A GA 5 AUG 74
2	CN 13241 A MJE 1 OCT 74
3	CN 21633 C PAS 23 FEB 81
4	CN 22767 E JEP 17 NOV 81
5	CN 25533 D MJB 15 DEC 83
6	CN 32302 A LNM 20 JUN 90

- NOTES:**
- FOR USE WITH RG-142, 223 & 400 U.C. CABLE GROUPS.
 - FOR CABLE TRIMMING USE KTY-113 & KTD-166.
 - FOR FORMING USE CRIMP DIE SIZE 01.
 - FOR CABLING INSTRUCTIONS SEE CP-465.
 - ITEM 5 TO BE SUPPLIED UNASSEMBLED.

S-D

UNLESS OTHERWISE SPECIFIED:

- | | |
|--|--|
| 1. TOLERANCES: FRACTIONS & 2 PLACE DECIMALS ± .010 | 2. REMOVE ALL BURRS. BREAK SHARP EDGES .005 MAX. |
| 3 PLACE DECIMALS ± .004 | 3. NO FILLETS PERMITTED. |
| T. I. R. CONCENTRICITY OF ANY 2 DIAMETERS MAY NOT EXCEED HALF THE SUM OF THEIR TOLERANCES. | 4. SURFACE ROUGHNESS 63 MICROINCHES RMS MAX. |
| | 5. ALL DIMENSIONS PRIOR TO PLATING. |

STAMP: 91836 M39012/28-0503
KA-15-152 XXXX
DATE CODE

ITEM	REQ'D	DESCRIPTION	PART NO.
9	1	CABLING INSTRUCTIONS	
8	1	RETAINING RING	
7	1	HEX NUT	492A-9-MC7
6	1	LOCKWASHER	492A-12-MC7
5	1	BNC CRIMP CAPTIVE CONTACT	1-507-34M9D
4	1	INSULATOR	
3	1	GASKET	492A-10-M9A
2	1	K-GRIP BODY	
1	1	K-GRIP SLEEVE	5-89-05-2MCT

S-D

KA-15-152

USED ON:

REF:

FINISH

SPEC. KER 19009

MATL:

SPEC.

TNC BULK HEAD JACK

DRAWN JL DATE 23 MAY 74

APPR. LI DATE 22 JUL 74

KINGS ELECTRONICS
40 MARBLEDALE ROAD
TUCKAHOE, N. Y. 10707

M39012/28-0503