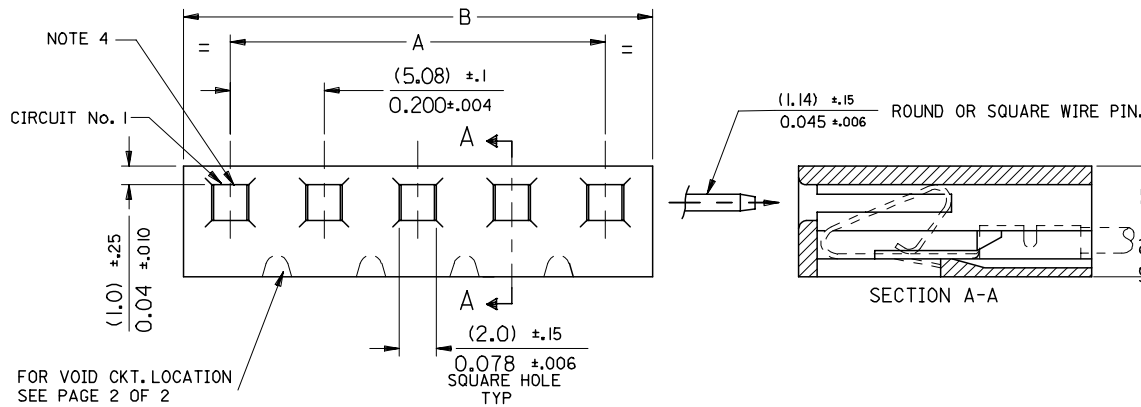
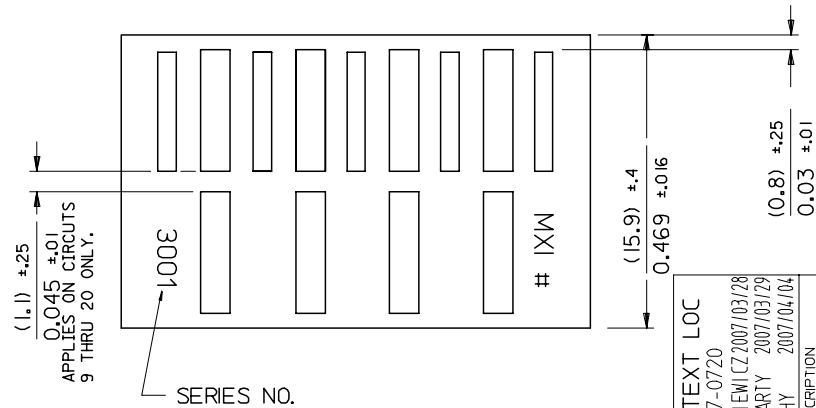


NOTE :
 1. DIMENSIONS SHOWN MILLIMETERS INCHES
 2. FOR OTHER PRODUCT SPEC'S. SEE PSX 10-39.
 3. THIS HOUSING USES KK TERM. No's. 2478, 2578 & 28



FOR VOID CKT. LOCATION
SEE PAGE 2 OF 2



MAT'L: NYLON

CENTER RIB ONLY

10-01-1204	E-3001-20	3.800 ±.012	4.000 ⁺⁰ _{-.016}	96.52 ±0.3	101.60 ⁺⁰ _{-.15}
-1194	-19	3.600 ±.012	3.800 ⁺⁰ _{-.016}	91.44 ±0.3	96.52 ⁺⁰ _{-.15}
-1184	-18	3.400 ±.012	3.600 ⁺⁰ _{-.016}	86.36 ±0.3	91.44 ⁺⁰ _{-.15}
-1174	-17	3.200 ±.012	3.400 ⁺⁰ _{-.016}	81.28 ±0.3	86.36 ⁺⁰ _{-.15}
-1164	-16	3.000 ±.010	3.200 ⁺⁰ _{-.016}	76.20 ±0.25	81.28 ⁺⁰ _{-.15}
-1154	-15	2.800 ±.010	3.000 ⁺⁰ _{-.016}	71.12 ±0.25	76.20 ⁺⁰ _{-.15}
-1144	-14	2.600 ±.010	2.800 ⁺⁰ _{-.016}	66.04 ±0.25	71.12 ⁺⁰ _{-.15}
-1134	-13	2.400 ±.010	2.600 ⁺⁰ _{-.016}	60.96 ±0.25	66.04 ⁺⁰ _{-.15}
-1124	-12	2.200 ±.010	2.400 ⁺⁰ _{-.016}	55.88 ±0.25	60.96 ⁺⁰ _{-.15}
-1114	-11	2.000 ±.008	2.200 ⁺⁰ _{-.012}	50.80 ±0.20	55.88 ⁺⁰ _{-.15}
-1104	-10	1.800 ±.008	2.000 ⁺⁰ _{-.008}	45.72 ±0.20	50.80 ⁺⁰ _{-.15}
-1094	-9	1.600 ±.008	1.800 ⁺⁰ _{-.008}	40.64 ±0.20	45.72 ⁺⁰ _{-.15}
-1084	-8	1.400 ±.008	1.600 ⁺⁰ _{-.008}	35.56 ±0.20	40.64 ⁺⁰ _{-.15}
-1074	-7	1.200 ±.008	1.400 ⁺⁰ _{-.008}	30.48 ±0.20	35.56 ⁺⁰ _{-.15}
-1064	-6	1.000 ±.004	1.200 ⁺⁰ _{-.008}	25.40 ±0.10	30.48 ⁺⁰ _{-.15}
-1054	-5	.800 ±.004	1.000 ⁺⁰ _{-.006}	20.32 ±0.10	25.40 ⁺⁰ _{-.15}
-1044	-4	.600 ±.004	.800 ⁺⁰ _{-.006}	15.24 ±0.10	20.32 ⁺⁰ _{-.15}
-1034	-3	.400 ±.004	.600 ⁺⁰ _{-.006}	10.16 ±0.10	15.24 ⁺⁰ _{-.15}
-1024	-2	.200 ±.004	.400 ⁺⁰ _{-.006}	5.08 ±0.10	10.16 ⁺⁰ _{-.15}
10-01-1014	E-3001-1		.200 ⁺⁰ _{-.006}		5.08 ⁺⁰ _{-.15}
PART No.	ENG. No.	ENGLISH		METRIC	
		A	B	A	B

CORRECT TEXT LOC
 EC NO: E2007-0720
 DRWN: DWASZKI EMI CZ 2007/03/28
 CHKD: D. MOR ARTY 2007/03/29
 APPR: DENNEHY 2007/04/04

QUALITY SYMBOLS
 ▽=0
 ▽=0

GENERAL TOLERANCES (UNLESS SPECIFIED)

	mm	INCH
4 PLACES	± ---	± ---
3 PLACES	± ---	±.010
2 PLACES	± 0.25	±.014
1 PLACE	± 0.35	± ---

ANGULAR ±1/2°

DRAFT WHERE APPLICABLE
MUST REMAIN WITHIN DIMENSIONS

DIMENSION STYLE
MM/IN

SCALE
7:1

DESIGN UNITS
METRIC

THIRD ANGLE PROJECTION

DRAWN BY
P. MOORE

DATE
1998/09/15

CHECKED BY
MGOONEY

DATE
1999/03/12

APPROVED BY
MWILHITE

DATE
1999/03/12

TITLE
5.08MM KK CRP TERM HSG

MATERIAL NO.
SEE CHART

DOCUMENT NO.
SDE-3001-N-*

SHEET NO.
1 OF 1

THIS DRAWING CONTAINS INFORMATION THAT IS PROPRIETARY TO MOLEX INCORPORATED AND SHOULD NOT BE USED WITHOUT WRITTEN PERMISSION

PART NO. SEE CHART
 DWG. NO. SDE-3001-N*

VOID CKT. LOCATION	PART No.	ENG. No.	NO OF CKTS.
11	97-00-0919	E-3001-12-11	12
2	NOT TOOLED	E-3001-7-2	7
3	I 10-01-1080	-8-3	8
5	I -3085	-8-5	8
4	I -3044	-4-4	4
3	I -1030	-3-3	3
2	-1049	-4-2	4
2	-1109	-10-2	10
2	-1099	-9-2	9
5	10-01-1069	E-3001-6-5	6

FOR MANUFACTURE IN SINGAPORE ONLY

FOR DIMENSIONS SEE SHEET No.1

REDRAWN ON CAD EC NO. E90109 DRWN: P. MOORE 98/09/19 CHK: / / / APPR: / / / K	DESCRIPTION	QUALITY SYMBOLS MAJOR = CRITICAL = C =	GENERAL TOLERANCES: (UNLESS SPECIFIED)	SCALE :	DESIGN UNITS <input type="checkbox"/> mm <input type="checkbox"/> INCH	DRAWN BY & DATE P. MOORE 98/09/19	TITLE: HOUSING, CONNECTOR, KK (5.08)/.200 CRIMP STYLE TERM.
	REV		mm INCH			CHECKED BY & DATE MGOONEY 12/03/99	MOLEX INCORPORATED MATERIAL NO. SEE CHART DRAWING NO. SDE-3001-N-* SHEET NO. 2 OF B THIS DRAWING CONTAINS INFORMATION THAT IS PROPRIETARY TO MOLEX INCORPORATED AND SHOULD NOT BE USED WITHOUT WRITTEN PERMISSION.
			4 PLACES ±0. ±.			APPROVED BY & DATE MWILHITE 12/03/99	
			3 PLACES ±0. ±.				
		2 PLACES ±0. ±.					
		1 PLACE ±0. ±.					
			ANGULAR: ± 1/2 °	DRAFT WHERE APPLICABLE MUST REMAIN WITHIN DIMENSIONS			

DIMENSIONS: <input checked="" type="checkbox"/> mm <input type="checkbox"/> INCH <input type="checkbox"/> mm ONLY		SHT	REV
THIRD ANGLE PROJECTION			
MATERIAL NO. SEE CHART		DRAWING NO. SDE-3001-N-*	SHEET NO. 2 OF B