

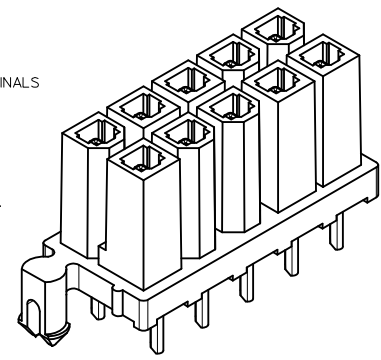
LEGEND:

44475 - * * * *

BASE NUMBER
CIRCUIT SIZE (02-24)
HOUSING MATERIAL (SEE NOTE 1.)
PLATING (SEE NOTE 2.)

NOTES:

- HOUSING MATERIAL:
1 = NYLON 6/6, U.L. 94V-2, COLOR: NATURAL.
2 = NYLON 6/6, U.L. 94V-0, COLOR: NATURAL.
TERMINAL MATERIAL: COPPER ALLOY.
- TERMINAL PLATING:
1 - .000100/(.00254) MIN. MATTE TIN OVER .000050/(.00127) MIN. NICKEL.
2 - .000030/(.00080) MIN. SELECT GOLD, .000100/(.00254) MIN. MATTE TIN OVER .000050/(.00127) MIN. NICKEL OVERALL.
- PRODUCT SPECIFICATION: PS-44476-001.
- PACKAGING SPECIFICATION: PK-42385-999.
- PART MATES WITH MINI-FIT B.M.I. PLUG #42475 WITH 44478 TERMINALS HEADERS #42404, 44068, 43810 AND VERT. HEADER #44474.
- PHANTOM LINES INDICATE AREAS WHERE TERMINAL STANDOFFS CONTACT P.C. BOARD.
- A MAXIMUM TOLERANCE OF .050/(1.27) ALLOWS FOR 2 POINTS OF ELECTRICAL CONTACT. A MAXIMUM TOLERANCE OF .020/(.51) ALLOWS FOR 4 POINTS OF CONTACT.
- .016 IN/IN OR .016 MM/MM MAX. BOW ALLOWABLE AT DATUM -C-.
- RIB MAY NOT BE PRESENT ON ALL PARTS.
- DIMENSION TO BE USED FOR ALIGNMENT OF CIRCUIT #1 OF MATING CONNECTOR
- CONNECTOR ASSEMBLIES ARE NOT TO BE MATED OR UNMATED WHILE CIRCUITS ARE LIVE.
- PARTS NOT DESIGNED FOR CURRENT SHARING.
- ITEM NUMBERS PRECEDED BY AN 'X' IN THE CHARTS ON SHEET 3 ARE NOT AVAILABLE.
- PARTS WILL HAVE 'HCS' MARKING.
- WHEN THIS PRODUCT IS USED IN A BLIND MATING APPLICATION, THE SYSTEM LEVEL DESIGN MUST INCORPORATE GUIDANCE SO THE CONNECTORS ARE WITHIN THE CAPTURE ENVELOPE (UP TO .100/(2.54) MISALIGNMENT) OF THE FLANGES ON THE HEADER OR PLUG HOUSING AND CAN THUS ALIGN THEMSELVES AS THEY COME TOGETHER. FLOAT IS ALSO REQUIRED IN THE OVERALL DESIGN TO ALLOW THE PCB RECEPTACLE OR ITS MATE TO MOVE INTO A STRESS-FREE POSITION AFTER MATING. IN BOARD TO BOARD APPLICATIONS, ONLY ONE HEADER IS ALLOWED PER P.C. BOARD.
- PARTS CONFORM TO CLASS 'B' REQUIREMENTS OF COSMETIC SPECIFICATION PS-45499-002.



CIRCUIT SIZE	DIM. "A"	DIM. "B"	DIM. "C"
2	—	.21 (5.4)	.370 (9.40)
4	.165 (4.20)	.38 (9.6)	.535 (13.60)
6	.331 (8.40)	.54 (13.8)	.701 (17.80)
8	.496 (12.60)	.71 (18.0)	.866 (22.00)
10	.661 (16.80)	.87 (22.2)	1.031 (26.20)
12	.827 (21.00)	1.04 (26.4)	1.197 (30.40)
14	.992 (25.20)	1.20 (30.6)	1.362 (34.60)
16	1.157 (29.40)	1.37 (34.8)	1.528 (38.80)
18	1.323 (33.60)	1.54 (39.0)	1.693 (43.00)
20	1.488 (37.80)	1.70 (43.2)	1.858 (47.20)
22	1.654 (42.00)	1.87 (47.4)	2.024 (51.40)
24	1.819 (46.20)	2.03 (51.6)	2.189 (55.60)

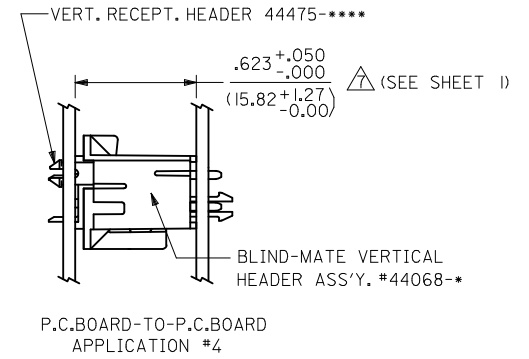
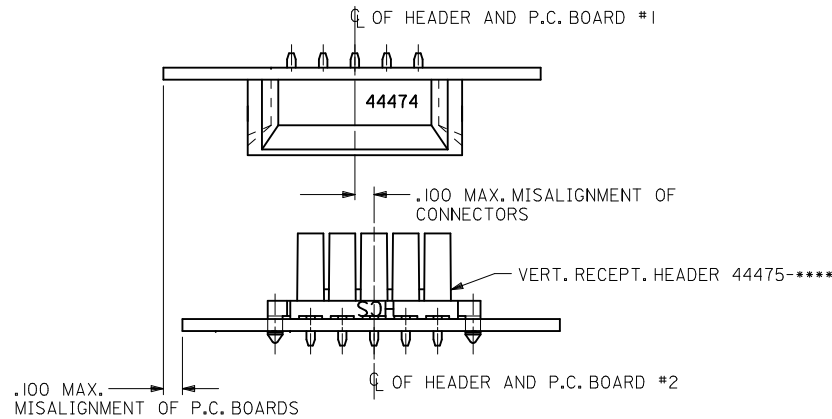
VIEW "A"

REV	DESCRIPTION	QUALITY SYMBOLS
D	CHANGE PLATING EC NO: UCP2012-1560 DRWINHUYEN 2012/01/18 CHKD:JBELL 2012/01/18 APPR:FSMITH 2012/02/02	▽=0 ▽=0 ▽=0

GENERAL TOLERANCES (UNLESS SPECIFIED)		DIMENSION STYLE	
mm	INCH	IN/MM	
4 PLACES ± .010	± .0004	DRAWN BY	DATE
3 PLACES ± .010	± .0004	GEP	1994/08/10
2 PLACES ± 0.25	± .010	CHECKED BY	DATE
1 PLACE ± 0.38	± .015	RJF	1994/08/10
ANGULAR ± 5 °		APPROVED BY	DATE
		FSMITH	2011/10/11
DRAFT WHERE APPLICABLE MUST REMAIN WITHIN DIMENSIONS		MATERIAL NO.	DOCUMENT NO.
		SEE SHEET 3	SDA-44475-****

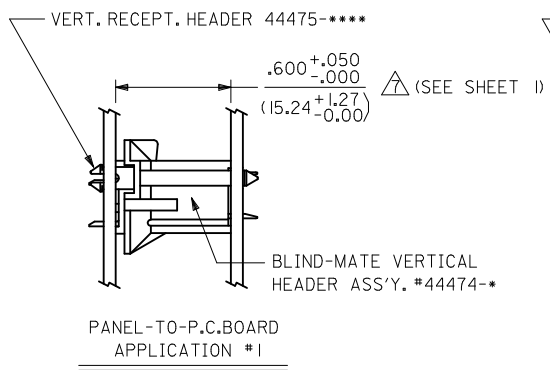
SCALE	DESIGN UNITS	THIRD ANGLE PROJECTION
4:1	METRIC	THIRD ANGLE PROJECTION

VERT HEADER RECEPT ASSY BLIND MATE MINI-FIT HCS SERIES	
MOLEX INCORPORATED	
SHEET NO.	1 OF 3

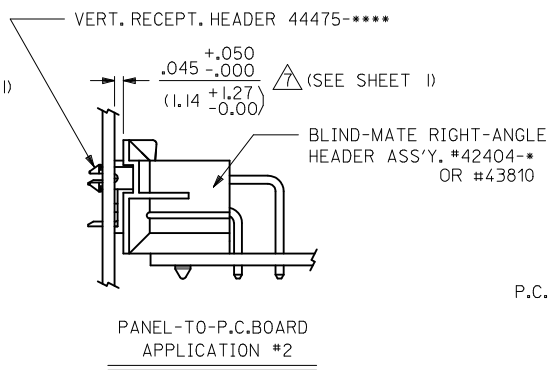


ALIGNMENT TOLERANCES FOR .100 MAX. BOARD-TO-BOARD MISALIGNMENT
(NO CONNECTOR FLOAT)

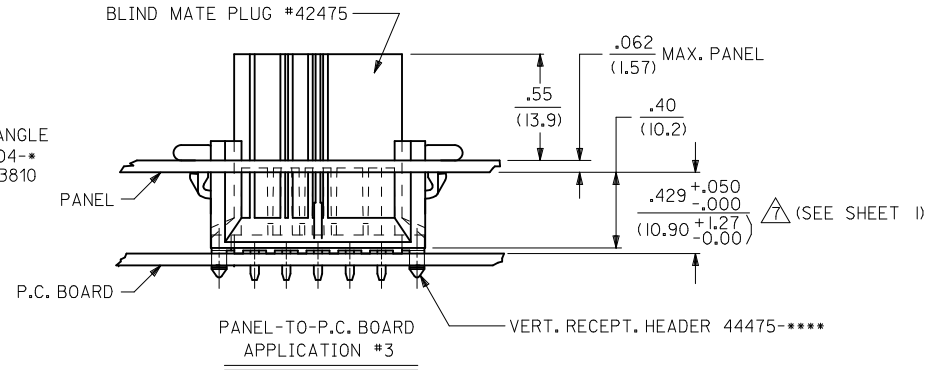
P.C. BOARD-TO-P.C. BOARD APPLICATION #4



PANEL-TO-P.C. BOARD APPLICATION #1



PANEL-TO-P.C. BOARD APPLICATION #2



PANEL-TO-P.C. BOARD APPLICATION #3

SEE NOTE 15

SEE SHEET 1 EC NO: UCP2012-1560 DRW: NGUYEN 2012/01/18 CHKD: BELL 2012/01/18 APPR: FSMITH 2012/02/02	QUALITY SYMBOLS	GENERAL TOLERANCES (UNLESS SPECIFIED)	DIMENSION STYLE	SCALE	DESIGN UNITS	THIRD ANGLE PROJECTION
	▽=0	mm INCH	IN/MM	4:1	METRIC	
	▽=0	4 PLACES ± --- ± ---	DRAWN BY DATE	TITLE	VERT HEADER RECEPT ASSY BLIND MATE MINI-FIT HCS SERIES	
	▽=0	3 PLACES ± --- ± .010	CHECKED BY DATE	MOLEX MOLEX INCORPORATED		
	2 PLACES ± 0.25 ± .015	APPROVED BY DATE	DOCUMENT NO.		SHEET NO.	
	1 PLACE ± 0.38 ± ---	ANGULAR ± 5 °	SEE SHEET 3		SDA-44475-****	2 OF 3
		DRAFT WHERE APPLICABLE MUST REMAIN WITHIN DIMENSIONS	THIS DRAWING CONTAINS INFORMATION THAT IS PROPRIETARY TO MOLEX INCORPORATED AND SHOULD NOT BE USED WITHOUT WRITTEN PERMISSION			

13				12				11				10				9				8				7				6				5				4				3				2				1			
ITEM NUMBER				CKT. SIZE				HOUSING MATERIAL				PLATING (SEE NOTE 2)				ITEM NUMBER				CKT. SIZE				HOUSING MATERIAL				PLATING (SEE NOTE 2)																							
X	44475-0211	2	94V-2	I	X	44475-0222	2	94V-0	2																																										
	↑ -0411	4	↑	↑	X	↑ -0422	4	↑	↑																																										
	-0611	6			X	-0622	6																																												
X	-0811	8			X	-0822	8																																												
	-1011	10			X	-1022	10																																												
X	-1211	12			X	-1222	12																																												
	-1411	14			X	-1422	14																																												
X	-1611	16			X	-1622	16																																												
	-1811	18				-1822	18																																												
X	-2011	20			X	-2022	20																																												
X	↓ -2211	22	↓	↓	X	↓ -2222	22	↓	↓																																										
	44475-2411	24	94V-2	I	X	44475-2422	24	94V-0	2																																										

X	44475-0221	2	94V-0	I
	↑ -0421	4	↑	↑
	-0621	6		
X	-0821	8		
	-1021	10		
X	-1221	12		
	-1421	14		
	-1621	16		
	-1821	18		
X	-2021	20		
X	↓ -2221	22	↓	↓
	44475-2421	24	94V-0	I

ITEM. NO.	CKT. SIZE	HSG. MAT'L.	TERMINAL PLATING REQUIRED AT EACH CIRCUIT LOCATION:																								
			1	2	3	4	5	6	7	8	9	10	11	12	13	14	15	16	17	18	19	20	21	22	23	24	
44475-3000	24	94V-0	1	1	-	1	-	1	-	1	-	1	1	1	1	1	1	-	1	-	1	-	1	-	1	1	1

ITEMS PRECEDED BY "X" ARE NOT AVAILABLE.

SEE SHEET 1 EC NO: UCP2012-1560 DRW: NGUYEN 2012/01/18 CHKD: BELL 2012/01/18 APPR: FSMITH 2012/02/02	QUALITY SYMBOLS	▽=0
		▽=0
		▽=0
		▽=0

GENERAL TOLERANCES (UNLESS SPECIFIED)

	mm	INCH
4 PLACES	± .005	± .0005
3 PLACES	± .005	± .010
2 PLACES	± 0.25	± .015
1 PLACE	± 0.38	± .015

ANGULAR ± 5°

DRAFT WHERE APPLICABLE MUST REMAIN WITHIN DIMENSIONS

DIMENSION STYLE		SCALE	DESIGN UNITS	THIRD ANGLE PROJECTION
IN/MM		1:1	METRIC	
DRAWN BY	DATE	TITLE		
GEP	1994/08/10	VERT HEADER RECEPT ASSY		
CHECKED BY	DATE	BLIND MATE		
RJF	1994/08/10	MINI-FIT HCS SERIES		
APPROVED BY	DATE	MATERIAL NO.		
FSMITH	2011/10/11	SEE CHART		
MATERIAL NO.		DOCUMENT NO.	SHEET NO.	
		SDA-44475-****	3 OF 3	

THIS DRAWING CONTAINS INFORMATION THAT IS PROPRIETARY TO MOLEX INCORPORATED AND SHOULD NOT BE USED WITHOUT WRITTEN PERMISSION