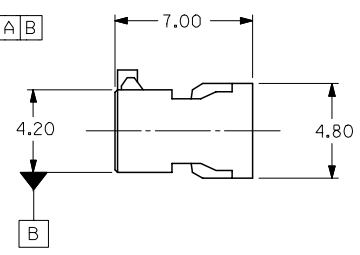
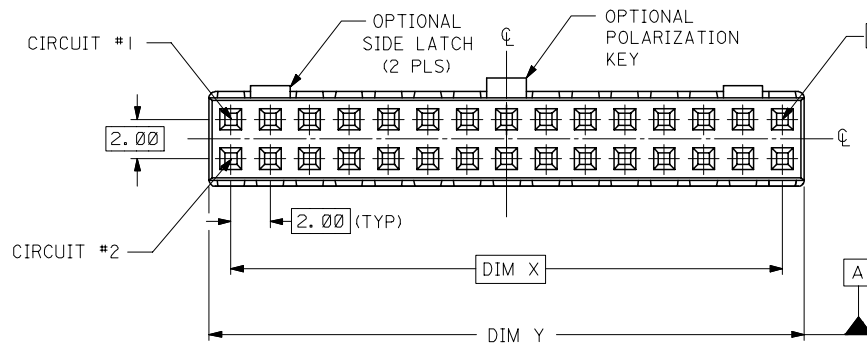
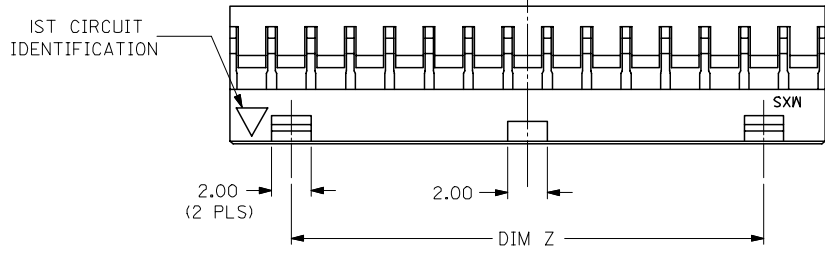


PLS REFER TO PART  
51110-\*\*-60 FOR CENTER  
LATCH OPTION.

| PART NO.   | CKT SIZE | DIM X | DIM Y | DIM Z |
|------------|----------|-------|-------|-------|
| 51110-045* | 4        | 2.00  | 4.20  | NA    |
| 51110-065* | 6        | 4.00  | 6.20  | NA    |
| 51110-085* | 8        | 6.00  | 8.20  | NA    |
| 51110-105* | 10       | 8.00  | 10.20 | NA    |
| 51110-125* | 12       | 10.00 | 12.20 | NA    |
| 51110-145* | 14       | 12.00 | 14.20 | 8.00  |
| 51110-165* | 16       | 14.00 | 16.20 | 10.00 |
| 51110-185* | 18       | 16.00 | 18.20 | 12.00 |
| 51110-205* | 20       | 18.00 | 20.20 | 14.00 |
| 51110-225* | 22       | 20.00 | 22.20 | 16.00 |
| 51110-245* | 24       | 22.00 | 24.20 | 18.00 |
| 51110-265* | 26       | 24.00 | 26.20 | 20.00 |
| 51110-285* | 28       | 26.00 | 28.20 | 22.00 |
| 51110-305* | 30       | 28.00 | 30.20 | 24.00 |
| 51110-325* | 32       | 30.00 | 32.20 | 26.00 |

- NOTES:
1. MATERIAL: GLASS-FILLED POLYESTER UL RATED 94V-0  
COLOR: BLACK
  2. PART TO BE USED WITH CRIMP TERMINAL  
PART NUMBER 50394-8\*\*\*.
  3. APPLICABLE WIRE RANGE: AWG #24 - #30.
  4. WIRE INSULATION RANGE: DIAMETER 1.40MM MAXIMUM.
  5. 30 CKT SHOWN FOR ILLUSTRATION ONLY.



PART NUMBER LEGEND:

51110-\*\*-5\*

CIRCUIT SIZE

0 - WITHOUT CENTER POLARIZATION KEY AND SIDE LATCH.

1 - WITH CENTER POLARIZATION KEY AND SIDE LATCH.  
(14 TO 32 CIRCUITS ONLY)  
WITH CENTER POLARIZATION KEY ONLY.  
(8 TO 12 CIRCUITS ONLY)

| REVISED<br>EC NO: S2008-0233<br>DRWNS:KANG<br>CHKD:ATSEE<br>APPR:MLONG<br>2007/09/20<br>2007/09/20<br>2007/09/21 | DESCRIPTION<br>B4 | QUALITY SYMBOLS   | GENERAL TOLERANCES (UNLESS SPECIFIED)  | DIMENSION STYLE  | SCALE | DESIGN UNITS       | THIRD ANGLE PROJECTION |       |       |          |       |       |          |        |       |         |       |       |         |     |        |  |
|--|-------------------|---|--|--|-------|--------------------|------------------------|-------|-------|----------|-------|-------|----------|--------|-------|---------|-------|-------|---------|-----|--------|--|
|  |                   | $\nabla=0$<br>$\nabla C=0$  | <table border="1"> <thead> <tr> <th></th> <th>mm</th> <th>INCH</th> </tr> </thead> <tbody> <tr><td>4 PLACES</td><td>± ---</td><td>± ---</td></tr> <tr><td>3 PLACES</td><td>± ---</td><td>± ---</td></tr> <tr><td>2 PLACES</td><td>± 0.20</td><td>± ---</td></tr> <tr><td>1 PLACE</td><td>± ---</td><td>± ---</td></tr> </tbody> </table> |  | mm    | INCH               | 4 PLACES               | ± --- | ± --- | 3 PLACES | ± --- | ± --- | 2 PLACES | ± 0.20 | ± --- | 1 PLACE | ± --- | ± --- | MM ONLY | NTS | METRIC |  |
|  |                   |   | mm   | INCH   |       |                    |                        |       |       |          |       |       |          |        |       |         |       |       |         |     |        |  |
|  |                   | 4 PLACES  | ± ---  | ± ---  |       |                    |                        |       |       |          |       |       |          |        |       |         |       |       |         |     |        |  |
| 3 PLACES   | ± ---             | ± ---   |  |  |       |                    |                        |       |       |          |       |       |          |        |       |         |       |       |         |     |        |  |
| 2 PLACES   | ± 0.20            | ± ---   |  |  |       |                    |                        |       |       |          |       |       |          |        |       |         |       |       |         |     |        |  |
| 1 PLACE  | ± ---             | ± ---   |  |  |       |                    |                        |       |       |          |       |       |          |        |       |         |       |       |         |     |        |  |
| DRAFT WHERE APPLICABLE MUST REMAIN WITHIN DIMENSIONS   | SEE TABLE         | DRAWN BY SKTOH<br>CHECKED BY EDPOH<br>APPROVED BY JMCHAN<br>DATE 1993/10/26<br>DATE 1993/10/26<br>DATE 1993/10/26 | TITLE  | 2MM GRID, WIRE TO BOARD CONNECTOR, CRIMP RECEPT. HOUSING |       | MOLEX INCORPORATED |                        |       |       |          |       |       |          |        |       |         |       |       |         |     |        |  |
|  |                   | MATERIAL NO.  | DOCUMENT NO.   | SD-51110-**-5*   |       |                    | SHEET NO.<br>1 OF 1    |       |       |          |       |       |          |        |       |         |       |       |         |     |        |  |