

Raw Data

IP68

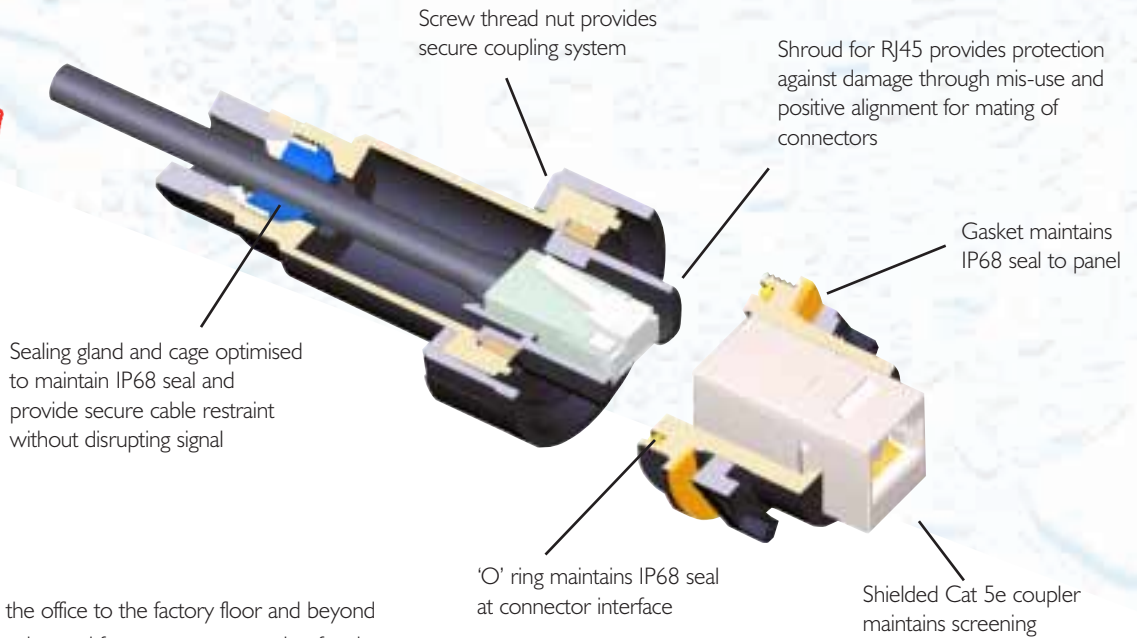


Ethernet Buccaneer® environmentally sealed connectors

B **BULGIN**

Ethernet Buccaneer®

IP68



With Ethernet extending from the office to the factory floor and beyond into external environments, the demand for a secure connection for data applications is dramatically increasing.

This system is based upon the tried and tested Standard Buccaneer connector. It offers a secure connection for Ethernet based networks running up to 100Mbps, using the industry standard RJ45 connector as the base connection.

The system uses shielded connectors and couplers with S-FTP stranded cable to provide a high level of noise immunity.

Patchcords have been independently tested to TIA/ EIA Cat 5e levels.

FEATURES AND BENEFITS

Compatible with standard shielded RJ45 components.

Protection for RJ45 interface against contact damage/wear due to mechanical vibration.

- IP68 rated
 - Cat 5e compliant
 - PE jacket on cable
 - Shielded system
 - Cat 5e shielded coupler
 - Shroud on RJ45
 - Screw coupling
 - Re-wireable version
 - Earth lead
- ▷ Dust and water sealing
 - ▷ Data rate up to 100MHz
 - ▷ Good chemical and water resistance
 - ▷ High noise immunity and EMI protection
 - ▷ Maintains shielding
 - ▷ Protection from abuse and mis-mating
 - ▷ Secure, proven locking system
 - ▷ Ability to 'field' terminate
 - ▷ Maintains shielding of panel mount connector



PART NUMBERS

Re-wireable flex connectors

- PX0834/A Glanding optimised for use with PE Jacket cable to maintain Cat 5e performance
- PX0834/B Suitable for use with cables of diameter from 3.5 to 8mm dia

Patch cord flex connectors

- | | | | |
|-------------|--------------|----|-------------------------------|
| PX0830/2M00 | Wire end | 2m | RJ Buccaneer to bare end |
| PX0830/3M00 | Wire end | 3m | RJ Buccaneer to bare end |
| PX0830/5M00 | Wire end | 5m | RJ Buccaneer to bare end |
| PX0831/2M00 | Single ended | 2m | RJ Buccaneer to Shielded RJ45 |
| PX0831/3M00 | Single ended | 3m | RJ Buccaneer to Shielded RJ45 |
| PX0831/5M00 | Single ended | 5m | RJ Buccaneer to Shielded RJ45 |
| PX0832/2M00 | Double ended | 2m | RJ Buccaneer to RJ Buccaneer |
| PX0832/3M00 | Double ended | 3m | RJ Buccaneer to RJ Buccaneer |
| PX0832/5M00 | Double ended | 5m | RJ Buccaneer to RJ Buccaneer |

Panel mounting connectors

- PX0833 Cat 5e Coupler
- PX0833/E Cat 5e Coupler + earth wire

Accessories

- PX0835 Sealing Cap for flex connectors
- PX0733 Sealing Cap for panel mounting connector
- I4151 Hand crimp tooling + die set
- I4152 PE Jacket Cable - 50m reels
- I4150 Replacement shielded RJ45

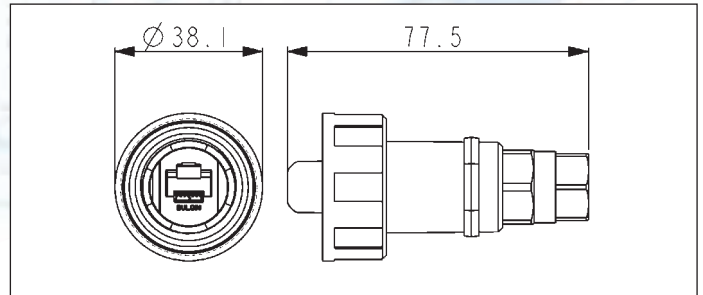
Ethernet Buccaneer®



RE-WIREABLE FLEX CONNECTOR



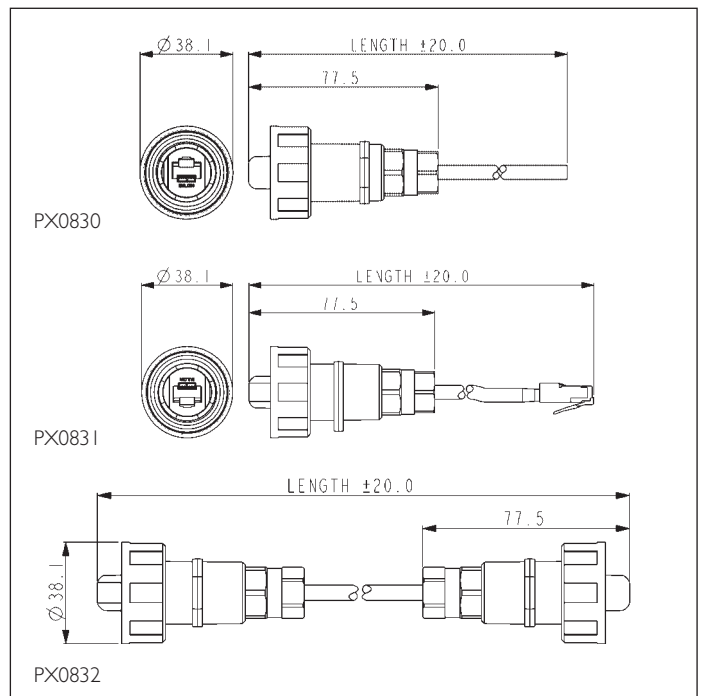
- Re-wireable flex cable connector
- Supplied with shielded RJ45 plug
- Two versions:
 - for use with PE Jacket cable (Cat 5e)
 - for use with other cable sizes from 3.5 to 8mm dia.
- Mates with panel mounting connector



PATCH CORD FLEX CONNECTOR



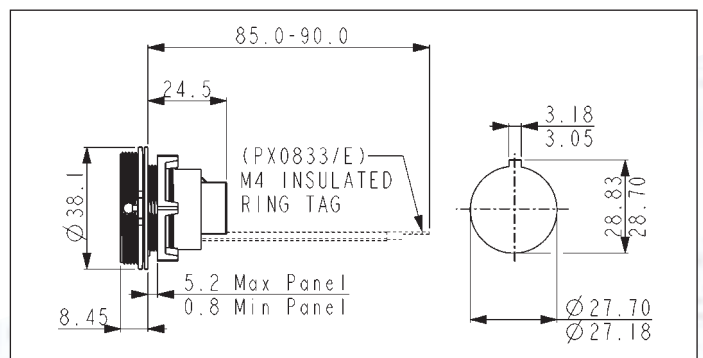
- Patchcords with IP68 connector
- Supplied with shielded RJ45 plug
- Single or double end terminated
- Standard lengths; 2m, 3m & 5m
- Mates with panel mounting connector
- S-FTP cable construction
- PE Jacket cable
- Wiring configuration to 568-B
- Exceeds EIA/TIA Cat 5e



PANEL MOUNTING CONNECTOR



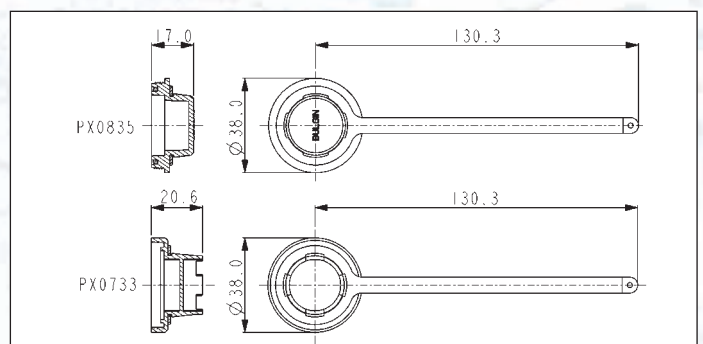
- Cat 5e shielded coupler
- For use with IP68 flex connectors
- Standard patchcord can be plugged into rear
- Version with earth wire available
- Single hole fixing
- Complete with panel sealing gasket



ACCESSORIES



- Sealing caps to maintain IP68 rating when connectors are not in use
- Replacement shielded RJ45's
- Hand crimp tool for shielded RJ45
- Patch cord cable available in 50m reels



Ethernet Buccaneer[®] Connector

TECHNICAL SPECIFICATION

Stranded S-FTP Patch cord cable - PE Jacket

A cable with internal construction exceeding Cat 5e performance levels. Designed to cope with the rigours that applications in external environments demand. Its outer sheath provides good levels of resistance to water, oils and chemicals, will not crack with prolonged exposure to water or UV, and provides good abrasion resistance.

Construction

Conductors	26AWG 7/0.16mm bare copper
Insulation	Polyolefin (0.94mm nominal)
Pair	2 of the above cores twisted
Core	4 of the above cores
Tape	1 lap of PEPT Tape
Screen	1 layer of PEPT and aluminium tape
0.1mm Tinned copper braid	
Sheath	PE Jacket Black
Operating Temperature	-25°C +60°C
Min. bend radius	8 x o/d (installation)
Min. bend radius	4 x o/d (installed)
Diameter	5.6mm nominal

Electrical @ 20°C

Characteristic Capacitance	100Ω ± 1.5Ω @ 4MHz - 100MHz
Operating capacity	1600pF/km
Conductor Loop resistance	29Ω/100m maximum
Skew	40 nsec/100m @ 100MHz
Smoke index	IEC 61034
Acid Gas Emissions	IEC 60754
TIA/EIA Rating	Cat 5e

Flex & Panel mounted connectors

Mechanical

Sealing	IP68, EN60529
---------	---------------

Materials

Connector Body	Glass filled Polyamide
Flammability rating	UL94-V0
'O' rings	Neoprene
Panel Gasket	Silicon
Operating Temperature	-20°C to +70°C

RJ45 Plug

Materials

Moulding	Polycarbonate
Flammability	UL94V-0
Contact material	Phosphor Bronze
Contact plating	50 micron gold
Operating Temperature	-40°C to +70°C
Mating cycles	1,000 cycles
Electrical	
No. Conductors	8
Current rating	30V ac, 42V dc
Voltage rating	1.5A
Contact resistance	10mΩ max.
Performance	Cat 5 EIA/TIA 2840, annex B specification

RJ45 Coupler

Materials

Coupler Shell	Copper Alloy
Coupler Plating	Nickel
Moulding	ABS
Flammability	UL94V-0
Contact material	Phosphor Bronze
Contact plating	50 micron gold
Operating Temperature	-40°C to +70°C
Mating cycles	1,000 cycles
Electrical	
No. Conductors	8
Current rating	30V ac, 42V dc
Voltage rating	1.5A
Contact resistance	10mΩ max.
Performance	Cat 5 EIA/TIA 2840, annex B specification