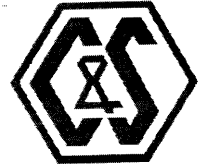


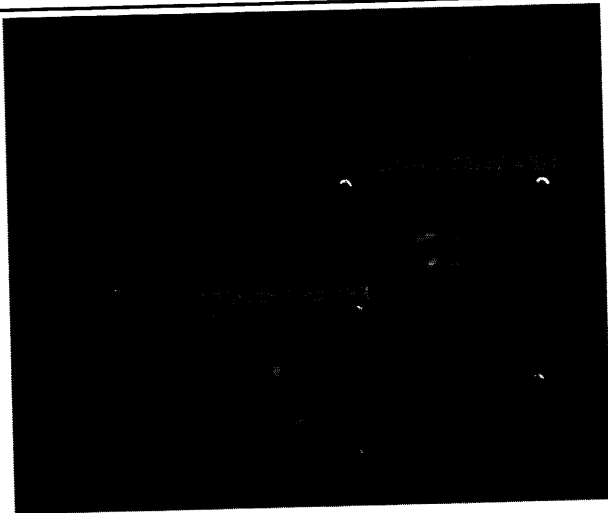


Clifford & Snell



Intrinsically Safe Sounders

YO3 - YO4 - YO5

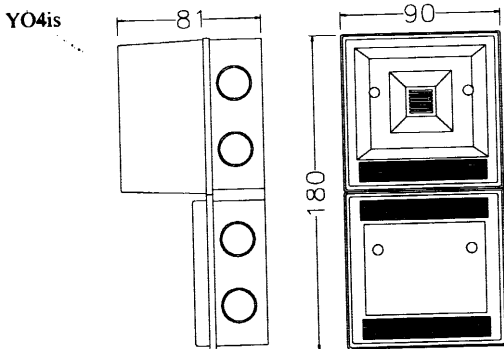


YO4is YO3is YO5is

Main Features

- BASEEFA approved
- 2 stage alarm
- Rugged construction
- 32 selectable tones meeting international regulations
- Compact one piece design
- Complies with BS5839 Pt1 : 1980
- Meets PFEER & UKOOA requirements
- Enclosure made from ABS flame retardant plastic (YO3/5)
Enclosure made from ABS flame or non flame retardant plastic (YO4)
- Monitoring facility
- High sound output
- Stainless steel fixings
- Continuously rated
- Sound selection via DIL switch

Dimensions (mm)



Mounting: Via Internal fixing Holes

Technical Specification

- Relative humidity 95% @ 40deg C
- For use in zones 0,1,2
- IP55 - YO3/4
- IP56 - YO5
- Volume control T4 only
- Operating voltage 12Vdc, 18V or 24Vdc via barriers
- Sound output YO3/4 100dB(A) @ 1 mtr
YO5 105dB(A) @ 1 mtr
- European models ISC & ISD
Application notes WD 9261
- Operating temp -25deg C to +40deg C
- EEx.ia IIC, T4 and T6
- Voltage upper limit controlled by barrier
- Minimum current consumption 20mA

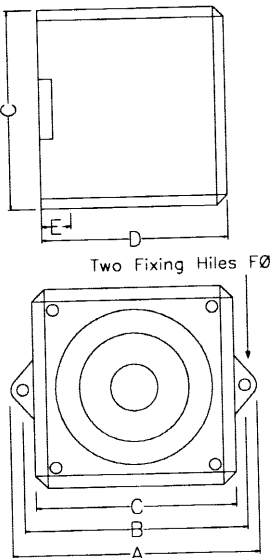
YO3is YO5is

Dimensions (mm)

	YO3is	YO5is
Dim A	118	169
Dim B	102	153
Dim C	89	134
Dim D	85	128
Dim E	18	23
Dim F	6	8

M20 Cable Mounting hole at Dim E

Mounting: Via External fixing Lugs



Two Fixing Holes FØ

All dimensions quoted are approximate only and subject to change without notice as are technical features resulting from continual development and improvement



YO4is

YO5is

T4 only

Intrinsically Safe Sounders

YO3-YO4-YO5

First Stage Signal	Freq.	Sound switches					Rep Rate (sec.)	Special application
		1	2	3	4	5		
1 Alternate two-tone	800-1000	1	1	1	1	1	0.5	Fire alarms
2 Alternate two-tone	2500-3100	0	1	1	1	1	0.5	Security alarms
3 Alternate fast two-tone	800-1000	1	0	1	1	1	0.25	Increased urgency
4 Alternate fast wo-tone	2500-3100	0	0	1	1	1	0.25	Security deterrent
5 Alternate two-tone	440-554	1	1	0	1	1	0.4/0.1	AFNOR, FRANCE
6 Alternate two-tone	430-470	0	1	0	1	1	1.0	
7 Alternate v.fast two-tone	800-1000	1	0	0	1	1	0.13	
8 Alternate v.fast two-tone	2500-3200	0	0	0	1	1	0.07	
9 Alternate two-tone	440-554	1	1	1	0	1	2.0	Turn-out, SWEDEN
10 Continuous note	700	0	1	1	0	1	-	All-clear, SWEDEN
11 Continuous note	1000	1	0	1	0	1	-	
12 Continuous note	1000	0	0	1	0	1	-	
13 Continuous note	2300	1	1	0	0	1	-	
14 Continuous note	440	0	1	0	0	1	-	
15 Interrupted tone	1000	1	0	0	0	1	2.0	
16 Interrupted tone	420	0	0	0	0	1	1.25	AS2220, AUSTRALIA
17 Interrupted tone	1000	1	1	1	1	0	0.5	
18 Interrupted tone	2500	0	1	1	1	0	0.25	
19 Interrupted tone	2500	1	0	1	1	0	0.5	
20 Interrupted tone	700	0	0	1	1	0	6/12	Pre-vitalmessage SWEDEN
21 Interrupted tone	1000	1	1	0	1	0	1.0	
22 Interrupted tone	700	0	1	0	1	0	4.0	Air-raid alarm, SWEDEN
23 Interrupted tone	700	1	0	0	1	0	0.25	Local warning, SWEDEN
24 Interrupted tone	720	0	0	0	1	0	0.7/0.3	Industrial alarm, GERMANY
25 Int,fast, rising volume	1400	1	1	1	0	0	0.25	
26 Fast siren	250-1200	0	1	1	0	0	0.085	
27 Rising constant, fall	1000	1	0	1	0	0	10/40/10	
28 ISO 8201 Evacuation	800-1000	0	0	1	0	0	As std	Industrial alarm, GERMANY
29 Fast whoop	500-1000	1	1	0	0	0	0.15	Int'l evacuation alarm
30 Slow whoop	500-1200	0	1	0	0	0	4.5	Evacuation, The Netherlands
31 Reverse sweep	1200-500	1	0	0	0	0	1.0	Evacuation, GERMANY
32 Siren	500-1200	0	0	0	0	0	3.0	

The PFEER sound signals recommended by UKOOA are:-

General Alarm Sound Signal 15
PAPA Sound Signal 31
Toxic Gas Sound Signal 11

Interrupted tone 1000 Hz
Reverse Sweep 1200-500 Hz
Continuous Tone 1000 Hz.

Approval Specification

European Standards

BASEEFA Cert No. EX 87B2163

BS conformity BS5501 Pt1 EN 50014, Pt7 EN 50020, Pt9 EN50039

Intrinsically Safe Sounders YO3-YO4-YO5

How To Order

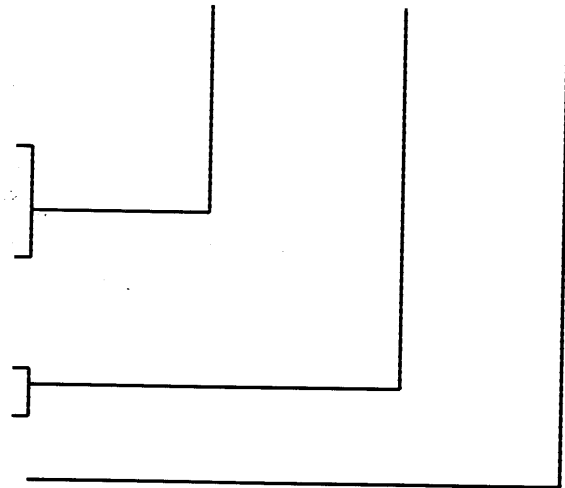
Intrinsically Safe Sounders

Sounder Type	YO3	YA30			
Sounder Type	YO4	YA40			
Sounder Type	YO5	YA50			

• System Type

European Approved Barriers
(See application notes)

ISC



Clifford & Snell



A Division of Signature Industries

Tom Cribb Road, Thamesmead,
London SE28 0BH

Tele: 44 (0) 208 3171717

Fax: 44 (0) 208 3172400

Web Site: www.signatureindustries.com

Email: cliffordandsnell@aol.com