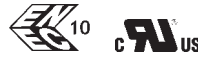
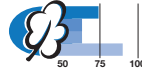


**Power entry module Type DC11**


- Panel mount:
  - screw-on version, front or rear-side
  - snap-in version, front-side
- Appliance inlet with line switch 1- or 2 pole



**Characteristics**

- All single elements are already wired
- Unwired versions available on request
- Line switch non-illuminated or illuminated
- Qualified for use in equipment according to IEC/EN 60950

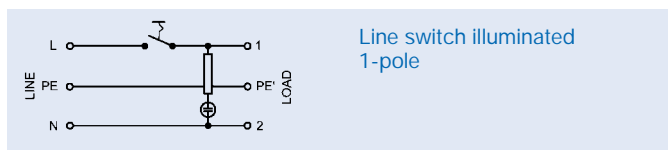
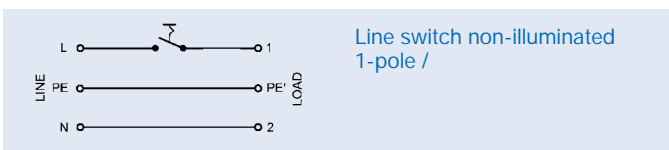
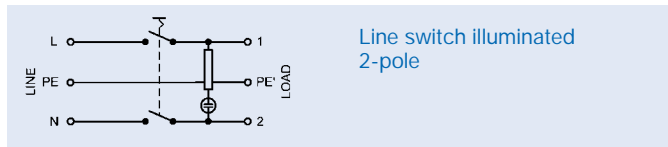
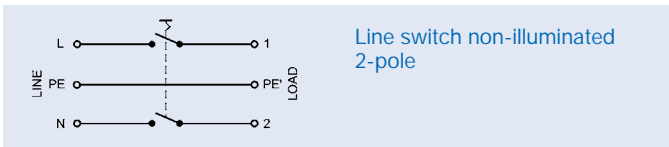
**Technical data**

Rated voltage	125-250 VAC
Rated current	10 A/250V VDE 12A/125-250V UL/CSA
Dielectric strength (50 Hz, 1 Min.)	> 2,5 kV between L-N > 3 kV between L/N-PE
Allowable ambient air temperatures T <sub>a</sub>	-25 °C to +70 °C
Degree of protection (fr.s))	IP40 acc. to IEC 60529
Protection class	suitable for equipment with prot. cl. I, acc. to IEC 61140
Terminals	Quick-connect 4,8 x 0,8 mm
Panel thickness s	screw-on: max. 6 mm snap-in: 1,0/1,5/2,0/2,5/3,0 mm
Materials: Housing	Thermoplastic, black, UL94 V-2
Appliance-inlet	 acc. to IEC/EN 60320-1/C14, Protection class I, pin-temperature 70 °C (cold condition)

**DC11, 12 Switch**

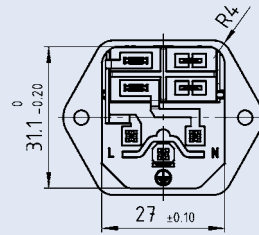
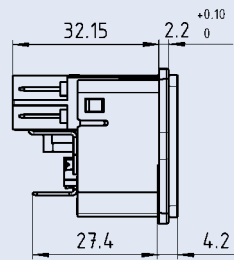
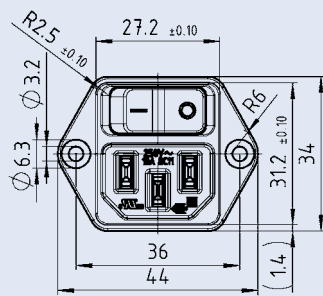
Line switch switch)	1- or 2-pole, non-illuminated or (Rocker illuminated), acc. to IEC/EN 61058-1 Technical details see page 200
---------------------	---

**Diagrams**

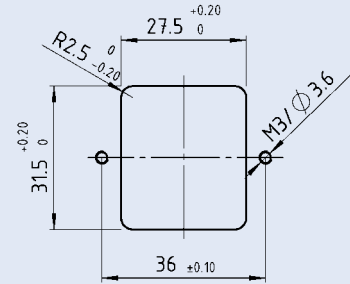


Dimensions

Screw-on mounting

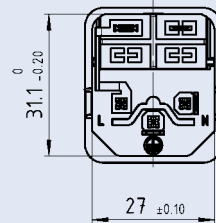
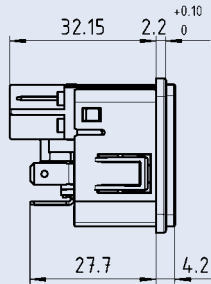
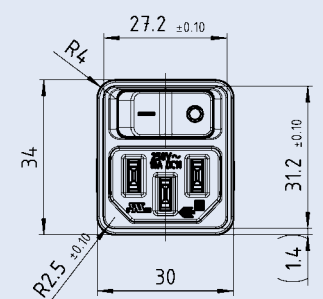


Panel cut-out

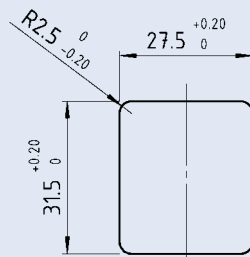


Mounting screw torque 0,5 Nm

Snap-in mounting



Panel cut-out



Order Numbers socket (with internal connections)

	Protection class	Pole configuration		Line switch			Screw	Snap-in, panel-thickness s		
		1-pole	2-pole	non-illuminated / illuminated	illuminated 125/250 VAC, red	illuminated 125/250 VAC, green		1,5 mm	2,0 mm	2,5 mm
DC11.0001.003	I	•		•			•			
DC11.0001.203	I	•		•				•		
DC11.0001.303	I	•		•					•	
DC11.0001.403	I	•		•						•
DC11.0021.003	I	•			•		•			
DC11.0021.203	I	•			•			•		
DC11.0021.303	I	•			•				•	
DC11.0021.403	I	•			•					•
DC11.0031.003	I	•				•	•			
DC11.0031.203	I	•				•		•		
DC11.0031.303	I	•				•			•	
DC11.0031.403	I	•				•				•
DC11.0001.001	I		•	•			•			
DC11.0001.201	I		•	•				•		
DC11.0001.301	I		•	•					•	
DC11.0001.401	I		•	•						•
DC11.0021.001	I		•		•		•			
DC11.0021.201	I		•		•			•		
DC11.0021.301	I		•		•				•	
DC11.0021.401	I		•		•					•
DC11.0031.001	I		•			•	•			
DC11.0031.201	I		•			•		•		
DC11.0031.301	I		•			•			•	
DC11.0031.401	I		•			•				•

Other versions on request:

- for protection class II
- line switch with other rocker marking
- unwired versions
- illuminated yellow
- Solder terminals
- Snap-in, Panel tickness 1 and 3 mm

Accessoires see page 171