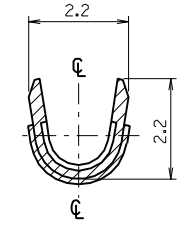
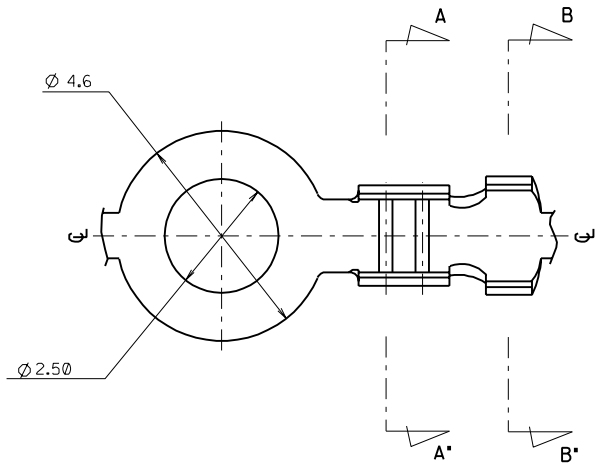
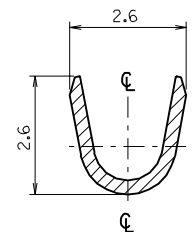


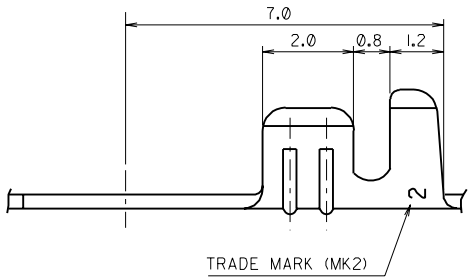
DO NOT SCALE DRAWING
 DIMENSION IN METRIC
 PROJECT NO.
 SIMILAR ITEM
 EDP NO.
 ENG. NO. SD 35750-03-0



SECTION: A-A*



SECTION: B-B*



NOTES

1. MATERIAL: BRASS 0.3 THICKNESS
2. FINISH: 35750-0300:NONE
 35750-0310:POST-TIN PLATING
 35723-0104:TIN LEAD PLATING
3. RECOMMENDED LENGTH OF WIRE STRIP IS 2.9-3.6

LTR		REVISION RECORD	ECN	DR/CHK	DATE	DIE FEED	APPL FEED	WBDW	IBDW	APP'D BY	SCALE	CAD (10:1)	ENG.NO.	SD 35750-03-0	REV C
C	REVISED		YANG	92.4.30	---	---	---	---	---	---	---	---	---	---	---
B	REVISED		YANG	91.12.3	---	---	---	---	---	---	---	---	---	---	---
A	CAD DRAWING RELEASED		YANG	91.11.1	---	---	---	---	---	---	---	---	---	---	---
ASS'Y PART		QTY/REEL OR PACK	SURFACE AREA		MATERIAL		SEE NOTE		WIRE RANGE		GENERAL TOLERANCES		MOLEX MOLEX-KOREA CO.,LTD.		
DESCRIPTION		ENG.NO.	30,000 Q'TY /REEL		--- MM ²		DIMENSION CLASSIFICATION		AWG: #28-#24		DIM. ±0.3		REVISE ONLY ON CAD SYSTEM		
			DIE NO. ---		LAYOUT NO. ---		<input checked="" type="checkbox"/> : CRITICAL <input checked="" type="checkbox"/> : MAJOR <input type="checkbox"/> : MINOR () : REFERENCE		MM ² :		ANGLE ±0.2		TITLE: Ø 2.5 RING TERMINAL		
			WIRE CRIMP WIDTH		INS. CRIMP WIDTH		DRAWN BY W.Y.YANG		INSULATION RANGE		CHK'D BY B.K.CHOI		10F 1		
			---		---		APP'D BY		SCALE		CAD (10:1)		ENG.NO. SD 35750-03-0		