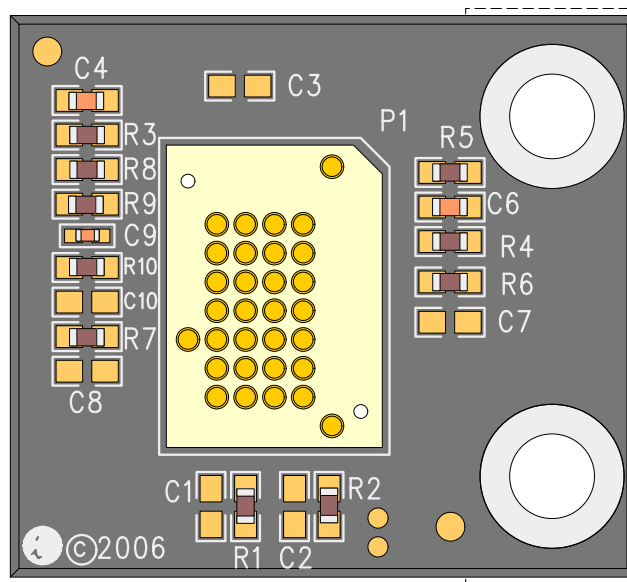
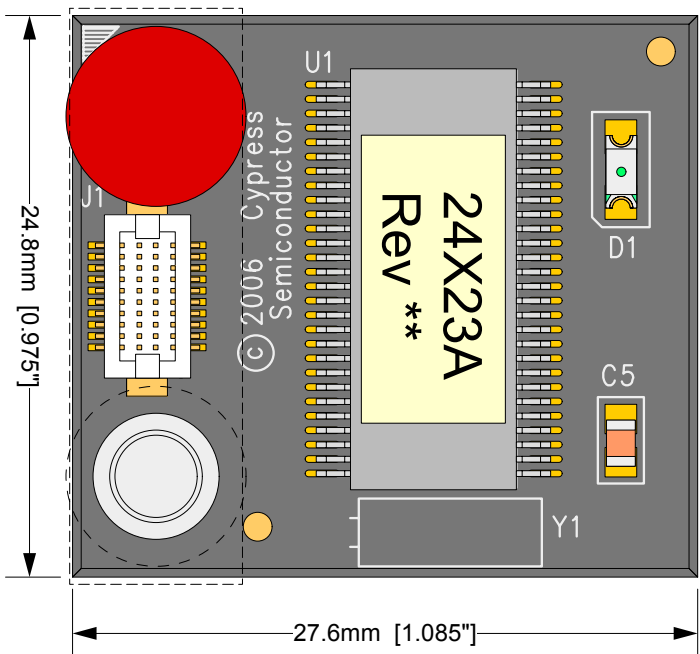
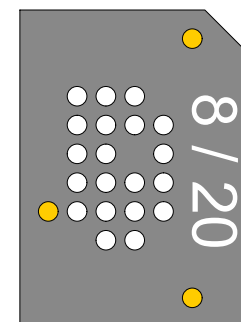


PROPRIETARY INFORMATION:

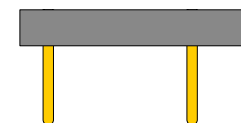
Information contained in this drawing is confidential. Copying, distributing or use in any matter, other than that specified by IRONWOOD ELECTRONICS, INC., is strictly prohibited and may be unlawful. If you have received this drawing in error, please destroy or return to IRONWOOD ELECTRONICS, INC. at the address listed below.



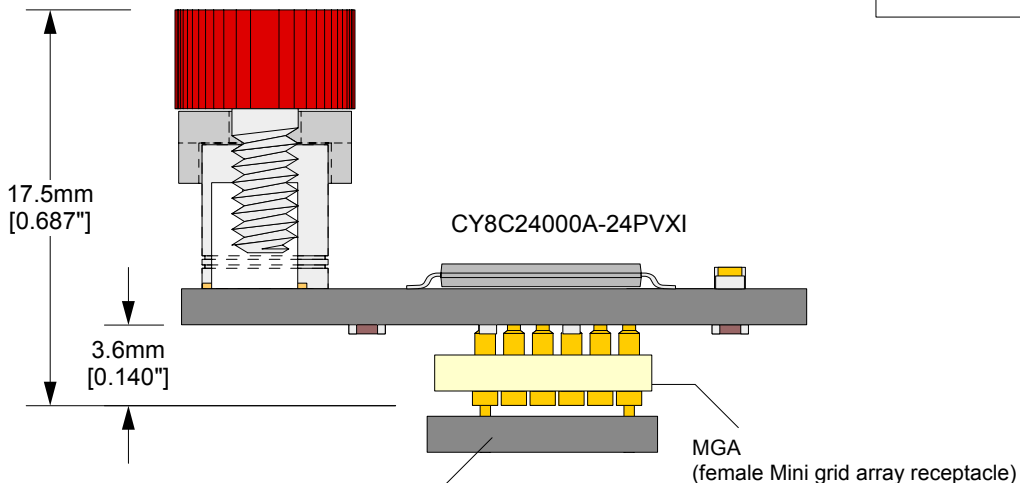
**Foot alignment Mask
(plugs onto MGA)**



C4253
(for 8 & 20 pin feet)




RoHS COMPLIANT



Alignment mask, required for 8 and 20 pin feet

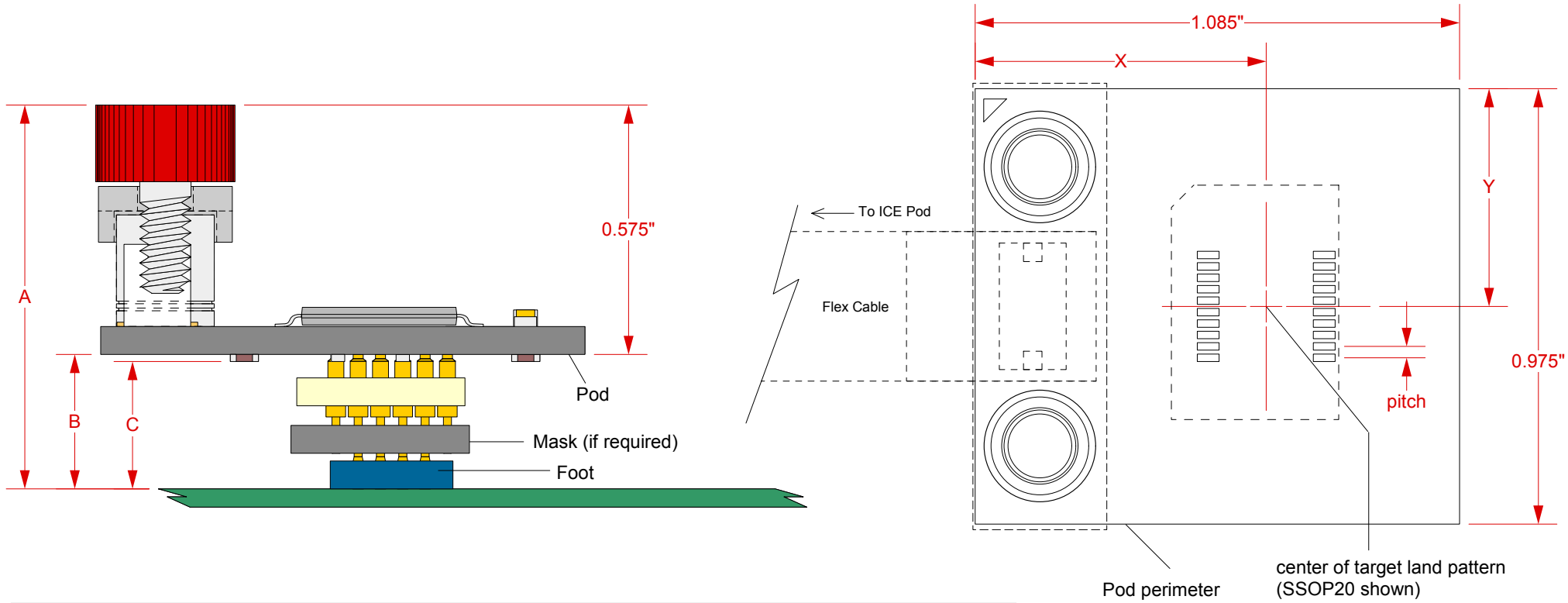
Description: **CY3250-24X23AQFN POD**
 SSOP56 OCD (CY8C24000A-24PVX1).
 Hirose cable connector with retention mechanism included.
 Compatible with:
 XT-PSoC-15-20H-10-01 - Flex cable (to ICE cube)
 Compatible with the following Non-QFN feet:
 C4102 - PDIP8
 C5116 - SOIC8
 C3845 - SSOP20 foot
 C3848 - SOIC20 foot
 C4103 - PDIP20 foot
 C3846 - SSOP28 foot
 C3849 - SOIC28 foot
 C4104 - PDIP28 foot

Page: 1 of 2


	EA-8C24000A-NQ-01 Drawing © 2006 IRONWOOD ELECTRONICS, INC. PO BOX21151 ST. PAUL, MN 55121 Tele: (651) 452-8100 www.ironwoodelectronics.com	Status:	Scale: <u>3:1</u>	Rev: C
		Drawing: M. Tully	Date: 7/24/06	
		File: EA-8C24000A-NQ-01 Dwg	Modified: 10/5/06, MT	

Tolerances: diameters $\pm 0.03\text{mm}$ [± 0.001 "],
 PCB perimeters $\pm 0.13\text{mm}$ [± 0.005 "],
 PCB thicknesses $\pm 0.18\text{mm}$ [± 0.007 "],
 pitches (from true position) $\pm 0.08\text{mm}$ [± 0.003 "],
 all other tolerances $\pm 0.13\text{mm}$ [± 0.005 "]
 unless stated otherwise. Materials and specifications are subject to change without notice.

POD clearance, with respect to center of target pattern



Foot Part number	Description	Pitch	Mask required	A	B	C	X	Y
C5116	SOIC8 foot	0.050"	yes	0.865"	0.290"	0.265"	0.654"	0.538"
C4102	PDIP8 foot	0.100"	yes	0.978"	0.403"	0.377"	0.652"	0.488"
C3845	SSOP20 foot	0.65mm	yes	0.865"	0.290"	0.265"	0.654"	0.488"
C3848	SOIC20 foot	0.050"	yes	0.865"	0.290"	0.265"	0.652"	0.488"
C4103	PDIP20 foot	0.100"	yes	0.978"	0.403"	0.377"	0.652"	0.488"
C3846	SSOP28 foot	0.65mm	no	0.848"	0.273"	0.248"	0.652"	0.513"
C3849	SOIC28 foot	0.050"	no	0.848"	0.273"	0.248"	0.652"	0.513"
C4104	PDIP28 foot	0.100"	no	0.978"	0.403"	0.377"	0.652"	0.513"

	EA-8C24000A-NQ-01 Drawing © 2006 IRONWOOD ELECTRONICS, INC. PO BOX21151 ST. PAUL, MN 55121 Tele: (651) 452-8100 www.ironwoodelectronics.com	Status:	Scale: <u>3:1</u>	Rev: C
		Drawing: M. Tully	Date: 7/24/06	
		File: EA-8C24000A-NQ-01 Dwg	Modified: 10/5/06, MT	

Tolerances: diameters ±0.03mm [±0.001"],
 PCB perimeters ±0.13mm [±0.005"],
 PCB thicknesses ±0.18mm [±0.007"],
 pitches (from true position) ±0.08mm [±0.003"],
 all other tolerances ±0.13mm [±0.005"]
 unless stated otherwise. Materials and specifications are subject to change without notice.