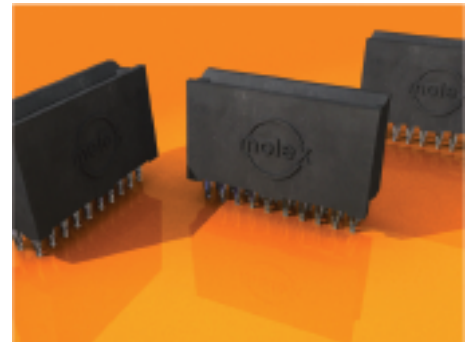


FEATURES AND SPECIFICATIONS



12.90mm (.508") Pitch Power Edge™ Power Connector

45714 Vertical Assembly, Press-Fit Tails 45719 Vertical Assembly, Solder Tails



High Current Connector For Direct Mating To Card Edge PCB Or Bus Bar Tabs for Power Applications Up To 40.0A

Power Edge is a high current connector for direct mating to a customer's 1.58mm (.062") thick, double-sided card edge PCB or bus bar tab. Power Edge connectors can be combined (stacked end-to-end) to mate with multiple bus bar tabs or card edges up to 8.00" (203.20mm) for power distribution applications.

The Power Edge contact incorporates proven Molex design elements of high performance Copper Alloy and

Gold plating, with redundant interface points for optimum mating with double-sided card edge contacts. The Power Edge contact is rated for currents up to 40.0A, offering a 25% higher current rating compared to competing connectors. The additional current provides the customer with an increased power or safety factor for their application. Power Edge uses the same PCB footprint and is end-to-end stackable with competing products.

Features and Benefits

- Connector assemblies available in two, three and four segments (two contacts per segment) provide greater flexibility for power distribution applications
- End-to-end stackable segments provide greater flexibility for card edge requirements up to 203.20mm (8.00") in length
- 40.0A current rating per contact for high current requirements, 25% more current per contact than competing headers
- Isolated segments on opposing contacts provide option for different power voltage levels on either side of the board; for example, ground return on one side and power return on the other side
- Press-fit or solder tail terminations are compatible with standard PCB's or Backplanes
- Rated for current interruption matches true hot-plugging capabilities
- Compatible with competitive connector allows drop-in replacement

SPECIFICATIONS

Reference Information

Packaging: Tray
UL File No.: E29179
CSA File No.: Pending
TUV File No.: Pending
Mates With: Customer's .062" Thick Card Edge or Bus Bar Tab
Designed In: Millimeters

Electrical

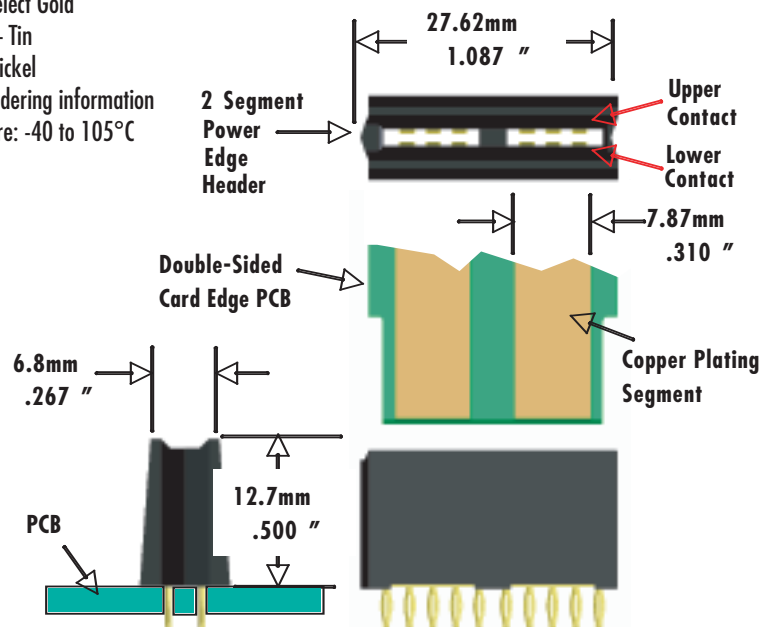
Voltage: 250V
Current: 40.0A per contact
Contact Resistance: 1 mΩ max.
Dielectric Withstanding Voltage: 1500VDC
Insulation Resistance: 5000 MΩ min.

Mechanical

Mating Force:
2 segment assembly – 22.2N
3 segment assembly – 26.7N
4 segment assembly – 35.6N
Unmating Force:
2 segment assembly – 12.3N
3 segment assembly – 22.2N
4 segment assembly – 31.1N
Durability: 200 mating cycles

Physical

Housing: 30% Glass Filled LCP
Contact: Copper Alloy
Plating:
Contact Area – Select Gold
Solder Tail Area – Tin
Underplating – Nickel
PCB Thickness: See ordering information
Operating Temperature: -40 to 105°C



APPLICATIONS

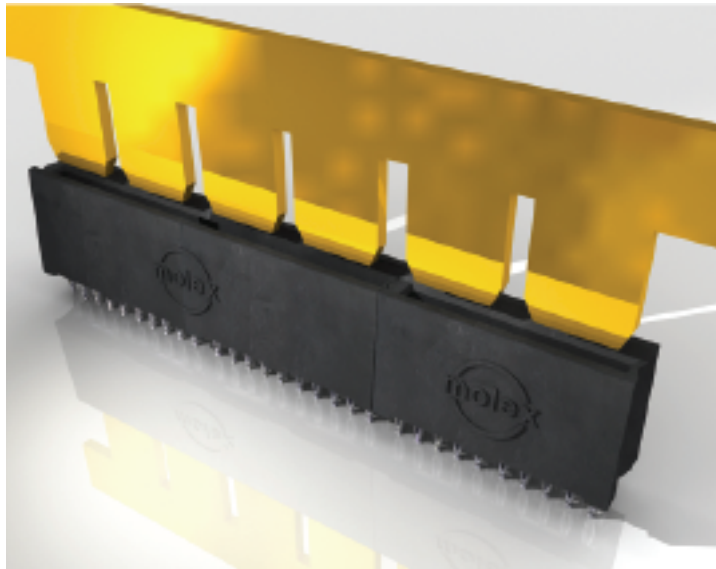


12.90mm (.508") Pitch Power Edge™ Power Connector

- Telecommunications Equipment
 - Networking Hubs
 - Switches
 - Routers
- High and Mid-Range Computing Equipment
- Un-interruptible Power Supplies (UPS)
- Cellular Communications Equipment
 - Base Stations
- DC-DC Converters

**45714 Vertical Assembly,
Press-Fit Tails**

**45719 Vertical Assembly,
Solder Tails**



Power Edge Connectors Mating to Bus Bar Tabs

ORDERING INFORMATION

Order No.	Segments	PCB Termination Type	PCB Thickness
45714-0001	2	Press Fit (Compliant Pin)	.093" (2.36mm) or Greater
45714-0002	3	Press Fit (Compliant Pin)	.093" (2.36mm) or Greater
45714-0003	4	Press Fit (Compliant Pin)	.093" (2.36mm) or Greater
45719-0001	2	Through Hole Solder Tails	.125" (3.18mm) Max.
45719-0002	3	Through Hole Solder Tails	.125" (3.18mm) Max.
45719-0003	4	Through Hole Solder Tails	.125" (3.18mm) Max.
45719-0004	2	Through Hole Solder Tails	.093" (2.36mm) Max.
45719-0005	3	Through Hole Solder Tails	.093" (2.36mm) Max.
45719-0006	4	Through Hole Solder Tails	.093" (2.36mm) Max.
45719-0007	2	Through Hole Solder Tails	.062" (1.57mm) Max.
45719-0008	3	Through Hole Solder Tails	.062" (1.57mm) Max.
45719-0009	4	Through Hole Solder Tails	.062" (1.57mm) Max.

Americas Headquarters
Lisle, Illinois 60532 U.S.A.
1-800-78MOLEX
amerinfo@molex.com

Far East North Headquarters
Yamato, Kanagawa, Japan
81-462-65-2324
feninfo@molex.com

Far East South Headquarters
Jurong, Singapore
65-6-268-6868
fesinfo@molex.com

European Headquarters
Munich, Germany
49-89-413092-0
eurinfo@molex.com

Corporate Headquarters
2222 Wellington Ct.
Lisle, IL 60532 U.S.A.
630-969-4550
Fax:630-969-1352

Visit our Web site at http://www.molex.com/product/power/power_edge.html