

SURFBOARDS®



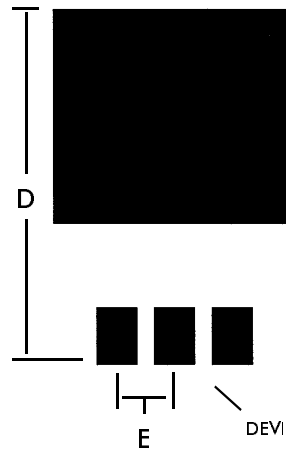
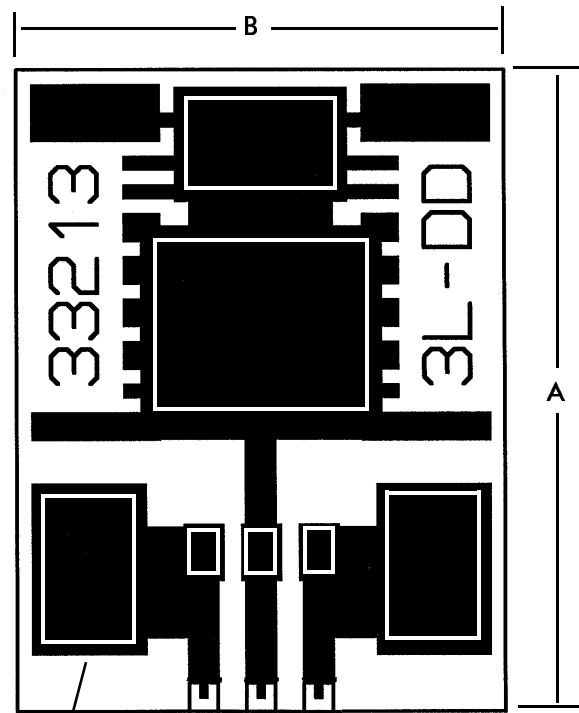
THE BREADBOARDING MEDIUM FOR SURFACE MOUNT™

APPLICATION SPECIFIC ADAPTERS

IDS33213 3-9-99

MODEL **33213**

FOR **TO-263AB**
3-LEAD D PACKAGE
 HIGHER CURRENT APPLICATIONS



PINS PROVIDE INSTRUMENT CONNECTION POINTS. LARGE LANDS CAN BE CLIPPED ONTO OR SOLDERED TO FOR HIGHER CURRENT APPLICATIONS.

DEVICE MOUNTING FOOTPRINT

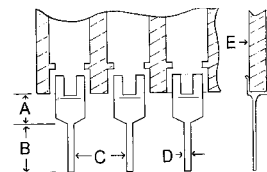
LARGE CIRCUIT LANDS PROVIDE CLIP TO, OR SOLDER TO CONNECTION POINTS FOR HIGHER CURRENT APPLICATIONS

SINGLE-IN-LINE (SIP) PINS PROVIDE INSTRUMENTATION CONNECTIONS

NOTE: CIRCUIT FOILS OR PINS MAY NOT BE SUITABLE FOR HIGHER RATED CURRENT OPERATION. EXTREME TEMPERATURE RISE MAY CAUSE FAILURE.

FIG.	INCHES	MM
A	1.125	28.57
B	.850	21.59
C	.100	2.54
D	.625	15.87
E	.100	2.54

PIN SPECIFICATIONS / TOLERANCES



In Inches

A =	.062 ± .006
B =	.130 ± .010
C =	.100 ± .005
D =	.020 ± .004
E =	.031 ± .005

BOARD SPECIFICATIONS

BOARD MATERIAL: .031 ± .005 in. Thick G-10 FR-4 Glass Epoxy or equivalent.

CIRCUITS: 1oz Copper with solder coated pads.

TOLERANCES: Given in inches
 Board Size ± .020 / OAL ± .040
 Circuit pattern/position ± .005

Copyright 1997, 1999 by Capital Advanced Technologies, Inc. All rights reserved. Surfboards Are a registered trademark of Capital Advanced technologies, Inc. All other trademarks or registered trademarks are property of their respective owners. Availability, specifications, and prices are subject to change without notice. All information given is believed to be accurate but is not guaranteed. The user of information given or products represented by such information is responsible for determining the suitability of said information or products for a given purpose.

CAPITAL ADVANCED TECHNOLOGIES, INC.

CAROL STREAM, ILLINOIS, USA.

PHONE 630-690-1696 WWW.CapitalAdvanced.Com FAX-ON-DEMAND 630-690-2865