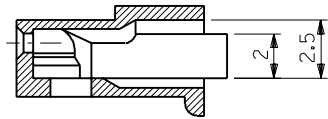
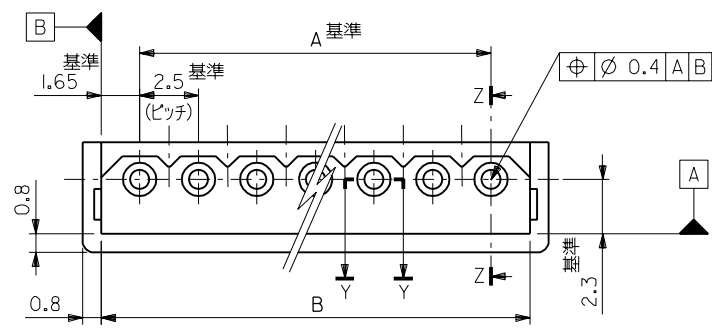
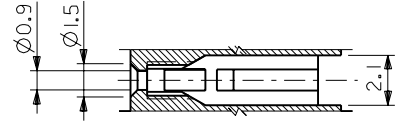


EDP NO. 50-37-5\*\*3  
 ENG. NO. SD-5264-N  
 DIMENSIONS IN METRIC DO NOT SCALE DRAWING

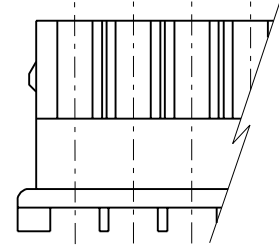
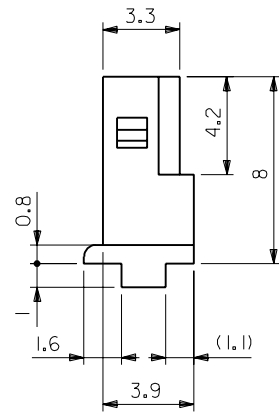
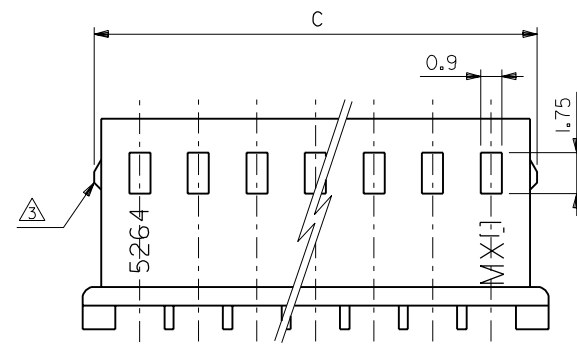


断面 Z-Z

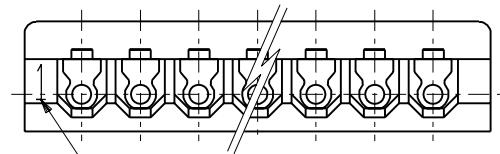


断面 Y-Y

注記:  
 1. 適合端子: 5263PBT  
 2. 嵌合相手: 5267 シリーズ, 5268 シリーズ  
 3. 9極以上はロックなし。



	38.3	35	50-37-5153	5264-15	15	
	35.8	32.5	-5143	-14	14	
	33.3	30	-5133	-13	13	
	30.8	27.5	-5123	-12	12	
	28.3	25	-5113	-11	11	
	25.8	22.5	-5103	-10	10	
	23.3	20	-5093	-09	9	
	21.4	20.8	17.5	-5083	-08	8
	18.9	18.3	15	-5073	-07	7
	16.4	15.8	12.5	-5063	-06	6
	13.9	13.3	10	-5053	-05	5
	11.4	10.8	7.5	-5043	-04	4
	8.9	8.3	5	-5033	-03	3
	6.4	5.8	2.5	50-37-5023	5264-02	2
C	B	A	EDP NO.	ENG. NO.	極数	



CIRCUIT NO.

角度 ANGLE	±3°				
30以上 OVER	+0.3				
10以上 30未滿 UNDER	+0.25	H	再作図及び変更	U10590	K.J
10未滿 UNDER	+0.2	記号 LTR	変更内容	DR. CHK.	DATE
一般公差 GENERAL TOLERANCES		REVISE ONLY ON CAD SYSTEM			

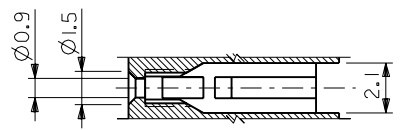
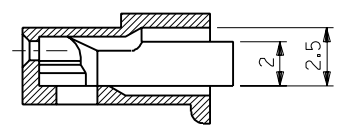
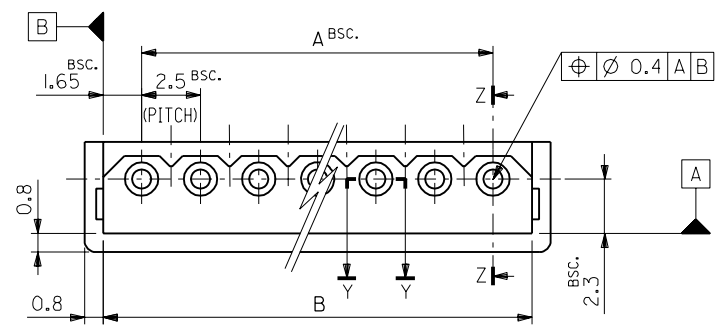
材料 MATERIAL	66ナイロン UL94V-0	MOLEX JAPAN CO., LTD. 日本モレックス株式会社
仕上げ FINISH	—	
適用電線範囲 WIRE RANGE	—	EDP. NO. 50-37-5**3
被覆外径 INS. RANGE	—	ENG. NO. SD-5264-N
DRAWN BY K.TOJO '91/7/26	CHK'D BY '91/07/30 M.FUKUSHIMA	TITLE 名称 2.5 LOW PROFILE RECEPTACLE HOUSING
APP'D BY '91/07/30 M.ENOMOTO	尺 度 SCALE 5-1	REV H

THIS DRAWING CONTAINS INFORMATION THAT IS PROPRIETARY TO MOLEX(JAPAN) AND SHOULD NOT BE USED WITHOUT WRITTEN PERMISSION  
 本図面は日本モレックス(株)の所有する情報を含むもので 当社の許可なく複製を禁止する。

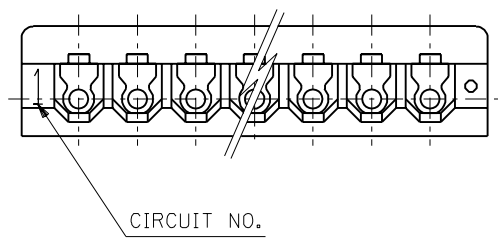
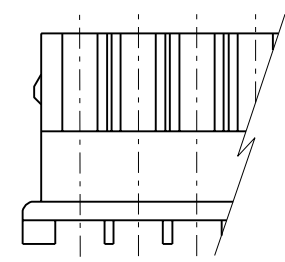
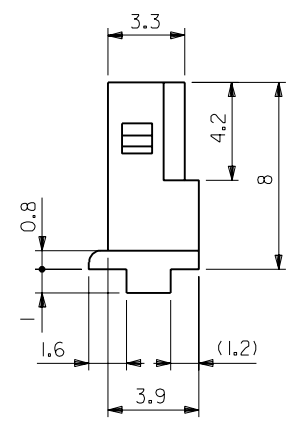
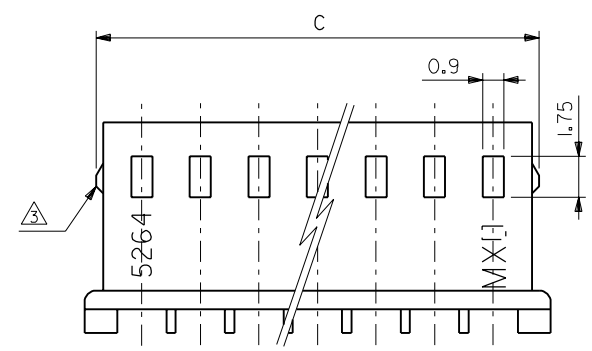
MXJ-8

5264-530

EDP NO. 50-37-5\*\*3      ENG. NO. SD-5264-N  
 :MM DIMENSIONS IN METRIC DO NOT SCALE DRAWING



NOTES:  
 1. SUITABLE TERMINAL : 5263SERIES  
 2. MATES WITH : 5267SERIES,5268SERIES  
 ③ 9 CIRCUITS OR MORE WITHOUT LOOK.



	50.8	47.5	50-37-5203	5264-20	20	
	48.3	45	-5193	-19	19	
	45.8	42.5	-5183	-18	18	
	43.3	40	-5173	-17	17	
	40.8	37.5	-5163	-16	16	
	38.3	35	-5153	-15	15	
	35.8	32.5	-5143	-14	14	
	33.3	30	-5133	-13	13	
	30.8	27.5	-5123	-12	12	
	28.3	25	-5113	-11	11	
	25.8	22.5	-5103	-10	10	
	23.3	20	-5093	-09	9	
	21.4	20.8	17.5	-5083	-08	8
	18.9	18.3	15	-5073	-07	7
	16.4	15.8	12.5	-5063	-06	6
	13.9	13.3	10	-5053	-05	5
	11.4	10.8	7.5	-5043	-04	4
	8.9	8.3	5	-5033	-03	3
	6.4	5.8	2.5	50-37-5023	5264-02	2
	C	B	A	EDP NO.	ENG.NO.	CKT.

角度 ANGLE    +3° 30 以上 OVER    +0.3 10 以上 30 未満 UNDER    +0.25 10 未満 UNDER    +0.2 一般公差 GENERAL TOLERANCES		H REVISD & REDRAWN (1105910) 記号 LTR    変更内容 REVISION RECORD    DR. CHK.    日付 DATE		材料 MATERIAL 66NYLON,UL94V-0 仕上げ FINISH    //    適用電線範囲 WIRE RANGE    //    被覆外径 INS. RANGE    //    材料 MOLEX-JAPAN CO.,LTD. 日本モレックス株式会社 EDP. NO. 50-37-5**3 ENG. NO. SD-5264-N    REV H TITLE 名称 2,5 LOW PROFILE RECEPTACLE HOUSING DRAWN BY K.TOJO '91/11/5    CHK'D BY '92/01/5 MFK KUSHIMA APP'D BY '92/01/5 M.ENOMOTO    尺度 SCALE 5-1	
REVISE ONLY ON CAD SYSTEM				THIS DRAWING CONTAINS INFORMATION THAT IS PROPRIETARY TO MOLEX(JAPAN) AND SHOULD NOT BE USED WITHOUT WRITTEN PERMISSION 本図面は日本モレックス(株)の所有する情報を含むので 当社の許可なく複製を禁止する。	