

PCB: PDCR-9312 REV\*A  
 PCA: 121R-31200 REV\*A

<b>CYPRESS SEMICONDUCTOR © 2005</b>		
Title CY8C24000 28 PDIP Module		
Size B	Document Number REF-13447	Rev **
Date: Monday, May 22, 2006	Sheet 1	of 1

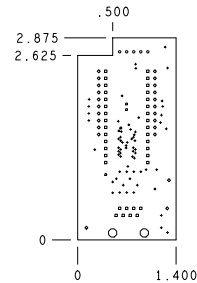
4

3

2

1

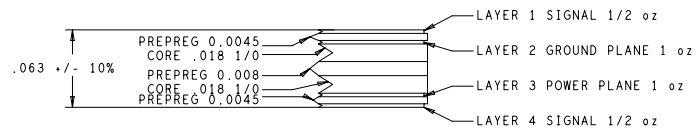
REVISIONS			
REV	DESCRIPTION	DATE	APPROVED
**	RELEASE FOR MANUFACTURING	03/20/06	DFK



DRILL CHART				
ALL UNITS ARE IN MILS				
FIGURE	SIZE	TOLERANCE	PLATED	QTY
*	10.0	0.003 ±0.010	PLATED	65
*	20.0	0.003	PLATED	4
*	35.0	0.003	PLATED	36
*	40.0	0.003	PLATED	5
*	43.0	0.003	PLATED	23
○	128.0	0.003	NON-PLATED	2

NOTES: UNLESS OTHERWISE SPECIFIED

- MATERIAL:
  - EPOXY GLASS LAMINATE AND PREPREG, TYPE FR-4.
  - USE HTE COPPER 1/2 oz. COPPER FOIL EXTERNAL LAYERS AND 1 oz. COPPER FOIL FOR INTERNAL LAYERS, UNLESS OTHERWISE SPECIFIED IN STACK VIEW.
  - OVERALL METAL TO METAL THICKNESS .063 +/- 10%
- DRILLING:
  - DIAMETERS IN DRILL TABLE ARE FINISHED HOLE SIZES +/- .003. UNLESS OTHERWISE SPECIFIED IN DRILL TABLE.
  - TEARDROP ALLOWED ON ENTRY OF VIA ON EVERY TRACE LAYER.
- PLATING:
  - COPPER PLATING IN THRU-HOLES .001 min.
- MARKING:
  - SILKSCREEN IN WHITE NON-CONDUCTIVE EPOXY INK ON PRIMARY SIDE OF THE BOARD OR BOTH SIDES IF APPLICABLE.
  - FABRICATOR TO ETCH DATE CODE AND LOGO ON SECONDARY SIDE.
- FINAL FABRICATION:
  - SOLDERMASK PRIMARY AND SECONDARY SIDE OF BOARD USING LIQUID PHOTOIMAGABLE MASK MATERIAL OVER BARE COPPER PER IPC-SM-840. MASK ARTWORKS PROVIDED ARE 1:1 SOLDERMASK COLOR \*\*GREEN\*\*.
- WHEN REQUIRED, COPPER FINISH SHALL BE FINISHED TIN-LEAD (60-40 MIN) HASL.
- BOARDS SHALL BE PURCHASED FROM UL RECOGNIZED VENDORS ONLY AND SHALL BE MARKED IN COPPER ON SECONDARY SIDE OF BOARD WITH VENDORS UL IDENTIFICATION. FLAMABILITY RATING (94-V0), AND DATE CODE (WYYY).
- MANUFACTURE BOARD TO BE IN ACCORDANCE WITH PERFORMANCE STANDARD IPC-6011/6012 CLASS 2 BOARD TO BE INSPECTED PER IPC-600-A CLASS 2.
- MAXIMUM WRAP OR TWIST SHALL NOT EXCEED .010 in/in.



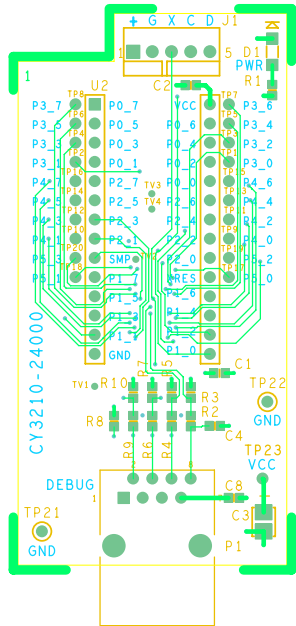
UNLESS OTHERWISE SPECIFIED DIMENSIONS ARE IN INCHES TOLERANCES ON: ANGLES +/- 2° 2 PL DECIMALS +/- .010 3 PL DECIMALS +/- .005 THIRD ANGLE PROJECTIONS	SIGNATURES	DATE	12230 World Trade Drive #200 San Diego, CA 92128 (858) 613-7931
	DRAWN ZMK	03/13/06	
	CHECKED ECU	03/20/06	
	ENGRG DFK	03/20/06	
	ISSUED		
CYPRESS PROPRIETARY THIS DOCUMENT CONTAINS CONFIDENTIAL, PROPRIETARY INFORMATION THAT IS CYPRESS SEMICONDUCTOR PROPERTY. DO NOT DISCLOSE TO OR REPLICATE FOR OTHERS EXCEPT AS AUTHORIZED BY CYPRESS.			FABRICATION DRAWING CY3210-24000 POD MODULE DESIGN
SIZE C	FSCM NO	DWG NO PDC-9312	REV **
SCALE: 1/1		SHEET: 1 OF 1	

4

3

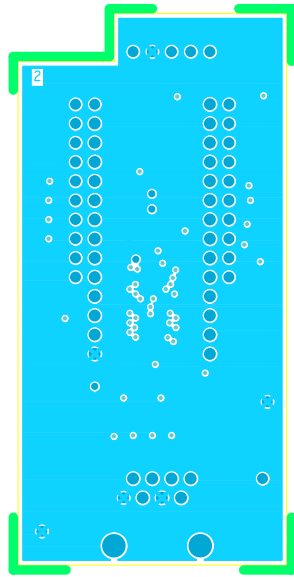
2

1

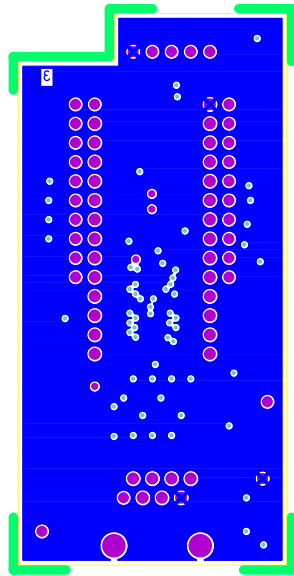


PDC-9312 REV \*\* PRIMARY SIDE

PDC-9312 REV \*\* PRIMARY SILKSCREEN



PDC-9312 REV\*\* LAYER 2 GND



PDC-9312 REV\*\* LAYER 3 VCC

PDC-031S REV \*\* SECONDARY SILKSCREEN  
PDC-031S REV \*\* SECONDARY SIDE

