

MATERIALS AND FINISHES

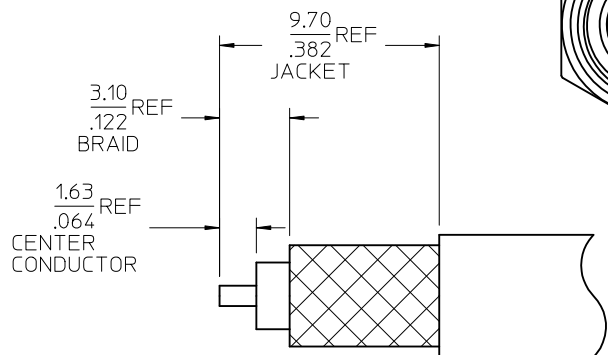
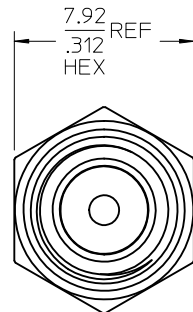
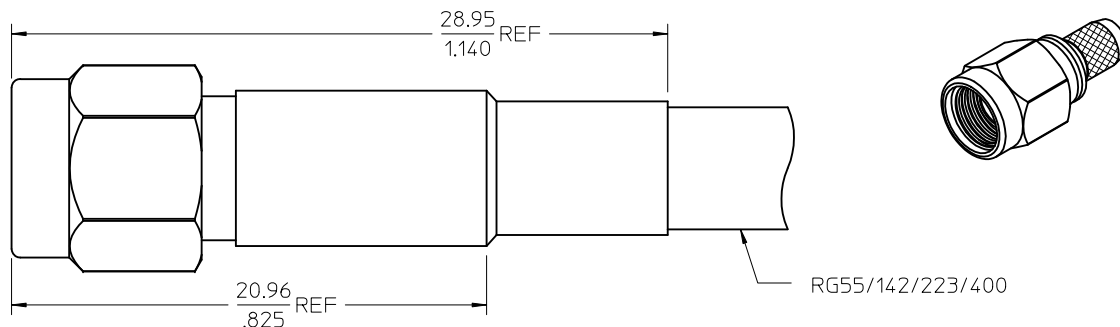
BODY AND COUPLING NUT STAINLESS STEEL
PASSIVATED

CENTER CONTACT BRASS
PLATED GOLD

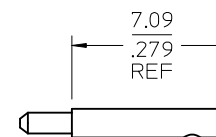
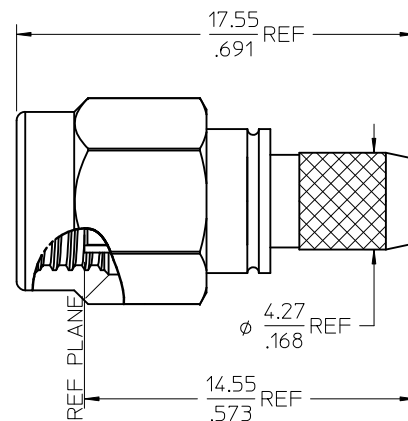
INSULATOR TEFLON

CRIMP TUBE BRASS
PLATED NICKEL

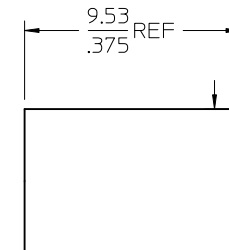
SHRINK TUBE VERSIFIT OR EQUIVALENT



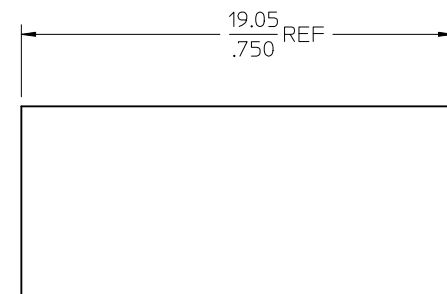
RECOMMENDED STRIP DIMENSIONS
CRIMP USING .213 HEX



CONTACT



CRIMP TUBE
Ø 6.35 REF
.250



SHRINK TUBE

73251-0112	ONE PIECE 73251-0111 PER BAG
73251-0111	BULK
PART NO.	PACKAGING

ES-89675-1570	CABLE ASSY INSTRUCT.
MIL-STD-348A, FIG. 310.1	INTERFACE
SPECIFICATION	DESCRIPTION

CHG: CLARIFIED 1 PC PER BAG. EC NO: URF2010-0369 DRW: ARROBERTSON 2009/12/18 CHK: D:SSS 2009/12/18 APPR: JWENNER 2009/12/18	QUALITY SYMBOLS ▽=0 ▽=0	GENERAL TOLERANCES (UNLESS SPECIFIED) <table border="1"> <tr> <th></th> <th>mm</th> <th>INCH</th> </tr> <tr> <td>4 PLACES</td> <td>± .005</td> <td>± .0004</td> </tr> <tr> <td>3 PLACES</td> <td>± .005</td> <td>± .0004</td> </tr> <tr> <td>2 PLACES</td> <td>± .005</td> <td>± .0004</td> </tr> <tr> <td>1 PLACE</td> <td>± .005</td> <td>± .0004</td> </tr> </table> ANGULAR ± 2 °		mm	INCH	4 PLACES	± .005	± .0004	3 PLACES	± .005	± .0004	2 PLACES	± .005	± .0004	1 PLACE	± .005	± .0004	DIMENSION STYLE MM/IN	SCALE METRIC	DESIGN UNITS THIRD ANGLE PROJECTION
		mm	INCH																	
4 PLACES	± .005	± .0004																		
3 PLACES	± .005	± .0004																		
2 PLACES	± .005	± .0004																		
1 PLACE	± .005	± .0004																		
DRAWN BY: GMH DATE: 1997/11/07 CHECKED BY: DHG DATE: 1998/01/05 APPROVED BY: GMH DATE: 1997/01/06	TITLE SMA PLUG, STR, CRIMP TYPE FOR RG55/142/223/400 SMA-PC		MATERIAL NO. SEE TABLE		DOCUMENT NO. SD-73251-011															
DRAFT WHERE APPLICABLE MUST REMAIN WITHIN DIMENSIONS			SIZE C	THIS DRAWING CONTAINS INFORMATION THAT IS PROPRIETARY TO MOLEX INCORPORATED AND SHOULD NOT BE USED WITHOUT WRITTEN PERMISSION																