

DO NOT SCALE FROM THIS PRINT

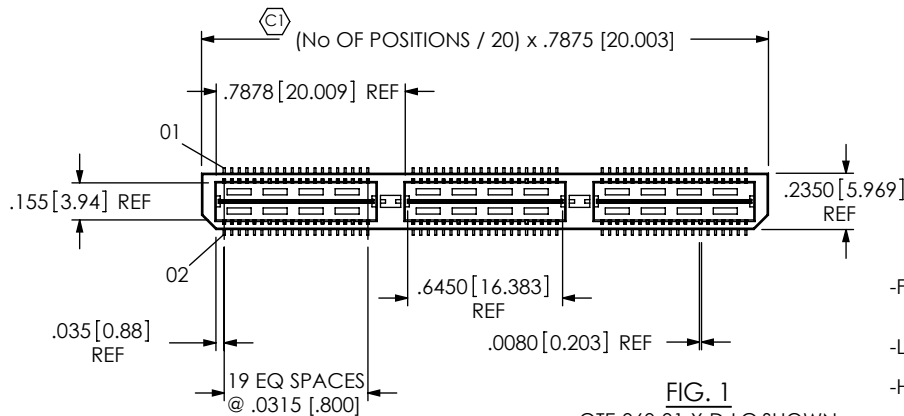
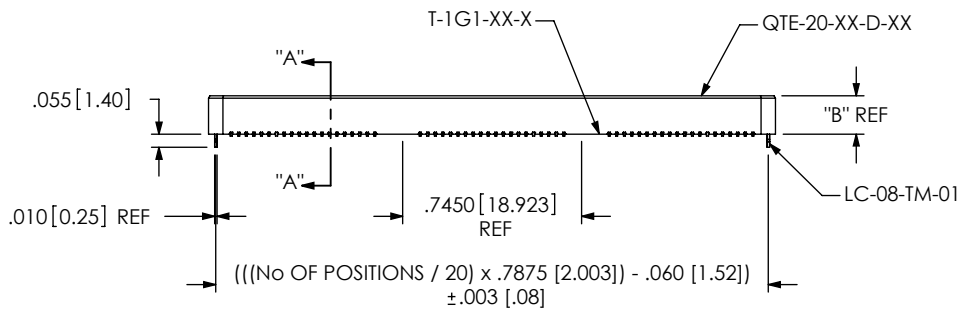
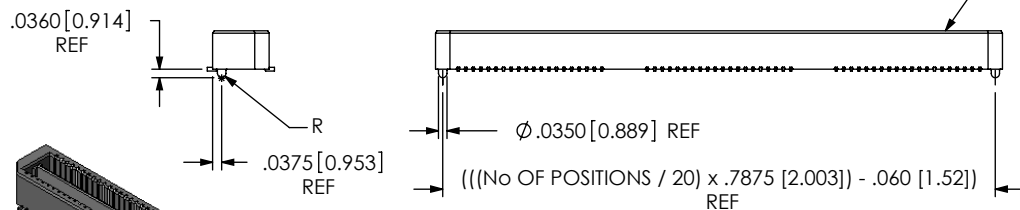


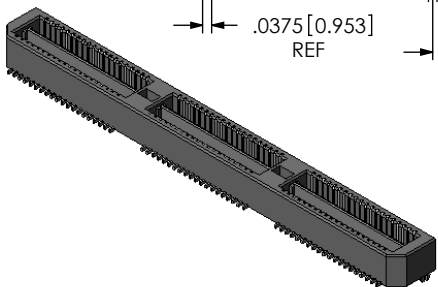
FIG. 1
QTE-060-01-X-D-LC SHOWN



-LC: LOCKING CLIP OPTION SHOWN



-A: ALIGNMENT PIN OPTION SHOWN
(STYLES -01, -02 & -03)



(SEE NOTE 11)

No OF POSITIONS	COPLANARITY INCLUDING GP
-020 THRU -060	.004 [.10]
-080 THRU -100	.006 [.15]

STYLE	"A"	"B"	BODY	GROUND PLANE	TERMINAL	MATED HEIGHT WITH QSE-01
-01	.1680 [4.267]	.1600 [4.064]	QTE-20-01-D-XX	T-1G1-01-X	T-1S39-01-X	.197 [5.00] REF
-02	.2861 [7.267]	.2781 [7.064]	QTE-20-02-D-XX	T-1G1-02-X	T-1S59-02-X	.315 [8.00] REF
-03	.4042 [10.267]	.3962 [10.063]	QTE-20-03-D-XX	T-1G1-03-X	T-1S39-03-X	.433 [11.00] REF

QTE-XXX-XX-X-D-XXX

No OF POSITIONS
-020, -040, -060,
* -080, *100
(PER ROW)
* (SEE NOTE 11)

LEAD STYLE

- 01: .1680 [4.267]
- 02: .2861 [7.267]
- 03: .4042 [10.267]
- 04: .6010 [15.265]
- 05: .7190 [18.263]
- 06: .8370 [21.260]
- 07: .9540 [24.231]
- 08: 1.1510 [29.260]
- 09: .5220 [13.258]
- 10: .5606 [14.239]

PLATING SPECIFICATION

- F: FLASH GOLD WITH MATTE TIN TAILS
(USE T-1SXX-XX-F, T-1G1-XX-F)
(SEE NOTE 07)
- L: LIGHT GOLD WITH MATTE TIN TAILS
(USE T-1SXX-XX-L, T-1G1-XX-L)
- H: HEAVY GOLD WITH FLASH GOLD TAILS
(USE T-1SXX-XX-H, T-1G1-XX-G)
- C: ELECTRO-POLISHED SELECTIVE
(USE T-1SXX-XX-C, T-1G1-XX-L)

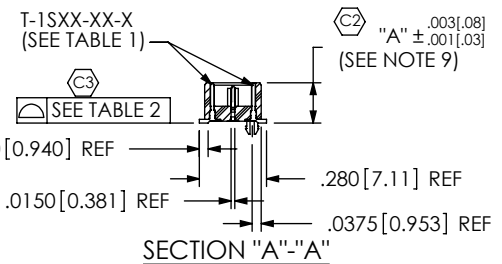
ROW SPECIFICATION

- D: DOUBLE (USE QTE-20-XX-D-XX & QTEH-20-XX-D-XX)

No OF BANKS

OPTION

- A: ALIGNMENT PINS
(N/A ON STYLE -07 & -08)
- LC: LOCKING CLIPS
(USE LC-08-TM-01)
- K: POLYIMIDE FILM
(USE K-DOT-.276-.375-.005, SEE FIG. 2)
- TR: TAPE & REEL (60 POS. MAX)
(40 FOR -GP OPTION)
(N/A ON STYLE -05, -06, -07, & -08)
- GP: GUIDE POSTS
(AVAILABLE ON -01 ONLY)
(USE QTE-20-01-D-XX-GP)
(SEE FIG. 3, SHT. 2)
- SD: SCREW DOWN
(AVAILABLE ON -01 ONLY)
(USE QTE-20-01-D-XX-SD)
(SEE FIGURE 4, SHEET 2)
- FL: FRICTION LOCKS (SEE FIG. 8, SHEET 4)
(ONLY AVAILABLE ON -01 & -02)
(NOT AVAILABLE WITH -GP, -SD)
- RT1: RETENTION OPTION (SEE FIG. 9, SHEET 5)
(ONLY AVAILABLE ON -01 LEAD STYLE)
(MUST USE -A OPTION)
(USE QTE-20-01-D-XX-A-RT1 & T-1R36-01-F)
(NOT AVAILABLE WITH -LC, -GP, -SD, OR -FL)
(NOT AVAILABLE ON -080 & -100 POS)



NOTES:

1. Ⓢ REPRESENTS A CRITICAL DIMENSION.
2. MINIMUM TERMINAL RETENTION: 8 OZ.
3. MINIMUM GROUND PLANE RETENTION: 1 LB.
4. PARTS TO BE MOLDED TO POSITION.
5. MAXIMUM VARIANCE OF .002 [.05].
6. DIMENSION APPLIES TO TERMINALS AND GROUND PLANE.
7. T-1SXX-XX-L CAN BE SUBSTITUTED FOR T-1SXX-XX-F; T-1G-XX-G CAN BE SUBSTITUTED FOR T-1G-XX-F.
8. NOTE DELETED.
9. GROUND PLANE PRESS HEIGHT MUST BE .003 [.08] LESS THAN THE MAX HEIGHT OR .001 [.03] GREATER THAN THE MINIMUM HEIGHT OF THE TERMINALS.
10. T-1R36 RETENTION TO BODY TO BE 1.0 LBF.
11. FOR NEW APPLICATIONS REQUIRING THESE POSITIONS, PLEASE CONTACT SAMTEC INTERCONNECT PROCESSING GROUP.

UNLESS OTHERWISE SPECIFIED, DIMENSIONS ARE IN INCHES. TOLERANCES ARE:
DECIMALS .XX: ±.01 [.3]
.XXX: ±.005 [.13]
.XXXX: ±.0020 [.051]

PROPRIETARY NOTE
THIS DOCUMENT CONTAINS INFORMATION CONFIDENTIAL AND PROPRIETARY TO SAMTEC, INC. AND SHALL NOT BE REPRODUCED OR TRANSFERRED TO OTHER DOCUMENTS OR DISCLOSED TO OTHERS OR USED FOR ANY PURPOSE OTHER THAN THAT WHICH IT WAS OBTAINED WITHOUT THE EXPRESSED WRITTEN CONSENT OF SAMTEC, INC.



520 PARK EAST BLVD, NEW ALBANY, IN 47150
PHONE: 812-944-6733 FAX: 812-948-5047
e-Mail: info@SAMTEC.com code: 55322

MATERIAL: DO NOT SCALE DRAWING SHEET SCALE: 1:0.8

INSULATOR: LCP, COLOR: BLACK
TERMINAL: PHOS BRONZE
GROUND PLANE: PHOS BRONZE

DESCRIPTION:
.8mm DOUBLE ROW HS TERMINAL ASSEMBLY

DWG. NO. QTE-XXX-XX-X-D-XXX

BY: DEAN P 5/28/1999 SHEET 1 OF 6

FIG. 2
-K: POLYIMIDE FILM PAD
[USE K-DOT-.276-.375-.005]

TABLE 3	
STYLE	"R"
-01	.173[4.39]
-02	.291[7.39]
-03	.409[10.39]
-04	.605[15.37]
-05	.721[18.31]
-06	.840[21.33]
-09	.528 [13.41]
-10	.567[14.37]

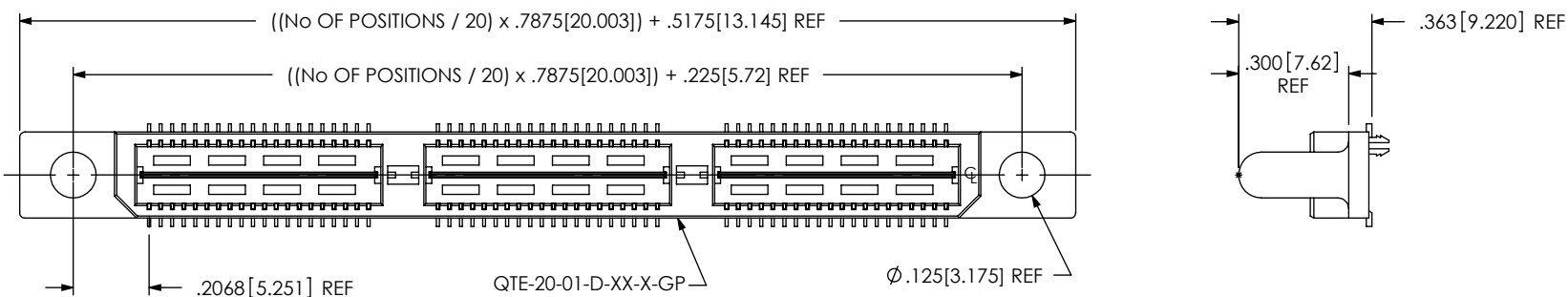
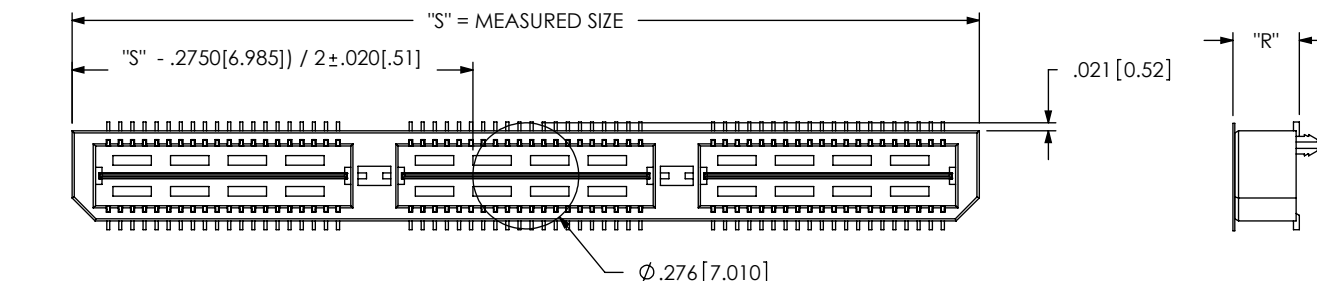


FIG. 3
-GP: GUIDE POST OPTION
(-01 LEAD STYLE ONLY)
(SAME AS FIG. 1, UNLESS OTHERWISE STATED)

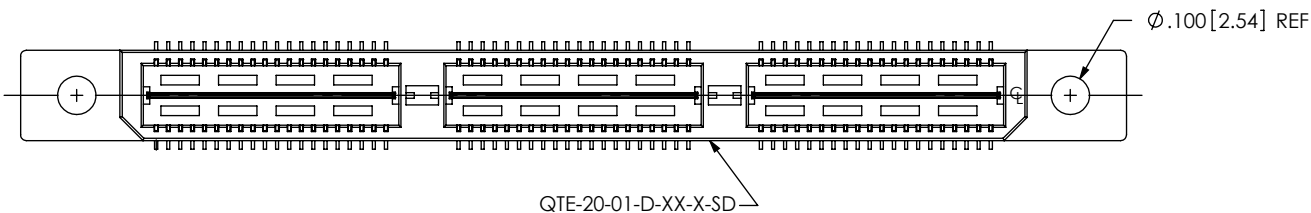


FIG. 4
-SD: SCREW DOWN OPTION
(-01 LEAD STYLE ONLY)
(SAME AS FIG. 3, UNLESS OTHERWISE STATED)

PROPRIETARY NOTE
THIS DOCUMENT CONTAINS INFORMATION
CONFIDENTIAL AND PROPRIETARY TO
SAMTEC, INC. AND SHALL NOT BE REPRODUCED
OR TRANSFERRED TO OTHER DOCUMENTS OR
DISCLOSED TO OTHERS OR USED FOR ANY
PURPOSE OTHER THAN THAT WHICH IT WAS
OBTAINED WITHOUT THE EXPRESSED WRITTEN
CONSENT OF SAMTEC, INC.

DO NOT SCALE DRAWING

SHEET SCALE: 2:1

samtec

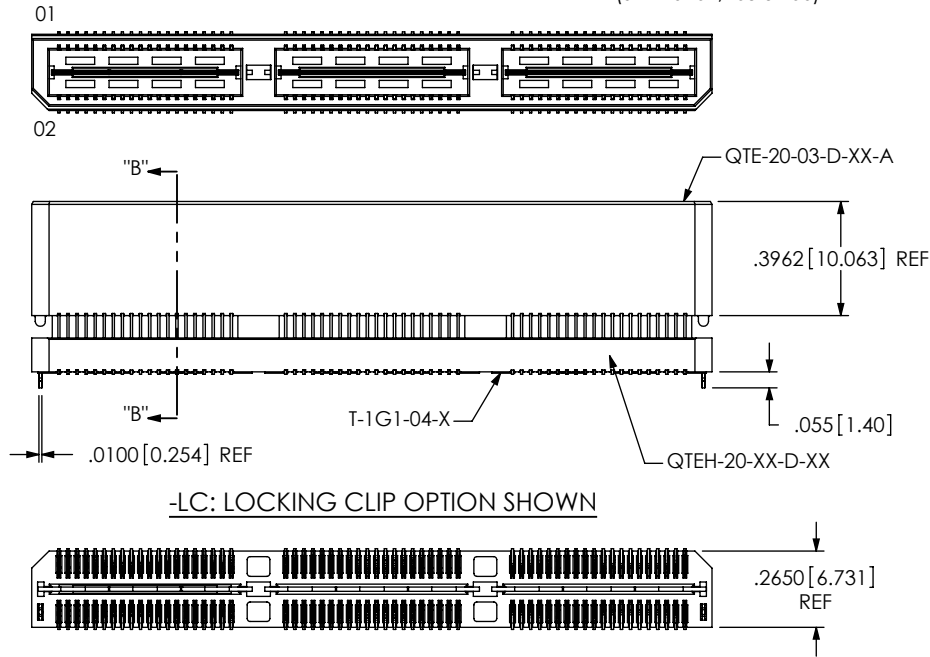
520 PARK EAST BLVD, NEW ALBANY, IN 47150
PHONE: 812-944-6733 FAX: 812-948-5047
e-Mail: info@SAMTEC.com code: 55322

DESCRIPTION:
.8mm DOUBLE ROW HS TERMINAL ASSEMBLY

DWG. NO.
QTE-XXX-XX-X-D-XXX

BY: DEAN P 5/28/1999 SHEET 2 OF 6

FIG. 5
QTE-060-04-X-D-LC SHOWN
[DIFFERENT AS SHOWN, OTHERWISE SAME AS FIG. 1]
(STYLES -04, -05 & -06)



STYLE	"A"	GROUND PLANE	TABLE 4			MATED HEIGHT WITH QSE-01
			TERMINAL	BOTTOM SPACER BODY	TOP BODY	
-04	.6010 [15.265]	T-1G1-04-X	T-1S41-04-X	QTEH-20-01-D-XX-X	QTE-20-03-D-XX-X	.630 [16.00] REF
-05	.7190 [18.263]	T-1G1-05-X	T-1S41-05-X	QTEH-20-01-D-XX-X	QTE-20-03-D-XX-X	.748 [19.00] REF
-06	.8370 [21.260]	T-1G1-06-X	T-1S41-06-X	QTEH-20-02-D-XX-X	QTE-20-03-D-XX-X	.866 [22.00] REF
-07	.9540 [24.232]	T-1G17-01-X	T-1S61-01-X	QTEH-20-04-D-XX-X	QTE-20-02-D-XX-X	.984 [25.00] REF
-08	1.1510 [29.235]	T-1G17-02-X	T-1S61-02-X	QTEH-20-04-D-XX-X	QTE-20-02-D-XX-X	1.181 [30.00] REF
-09	.5220 [13.259]	T-1G1-09-X	T-1S60-09-X	QTEH-20-01-D-XX-X	QTE-20-02-D-XX-X	.551 [14.00] REF
-10	.5606 [14.239]	T-1G1-10-X	T-1S60-10-X	QTEH-20-01-D-XX-X	QTE-20-02-D-XX-X	.591 [15.00] REF

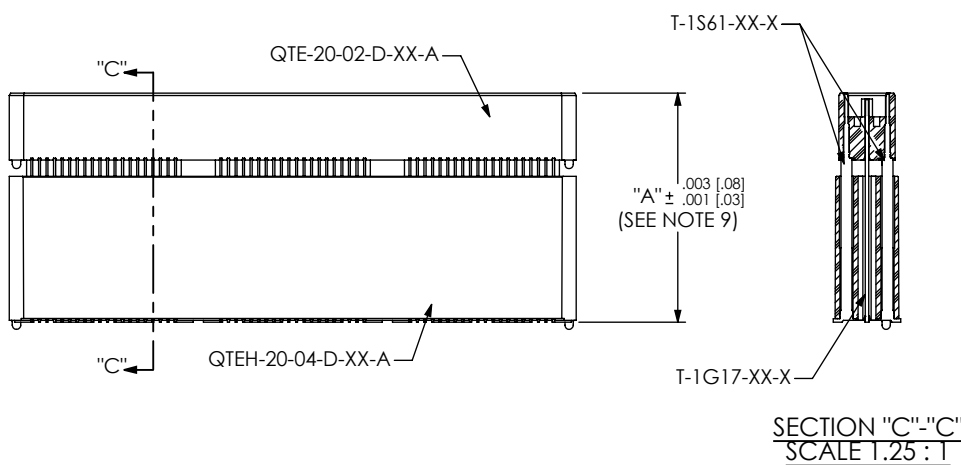
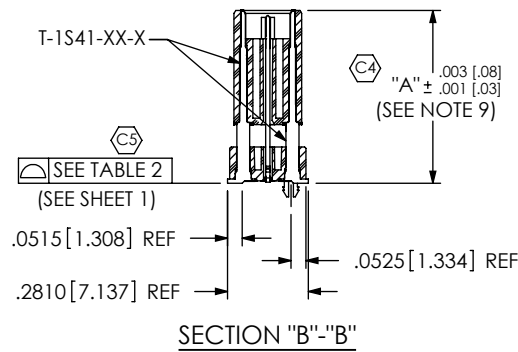


FIG. 6
QTE-060-07-X-D-A SHOWN
[DIFFERENT AS SHOWN, OTHERWISE SAME AS FIG. 5]
(STYLES -07 & -08)

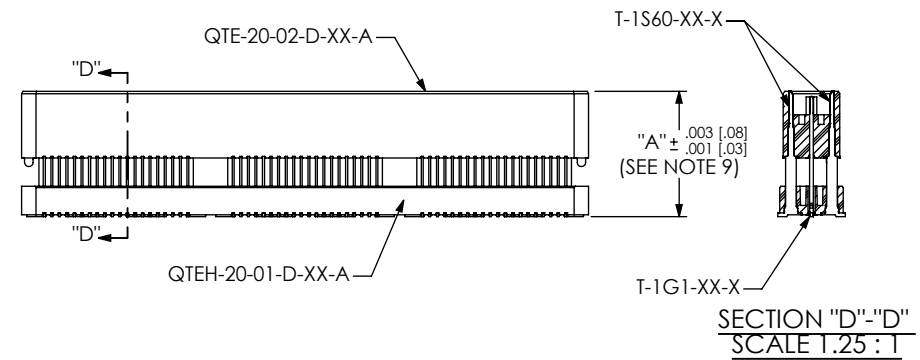


FIG. 7
QTE-060-09-X-D-A SHOWN
[DIFFERENT AS SHOWN, OTHERWISE SAME AS FIG. 5]
(STYLES -09 & -10)

c:\enterprisevault\DWG\MISC\MKTG\QTE-XXX-XX-X-D-XXX-MKT.SLDDRW

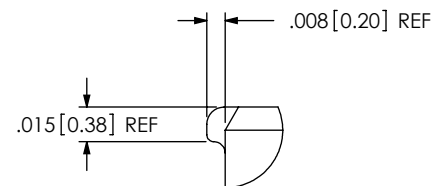
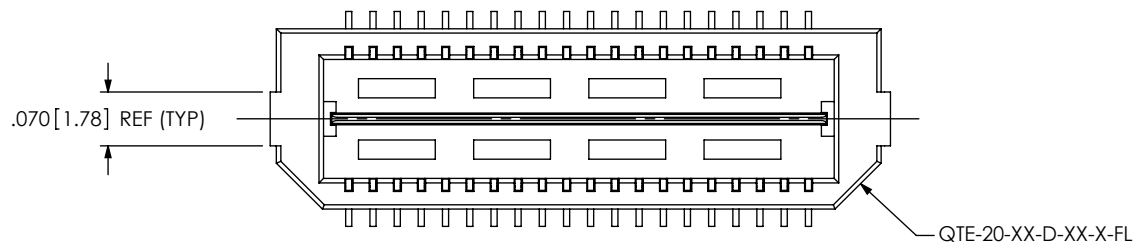
PROPRIETARY NOTE
THIS DOCUMENT CONTAINS INFORMATION CONFIDENTIAL AND PROPRIETARY TO SAMTEC, INC. AND SHALL NOT BE REPRODUCED OR TRANSFERRED TO OTHER DOCUMENTS OR DISCLOSED TO OTHERS OR USED FOR ANY PURPOSE OTHER THAN THAT WHICH IT WAS OBTAINED WITHOUT THE EXPRESSED WRITTEN CONSENT OF SAMTEC, INC.

520 PARK EAST BLVD. NEW ALBANY, IN 47150
PHONE: 812-944-6733 FAX: 812-948-5047
e-Mail: info@SAMTEC.com code: 53322

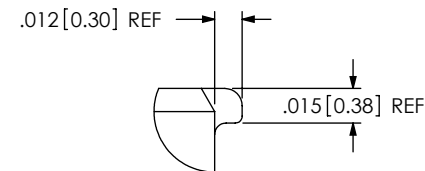
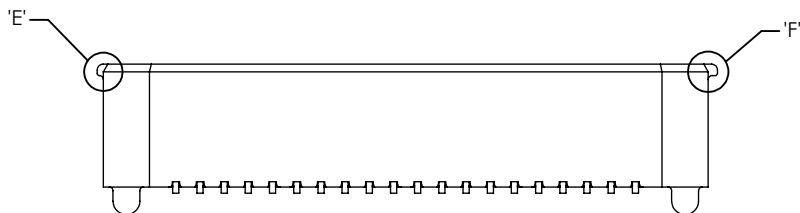
DO NOT SCALE DRAWING
SHEET SCALE: 1:0.666667

DESCRIPTION:
.8mm DOUBLE ROW HS TERMINAL ASSEMBLY
DWG. NO.
QTE-XXX-XX-X-D-XXX

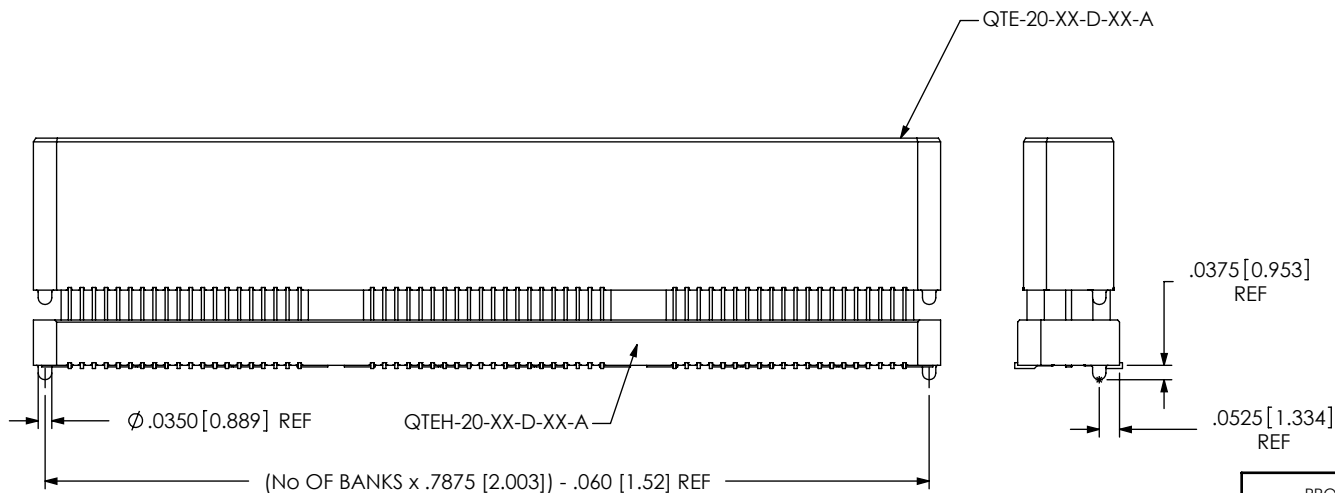
FIG. 8
 -FL: FRICTION LOCKS
 (ONLY AVAILABLE ON -01 & -02 LEAD STYLES)
 (NOT AVAILABLE WITH -GP, -SD OPTIONS)
 (SAME AS FIG. 1, UNLESS OTHERWISE STATED)



DETAIL 'E'
 SCALE 12:1



DETAIL 'F'
 SCALE 12:1



-A: ALIGNMENT PIN OPTION
 (STYLES -04, -05, -06, -07, -08, -09 & -10)

PROPRIETARY NOTE
 THIS DOCUMENT CONTAINS INFORMATION CONFIDENTIAL AND PROPRIETARY TO SAMTEC, INC. AND SHALL NOT BE REPRODUCED OR TRANSFERRED TO OTHER DOCUMENTS OR DISCLOSED TO OTHERS OR USED FOR ANY PURPOSE OTHER THAN THAT WHICH IT WAS OBTAINED WITHOUT THE EXPRESSED WRITTEN CONSENT OF SAMTEC, INC.

DO NOT SCALE DRAWING

SHEET SCALE: 2:1



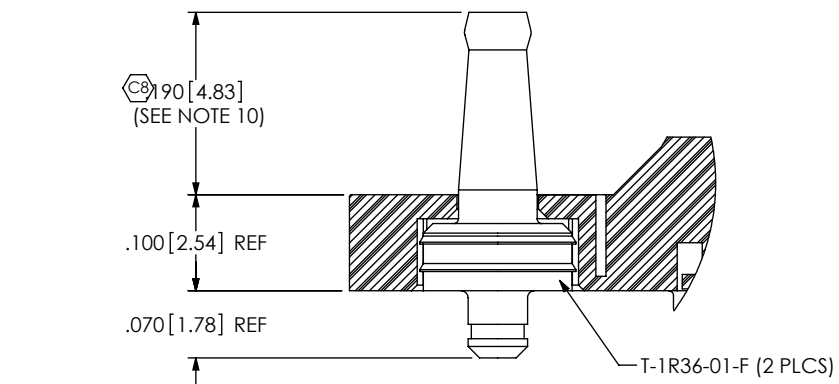
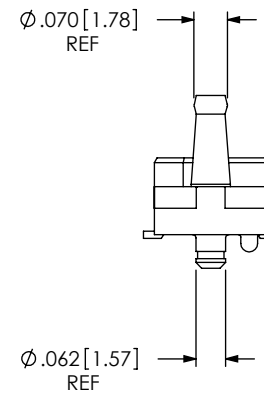
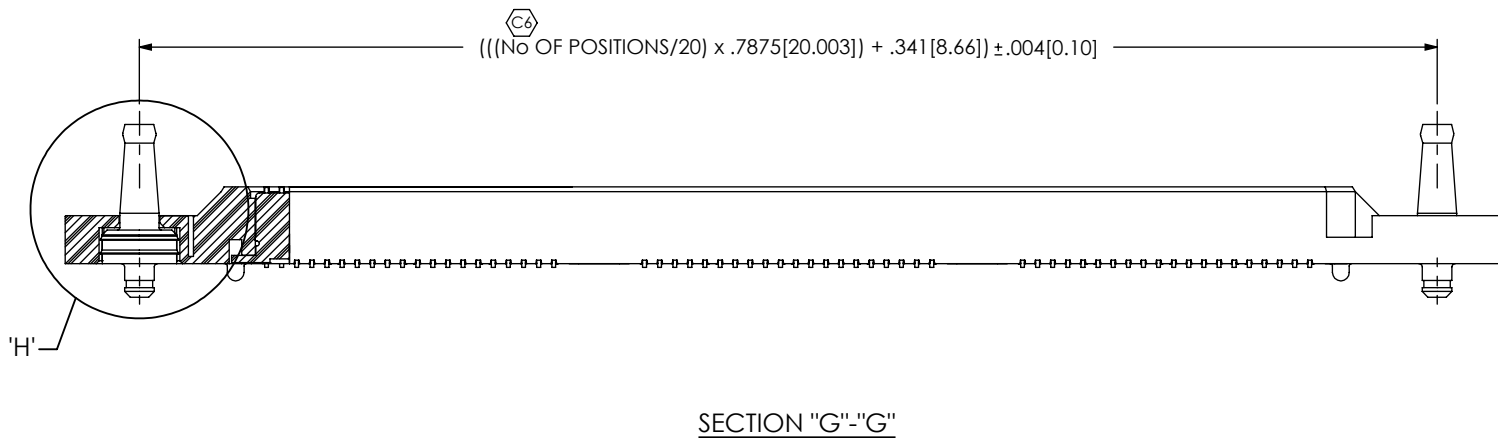
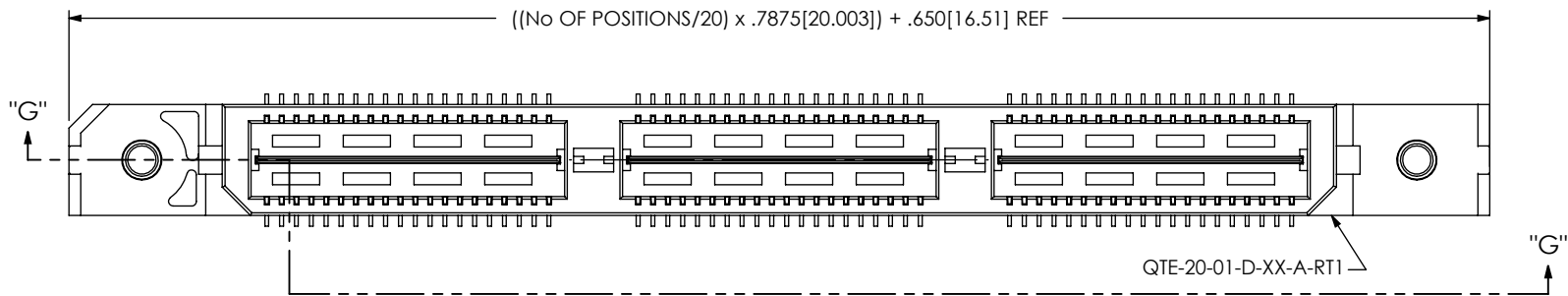
520 PARK EAST BLVD, NEW ALBANY, IN 47150
 PHONE: 812-944-6733 FAX: 812-948-5047
 e-Mail: info@SAMTEC.com code: 55322

DESCRIPTION:
.8mm DOUBLE ROW HS TERMINAL ASSEMBLY

DWG. NO.
QTE-XXX-XX-X-D-XXX

BY: DEAN P 5/28/1999 SHEET 4 OF 6

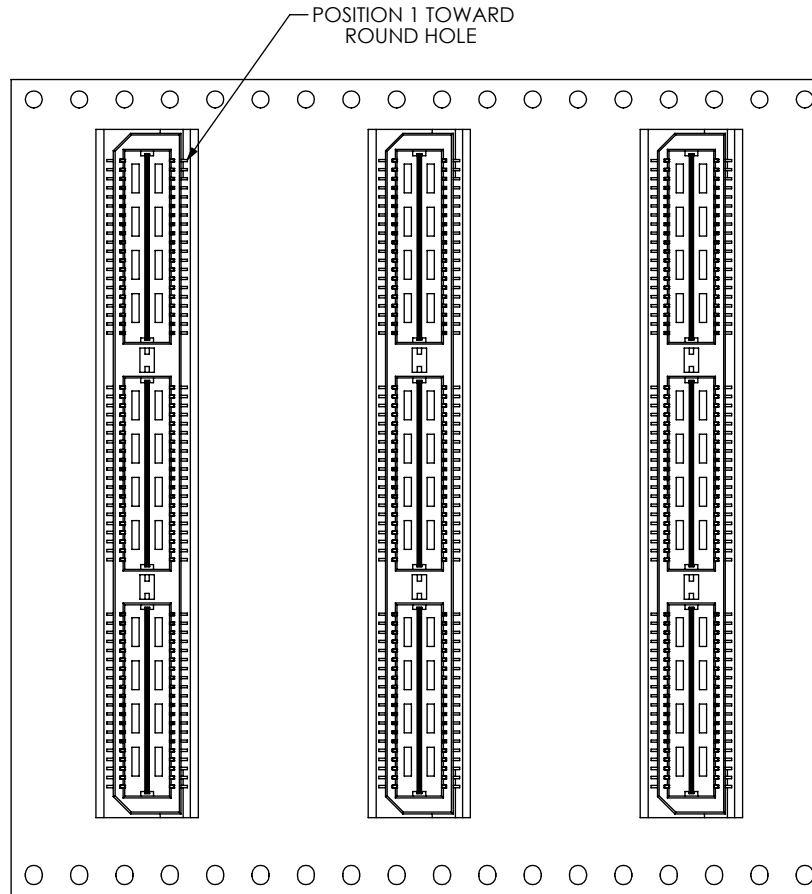
FIG. 9
 -RT1: RETENTION OPTION
 (ONLY AVAILABLE ON -01 LEAD STYLE) (MUST USE -A OPTION)
 (NOT AVAILABLE WITH -LC, -GP, -SD, OR -FL OPTIONS)
 (NOT AVAILABLE ON -080 & -100 POSITIONS)
 (SAME AS FIG. 1, UNLESS OTHERWISE STATED)



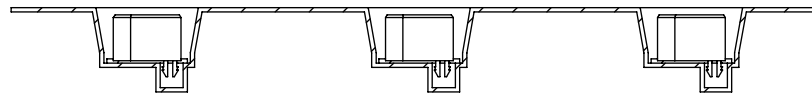
DETAIL 'H'
 SCALE 5:1

<p>PROPRIETARY NOTE THIS DOCUMENT CONTAINS INFORMATION CONFIDENTIAL AND PROPRIETARY TO SAMTEC, INC. AND SHALL NOT BE REPRODUCED OR TRANSFERRED TO OTHER DOCUMENTS OR DISCLOSED TO OTHERS OR USED FOR ANY PURPOSE OTHER THAN THAT WHICH IT WAS OBTAINED WITHOUT THE EXPRESSED WRITTEN CONSENT OF SAMTEC, INC.</p> <p>DO NOT SCALE DRAWING</p> <p>SHEET SCALE: 1:0.4</p>	
	<p>520 PARK EAST BLVD., NEW ALBANY, IN 47150 PHONE: 812-944-6733 FAX: 812-948-5047 e-Mail: info@SAMTEC.com code: 55322</p>
	<p>DESCRIPTION: .8mm DOUBLE ROW HS TERMINAL ASSEMBLY</p>
	<p>DWG. NO. QTE-XXX-XX-X-D-XXX</p>
<p>BY: DEAN P 5/28/1999</p>	<p>SHEET 5 OF 6</p>

FIG. 10
 -TR: PACKAGING OPTION
 (NOT AVAILABLE ON LEAD STYLES -05, -06, -07 & -08)
 (SAME AS FIG. 1, UNLESS OTHERWISE STATED)



USER DIRECTION OF UN-REELING →
 POCKET NOT DETAILED



PROPRIETARY NOTE
 THIS DOCUMENT CONTAINS INFORMATION
 CONFIDENTIAL AND PROPRIETARY TO
 SAMTEC, INC. AND SHALL NOT BE REPRODUCED
 OR TRANSFERRED TO OTHER DOCUMENTS OR
 DISCLOSED TO OTHERS OR USED FOR ANY
 PURPOSE OTHER THAN THAT WHICH IT WAS
 OBTAINED WITHOUT THE EXPRESSED WRITTEN
 CONSENT OF SAMTEC, INC.

DO NOT SCALE DRAWING

SHEET SCALE: 1:0.4

samtec

520 PARK EAST BLVD, NEW ALBANY, IN 47150
 PHONE: 812-944-6733 FAX: 812-948-5047
 e-Mail: info@SAMTEC.com code: 55322

DESCRIPTION:
 .8mm DOUBLE ROW HS TERMINAL ASSEMBLY

DWG. NO. QTE-XXX-XX-X-D-XXX

BY: DEAN P 5/28/1999 SHEET 6 OF 6