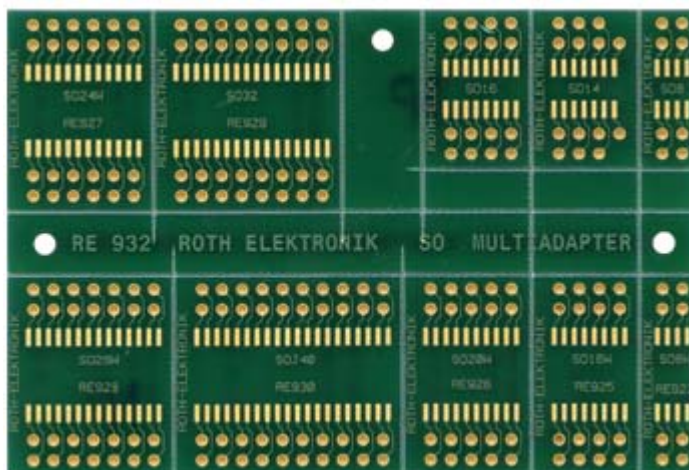




Stock No.: RE932



Stock No.: RE932

SO/ SOJ-SMD Multiadapter (small outline)

- pitch 1,27 mm
- Epoxy fibre - glass FR4 1.50 mm
double-sided 35 µm Cu
- Plated through-holes Ø 1.00 mm
- adapter for 10 different SOs

Pitch (mm)	mil	Pin/quantity	body size (mm)
1,27	0,50	8	3,9 (153 mil)
1,27	0,50	8 - w	7,5 (295 mil)
1,27	0,50	14	3,9 (153 mil)
1,27	0,50	16	3,9 (153 mil)
1,27	0,50	16 - w	7,5 (295 mil)
1,27	0,50	20 - w	7,5 (295 mil)
1,27	0,50	24 - w	7,5 (295 mil)
1,27	0,50	28 - w	7,5 (295 mil)
1,27	0,50	32	7,5 (295 mil)
1,27	0,50	40 (SOJ)	10,16 (400 mil)

- solder and component side with chemical gold surface and solder stop mask
- pre-scratched rated break points for the separation of individual modules from the board
- size: 58.50 x 88.00 mm