

DESCRIPTION

DATA SHEET INDICATING TECHNICAL DETAILS FOR INDIVIDUAL STRAIGHT ENTRY TUBE TERMINALS

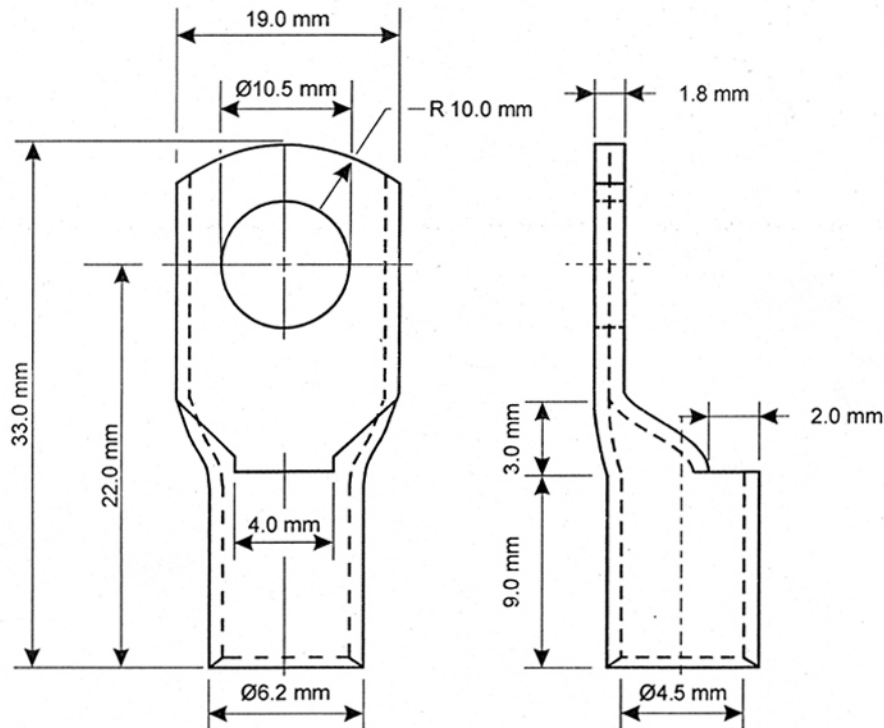
QUALITY SYSTEM No:

DAV1943DRAWN BY: **M.TAMAN**

SIGNED:

*M. Taman*ISSUE DATE: **18/01/2002**DRAWING SCALE SIZE: **NOT TO SCALE**

Sheet 16 of 83



NOMINAL TOLERANCE OF DIMENSIONS SHOWN IS ± 0.25 mm
 NOMINAL TOLERANCE OF OVERALL LENGTH IS ± 2.00 mm

Davico Part Number	D10-10
Codes Of Practice	To BS 7609 (1992)
Material	To BS EN 12449 (1999)
Finish	Electro Tinned To BS 1872 (1984) (1995)
Working Temperature	Up To 180°C
Working Voltage	Up To 1000V
Palm Marking	D10-10
Stranded Cable Size	10.0 mm ²
Flexible Cable Size	10.0 mm ²
Stud Hole Size	10.0 mm
Copper Conductivity	99.9% I.A.C.S.
Copper Tube	Double Annealed

DAVICO

Keeping electricity firmly in its place.

Davico Industrial Limited, Charles Street, West Bromwich, West Midlands, B70 0AZ, U.K.
 Tel: (0121) 520-7101/3040. Fax: (0121) 520-7776 (SALES) / (0121) 520-0035 (ENQUIRES)
 E-Mail sales: sales@davico.co.uk Enquiries: enq@davico.co.uk
 World Wide Web: <http://www.davico.co.uk>

REV	DATE		SIG.
1			
REV	DATE		SIG.
2			
REV	DATE		SIG.
3			