

636-710
636-733

IDC Ribbon Cable

Series 2026



UL Approved cable is available in all industry standard sizes from 9 to 64 conductors, in both grey and rainbow format. Elco can also offer cable which is CSA Approved. For details please contact your local sales office.

TECHNICAL SPECIFICATION

Cable Type:

Flat cable, UL listed, polyvinyl chloride (PVC) insulation. Standard round conductor 28 AWG, 0.381mm (0.015" nominal OD, 7/36 tin coated copper).

Conductor Spacing:

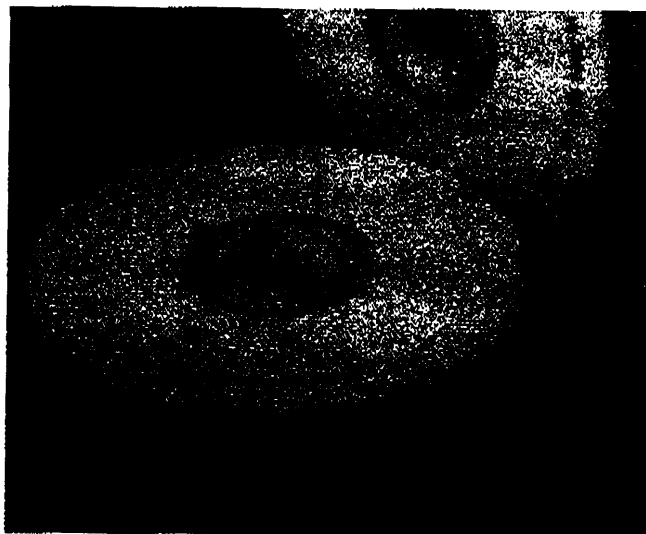
0.050" ± 0.002"
(1.27mm ± 0.051mm), center to center

Standard Reel Length:

100 meters (328 feet)

Color:

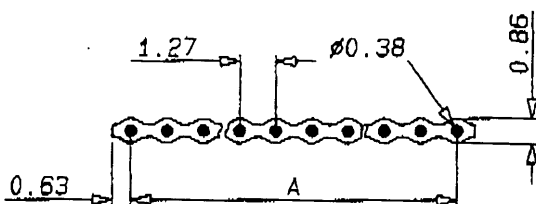
Grey with marker on reference edge. Rainbow colored, in sequence from reference edge - Brown/Red/Orange/Yellow/Green/Blue/Violet/Grey/White/Black. Colors repeat.



Ordering Code for 0.050" (1.27mm) pitch cable

No. of Conductors	Color	Reference Number	Dim. A
9	Grey	90-2026-7049-01-000	0.400" (10.16mm)
9	Rainbow	90-2026-7048-01-000	0.400" (10.16mm)
10	Grey	90-2026-7021-01-000	0.450" (11.43mm)
10	Rainbow	90-2026-7020-01-000	0.450" (11.43mm)
14	Grey	90-2026-7017-01-000	0.650" (16.51mm)
14	Rainbow	90-2026-7016-01-000	0.650" (16.51mm)
15	Grey	90-2026-7051-01-000	0.700" (17.78mm)
15	Rainbow	90-2026-7050-01-000	0.700" (17.78mm)
16	Grey	90-2026-7015-01-000	0.750" (19.05mm)
16	Rainbow	90-2026-7014-01-000	0.750" (19.05mm)
20	Grey	90-2026-7013-01-000	0.950" (24.13mm)
20	Rainbow	90-2026-7012-01-000	0.950" (24.13mm)
25	Grey	90-2026-7053-01-000	1.20" (30.48mm)
25	Rainbow	90-2026-7052-01-000	1.20" (30.48mm)
26	Grey	90-2026-7011-01-000	1.25" (31.75mm)
26	Rainbow	90-2026-7010-01-000	1.25" (31.75mm)
34	Grey	90-2026-7009-01-000	1.65" (41.91mm)
34	Rainbow	90-2026-7008-01-000	1.65" (41.91mm)
37	Grey	90-2026-7055-01-000	1.80" (45.72mm)
37	Rainbow	90-2026-7054-01-000	1.80" (45.72mm)
40	Grey	90-2026-7007-01-000	1.95" (49.53mm)
40	Rainbow	90-2026-7006-01-000	1.95" (49.53mm)
50	Grey	90-2026-7005-01-000	2.45" (62.23mm)
50	Rainbow	90-2026-7004-01-000	2.45" (62.23mm)
60	Grey	90-2026-7003-01-000	2.95" (74.93mm)
60	Rainbow	90-2026-7002-01-000	2.95" (74.93mm)
64	Grey	90-2026-7001-01-000	3.15" (80.01mm)
64	Rainbow	90-2026-7000-01-000	3.15" (80.01mm)

Detail of 0.050" (1.27mm) pitch cable



Ordering Code for 0.100" (2.54mm) pitch cable

Reference Number	No. of Contacts	Color
90-2026-7101-00-000	8 position	Grey
90-2026-7094-00-000	14 position	Grey
90-2026-7106-00-000	16 position	Grey
90-2026-7095-00-000	18 position	Grey
90-2026-7107-00-000	20 position	Grey
90-2026-7096-00-000	24 position	Grey

For use with Series 8284 only. See page 10.