

# Distinctive Characteristics

Rocker caps and housing available in a variety of colors.

Protective barrier available to prevent accidental actuation.

Constructed for dust resistance with interior cover of polyamide between actuator and contact area.

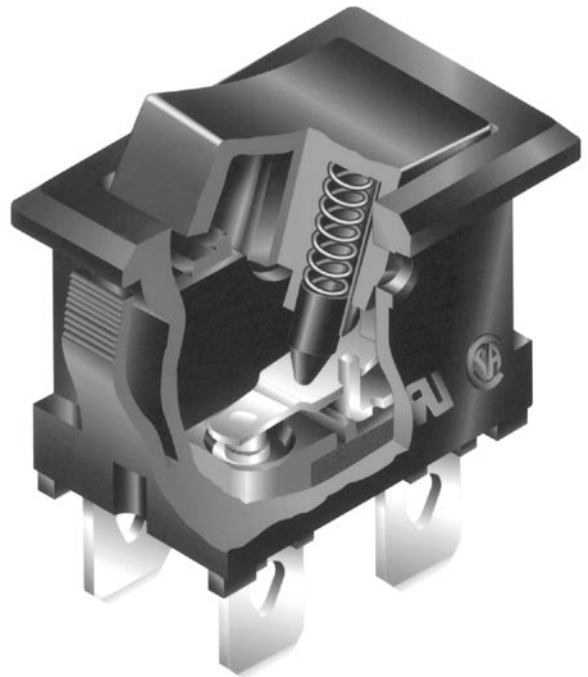
Easy, crisp actuation.

Small size well suited for telecommunication, measuring, automation, and consumer applications.

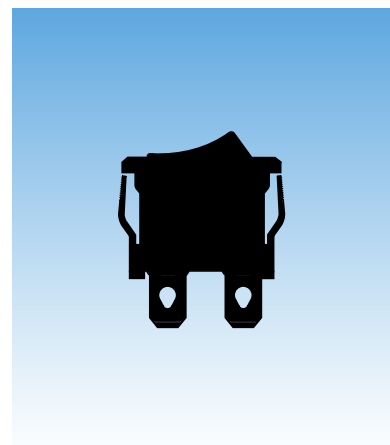
Terminals are molded in to lock out flux, dust, and other contaminants.

Outer case of heat resistant resin meets UL94V-0 flammability standard.

Spot illuminated rocker available.



Actual Size



# General Specifications

### Electrical Capacity (Resistive Load)

**Power Level:** 6A @ 125/250V AC

### Other Ratings

<b>Contact Resistance:</b>	10 milliohms maximum
<b>Insulation Resistance:</b>	500 megohms minimum @ 500V DC
<b>Dielectric Strength:</b>	2,000V AC minimum between contacts for 1 minute minimum; 4,000V AC minimum between contacts & case for 1 minute minimum
<b>Mechanical Life:</b>	30,000 operations minimum
<b>Electrical Life:</b>	10,000 operations minimum
<b>Nominal Operating Force:</b>	Single Pole 3.92N & Double Pole 5.39N
<b>Angle of Throw:</b>	30°

### Materials & Finishes

<b>Rocker:</b>	Polyphenylene oxide
<b>Housing/Case:</b>	Polyamide (UL94V-0)
<b>Movable Contactor:</b>	Copper with silver plating
<b>Movable Contacts:</b>	Silver
<b>Stationary Contacts:</b>	Silver
<b>Interior Base:</b>	Laminated thermoset sheet
<b>End Terminals:</b>	Brass with silver plating
<b>Common Terminals:</b>	Copper with silver plating
<b>Lamp Terminals:</b>	Phosphor bronze with tin plating (illuminated models only)

### Environmental Data

<b>Operating Temp Range:</b>	-25°C through +70°C (-13°F through +158°F) for nonilluminated models; -25°C through +50°C (-13°F through +122°F) for illuminated models
<b>Humidity:</b>	90 ~ 95% humidity for 96 hours @ 40°C (104°F)
<b>Vibration:</b>	10 ~ 55Hz with peak-to-peak amplitude of 1.5mm traversing the frequency range & returning in 15 minutes; 3 right angled directions for 2 hours
<b>Shock:</b>	50G (490m/s <sup>2</sup> ) acceleration (tested in 6 right angled directions, with 5 shocks in each direction)
<b>Sealing:</b>	Dust resistant inner seal

### Installation

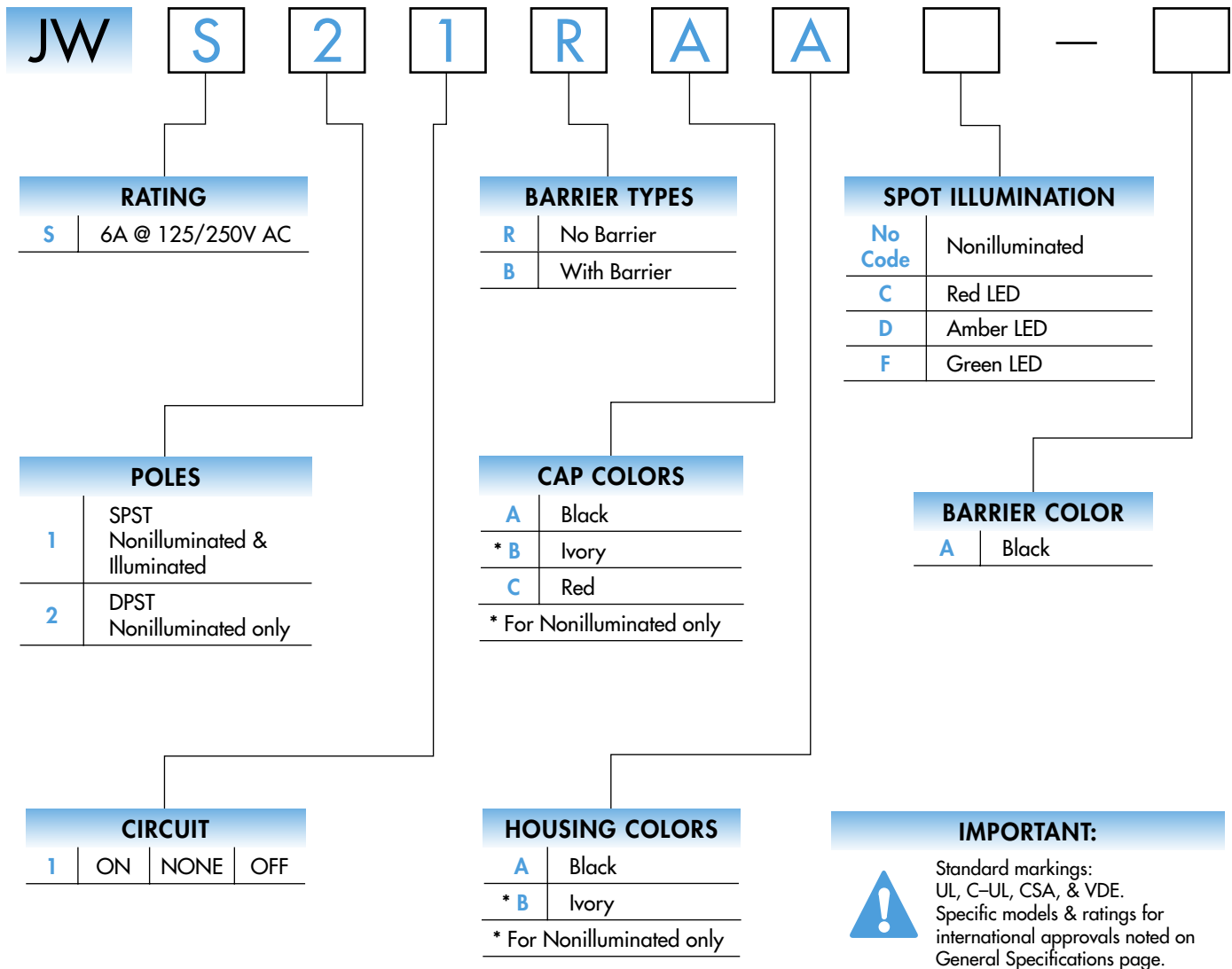
<b>Soldering:</b>	Manual Soldering: See Profile A in Supplement section.
<b>Cleaning:</b>	These devices are not process sealed. Hand cleaning locally using alcohol based solution.

### Standards & Certifications

<b>Flammability Standards:</b>	UL94V-0 for housing/frame & case/base
<b>UL Recognized:</b>	All JWS models recognized at 6A @ 125/250V AC; UL File No. WOYR2.E44145
<b>C-UL Recognized:</b>	All JWS models recognized at 6A @ 125/250V AC; UL File No. WOYR8.E44145
<b>CSA Certified:</b>	All JWS models certified at 6A @ 125/250V AC; CSA File No. 023535-0-000
<b>VDE Approved:</b>	All JWS models approved at 5A (3A) @ 125/250V AC; VDE License No. 119153

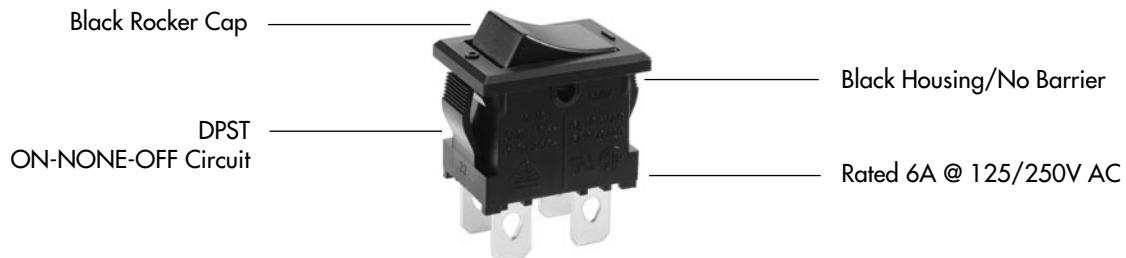


### TYPICAL SWITCH ORDERING EXAMPLE



### DESCRIPTION FOR TYPICAL ORDERING EXAMPLE

#### JWS21RAA



### RATING

**S** Power Level 6A @ 125/250V AC

### POLES & CIRCUITS

Pole	Model	Rocker Position			Connected Terminals			Throw & Schematics
		Down	Center	Up	Down	Center	Up	
								Note: Terminal numbers are actually on the switch.
SP	JWS11	ON	NONE	OFF	2-3	OPEN	OPEN	SPST
DP	JWS21	ON	NONE	OFF	1-3 4-6	OPEN	OPEN	DPST

### BARRIER TYPES & COLORS

**R** No Barrier

No-barrier type has a flat flange which is an integral part of the switch.



**B** With Barrier

Barrier Material: Polyamide  
Finish: Matte

Barrier AT219 is factory assembled.  
Dimensions for barrier are shown in the Accessories section.



Barrier Color Available: **A** Black

### CAP COLORS



Cap Material:  
Polyphenylene Oxide

Finish: Matte

Rocker cap is an integral part of the switch and not available separately.  
\* Ivory for nonilluminated models only.

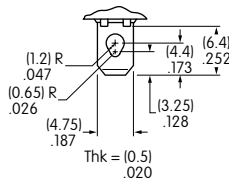
Cap Colors Available: **A** Black **B** \* Ivory **C** Red

### HOUSING

Material: Polyamide  
Finish: Matte

Colors Available: **A** Black **B** Ivory (for nonilluminated models only)

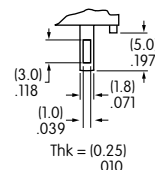
### TERMINALS



Switch

#### Solder Lug/.187" (4.75mm) Quick Connect

Switch assembly with connectors is not UL, CSA, C-UL, or VDE approved.



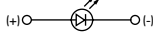
Lamp  
(spot illuminated models only)

### LED COLORS & SPECIFICATIONS FOR SPOT ILLUMINATED MODELS

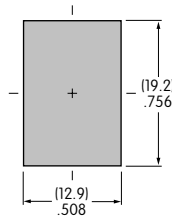
LEDs are supplied as an integral part of illuminated devices and are not available separately. LED polarity markings are on the bottom of the switch.

The electrical specifications shown here are determined at a basic temperature of 25°C.

If the source voltage exceeds the rated voltage, a ballast resistor is required. The resistor value can be calculated by using the formula in the Supplement section.

		<b>C</b>	<b>D</b>	<b>F</b>
		Red	Amber	Green
Forward Peak Current	$I_{FM}$	25mA	20mA	20mA
Continuous Forward Current	$I_F$	20mA	15mA	15mA
Forward Voltage	$V_F$	2.0V	1.9V	1.95V
Reverse Peak Voltage	$V_{RM}$	4V	5V	5V
Current Reduction Rate Above 25°C	$\Delta I_F$	0.42mA/°C	0.27mA/°C	0.27mA/°C
Ambient Temperature Range		-25°C ~ +50°C		

### PANEL CUTOUT & PANEL THICKNESS RANGES



#### Panel Thickness Ranges:

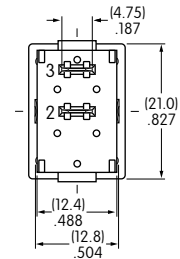
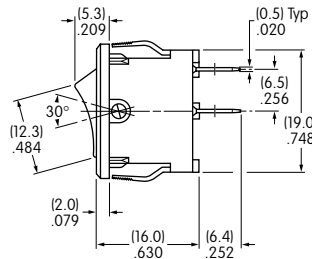
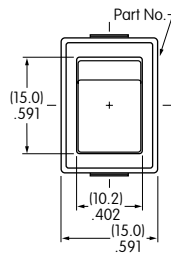
Without Barrier:  
.030" ~ .079" (0.75mm ~ 2.0mm)

With Barrier:  
.024" ~ .059" (0.6mm ~ 1.5mm)

### TYPICAL SWITCH DIMENSIONS

#### Nonilluminated • No Barrier

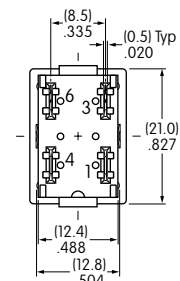
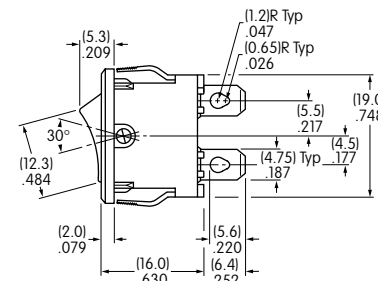
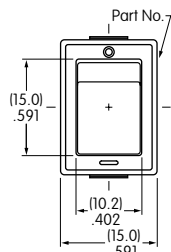
#### Single Pole



JWS11RCA

#### Nonilluminated • No Barrier

#### Double Pole



JWS21RAA

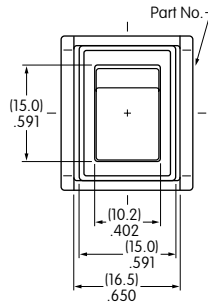
DPST models have IEC symbols for On-Off on the flange.

### TYPICAL SWITCH DIMENSIONS

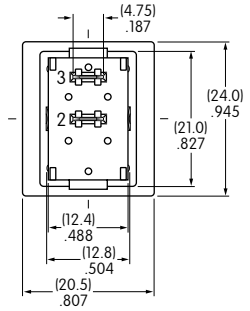
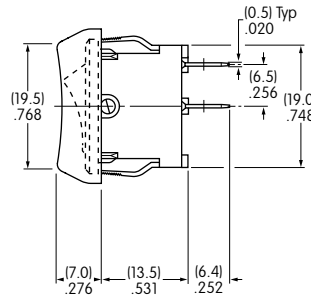
#### Nonilluminated • With Barrier



JWS11BBA-A



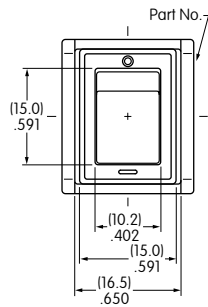
#### Single Pole



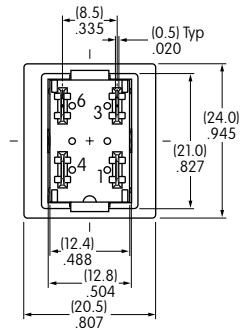
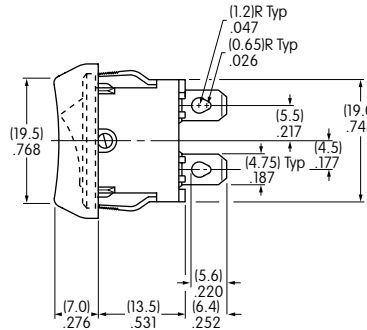
#### Nonilluminated • With Barrier



JWS21BAA-A



#### Double Pole

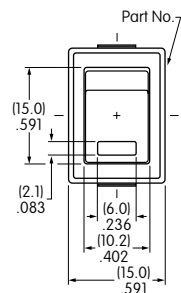


DPST models have IEC symbols for On-Off on the flange.

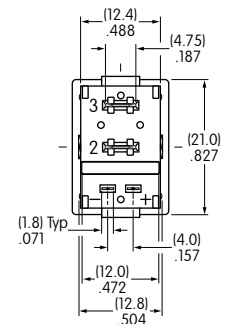
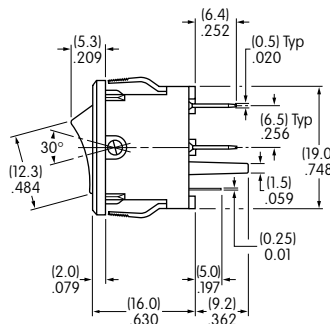
#### Spot Illuminated • No Barrier



JWS11RCAF



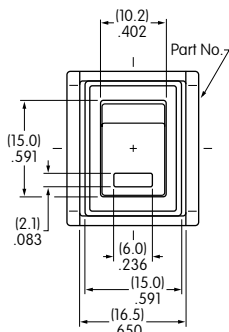
#### Single Pole



#### Spot Illuminated • With Barrier



JWS11BAAF-A



#### Single Pole

