

TOLERANCE GENERALE: ± 0.3
 GENERAL TOLERANCE: ± .01



SPECIFICATIONS

• **CONSTRUCTION**

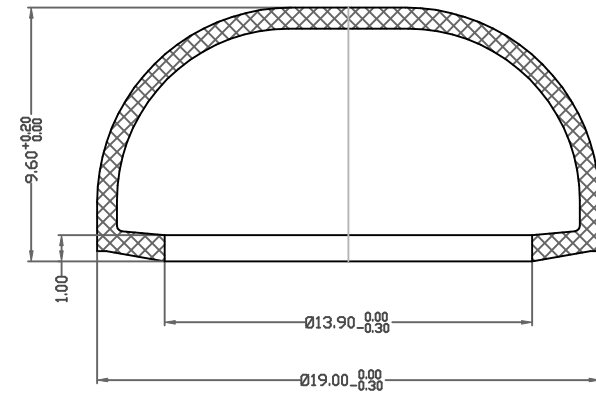
External boot for double sealing on IP switch.
 Available in black or transparent silicone.

• **MATERIALS**

Silicone rubber (55 ShA)

• **MECHANICAL AND ENVIRONMENTAL CHARACTERISTICS**

Operating Temperature : -40°C to +125°C
 Life : 500.000 cycles (operated with finger)
 Sealing : IP67 according to CEI529



Ref.	U5125	U5125-2	U5125-6
Material	Transparent Silicone (175D)	Black Silicone ALC 5068/V	Red Silicone RAL3020

MATERIAL:		 APEM Unité INTERRUPTEURS 55, av. E. HERRIOT BP 1 82303 CAUSSADE CEDEX Tél. 05.63.93.14.98 - Télécopie 05.63.93.19.03	DRAWN: Moreau.C								
TREATMENT:			DATE : 16.03.99								
FINISH:			CHECKED: D.Sire								
Scale:	5		Reference: U5125S								
<table border="1"> <tr> <td>B</td> <td>Ajout U5125-6 Red silicone RAL3020</td> <td>16.9.05</td> <td>Ricard</td> </tr> <tr> <td>A</td> <td>Cotes de 9.00 à 9.60 et Ø18.30 à 19.00</td> <td>31.1.05</td> <td>Ricard</td> </tr> </table>		B	Ajout U5125-6 Red silicone RAL3020	16.9.05	Ricard	A	Cotes de 9.00 à 9.60 et Ø18.30 à 19.00	31.1.05	Ricard	Code Nbr.	
B	Ajout U5125-6 Red silicone RAL3020	16.9.05	Ricard								
A	Cotes de 9.00 à 9.60 et Ø18.30 à 19.00	31.1.05	Ricard								
Issue Modifications Date Name		EXTERNAL BOOT IP SERIES									