

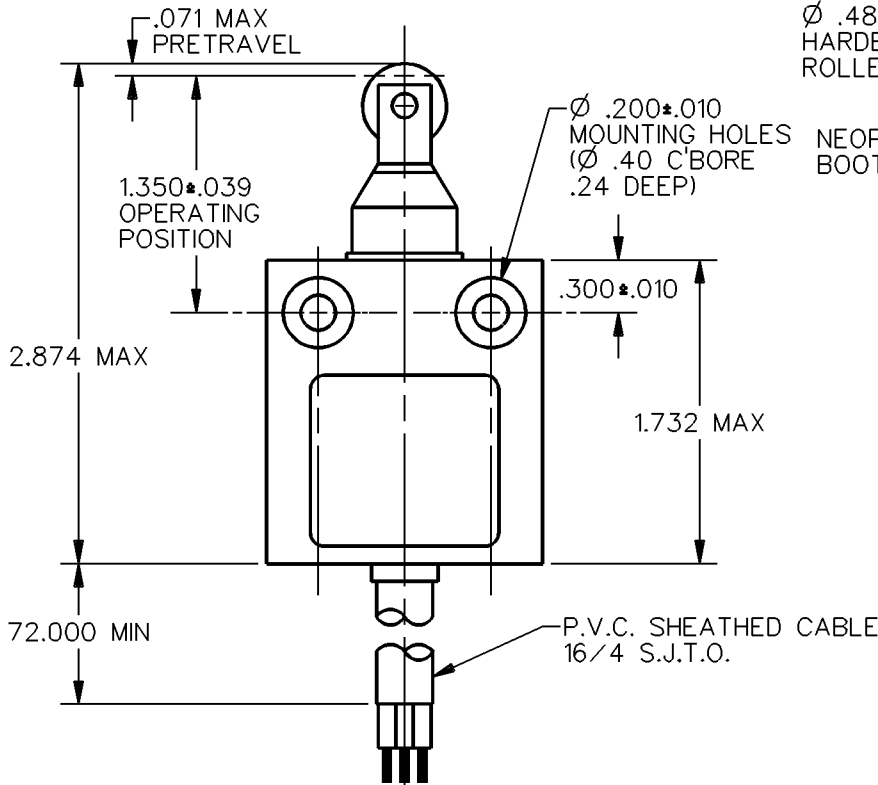
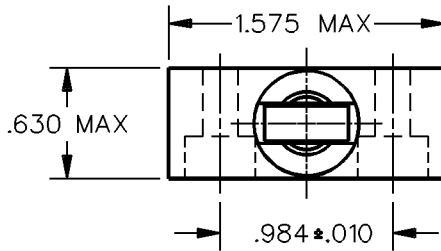
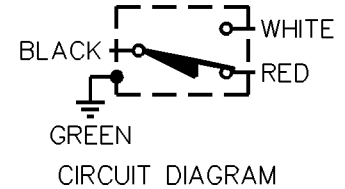
MICRO SWITCH
a Honeywell Division

FED. MFG. CODE 91929

**MINIATURE PRECISION
LIMIT SWITCH**

CATALOG LISTING

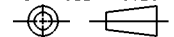
914CE31-6



NOTES
1 - ZINC HOUSING FINISHED WITH GRAY PAINT

THIS DRAWING COVERS A PROPRIETARY ITEM AND IS THE PROPERTY OF MICRO SWITCH, A DIVISION OF HONEYWELL. THIS DRAWING IS NOT TO BE COPIED OR USED WITHOUT THE APPROVAL OF MICRO SWITCH.

THIRD ANGLE PROJECTION



CHARACTERISTICS	ELECTRICAL DATA	SCALE FULL	DO NOT SCALE PRINT
OPERATING FORCE — — — — 5 LB MAX	CONTACT ARRANGEMENT S P D T	UNLESS OTHERWISE SPECIFIED TOLERANCES ARE	
DIFFERENTIAL TRAVEL — — .004 MAX	5A — 125 OR 250 VAC 1/10 HP — 125 OR 250 VAC	ONE PLACE (.0) ±.030	
OVERTRAVEL — — — — .118 MIN		TWO PLACE (.00) ±.015	
		THREE PLACE (.000) ±.005	
		ANGLES ±	
		WEIGHT	

914CE31-6
M
 DRAWING NUMBER
1
 ISSUE
 REVISIONS
 CHECK
 CHECK
 CHECK
 CHECK
 DRAWN
 SAV
 17 AUG 90
 DDM/CAD

REPLACES
 RELEASE NO. PR-18601