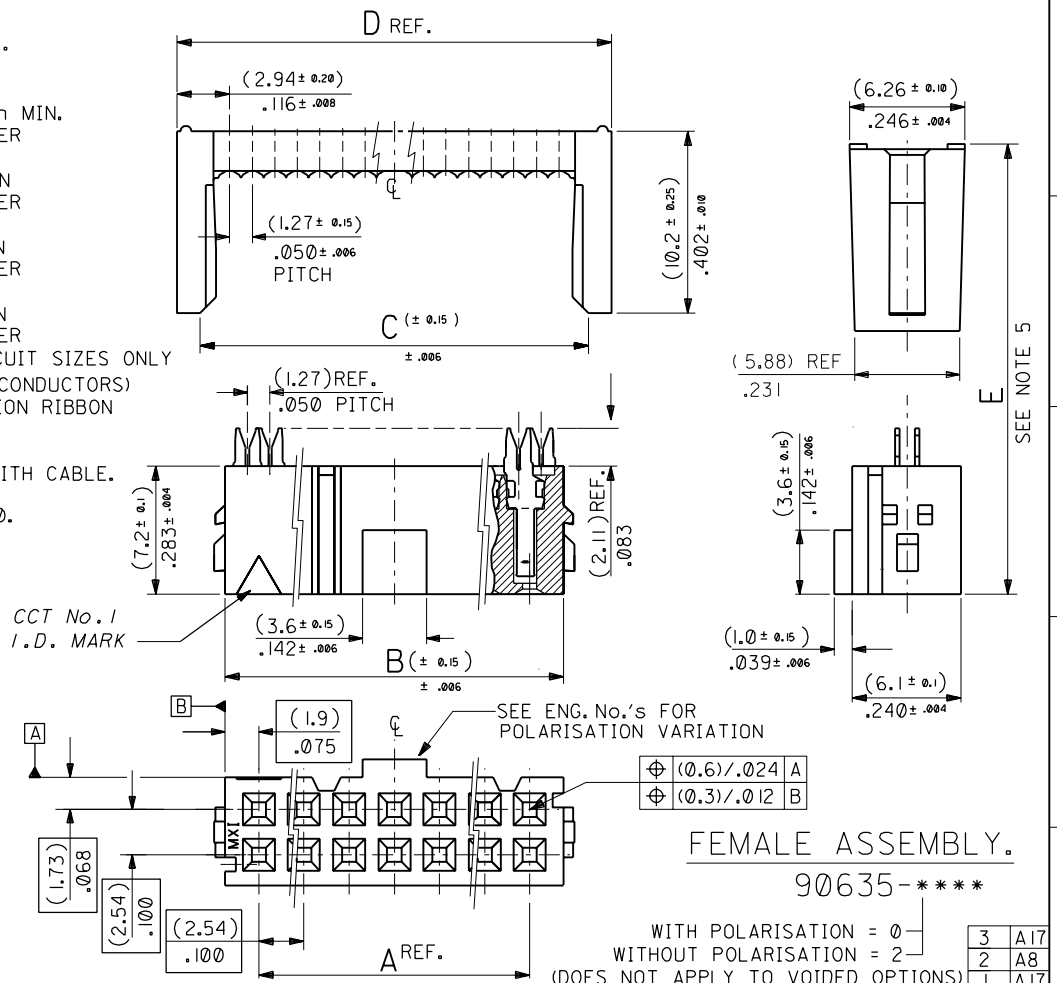


PART NO. SEE CHART  
 DWG. NO. SDA-90635

- NOTES: 1. MATERIAL:  
 HOUSING: POLYESTER, G.F. (UL 94V-0), COLOUR - BLACK.  
 TERMINAL: PHOSPHOR BRONZE.
2. TERMINAL PLATING:  
 90635-\*\*\*1 : CONTACT AREA: GOLD FLASH (0.1um)/ 4uin MIN.  
 I.D. AREA: TIN-LEAD (1um)/ 39uin MIN. OVER NICKEL (1um)/ 39uin MIN.  
 90635-\*\*\*2 : CONTACT AREA: GOLD (0.76um)/ 30uin MIN  
 I.D. AREA: TIN-LEAD (1um)/ 39uin MIN. OVER NICKEL (1um)/ 39uin MIN.  
 90635-\*\*\*3 : CONTACT AREA: GOLD (0.38um)/ 15uin MIN  
 I.D. AREA: TIN-LEAD (1um)/ 39uin MIN. OVER NICKEL (1um)/ 39uin MIN.  
 90635-\*\*\*4 : CONTACT AREA: GOLD (0.51um)/ 20uin MIN  
 I.D. AREA: TIN-LEAD (1um)/ 39uin MIN. OVER NICKEL (1um)/ 39uin MIN.. 20 & 50 CIRCUIT SIZES ONLY
3. FOR USE WITH No. 26 & 28 AWG STRANDED WIRE (7 CONDUCTORS) AND No. 28 SOLID WIRE 1.14/(.045) DIA. MAX. INSULATION RIBBON CABLE WITH 1.27/(.050) CENTERS.
4. MATING STRAIN RELIEF: MOLEX No. 90170.
5. DIMENSION \*E\* IS TOTAL HEIGHT AFTER ASSEMBLED WITH CABLE.  
 E= 10.5/(.413) REF. WITHOUT STRAIN RELIEF.  
 E= (15.2)/.598 MAX. WITH STRAIN RELIEF No. 90170.  
 (14.5)/.571 REF. WHEN COMPRESSED .
6. FOR PRODUCT SPECIFICATION, SEE PS 99020-0015.

NO. OF CKT.	ENG. NO.	A	B	C	D REF.
64	90635-64*	(78.74) 3.100	(82.54) 3.250	(83.31) 3.280	(85.88) 3.381
60	90635-60*	(73.66) 2.900	(77.46) 3.050	(78.23) 3.080	(80.80) 3.181
50	90635-50*	(60.96) 2.400	(64.76) 2.55	(65.53) 2.580	(68.10) 2.681
40	90635-40*	(48.26) 1.900	(52.06) 2.050	(52.83) 2.080	(55.40) 2.181
34	90635-34*	(40.64) 1.600	(44.44) 1.750	(45.21) 1.780	(47.78) 1.881
30	90635-30*	(35.56) 1.400	(39.36) 1.550	(40.13) 1.580	(42.70) 1.681
26	90635-26*	(30.48) 1.200	(34.28) 1.350	(35.05) 1.380	(37.62) 1.481
24	90635-24*	(27.94) 1.100	(31.74) 1.250	(32.51) 1.280	(35.08) 1.381
20	90635-20*	(22.86) .900	(26.66) 1.050	(27.43) 1.080	(30.00) 1.181
16	90635-16*	(17.78) .700	(21.58) .850	(22.35) .880	(24.92) .981
14	90635-14*	(15.24) .600	(19.04) .750	(19.81) .780	(22.38) .881
10	90635-10*	(10.16) .400	(13.96) .550	(14.73) .580	(17.30) .681



FOR PREVIOUS DRAWING ISSUES SEE MRI.

ADDED VOIDED OPTION EGN E80429 30 MARCH 1998 MCLR

REVISIONS

INCH (METRIC)	INCH (METRIC)
3 PLACE ± --	± --
2 PLACE ± . --	± . --
1 PLACE ± --	± --

DRAFT WHERE APPLICABLE MUST REMAIN WITHIN DIMENSIONS

DESIGN DIMENSION (PRIMARY)  (MM)  (IN.)

EQUIVALENT DIMENSION (SECONDARY)  (MM)  (IN.)

DRWG BY: POB

CHK'D BY:

APP'D BY:

SCALE: 4 : 1

REVISE ONLY ON CAD SYSTEM

CAD/CAM FILENAME: SA90635X1 DGN

THIS DRAWING CONTAINS INFORMATION THAT IS PROPRIETARY TO MOLEX INC. & SHOULD NOT BE USED WITHOUT WRITTEN PERMISSION

TITLE: QIK FLECS SINGLE BEAM FEMALE ASSEMBLY

MOLEX MOLEX EUROPE

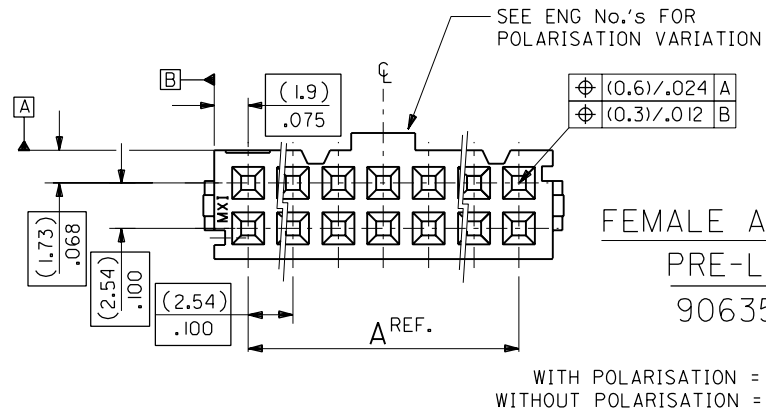
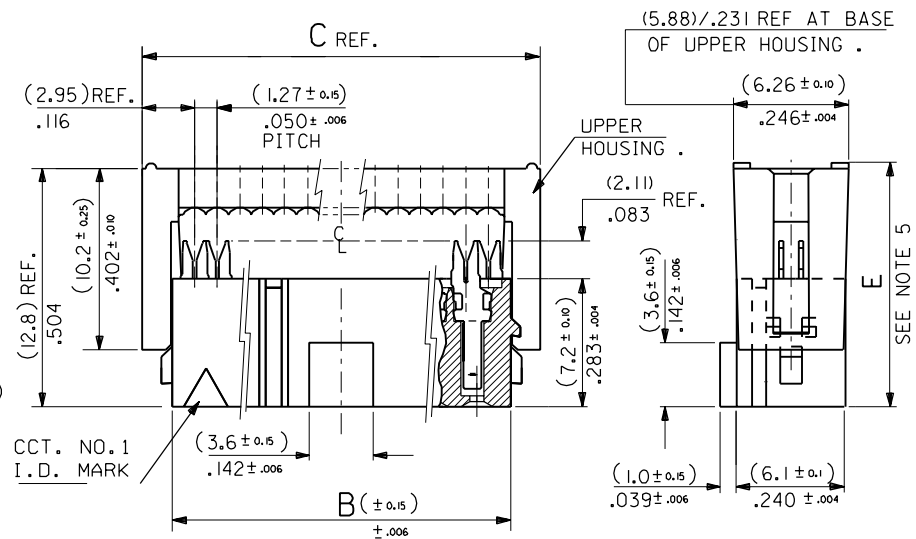
SHEET NO. DATE: 1 OF 3 25/ 9/90

PART NO. SEE CHART

DWG. NO. SDA-90635

SIZE B

- NOTES: 1. MATERIAL:  
HOUSING: POLYESTER, G.F. (UL 94V-0), COLOUR - BLACK.  
TERMINAL: PHOSPHOR BRONZE.
2. TERMINAL PLATING:  
90635-\*\*\*1 : CONTACT AREA: GOLD FLASH (0.1um)/ 4uin MIN.  
I.D. AREA: TIN-LEAD (1um)/ 39uin MIN. OVER  
NICKEL (1um)/ 39uin MIN.  
90635-\*\*\*2 : CONTACT AREA: GOLD (0.76um)/ 30uin MIN  
I.D. AREA: TIN-LEAD (1um)/ 39uin MIN. OVER  
NICKEL (1um)/ 39uin MIN.  
90635-\*\*\*3 : CONTACT AREA: GOLD (0.38um)/ 15uin MIN  
I.D. AREA: TIN-LEAD (1um)/ 39uin MIN. OVER  
NICKEL (1um)/ 39uin MIN.  
90635-\*\*\*4 : CONTACT AREA: GOLD (0.51um)/ 20uin MIN  
I.D. AREA: TIN-LEAD (1um)/ 39uin MIN. OVER  
NICKEL (1um)/ 39uin MIN.  
20 & 50 CIRCUIT SIZES ONLY.
3. FOR USE WITH No. 26 & 28 AWG STRANDED WIRE (7 CONDUCTORS)  
AND No. 28 SOLID WIRE 1.14/(.045) DIA. MAX. INSULATION RIBBON  
CABLE WITH 1.27/(.050) CENTERS.
4. MATING STRAIN RELIEF: MOLEX No. 90170.
5. DIMENSION "E" IS TOTAL HEIGHT AFTER ASSEMBLED WITH CABLE.  
E = 10.5/(.413) REF. WITHOUT STRAIN RELIEF.  
E = (15.2)/.598 MAX. WITH STRAIN RELIEF No. 90170.  
(14.5)/.571 REF. WHEN COMPRESSED.
6. FOR PRODUCT SPECIFICATION, SEE PS 99020-0015.



64	90635-64*	(78.74) 3.100	(82.54) 3.250	(85.88) 3.381
60	90635-60*	(73.66) 2.900	(77.46) 3.050	(80.80) 3.181
50	90635-50*	(60.96) 2.400	(64.76) 2.55	(68.10) 2.681
40	90635-40*	(48.26) 1.900	(52.06) 2.050	(55.40) 2.181
34	90635-34*	(40.64) 1.600	(44.44) 1.750	(47.78) 1.881
30	90635-30*	(35.56) 1.400	(39.36) 1.550	(42.70) 1.681
26	90635-26*	(30.48) 1.200	(34.28) 1.350	(37.62) 1.481
24	90635-24*	(27.94) 1.100	(31.74) 1.250	(35.08) 1.381
20	90635-20*	(22.86) .900	(26.66) 1.050	(30.00) 1.181
16	90635-16*	(17.78) .700	(21.58) .850	(24.92) .981
14	90635-14*	(15.24) .600	(19.04) .750	(22.38) .881
10	90635-10*	(10.16) .400	(13.96) .550	(17.30) .681
NO. OF CKT.	ENG. NO.	A	B	C

FOR PREVIOUS  
DRAWING ISSUES  
SEE MRI.

A8 SEE SHEET 1.

LTR	REVISIONS	DIMENSIONS SHOWN (METRIC) INCH	
		INCH	(METRIC)
		3 PLACE ± . --	± --
		2 PLACE ± . --	± --
		1 PLACE ± . --	± --
DRAFT WHERE APPLICABLE MUST REMAIN WITHIN DIMENSIONS			
		DESIGN DIMENSION (PRIMARY)	<input checked="" type="checkbox"/> (MM) <input type="checkbox"/> IN.
		EQUIVALENT DIMENSION (SECONDARY)	<input type="checkbox"/> (MM) <input checked="" type="checkbox"/> IN.

DRWG BY  
**POB**  
CHK'D BY  
APP'D BY  
SCALE  
**4 : 1**

REVISE ONLY ON CAD SYSTEM		SH.	REV.
CAD/CAM FILENAME SA90635X2	DCN	THIS DRAWING CONTAINS INFORMATION THAT IS PROPRIETARY TO MOLEX INC. & SHOULD NOT BE USED WITHOUT WRITTEN PERMISSION	
TITLE <b>QIK FLECS SINGLE BEAM FEMALE ASSEMBLY, PRE-LOADED</b>			
MOLEX EUROPE		SHEET NO. <b>2 OF</b>	DATE <b>25/ 9/90</b>
PART NO. <b>SEE CHART</b>	DWG NO. <b>SDA-90635</b>	SIZE <b>B</b>	