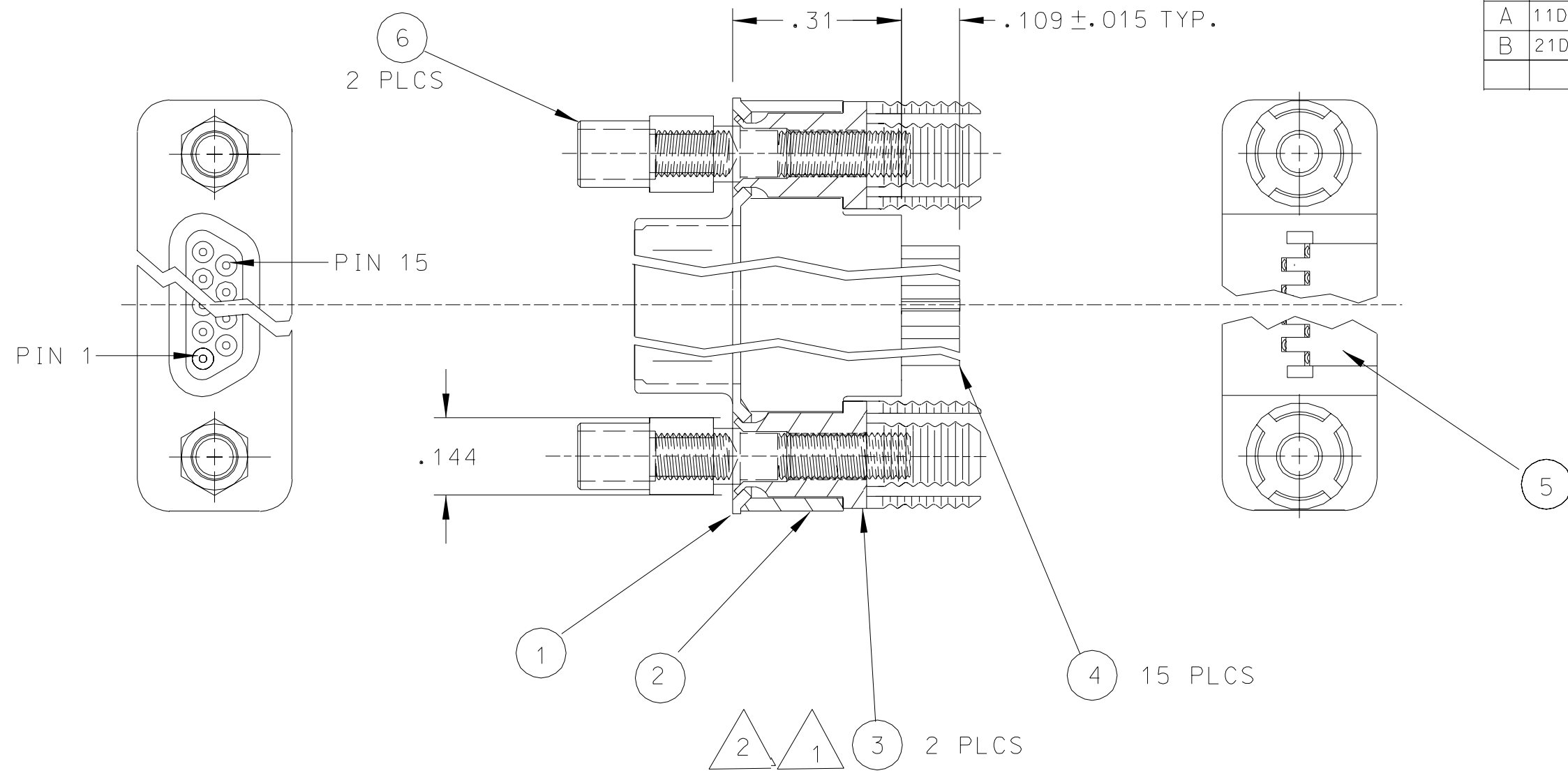

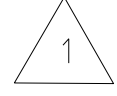


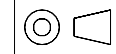


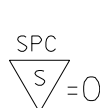
REV	DATE	ECN NO.	APPVD BY	REL BY
A	11DEC00	UM2001-0178		
B	21DEC00	UM2001-0188		



QTY	MATERIAL NO.	DESCRIPTION	ITEM
2	830410005	JACKPOST, 2-56 THREAD	6
1	830100093	CONTACT RETAINER	5
15	830009006	CONTACT, PIN, PCB	4
2	830410078	JACKPOST RETAINER w/BOARD LOCK	3
1	830100091	INSULATOR, STRAIGHT, SIZE 15	2
1	830150020	PLUG SHELL, SIZE 15 STAMPED	1

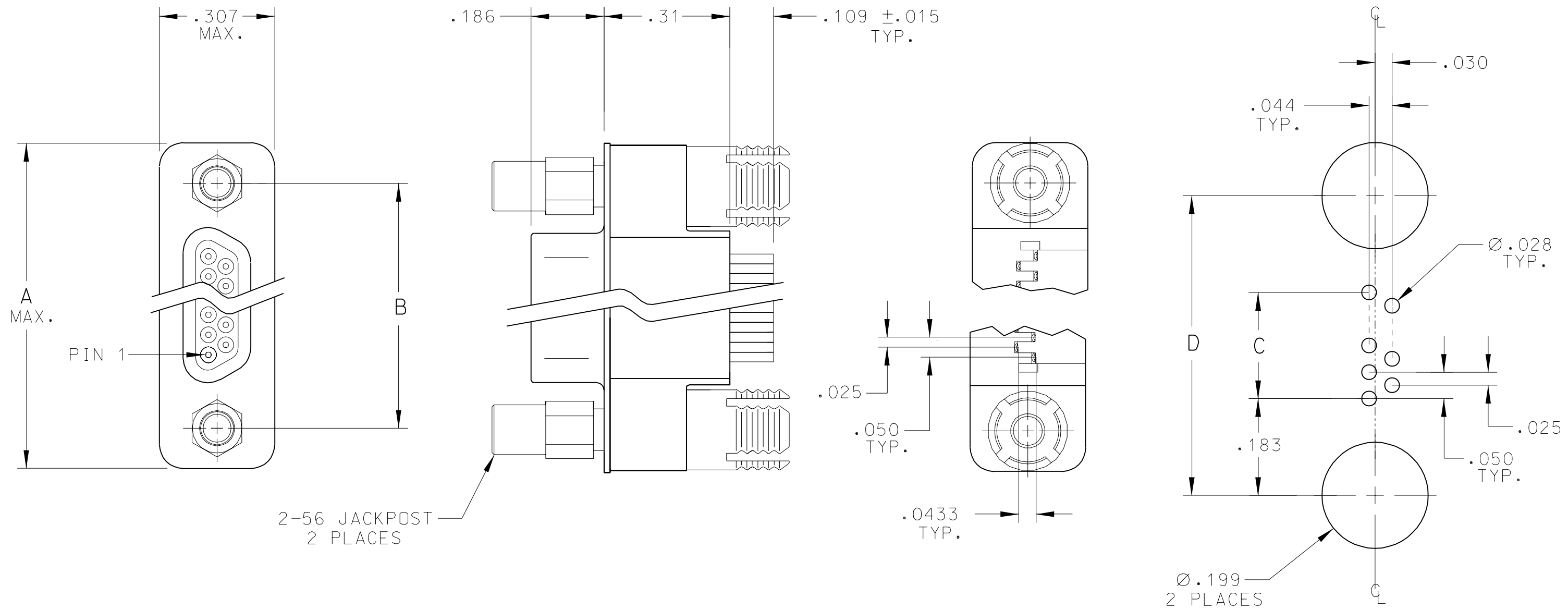
 AFTER SWAGING, ITEM 3 TO WITHSTAND 40 IN-OZ OF TORQUE WITH NO INDICATION OF MOVEMENT
 SWAGE ITEM 3 INTO ITEM 1 TO WITHSTAND 5 LB AXIAL PULL OFF FORCE ON ITEM 3.

NOTES: UNLESS OTHERWISE SPECIFIED.

QUALITY SYMBOLS	UNLESS SPECIFIED: ALL DIMENSIONS IN INCHES GENERAL TOLERANCES: 3 PLACES ± .005 2 PLACES ± .010 ANGULAR ± 2°	SCALE NONE	DWG SIZE B	 THIRD ANGLE PROJECTION	REVISE ON CAD ONLY
MAJOR  = 0	Utli-Mate CAGE CODE 58967	DRAWN BY & DATE AW 12/11/00		TITLE: CONNECTOR, COMMERCIAL-D, PLUG, VERTICAL, JACKPOST, SIZE 15	
CRITICAL  = 0		CHECKED BY & DATE AW 12/11/00		APPROVED BY & DATE	
SPC  = 0		PART NO. 836129024		DRAWING NO. E-83612-9024	SHEET NO. 1 OF 1
THIS DRAWING CONTAINS INFORMATION THAT IS PROPRIETARY TO MOLEX INCORPORATED AND SHOULD NOT BE USED WITHOUT WRITTEN PERMISSION.					

REV B

REV	DATE	ECN NO.	APPVD BY	REL BY
A	23OCT00	UM2001-0123		
B	21DEC00	UM2001-0188		



RECOMMENDED
P.C.B. LAY-OUT
 .060 PANEL THICKNESS

PART NUMBER	SIZE	A MAX.	B NOM.	C REF.	D NOM.
836129024	15	.935	.715	.350	.715
836149016	25	1.185	.965	.600	.965

QUALITY SYMBOLS MAJOR = 0 CRITICAL = 0 SPC = 0	UNLESS SPECIFIED: ALL DIMENSIONS IN INCHES GENERAL TOLERANCES: 3 PLACES ± .005 2 PLACES ± .010 ANGULAR ± 2°	SCALE NONE DWG SIZE B	THIRD ANGLE PROJECTION	REVISE ON CAD ONLY
	DRAWN BY & DATE D.URBACH 23OCT00	CHECKED BY & DATE	TITLE: CONNECTOR, COMMERCIAL-D, PLUG, VERTICAL, JACKPOST, SIZE 15 & 25	MOLEX INCORPORATED Orange, CA 92868
	APPROVED BY & DATE	PART NO. SEE "TAB BLOCK"	DRAWING NO. SD-83612-9024	SHEET NO. 1 OF 1
	Ulti-Mate CAGE CODE 58967	THIS DRAWING CONTAINS INFORMATION THAT IS PROPRIETARY TO MOLEX INCORPORATED AND SHOULD NOT BE USED WITHOUT WRITTEN PERMISSION.		

2. MARKING: NONE.
 1. REFER TO PS-83421-9000 FOR PRODUCT SPECIFICATION.
 NOTES: UNLESS OTHERWISE SPECIFIED.