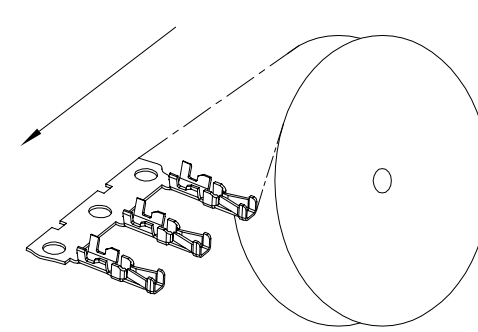
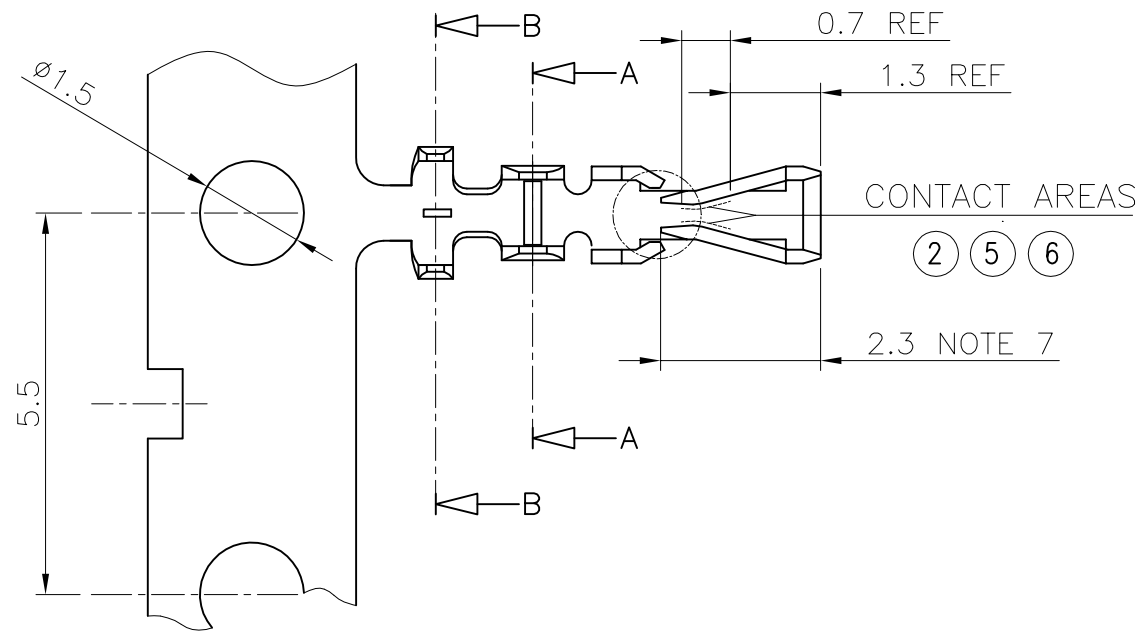
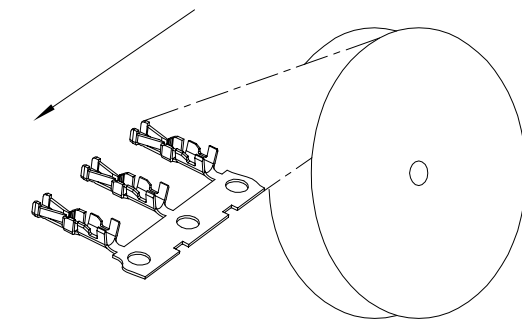


PRODUCT NO.	FINISH	REELING DIRECTION
77138-001LF	NOTE 2	FIG.1
77138-101LF	NOTE 6	FIG.1
77138-201LF	NOTE 5	FIG.1
77138-001RELF	NOTE 2	FIG.2
77138-101RELF	NOTE 6	FIG.2



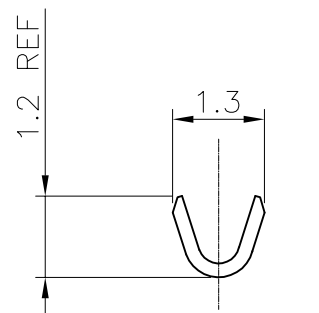
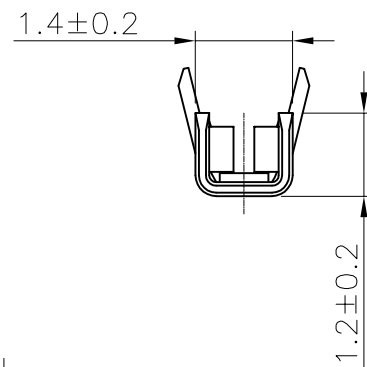
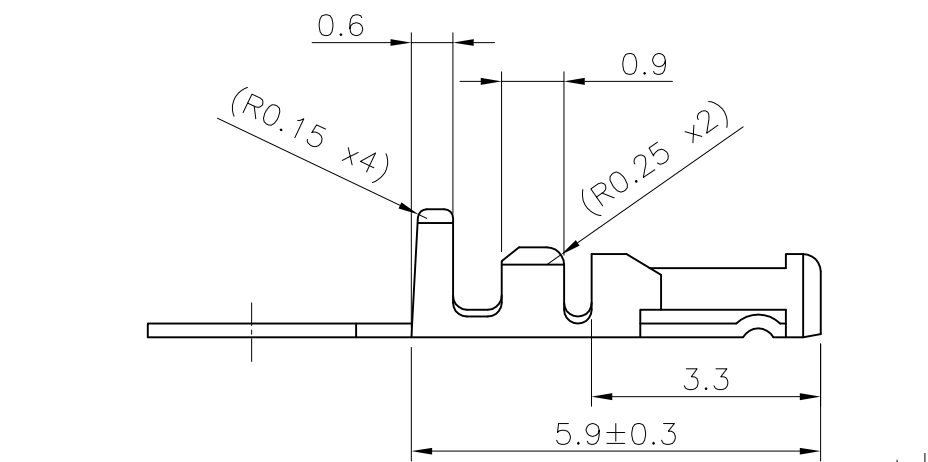
UNREELING DIRECTION
FIG.1



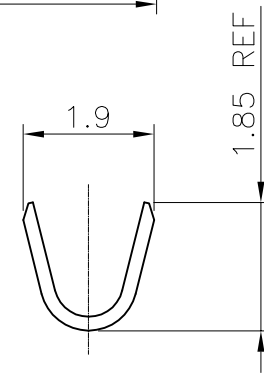
UNREELING DIRECTION
FIG.2

NOTES

- 1 MATERIAL : PHOSPHOR BRONZE
- ② FINISH : SELECTIVE GOLD PLATING 0.2 μ m MIN (CONTACT AREA) OVER 1.27 μ m Ni MIN
- 3 WIRE RANGE : AWG 26-30
INSULATOR DIAMETER : \varnothing 1.4 MAX
- 4 GENERAL TOLERANCE : \pm 0.25
- ⑤ FINISH : SELECTIVE GOLD PLATING 0.5 μ m MIN (CONTACT AREA) OVER 1.27 μ m Ni MIN
- ⑥ FINISH : SELECTIVE GOLD PLATING 0.76 μ m MIN (CONTACT AREA) OVER 1.27 μ m Ni MIN
- 7 REMAINDER : GOLD FLASH
a- UNDERPLATING 1.27 μ m NI MIN ALL OVER
- 8 THIS PRODUCT MEETS EUROPEAN UNION DIRECTIVES AND OTHER COUNTRY REGULATIONS AS DESCRIBED IN GS-22-008
- 9 CRIMP SPECIFICATION AS PER 100-006



SECTION A-A



SECTION B-B

mat'l. code		surface		tolerance		projection		product family	
SEE NOTES		ISO 1302		ISO 406 ISO 1101				MINITEK	
ltr	ecn no	dr	date	tolerances unless otherwise specified		mm		title	
J	J07-0092	R.S	07.02.07	.x \pm 0.25				CTW MINITEK	
K	F08-0122	JCO	08.05.05	.xx \pm 0.15				AWG 26-30	
L	F08-0174	JCO	08.05.20	.xxx \pm 0.05		scale 5:1		dwg no	
				dr		L.MULIN		08.01.28	
				enr		J.COMPAGNON		08.01.28	
				chr					
				appd		J.CO		08.05.05	
sheet index		revision sheet						type	
								CUSTOMER Drawing	