

MATERIALS AND FINISHES

BODY, NUT, LOCKWASHER SEE TABLE

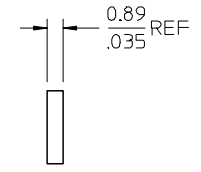
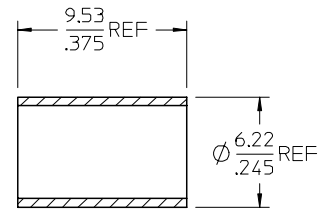
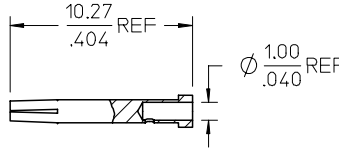
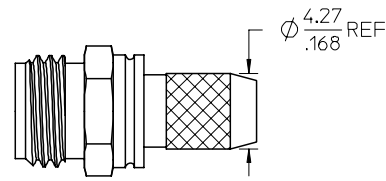
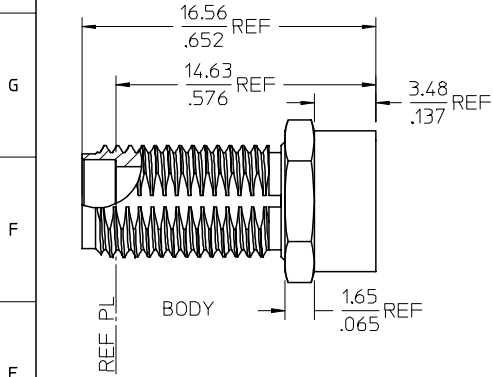
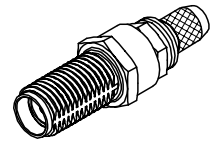
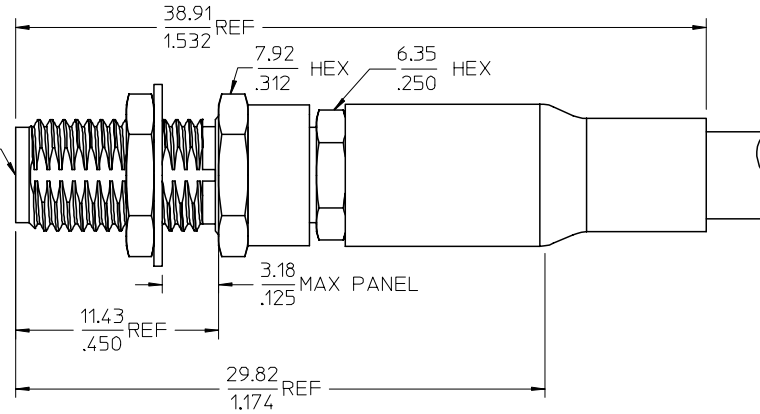
CENTER CONTACT BERYLLIUM COPPER  
PLATED GOLD

CRIMP TUBE BRASS  
PLATED NICKEL

INSULATOR TEFLON

SHRINK TUBE VERSAFIT OR EQUIVALENT

SMA JACK  
INTERFACE

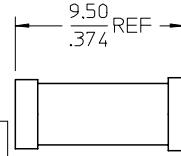


REAR BODY

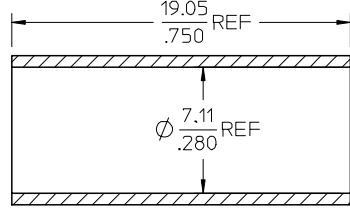
CONTACT

CRIMP TUBE

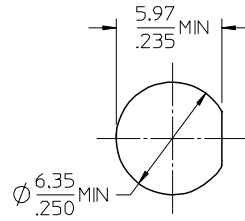
INSULATOR



INSULATOR



SHRINK TUBE



RECOMMENDED  
MOUNTING HOLE

73251-0102	73251-0100 BY TRAY (20 CAV.)
PART NO.	PACKAGING

ES-89675-1550	CABLE ASSY INSTR
PS-89675-1160	ELECTRO/MECH PERFORM
MIL-STD-348A, FIG. 310.2	INTERFACE
SPECIFICATION	DESCRIPTION

73251-0101	BRASS	NICKEL	PH BRONZE	NICKEL
73251-0100	ST STEEL	PASSIVATED	ST STEEL	PASSIVATED
PART NO.	MATERIAL	PLATING	MATERIAL	PLATING
BODY/NUT			LOCK WASHER	

ADDED P/N 73251-0102  
 EC NO. URF 2007-0406  
 DRAWN IN LIN 2007/05/24  
 CHKD: 2007/05/24  
 APPR: MHIUANG 2007/05/25  
 REVISION DESCRIPTION  
 A4

QUALITY SYMBOLS	GENERAL TOLERANCES (UNLESS SPECIFIED)	DIMENSION STYLE	SCALE	DESIGN UNITS	THIRD ANGLE PROJECTION
$\nabla=0$ $\nabla=0$	mm INCH 4 PLACES ± --- ± --- 3 PLACES ± --- ± --- 2 PLACES ± --- ± --- 1 PLACE ± --- ± --- ANGULAR ± 2 °	MM/IN	DATE	METRIC	TITLE SMA JACK, STR 50 OHMS SMA-JC
		DRAWN BY	DATE		MOLEX INCORPORATED DOCUMENT NO. SD-73251-010 SHEET NO. 1 OF 1
		CHECKED BY	DATE		
		APPROVED BY	DATE		
	DRAFT WHERE APPLICABLE MUST REMAIN WITHIN DIMENSIONS	MATERIAL NO.	DATE		
		SIZE			