

SPECIFICATION

- VOLTAGE 500VAC
- FREQUENCY 50/60Hz
- CURRENT 100A @ 50 deg C
- OVERLOAD CURRENT 150% 1MIN. 200% 1SEC
- TEMPERATURE -25 TO 85 deg C
- LEAKAGE CURRENT:-
- AS PER IEC950 = 73mA @ 500V 50Hz
- HUMIDITY 90% RH
- VIBRATION 10-200Hz 1.8G
- SURGE 4kV 1.2/50uS
- ELECTRIC STRENGTH 2500VAC/1min.
- POWER LOSS (FULL LOAD) = 75W
- WEIGHT 9.5kg
- BACK MOUNTING 4x M6 (DUAL KEYWAY)
- SIDE MOUNTING 4x M8

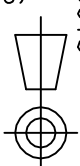
ATTENUATION

- COMMON MODE - 60dB AT 150kHz
- DIFFERENTIAL MODE - 40dB AT 150kHz
- DESIGNED TO MEET EN55022B (DOMESTIC)
- WHEN SCREENED MOTOR CABLE USED

CONSTRUCTION

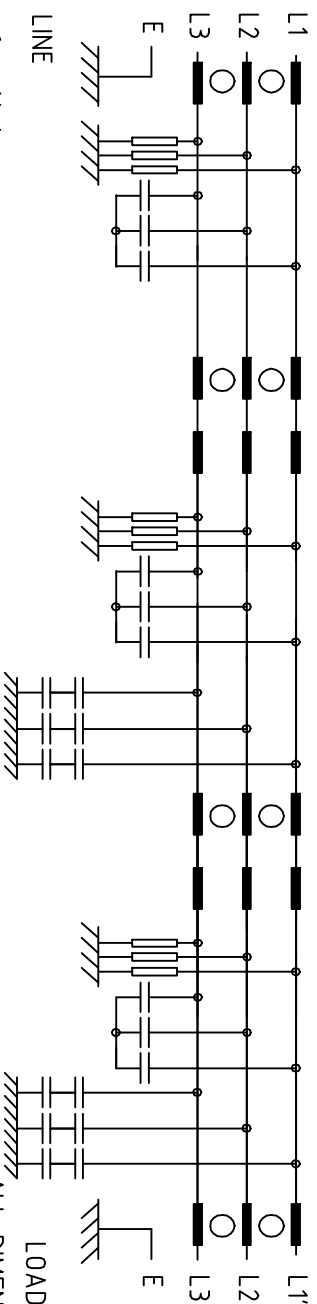
- PERFORATED ALUMINIUM BODY FOR AIR COOLING.
- ALUMINIUM BASE WITH CAPACITOR NETWORKS
- PCB MOUNTED, CHOKES AIR COOLED FIXED TO
- BASE PLATE, INSULATING TERMINAL BOOTS
- SUPPLIED WITH FILTER.

ALL DIMENSIONS IN MM / ANGLES IN DECIMAL DEGREES



FILTER MEASURED AT 1KHZ

TOTAL L = 294uH, X CAP = 3.64uF, Y CAP = 1.7uF, RES = 666k Ohm



DrgNo MIF3100-GS

TITLE THREE PHASE 500V 100A MAINS FILTER

ROXBURGH EMC



ISS

3

GENERAL SPECIFICATION
FOR MIF3100

CUSTOMER
FILTER REF

Sheet ? of 1 Aprvd Date 24/10/00 Aprvd By SW Drwn by BFS SCALE NTS CNN--- Location N:\DWG\GS\GS

©DELTRON EMCON LTD, ROXBURGH HOUSE, FOXHILLS INDUSTRIAL PARK, SCUNTHORPE, NORTH LINCOLNSHIRE, DN15 8QJ TEL +44 1724 281770 F +44 1724 270230