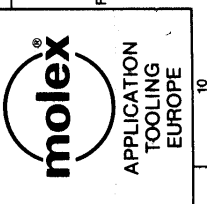


ECN E05778  
 DES TITLE WAS ASSY MOOLE  
 ITEM 1 WAS ITEMS (C)  
 19/ GUIDE RAIL FOR GAWAY -  
 20/ ITEM 4 DELETED (A7)  
 D DESCRIPTION WAS  
 (QFSO M X50 5321  
 40312) F8

16-10-89 AS  
 (90802 &  
 90802M)  
 REDRAWN &  
 COMBINED  
 C ECN E95215

REVISION



TITLE:  
**ARBOR PRESS FIXTURE**  
 (5320 / 908035)

DRAWING No. **69020-0680** SHT 1 OF 1 A3

DRAWN: **ASMITH**  
 DATE: **OCT 89**  
 CHECKED:  
 APPROVED:

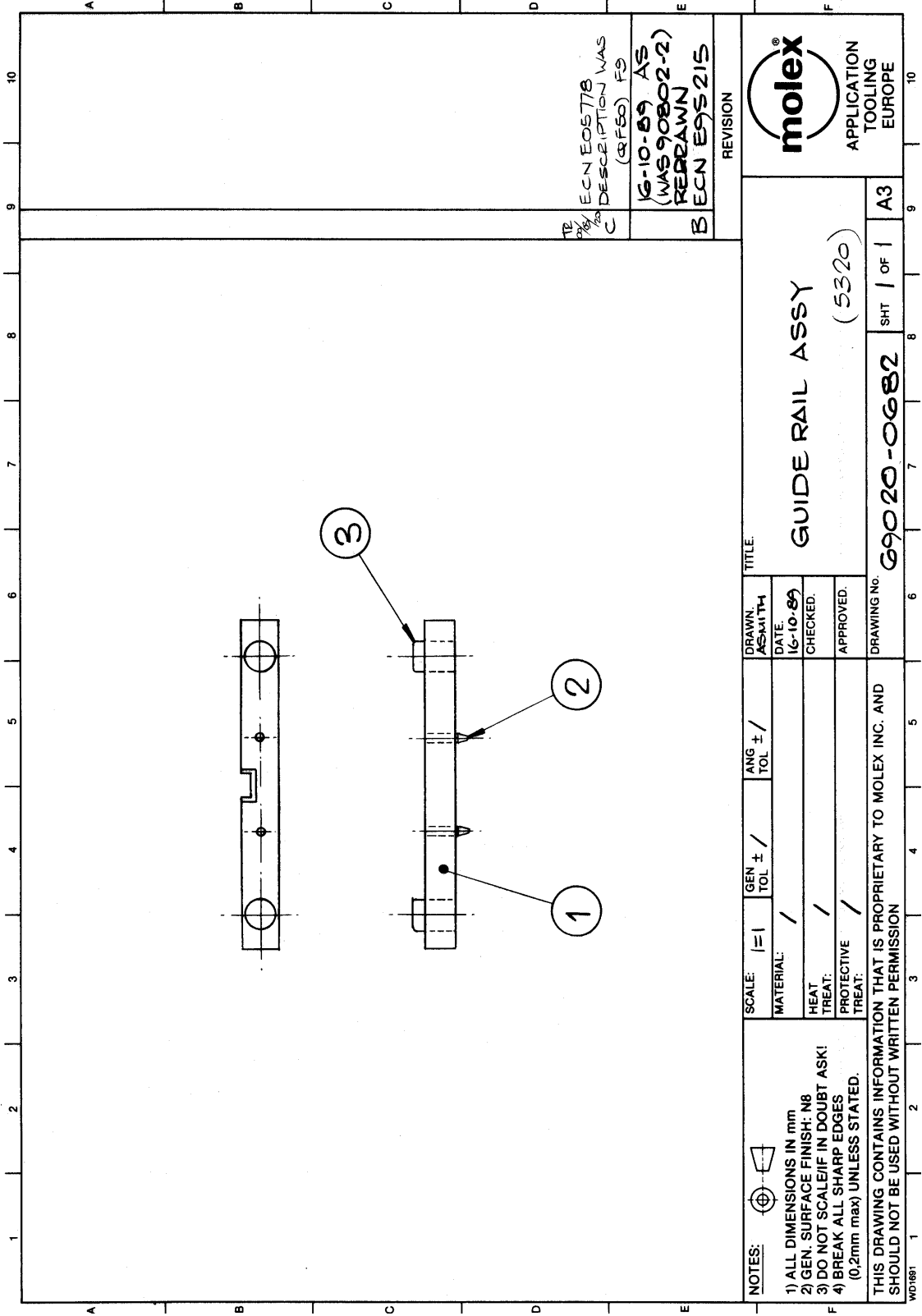
SCALE:  $\frac{1}{1}$  GEN  $\pm$  / TOL ANG  $\pm$  / TOL

MATERIAL:  
 HEAT TREAT:  
 PROTECTIVE TREAT:

NOTES:  
 1) ALL DIMENSIONS IN mm  
 2) GEN. SURFACE FINISH: N8  
 3) DO NOT SCALE/IF IN DOUBT ASK!  
 4) BREAK ALL SHARP EDGES  
 (0.2mm max), UNLESS STATED.

THIS DRAWING CONTAINS INFORMATION THAT IS PROPRIETARY TO MOLEX INC. AND SHOULD NOT BE USED WITHOUT WRITTEN PERMISSION





ECN E05778  
 DESCRIPTION WAS  
 (GRF50) FS

16-10-89 AS  
 (WAS 90802-2)  
 REBRAWN  
 ECN E9S 215

REVISION



TITLE:  
**GUIDE RAIL ASSY**  
 (5320)

DRAWN: ASMITH  
 DATE: 16-10-89  
 CHECKED:  
 APPROVED:

SCALE: 1:1  
 GEN TOL ± /  
 ANG TOL ± /  
 MATERIAL: /  
 HEAT TREAT: /  
 PROTECTIVE TREAT: /

NOTES:  
 1) ALL DIMENSIONS IN mm  
 2) GEN. SURFACE FINISH: N8  
 3) DO NOT SCALE/IF IN DOUBT ASK!  
 4) BREAK ALL SHARP EDGES (0.2mm max) UNLESS STATED.

THIS DRAWING CONTAINS INFORMATION THAT IS PROPRIETARY TO MOLEX INC. AND SHOULD NOT BE USED WITHOUT WRITTEN PERMISSION

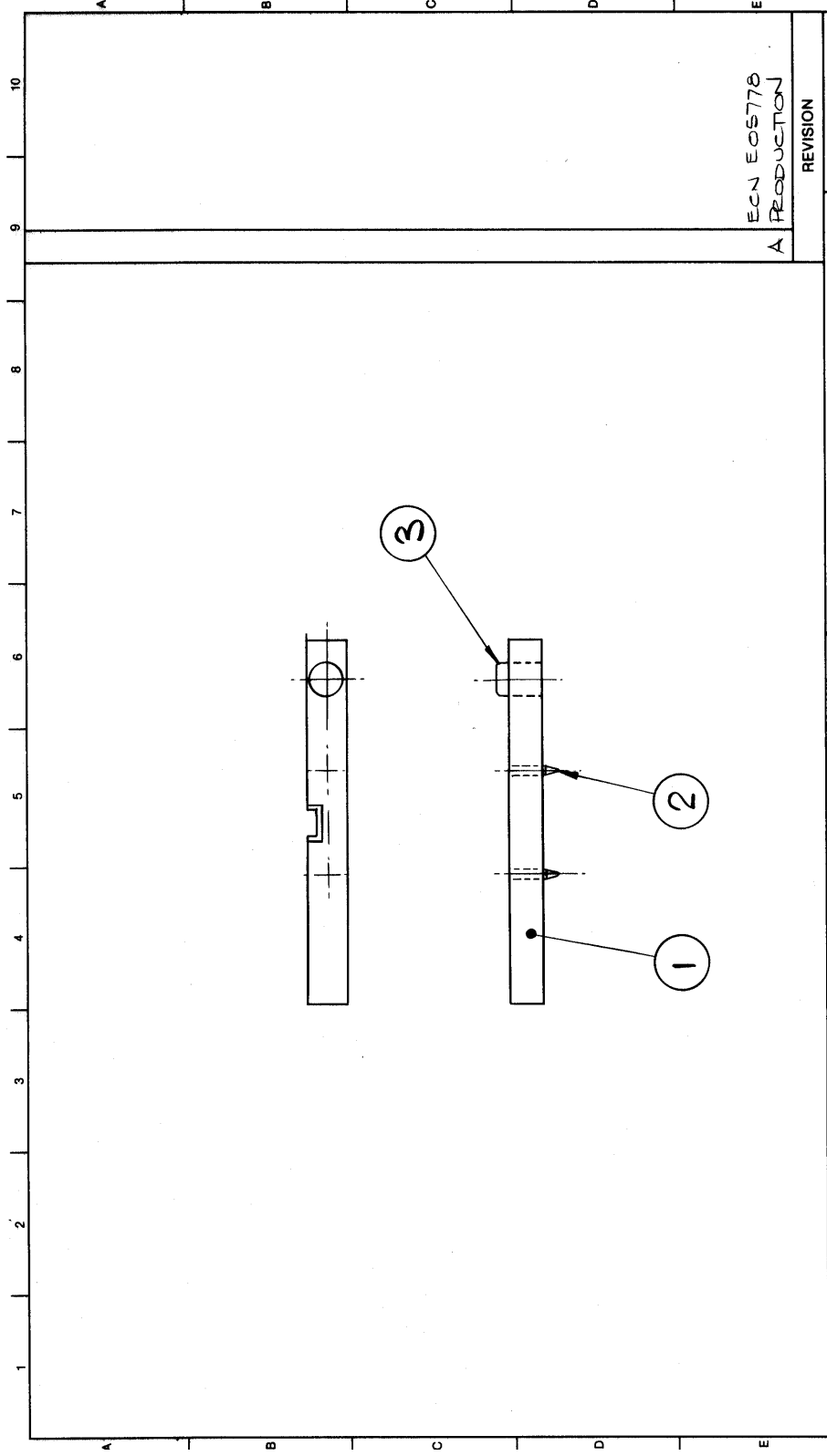
WD1883

DRAWING No. **G9020-0682**

SHT 1 OF 1

A3





ECN E05778  
A PRODUCTION

REVISION



GUIDE RAIL ASSY

(900035)

SHT 1 OF 1 A3

TITLE

DRAWN. T.E.

DATE: 8/20/20

CHECKED.

APPROVED.

ANG ± / TOL

GEN ± / TOL

SCALE: 1:1

MATERIAL: /

HEAT TREAT: /

PROTECTIVE TREAT: /

NOTES:

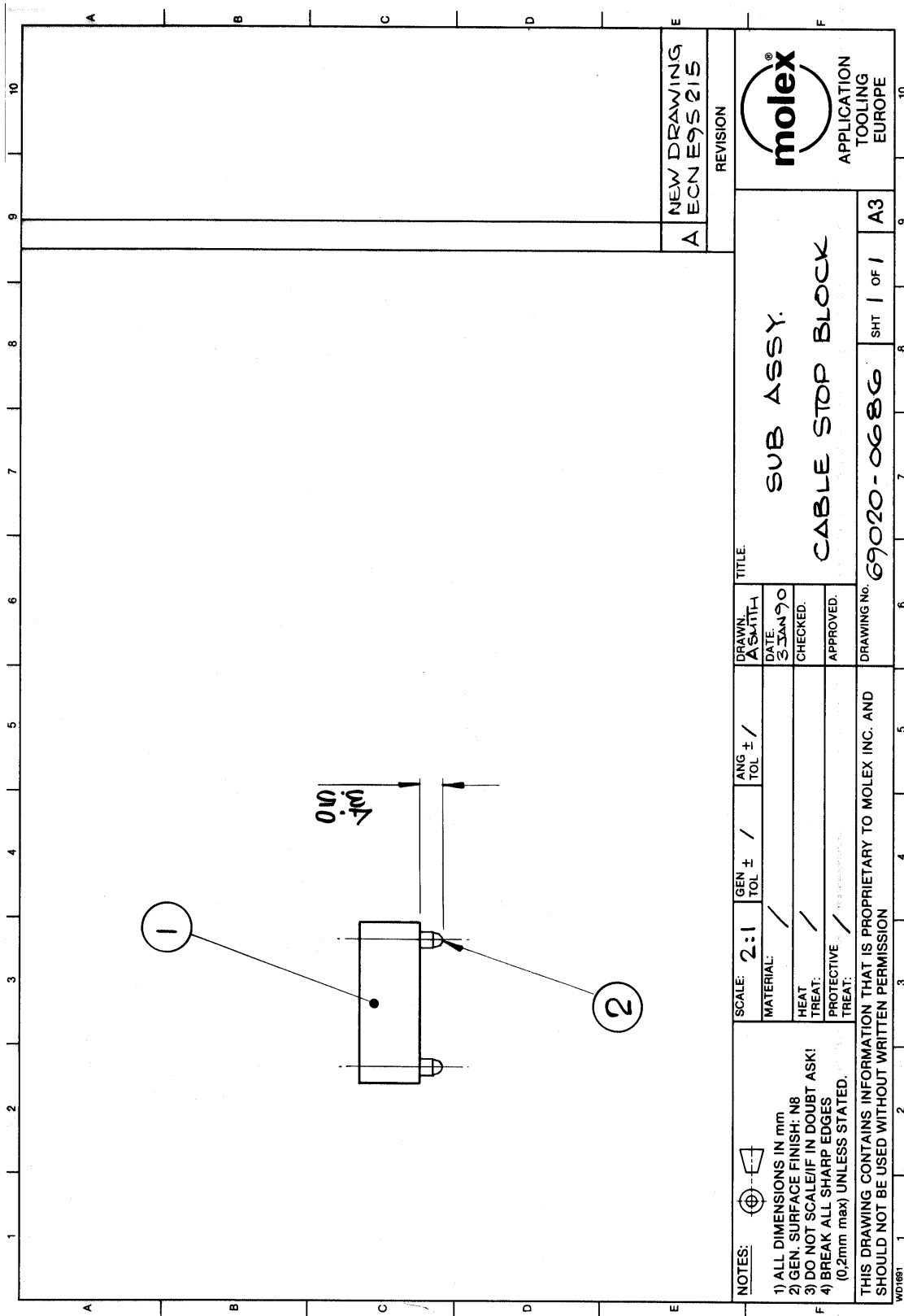
- 1) ALL DIMENSIONS IN mm
- 2) GEN. SURFACE FINISH: N8
- 3) DO NOT SCALE/IF IN DOUBT ASK!
- 4) BREAK ALL SHARP EDGES (0.2mm max) UNLESS STATED.

THIS DRAWING CONTAINS INFORMATION THAT IS PROPRIETARY TO MOLEX INC. AND SHOULD NOT BE USED WITHOUT WRITTEN PERMISSION

WD1681

DRAWING No. 69020-0684





**NOTES:**

- 1) ALL DIMENSIONS IN mm
- 2) GEN. SURFACE FINISH: N8
- 3) DO NOT SCALE/IF IN DOUBT ASK!
- 4) BREAK ALL SHARP EDGES (0,2mm max) UNLESS STATED.

THIS DRAWING CONTAINS INFORMATION THAT IS PROPRIETARY TO MOLEX INC. AND SHOULD NOT BE USED WITHOUT WRITTEN PERMISSION

SCALE: 2:1    GEN TOL ± /    ANG TOL ± /

MATERIAL: /

HEAT TREAT: /

PROTECTIVE TREAT: /

DRAWN: A SMITH  
DATE: 5 JAN 90  
CHECKED:  
APPROVED:

TITLE:  
**SUB ASSY.  
CABLE STOP BLOCK**

DRAWING No. **69020-0686**    SHT 1 OF 1    A3

NEW DRAWING  
A ECN E95215

REVISION

**molex**  
APPLICATION TOOLING EUROPE

