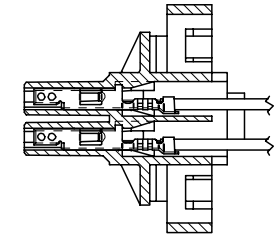
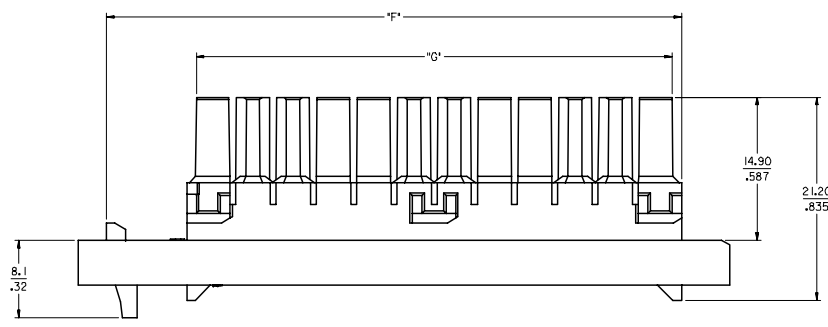
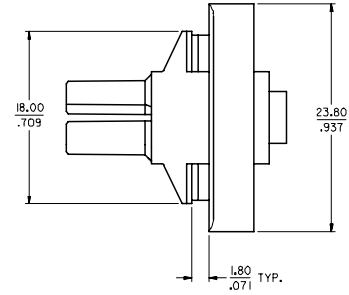
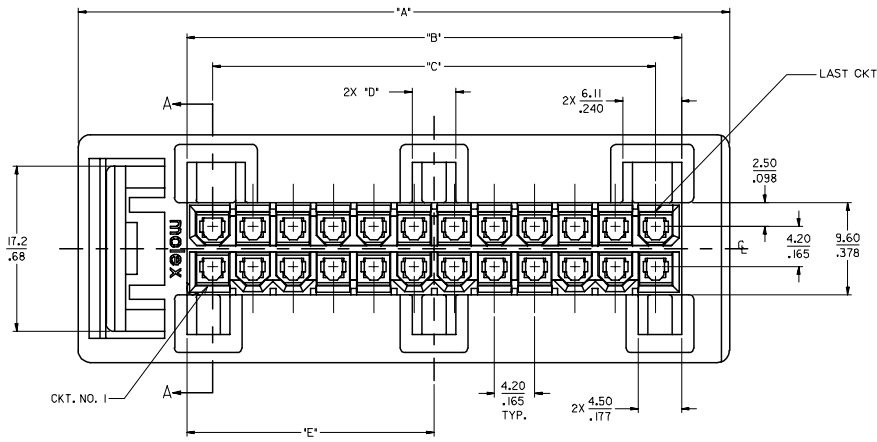


CKT. SIZE	MATERIAL NUMBER	TOOLING
18	44516-0009	TOOLED
20	44516-0010	NOT TOOLED
22	44516-0011	NOT TOOLED
24	44516-0012	TOOLED

CKT. SIZE	DIM. "A"	DIM. "B"	DIM. "C"	DIM. "D"	DIM. "E"	DIM. "F"	DIM. "G"	DIM. "K"	DIM. "L"	DIM. "M"	DIM. "N"
18	55.30 (2.177)	39.00 (1.535)	33.60 (1.323)	3.59 (.141)	19.50 (.768)	47.40 (1.867)	37.00 (1.458)	49.94 (1.966)	40.77 (1.605)	18.72 (.737)	4.35 (.171)
20	59.50 (2.343)	43.20 (1.701)	37.80 (1.488)	4.50 (.177)	21.60 (.850)	51.60 (2.032)	41.20 (1.623)	54.14 (2.131)	44.97 (1.770)	20.37 (.802)	5.26 (.207)
22	63.70 (2.508)	47.40 (1.866)	42.00 (1.653)	3.59 (.141)	23.70 (.933)	55.80 (2.197)	45.40 (1.788)	58.34 (2.297)	49.18 (1.936)	22.92 (.902)	4.35 (.171)
24	67.90 (2.673)	51.60 (2.031)	46.20 (1.819)	4.50 (.177)	25.80 (1.016)	60.00 (2.362)	50.00 (1.953)	62.54 (2.462)	53.38 (2.102)	24.57 (.967)	5.26 (.207)



SECTION "A-A"
TERMINAL ORIENTATION

- NOTES:**
- MATERIAL: PBT, UNFILLED BLACK, V-0.
 - PART IS DESIGNED IN METRIC.
 - PART TO BE USED WITH MOLEX FEMALE TERMINAL *5556 OR 44476.
 - THIS CONNECTOR ALLOWS FOR 1.27(.050) MAX. MISALIGNMENT IN ANY DIRECTION.
 ⚠️ A MAXIMUM TOLERANCE OF 1.27(.050) ALLOWS FOR 2 POINTS OF ELECTRICAL CONTACT.
 A MAXIMUM TOLERANCE OF .51(.020) ALLOWS FOR 4 POINTS OF CONTACT.
 - PART MATES WITH MINI-FIT B.M.I. PLUG #43759.
 - THIS PART CONFORMS TO MOLEX PRODUCT SPEC. NO. PS-44516-001.
 - CONNECTOR ASSEMBLIES ARE NOT TO BE MATED OR UNMATED WHILE CIRCUITS ARE LIVE.
 - ⚠️ PANEL SHOULD BE PUNCHED IN THE DIRECTION OPPOSITE OF CONNECTOR INSERTION.
 - THIS PART IS NOT INTENDED TO PROVIDE ANY ALIGNMENT OF CUSTOMER COMPONENTS OR MODULES, SUCH AS POWER SUPPLIES AND CHASSIS.
 - PANEL CUT-OUT DIMENSIONS HAVE A TOLERANCE OF +.076(/.003).
 - IT IS THE RESPONSIBILITY OF THE CUSTOMER TO ENSURE THAT THE PANEL TO WHICH THE RECEPTACLE IS TO BE MOUNTED, IS SUFFICIENTLY SUPPORTED SO THAT FLEXING OF THE PANEL DURING MATING DOES NOT PREVENT THE CONNECTOR SYSTEM FROM BEING FULLY MATED.
 - IT IS RECOMMENDED THAT THE CABLES EXITING THE RECEPTACLE BE DRESSED IN A MANNER THAT WILL ALLOW THE RECEPTACLE TO FLOAT FREELY WHEN MOUNTED IN IT'S RESPECTIVE PANEL.
 - THIS PART IS NOT INTENDED TO ACT AS A HARD STOP FOR CUSTOMER COMPONENTS.
 - WIRES TO BE DRESSED IN SUCH A MANNER TO ALLOW THE TERMINALS TO FLOAT FREELY IN THE POCKET

REVISED PICTORALLY IEC NO: UCP2005-2633 DRAWN BY: DRW:NDUNNE 2005/06/02 CHECKED BY: CHK:KCPULGAR 2005/06/02 APPR: MMARGILL 2005/06/03 DESCRIPTION:	QUALITY SYMBOLS ▽=0 ▽=0	GENERAL TOLERANCES (UNLESS SPECIFIED) <table border="1"> <tr> <th></th> <th>mm</th> <th>INCH</th> </tr> <tr> <td>4 PLACES</td> <td>± .10</td> <td>± .004</td> </tr> <tr> <td>3 PLACES</td> <td>± .15</td> <td>± .006</td> </tr> <tr> <td>2 PLACES</td> <td>± 0.25</td> <td>± .010</td> </tr> <tr> <td>1 PLACE</td> <td>± 0.35</td> <td>± .014</td> </tr> </table> ANGULAR ±1/2°		mm	INCH	4 PLACES	± .10	± .004	3 PLACES	± .15	± .006	2 PLACES	± 0.25	± .010	1 PLACE	± 0.35	± .014	DIMENSION STYLE MM/IN	SCALE 4:1	DESIGN UNITS METRIC	THIRD ANGLE PROJECTION
		mm	INCH																		
	4 PLACES	± .10	± .004																		
	3 PLACES	± .15	± .006																		
2 PLACES	± 0.25	± .010																			
1 PLACE	± 0.35	± .014																			
MATERIAL NO. SD-44516-005	DOCUMENT NO. SD-44516-005	DRAWN BY HRIBAR	DATE 01/07/17	CHECKED BY BANDURA	DATE 01/07/17	TITLE PANEL-MOUNT RECEPTACLE 18-24 CIRCUIT BLIND MATE MINI-FIT SLIDE 'N' LOCK															
DRAFT WHERE APPLICABLE MUST REMAIN WITHIN DIMENSIONS	SEE CHART	APPROVED BY EDGLEY	DATE 01/07/17	MOLEX INCORPORATED	SHEET NO. 1 OF 2	THIS DRAWING CONTAINS INFORMATION THAT IS PROPRIETARY TO MOLEX INCORPORATED AND SHOULD NOT BE USED WITHOUT WRITTEN PERMISSION															
MOLEX INCORPORATED																					

